



EVO Manufacturing
Jeep Wrangler JL/JT Gladiator
JL/JT Trackbars
EVO- 3047B, 3048B, 3049B





Before starting installation procedure please read <http://evomfg.com>Returns-Warranties-Shipping>

CAREFULLY READ AND FOLLOW ALL INSTRUCTIONS IN THIS MANUAL AND KEEP FOR FUTURE REFERENCE. IF YOU HAVE ANY QUESTIONS ABOUT THE PRODUCT CALL EVO MANUFACTURING. FAILURE TO FOLLOW GUIDELINES COULD RESULT IN MALFUNCTION OF PARTS OR INJURY. PLEASE HAVE A TRAINED PROFESSIONAL ASSIST WITH OR INSTALL ALL PRODUCTS. INSTALLING EVO MFG PRODUCTS OR KITS DEMANDS SPECIFIC KNOWLEDGE, TOOLS AND EXPERIENCE. GENERAL KNOWLEDGE OF HOW TO USE LATER SPECIFIED TOOLS AND/OR LIMITED EXPERIENCE WITH EVO MFG PRODUCTS MAY NOT BE ENOUGH TO PROPERLY COMPLETE THESE TASKS. SOME OF EVO MFG PRODUCTS MAY REQUIRE TWO OR MORE PEOPLE TO INSTALL SAFELY AND CORRECTLY. DO NOT ATTEMPT ALONE, ALWAYS ENLIST THE HELP OF TRAINED PROFESSIONAL WHEN NEEDED.

Notes: Set Up Before installation

This is a general instruction for this component kit.

Directions/pictures may vary for each specific install, use for reference only.

Keep all mounting bolts loose (installed but not torqued) we will torque later at the end of complete installation

STARTING LENGTH FOR JL/JT FRONT TRACK BAR CENTER TO CENTER, 34 1/4"

STARTING LENGTH FOR JL REAR TRACKBAR CENTER TO CENTER, 37 7/16"

STARTING LENGTH FOR JT REAR TRACKBAR CENTER TO CENTER, 33 9/16"

READ BEFORE INSTALL:

ALL measurements stated above are starting points only, every vehicle is different. Professional alignment is recommended.

It is generally a good idea to apply Loctite to all threaded bolts.

ALWAYS wear safety glasses and other approved safety gear when working on a vehicle.

All supplied bolts torqued according to chart at end of instruction.

It is recommended all installation be performed by a trained professional. Some modification may have to be done.

Paint all unfinished surfaces after install is complete.

Parts included: Table below shows JL/JT Trackbars.

Description	#	Part #	Quantity
JL/JT Front Trackbar	1	3047B	1
JT Rear Trackbar	2	3049B	1
JL Rear Trackbar	3	3048B	1



Note: For JL/JT FRONT and JT REAR trackbars, adjustable end attaches at AXLE side. For JL REAR adjustable end goes to FRAME side.



Recommended Tools:

- Standard socket set w/ wrench
 - OR Standard wrench set
-



Safety Steps for installation

- For installing EVO MFG products always use wheel chokes to block rear tires from rolling.
 - Always make sure you have everything necessary ready before install.
 - If you have to, carefully lift front of vehicle by front frame rails extending suspension until tires leave the ground, place frame on approved jack stands for vehicle. Verify all lines/wires are not over extended.
 - Remove tires if needed for easier install.
 - Make sure to wear safety equipment (eye protection, hand protection, foot protection etc.) at all times during installation.
 - Make sure all safety precautions have been taken.
 - Always check and replace any part of vehicle that is worn or broken before starting install.
 - Do not mix anything EVO with weaker alternatives.
 - It is generally a good idea to apply liquid threadlock to all bolts.
 - Tighten included hardware to torque specifications in bottom table unless it is otherwise specified, factory bolts should be torqued to factory Jeep specifications.
-

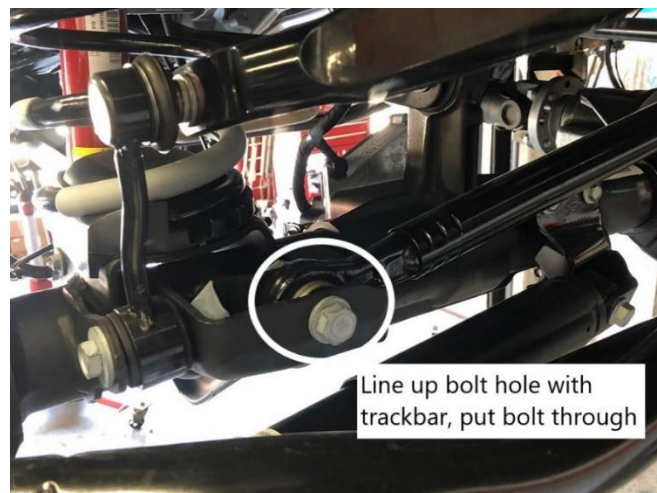
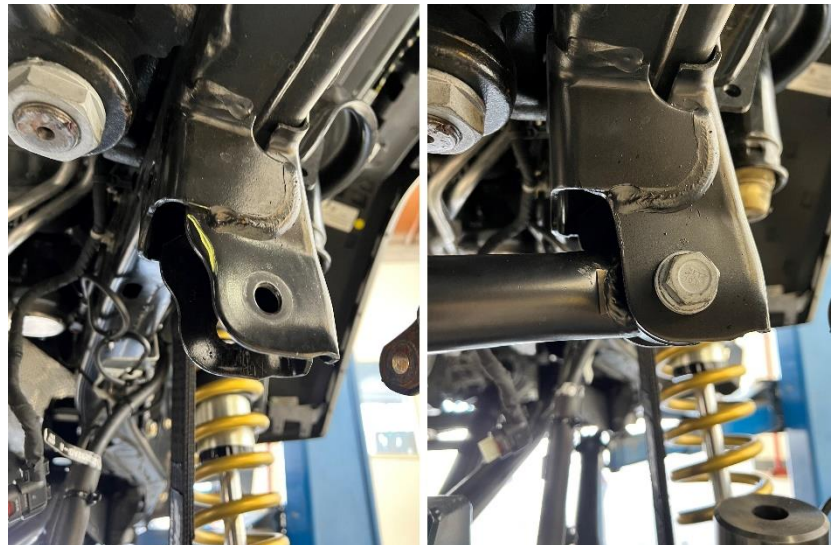




After alignment is complete and no additional adjustments are to be made to control arms. Torque all 1" Jam Nuts to 250 ft/lbs and all 1-1/4" Jam Nuts torque to 300 ft/lbs. Regularly check all jam nuts and punch bolts on all control arms for proper torque/tightness. Failure to do so may cause premature wear of threads on arms.

Front INSTALL:

1. With vehicle in park, on flat ground and emergency brake applied, remove the bolts on both ends of factory trackbar.
2. Clearance Front Trackbar Frame Pocket as Shown. Paint exposed metal before installing new bar.
3. Once factory trackbar has been removed, bolt new EVO MFG trackbar on ONLY TO THE FRAME SIDE.
4. The trackbar will need to be guided into the bracket at the axle. For the front trackbars turn the steering wheel until trackbar bolts line up.
5. Once trackbar lines up with hole in trackbar bracket on the axle side, insert factory bolt and loosely tighten bolt. Tighten bolts to specified torque.





After Install:

- Tighten all bolts securing purchased parts to specified locations.
- After completing installation using provided instructions, go through all steps again to make sure nothing was missed, not tightened or improperly assembled.
- Some components may need to be purchased separately.
- Check turn signals, headlights, fog lights (if applicable), taillights, blinkers and windshield wipers.
- Adjust mirrors, speedometer and headlights if needed.
- Make sure all gauges are fully operational.
- Drive the vehicle slowly for a couple minutes, looking and listening for abnormal noises while driving. After modification of a vehicle there will be differences in driving experiences and capabilities, be mindful of that.
- Inspect and Retorque all Bolts after 500 miles of completed installation and regularly thereafter.
- Some modification may be required.

Recommended Torque:

Size	Grade 2		Grade 5		Grade 8		18-8 S/S	
	Coarse	Fine	Coarse	Fine	Coarse	Fine	Coarse	Fine
#4*	-	-	-	-	-	-	5.2	-
#6*	-	-	-	-	-	-	9.6	-
#8*	-	-	-	-	-	-	19.8	-
#10*	-	-	-	-	-	-	22.8	31.7
1/4	4	4.7	6.3	7.3	9	10	6.3	7.8
5/16	8	9	13	14	18	20	11	11.8
3/8	15	17	23	26	33	37	20	22
7/16	24	27	37	41	52	58	31	33
1/2	37	41	57	64	80	90	43	45
9/16	53	59	82	91	115	129	57	63
5/8	73	83	112	128	159	180	93	104
3/4	125	138	200	223	282	315	128	124
7/8	129	144	322	355	454	501	194	193
1†	188	210	483	541	682	764	287	289