



**EVO-1138**  
**EVO MFG Rear Axle Truss**



PART#	DESCRIPTION	QTY
EVO-1138	EVO Rear Axle Truss	1

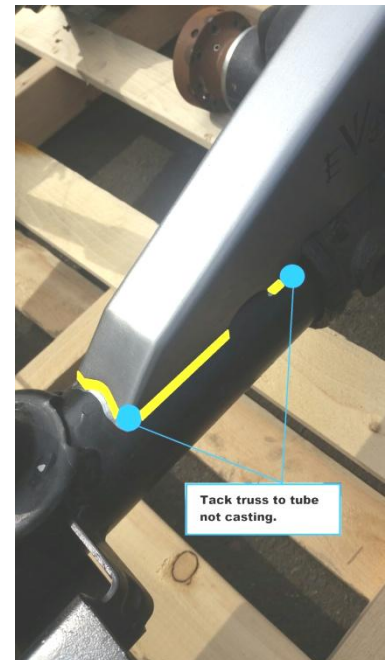
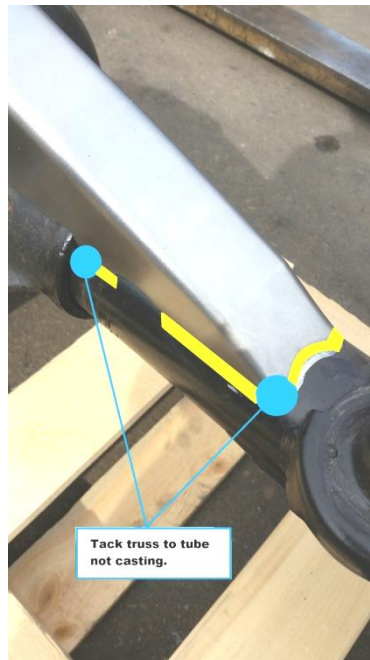
**NOTES: Recommended weld with axle suspended not under load of vehicle.  
Only weld to cast if you are experienced in the process, welding to cast is not required.  
1 inch minimum bump stop extensions required to clear factory exhaust.**

**Installer do a full inspection for clearance on all surrounding components prior to welding.  
Some grinding / sanding may be required to achieve your desired fitment.**

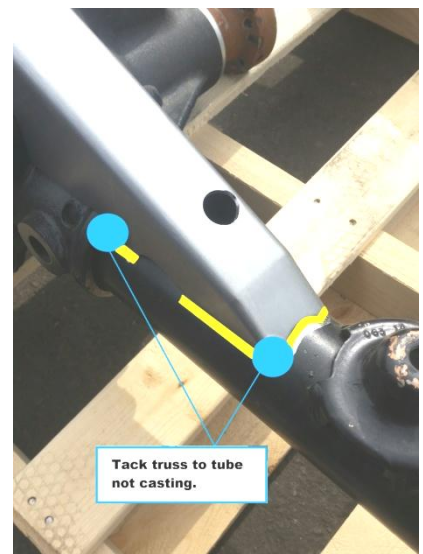
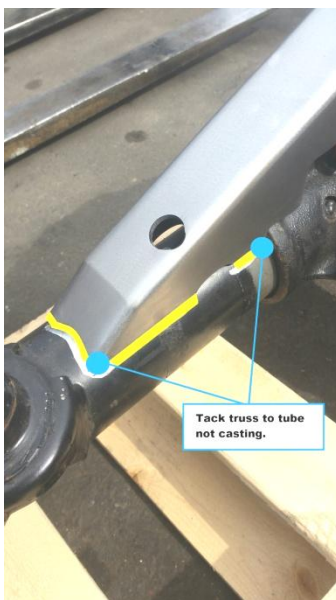
1. Remove axle breather tube from axle fitting.
2. Place EVO MFG Rear Axle truss on top of your rear axle, be sure to verify breather tube hole is aligned properly with breather fitting on axle tube.
3. Align Truss square with axle. May require slight sanding / grinding to achieve your desired fitment.



4. Verify OE wiring connectors for rear locker are clear and removable.
5. Tack truss to axle tubes as illustrated in photos by circles on both driver and passenger side front and rear as well as outer ends of truss.
6. Due to aftermarket components variances, verify surrounding component clearances around truss. Trackbar, exhaust, wiring, etc, through cycle up and down.



7. Weld all contact points between truss and axle as illustrated in photos by bold lines. As previously mentioned it is not necessary to weld to casting. If welding to the casting is desire please be sure that the installer is experienced with the process.



8. Reinstall axle breather tube to fitting.
9. Paint or coat truss.