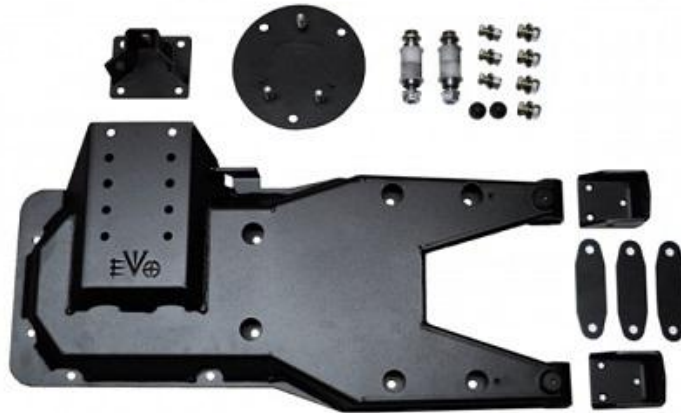




EVO-1162

EVO Tailgate Tire Carrier



Bill of Materials

Part number	Description	Quantity
EVO-12161	EVO Tailgate Tire Carrier	1
EVO-12162	Bolt Plate	1
EVO-12163	Wheel Mount	1
EVO-12165	Hinge Bracket	2
EVO- 12166	Tire Carrier Spacer	3
EVO- 12167	Tire Carrier Hinge Tubes	2
EVO-12177	Lower Door Catch Bracket	1
EVO-12178	Upper Door Catch Bracket	1
EVO- 770058	Tailgate Tire Carrier Hardware Pack	1

Note: An Extra Long T50 Torx bit is recommended to make this install more efficient

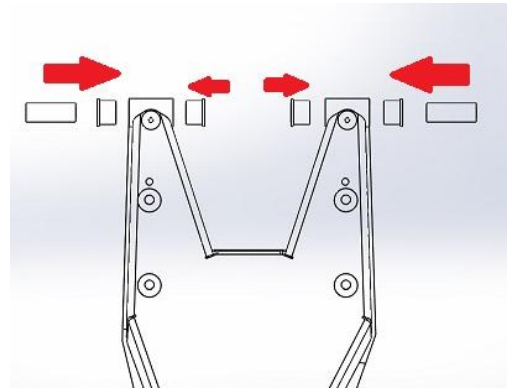
Note: The Tailgate Tire Carrier is recommended for tire sizes up to 37"

Note: A wheel spacer may be required for wheel/tire combos with a large backspacing number.

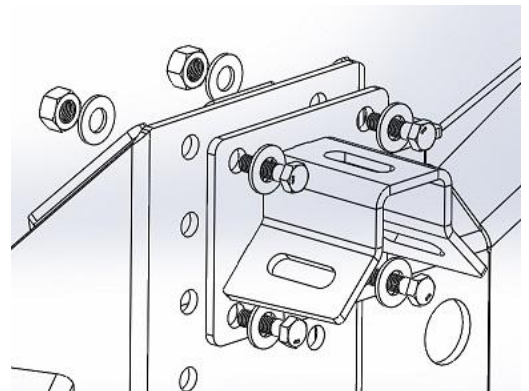
Note: Due to the Heavy duty, oversized hinge hardware, the tailgate pivot will be slightly shifted. This may result in a click when opening/closing the tailgate. This is normal

POWDERCOATED TIRE CARRIERS ARE COATED ON THE EXTERIOR ONLY

1. Check that the barrels are clean and free of coating. Light sanding may be required. Install the 4 hinge bushings and 2 inner sleeves into both hinge barrels. Use a light oil (WD-40) inside the barrel, these should have a snug fit. A light tap with a rubber mallet may be required to seat the bushings, but do not force them. Hand install at first and only tap to seat them. These will not require further oil, just during install.



2. Using 4 supplied 7/16 bolts, 4 lock nuts, and 8 washers (11/16 wrench and socket), secure the bolt plate to the tire carrier. There are location options, all the way up is recommended for clearance, but lower locations will increase rear window visibility. You will need to access the inside of the Tailgate Tire Carrier to reach the nuts so be sure to do this before bolting it to the tailgate.



3. Using a 3/32 Allen wrench and 11/32 wrench (or adjustable) install the rubber bumper onto the hinge as shown. On the top hinge, install the bumper in the bottom hole. On the bottom hinge install the bumper in the top hole.



- Using a T30 Torx bit, remove the 2 screws holding the door catch to the inside of the tailgate, as shown. With the bolts removed, pull the door catch out from the body of the vehicle.



- Remove the 8 bolts around the vent in the center of the tailgate as well as the plastic trim covering the hinges. Set the bolts aside to reuse later



- With the tailgate closed and your vehicle on level ground, remove the factory hinges by removing the 4 bolts on the tailgate (13 mm wrench) and the 6 bolts on the body (Torx T50). Set bolts aside to reuse later.



Note: Do not open your tailgate after step 6!

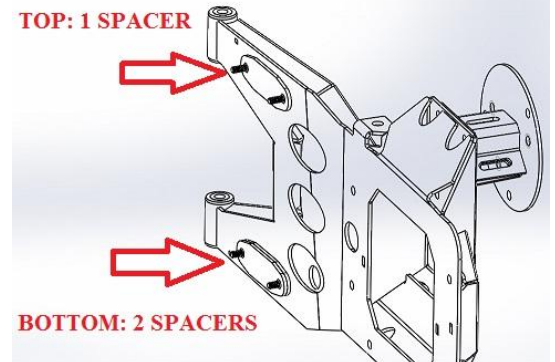
- Using the 6 T50 Torx bolts removed in step 6, loosely bolt the Tailgate Tire Carrier hinges to the body. Don't tighten the hinges at this time.



- Install the Tailgate Tire Carrier into the hinges and slide the supplied 4" long 9/16 bolts, washers and lock nuts through to secure it to hinges. Do not tighten at this time



- Using the 4 bolts that mounted the factory hinges to the tailgate in step 5, slide them into the 4 holes from the outside as shown. On the top, hang 1 of the supplied oval spacers and on the bottom, hang 2 spacers from the inserted bolts as shown.



- Slowly swing the Tailgate Tire Carrier closed being sure the bolts and spacers stay in place. As the Tire carrier comes flush with the tailgate, make sure the 4 bolts line up with the 4 holes in the tailgate. Use a 13mm socket with extension to thread the right side bolts first, then the left. Do not tighten them at this time.



11. Using 6 of the 8 bolts that were surrounding the vent in the center of the tailgate (removed in step 5), thread them into the remaining 6 openings in the Tailgate Tire Carrier. These can be accessed using a 13mm socket and extension as shown.



12. Once all the bolts are threaded to the tailgate, fully tighten all bolts to tailgate only.

Note: If you don't have an extra-long T50 bit, this install can still be done, but it may require 2 people. After completing step 12, start by opening the tailgate and applying upward pressure on the tire carrier and tailgate. Tighten the bolts on the inside of the hinges (Pictured in step 14). You then need to check and verify that the tailgate closes and latches properly. If it does not, loosen the bolts, adjust and retighten. It may take several tries.

13. With the tailgate closed use the Extra Long T-50 bit, tighten the 2 bolts on the passenger side of each hinge (1 bolt per hinge). Note: If you do not have an extra-long T50 bit. With the tailgate closed, you will need to remove the 9/16 bolts from the hinges. Leaving the tailgate latched, carefully swing the tailgate out from the hinges to access and tighten the remaining 2 T50 bolts.

14. Open the tailgate and tighten the 4 bolts on the inside of each hinge (2 bolts per hinge)
Note: If you're following the instructions for install without the extra-long T50 bit, you already tightened these bolts after step 12



15. Tighten the 9/16" bolts through the hinges.

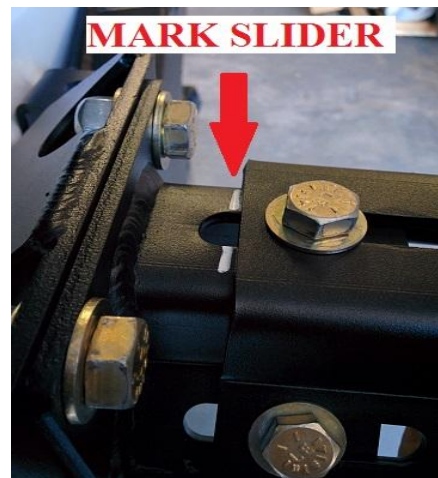
Note: Because the hinges are designed to have a high quality, precision fit, they may feel slightly resistive at first.

NOTE: Steps 16-19 must be followed closely to prevent rattle/tire vibration.

16. Loosely bolt the Wheel Mount to the Bolt Plate using 3 supplied 7/16 bolts, locknuts and washers. Make sure this part can still slide.



17. Install your wheel and tire and fully tighten the lug nuts to the wheel mount. With the tire secured, slide it toward the tailgate until the tire contacts the tire carrier. On the slider, mark on the bolt plate where it stops (this is easier to mark with the tailgate open).
Note: If your wheel/tire combo is beyond the reach of the support mount, you will need to use a wheel spacer.



18. Once slider is marked, remove the wheel and tire.
19. Move the slider back (toward the tailgate) to cover the mark you made in step 17 (you should move it back around 3/16 in over your mark). Fully tighten the 3 bolts on the slider so that it can no longer move.

Note: Steps 20-22 are optional for reinstalling the door catch

20. On the door catch pin, one side has a wider mushroom head than the other. Using a 3/8 drill bit, drill this head until the mushroom is removed. Remove the bracket. **Do Not Drill Through Plastic Door Catch**



21. Use the supplied 1/4" bolt and locknut (7/16 wrench and socket) to bolt the supplied slotted mounting bracket to the door catch. Do not use the washers. Do not overtighten, tighten just enough that the catch will rotate between brackets.

22. Reinstall the door catch with the new bracket. Start by loosely bolting the door catch back with the new bracket and supplied washers as shown. While holding the catch in place, gently close the door until it is reinserted into the vehicle body. Once the catch is back in place, open the tailgate and slide the bracket all the way toward the vehicle and tighten the screws as shown.



23. Put the wheel and tire (as well as EVO-1163 Gas Can Holder) on and fully tighten the lug nuts.

Note: If you have, or are planning to install EVO-1120 Tailgate Jack Mount, it can be installed using the 2 remaining M8 bolts removed in step 5.