

advanced FLOW engineering Cold Air Intake System

Instruction Manual P/N: 57-10022D / 57-10022K

Make: RAM

Model: 1500 TRX

Year: 2021-2023

Engine: V8-6.2L (sc)



- Please read the entire instruction manual before proceeding.
- Ensure all components listed are present.
- For technical support please call 951-493-7185.
- Ensure you have all necessary tools before proceeding.
- Do not attempt to work on your vehicle when the engine is hot.
- Retain factory parts for future use.

Label	Qty.	Description	Part Number
A1	1	Air Filter (Pro 5R Black)	24-90202K
A2	1	Air Filter (Pro DRY S)	24-90202D
B	1	Carbon Intake Tube	05-5710022C1
C	1	Housing	05-5710022B2
D	1	Coupling, Silicone Reducer: 108mm x 100mm x 3"L	05-01703
E	1	Clamp, 072 (3" - 5")	03-50010
F	1	Clamp, 064 (3-9/16"- 4-1/2")	03-50006
G	4	Bumper, Rubber: 1/2" ID x 1" OD	03-50769
H	2	Screw, Engraved aFe POWER: M6 x 1.0mm	03-50483
J	2	Grommet, Rubber 3/8" ID x 13/16" OD	03-50783
K	1	Bracket, Drivers Side	05-01741
M	1	Bracket, Passenger Side	05-01738
N	4	Button Head Screw; M6x1.0x16	03-50782
P	4	Washer, Flat: M6	03-50070
Q	4	Washer, Lock: M6	03-50071
R	1	Trim Seal (56" Length)	05-01534
S	2	Push Clip: 6.5mm x 22mm	03-50773
T	1	Hose, Silicone Breather: 1/2" ID, Black (8" Length)	05-01396

Installation will require the following tools:

Trim removal tool, Ratchet, 12" Ratchet Extension, 10mm, 13mm, 8mm sockets, T30 Torx driver, Razor blade, 3mm Allen key

Warranty Information available at <https://afepower.com/contact#warranty>

Emissions Disclaimer: This product is not currently CARB exempt and is not available for purchase in California or for use on any vehicle registered with the California Department of Motor Vehicles.

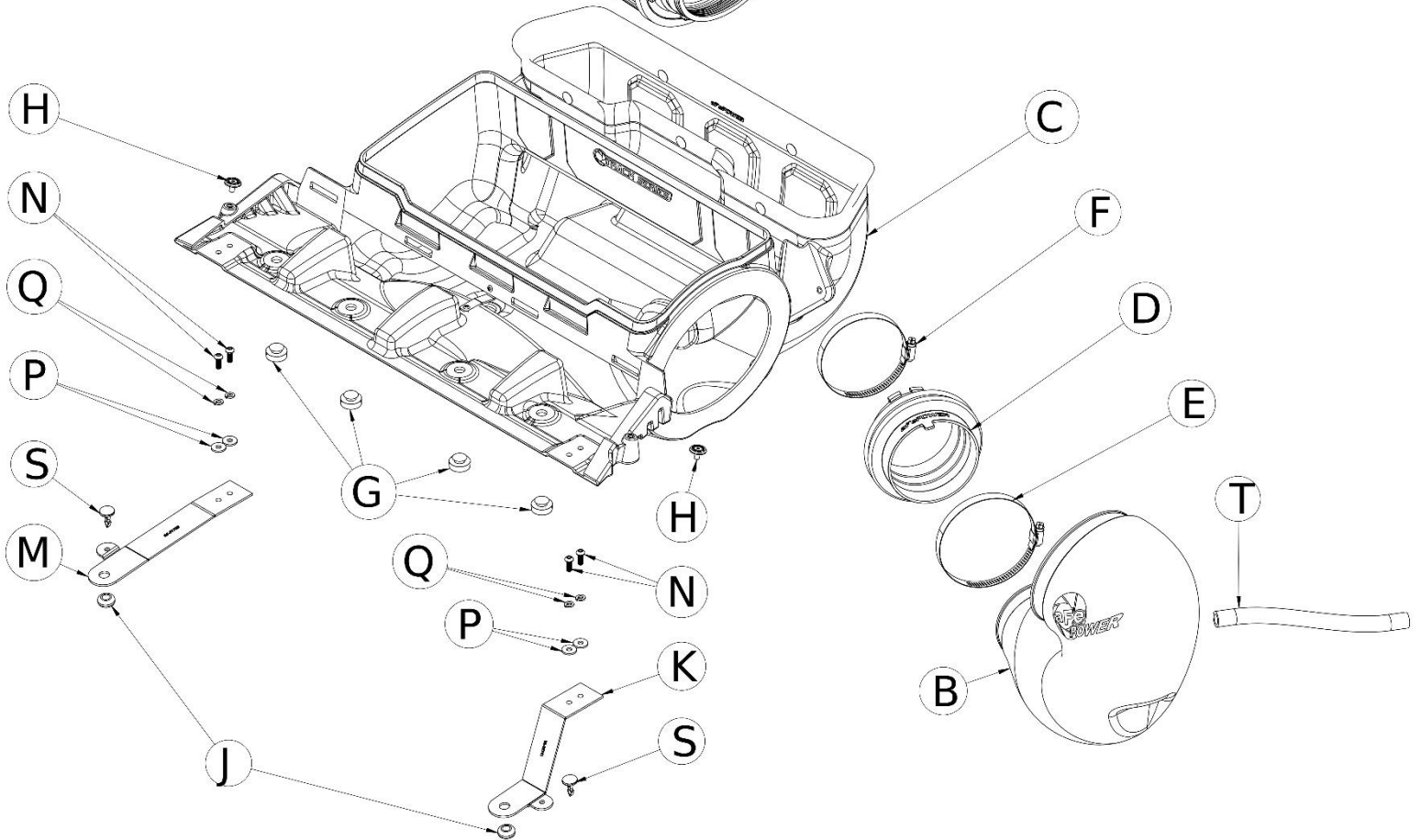
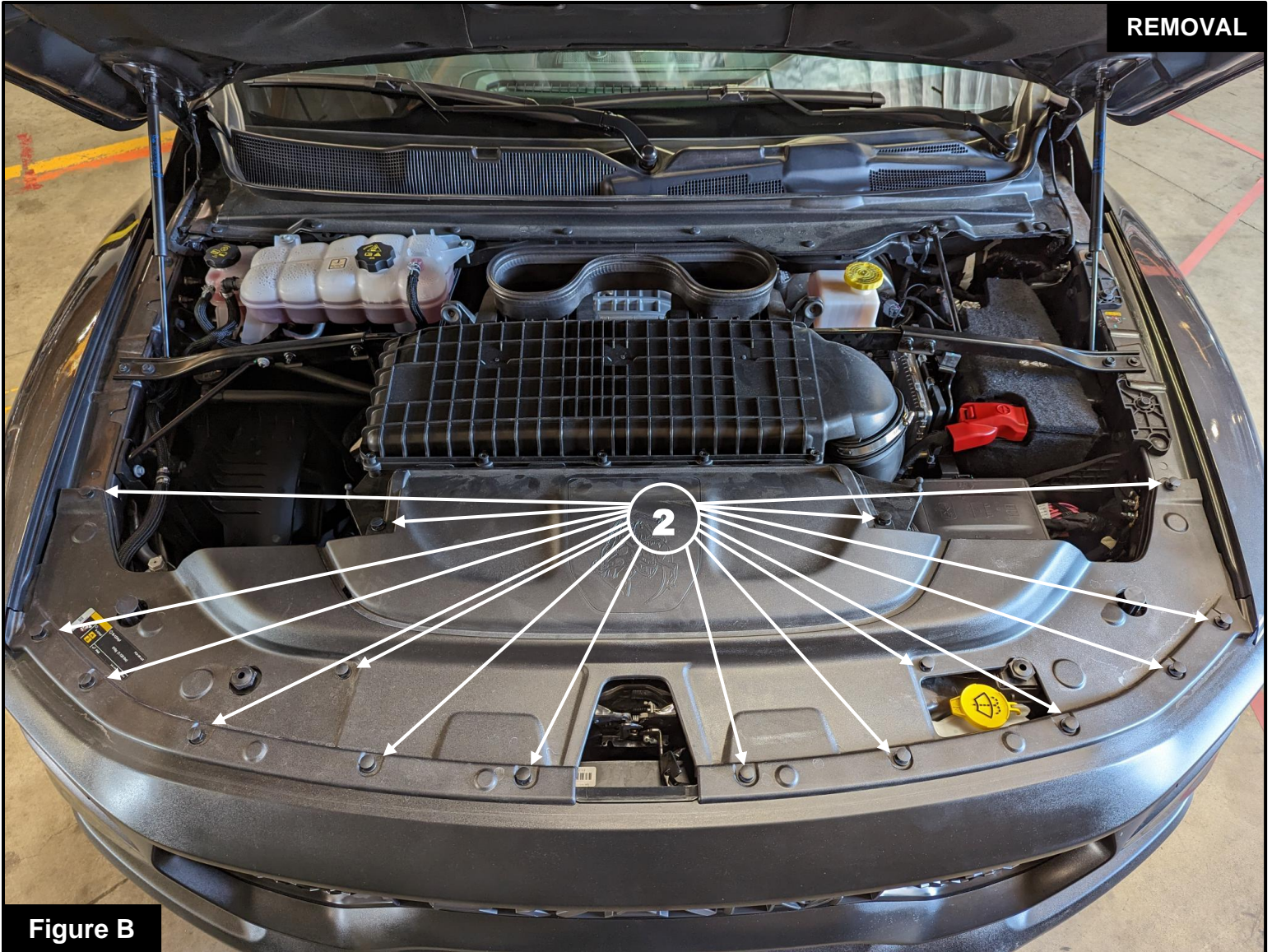




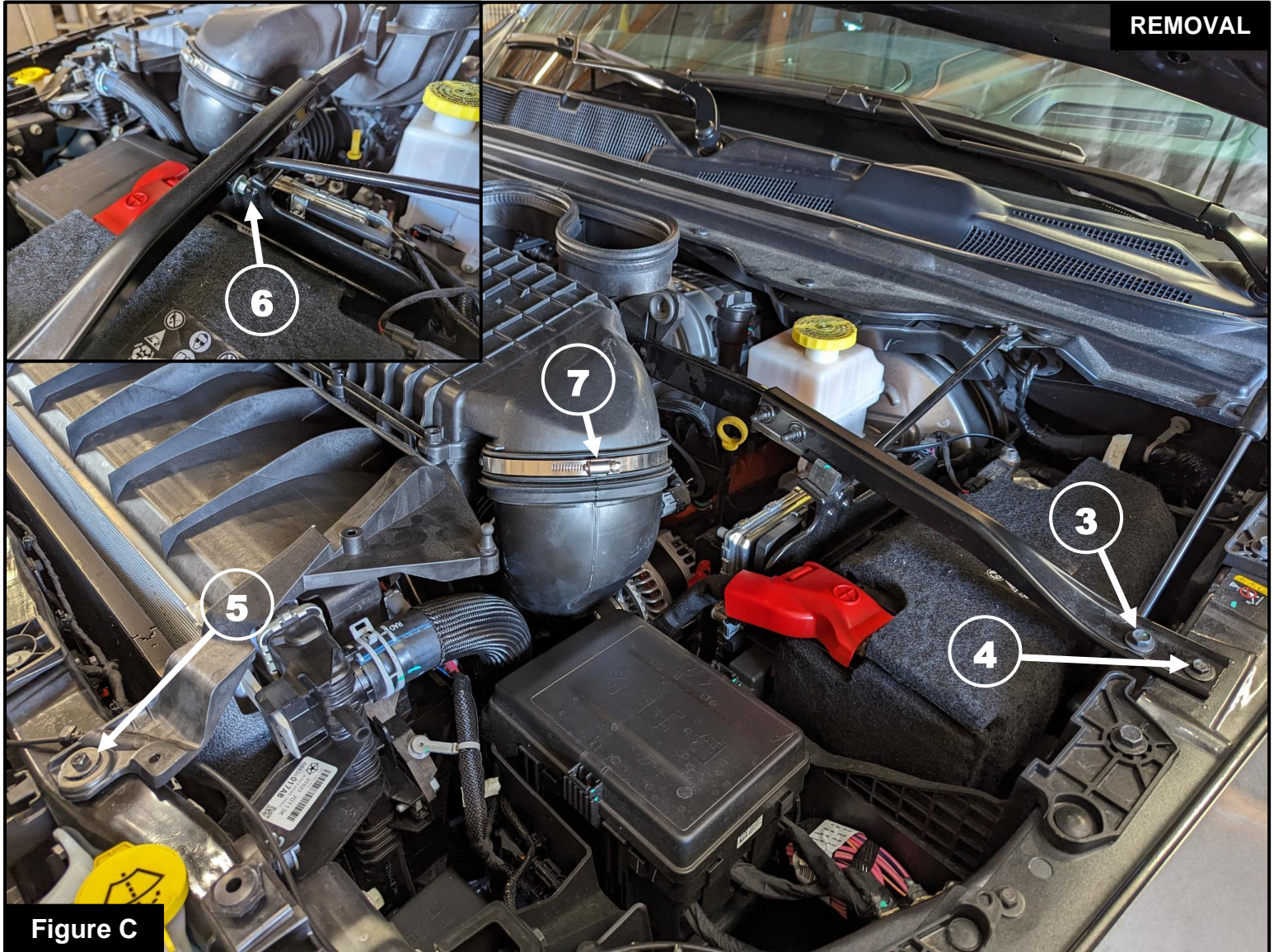
Figure A

Refer to Figure A for Step 1

Step 1: Remove your engine cover ①.

**Figure B****Refer to Figure B for Step 2**

Step 2: Using a small trim removal tool, remove the sixteen (16) clips ② securing the factory front cowl, then remove the front cowl.

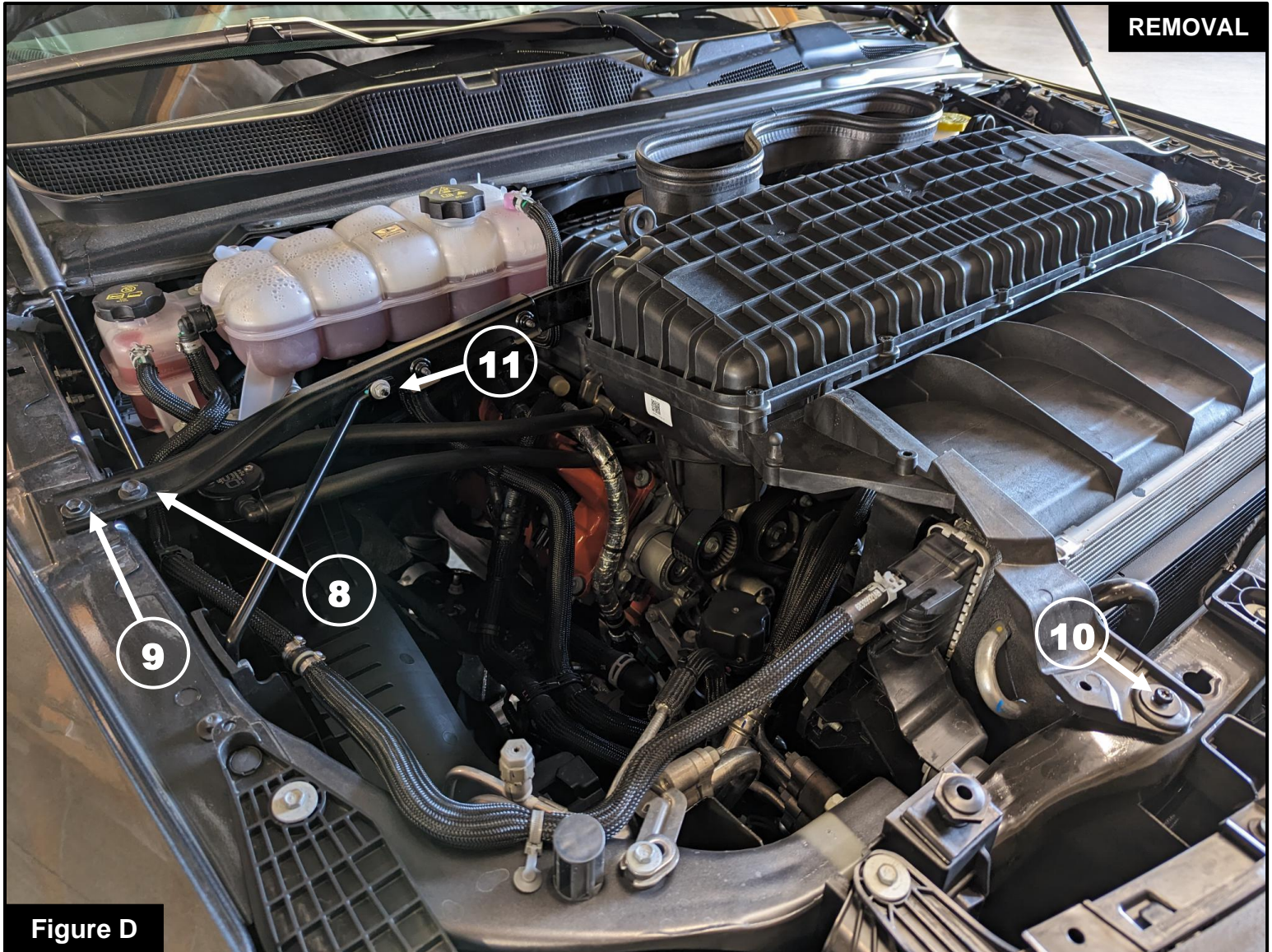


Refer to Figure C for Steps 3-5

Step 3: On the driver side of the vehicle, use a 13mm socket and driver to remove the larger screw (3) securing the factory intake brace.

Step 4: Using a 10mm socket and driver, remove the smaller screw (4) securing the factory intake brace as well as the screw (5) securing the factory airbox to the core support in the front of the vehicle. Remove the single nut (6) on the back side of the factory intake brace using a 10mm socket and driver.

Step 5: Using an 8mm socket and driver, loosen the clamp (7) at the factory intake tube and disconnect it from the factory airbox.



REMOVAL

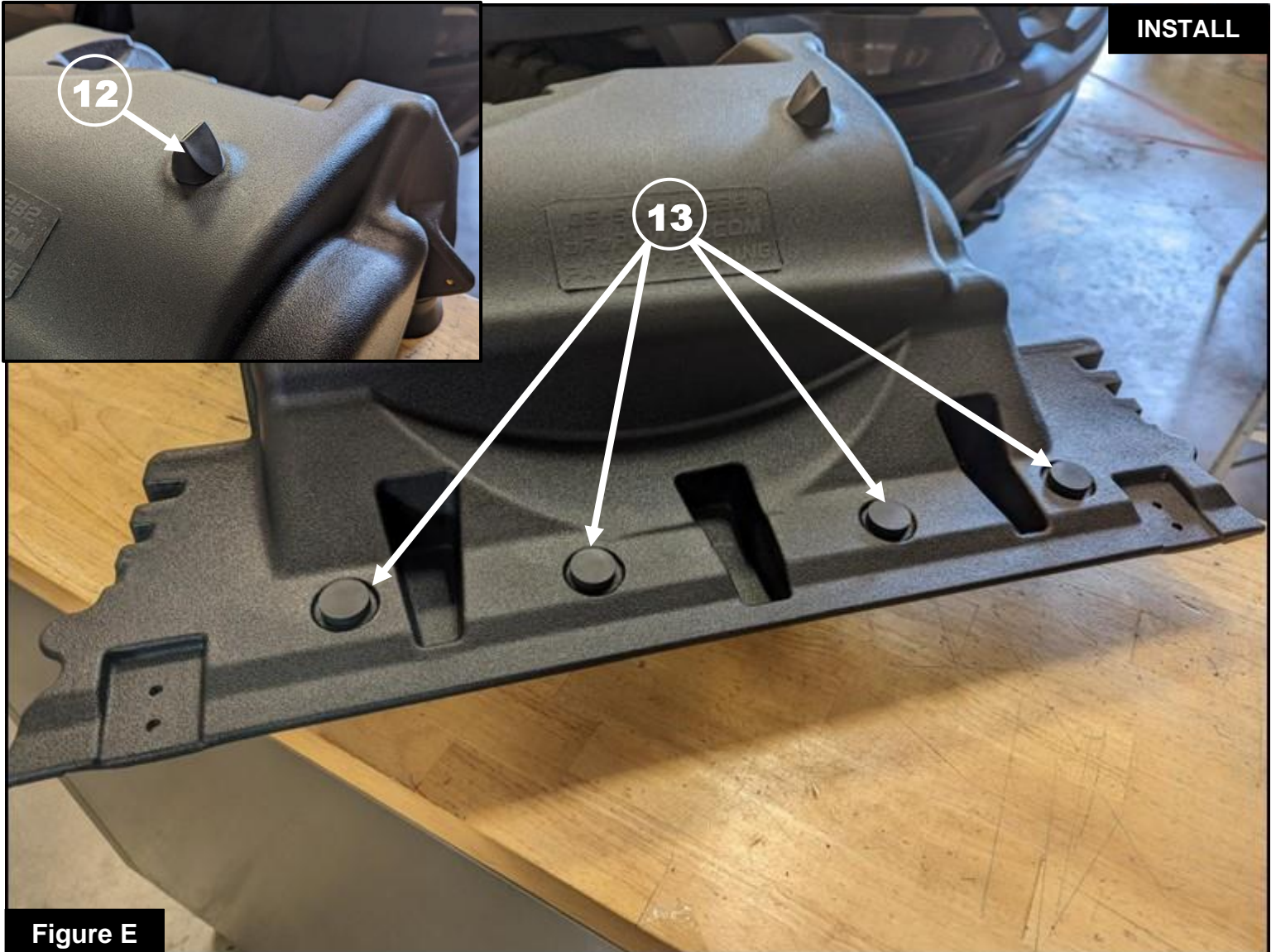
Figure D

Refer to Figure D for Steps 6-8

Step 6: On the passenger side of the vehicle, use a 13mm socket and driver to remove the larger screw (8) securing the factory intake brace.

Step 7: Using a 10mm socket and driver, remove the smaller screw (9) securing the factory intake brace as well as the screw (10) securing the factory airbox to the core support in the front of the vehicle. Remove the single nut (11) on the front side of the factory intake brace using a 10mm socket and driver.

Step 8: Carefully lift the factory intake assembly and brace out of the vehicle leaving the factory intake tube in the vehicle.

**Figure E****Refer to Figure E for Steps 9-10**

Step 9: Transfer the rubber drain (12) from the factory airbox to the hole on the bottom of your aFe POWER housing.

Step 10: Install the four (4) supplied rubber bumpers (13) into the 1/2" holes on your aFe POWER housing with the large padded side towards the bottom as shown.

**Figure F****Refer to Figure F for Steps 11-12**

Step 11: Install the supplied brackets (14) onto your aFe POWER housing as shown with the bracket mounting tabs towards the outside of the housing. Secure the brackets with the provided M6 screws and washers, placing the lock washer between the flat washer and the screw head.

Step 12: Install the supplied rubber grommets (15) into the larger holes at the front of the brackets.



Figure G

Refer to Figure G for Step 13

Step 13: Install the supplied length of trim seal along the edge of your aFe POWER housing. Trim as needed for proper fitment.

**Figure H****Refer to Figure H for Step 14**

Step 14: Using an 8mm socket and driver with an extension, loosen the ten (10) screws **16** sealing the factory airbox and remove the lid.

**Figure I****Refer to Figure I for Step 15**

Step 15: Using a T30 Torx driver, remove the four (4) screws (17) securing the factory intake brace to the factory airbox and remove the factory intake brace.

**Figure J****Refer to Figure J for Step 16**

Step 16: Install the factory intake brace onto your aFe POWER housing using two (2) of the T30 Torx screws **18** removed in the previous step. Do not overtighten the screws.

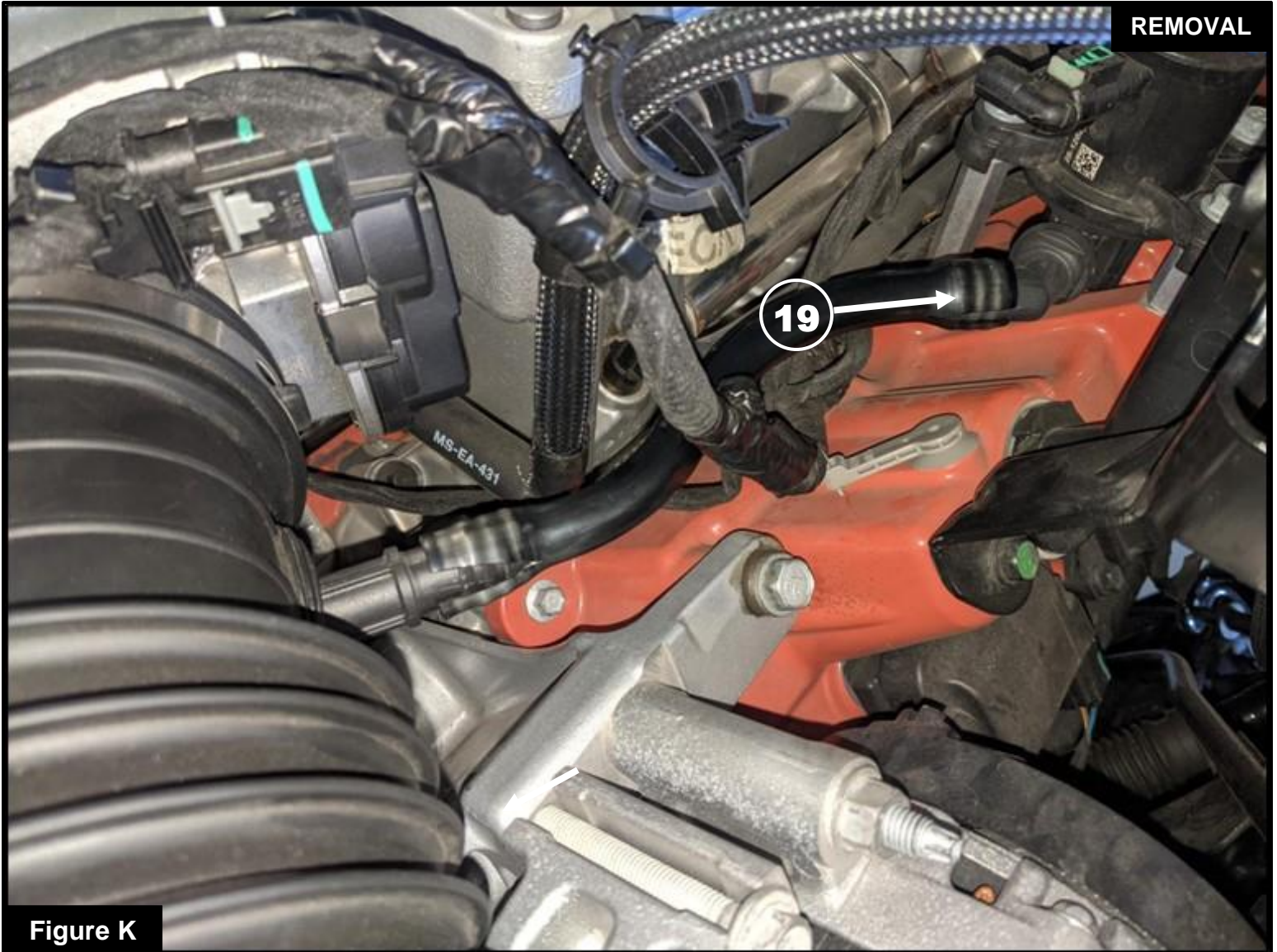


Figure K

Refer to Figure K for Step 17

Step 17: Using a razor blade, carefully cut the plastic line (19) connected to the MUA system on the valve cover. If you ever need to reinstall the factory intake, we recommend using heat-shrink to cover the cut section of the plastic line.

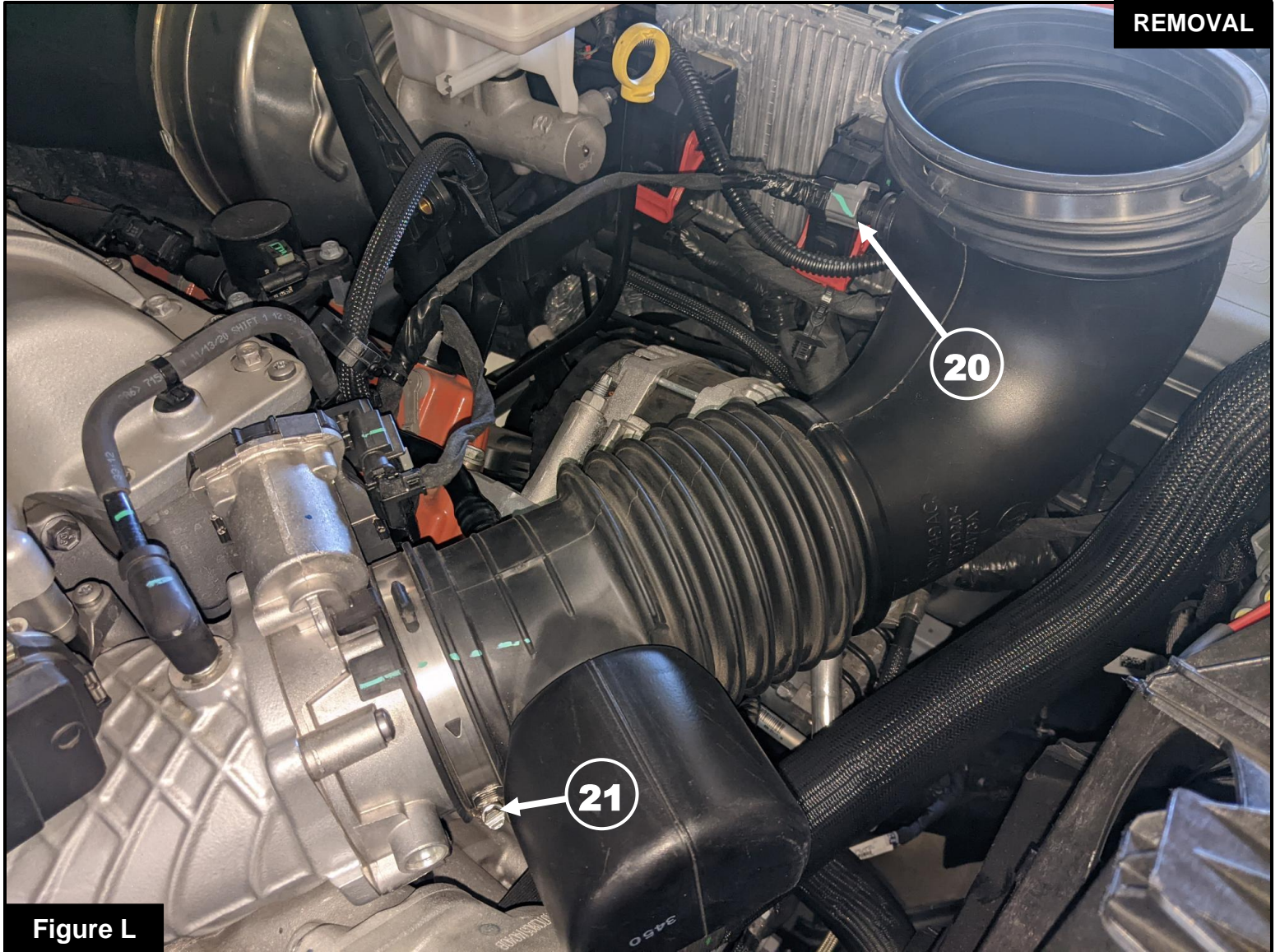


Figure L

Refer to Figure L for Steps 18-19

Step 18: Disconnect the IAT sensor electrical connector (20) from the factory intake tube.

Step 19: Using an 8mm socket and driver, loosen the clamp at the throttle body (21) then remove the factory intake tube.

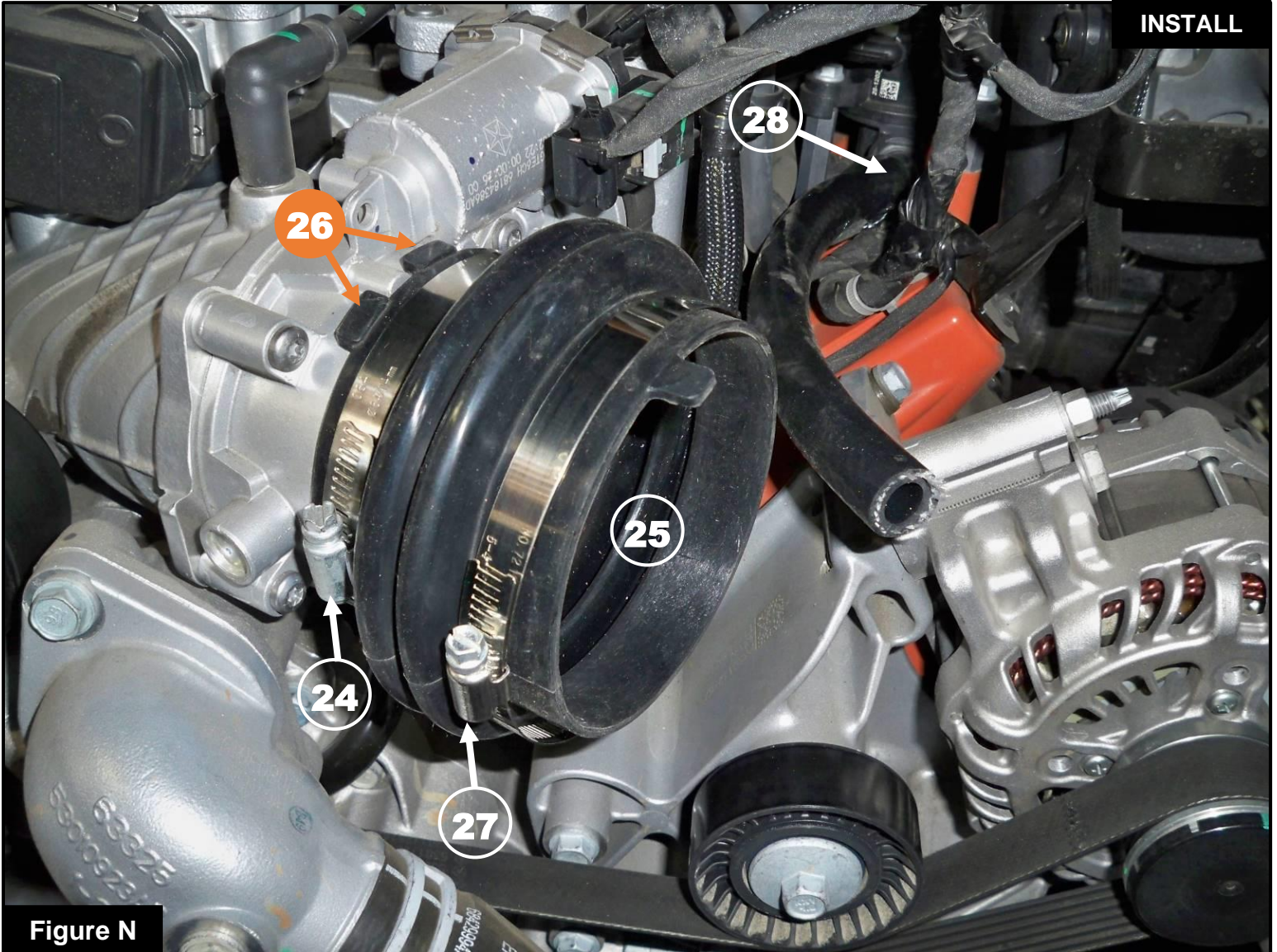


Figure M

Refer to Figure M for Steps 20-21

Step 20: Remove the IAT sensor (22) from the factory intake tube by rotating ¼ turn counterclockwise and gently pulling it out.

Step 21: Install the IAT sensor into the temp sensor fitting (23) on the aFe POWER intake tube by rotating ¼ turn clockwise until it locks into place.


Figure N

Refer to Figure N for Steps 22-24

Step 22: Install the supplied #64 (24) clamp and bellow coupling (25), with the smaller side on the throttle body. Make sure the indexing tabs (26) are straddling the index on the throttle body as shown. Once aligned, secure the clamp using an 8mm socket and driver.

Step 23: Place the supplied #72 clamp (27) onto the open end of the bellow coupling.

Step 24: Install the supplied length of hose (28) onto the MUA system as shown.

**Figure O****Refer to Figure O for Steps 25-27**

Step 25: Install the aFe POWER intake tube into the bellow coupling at the throttle body making sure to align the index tab (29) on the coupling with the index on the tube as shown. Secure the clamp using an 8mm socket and driver.

Step 26: Connect the IAT sensor electrical connector (30).

Step 27: Connect the hose (31) to the vent tube on your aFe POWER intake tube. Cut the hose to the desired length for perfect fitment.



Figure P

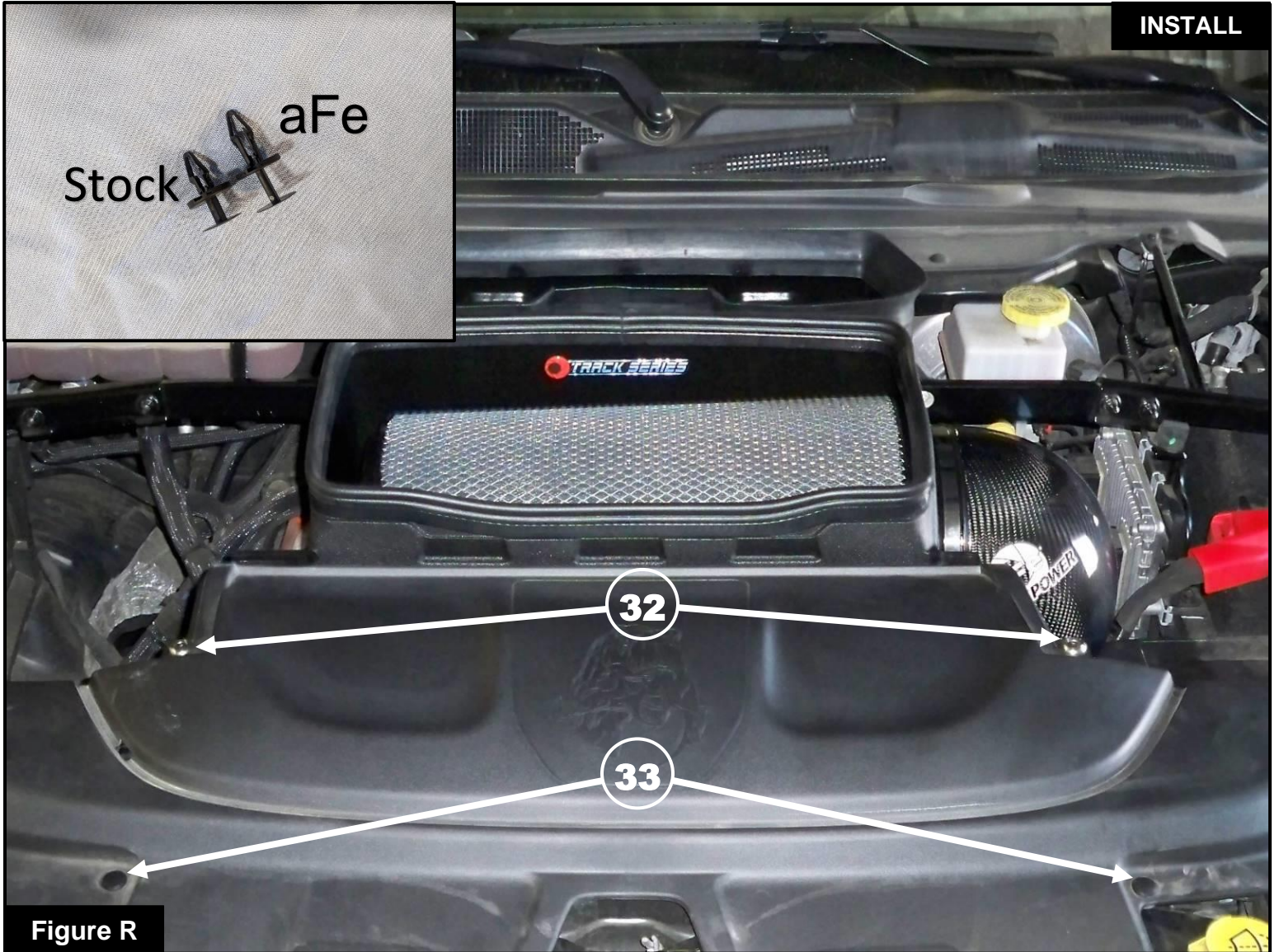
Refer to Figure P for Step 28

Step 28: Remove the filter clamp from the aFe POWER filter. Slide the aFe POWER filter into the aFe POWER housing from the top. Then guide the filter flange through the oval opening in the housing and snap in the filter. Place the filter clamp on the filter flange.

**Figure Q****Refer to Figure Q for Steps 29-30**

Step 29: Install your aFe POWER housing assembly back into the vehicle by following steps 3-7 in reverse order, using the factory hardware.

Step 30: Insert the open end of your aFe POWER intake tube into the aFe POWER filter opening. Secure the aFe POWER filter by tightening the worm clamp using an 8mm nut driver.

**Figure R****Refer to Figure R for Steps 31-32**

Step 31: Reinstall the factory cowl on the front of the truck. Secure the cowl first using the two (2) supplied M6 screws and washers (32) in the top holes that line up on the aFe POWER housing. Use a 3mm allen key to tighten the screws.

Step 32: Install the supplied 22mm push clips (the longer clips) into the two (2) locations (33) above the housing brackets.

**Figure S****Refer to Figure S for Step 33**

Step 33: Using the rest of the clips removed in step #2, secure the factory cowl to the front of the vehicle.

There should be 4 factory clips remaining when the installation is complete.

Your installation is now complete. Thank you for choosing aFe POWER!

NOTE: Check all screws, clamps, and connectors are secure after 100-200 miles.



Page left blank intentionally



advanced FLOW engineering, inc.

Corona, CA 92879

TEL: 951.493.7100 • TECH: 951.493.7185

E-Mail: Tech@aFepower.com