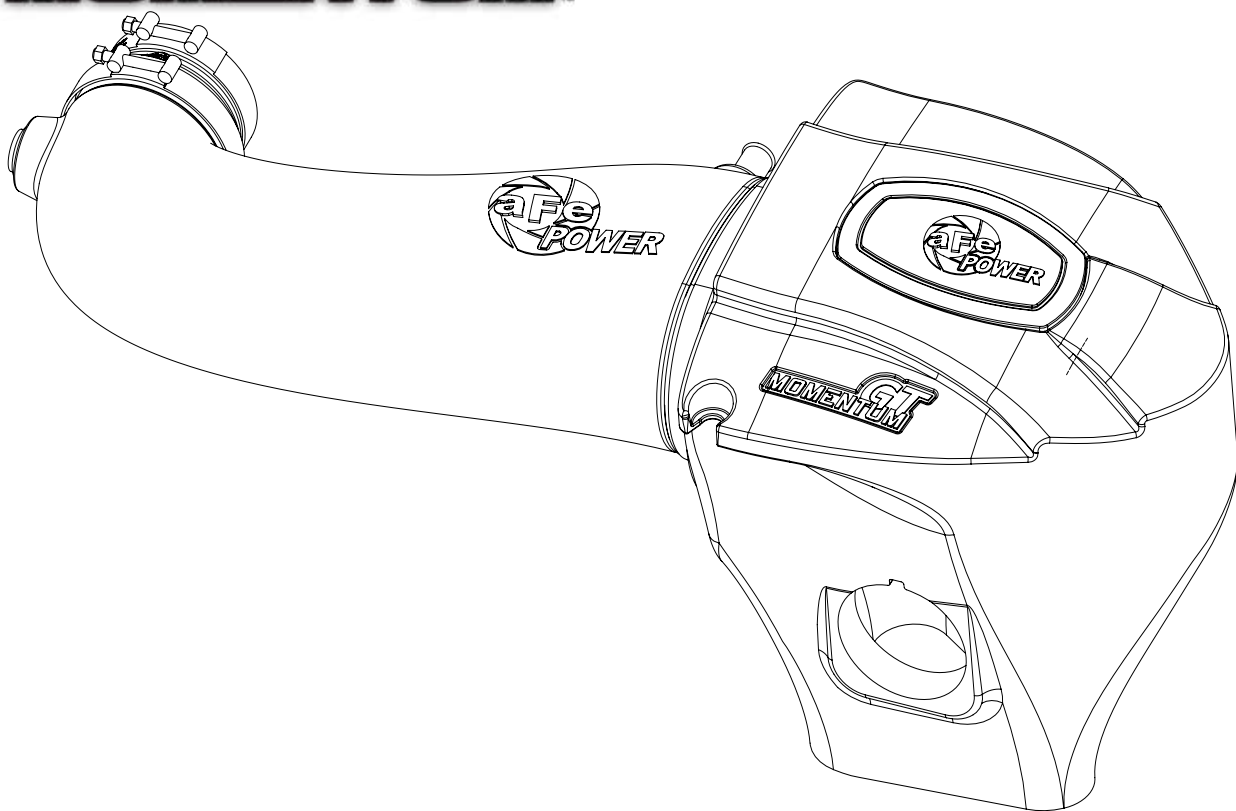




GT
MOMENTUM™



advanced FLOW engineering

Cold Air Intake System

Instruction Manual P/N: 51-72202-R

Make: Chrysler **Model:** 300

Year: 2011-2014

Engine: V8-5.7L HEMI

Make: Dodge **Model:** Challenger

Year: 2011-2023

Engine: V8-5.7L HEMI

Make: Dodge **Model:** Charger

Year: 2011-2023

Engine: V8-5.7L HEMI



- Please read the entire instruction manual before proceeding.
- Ensure all components listed are present.
- If you are missing any of the components, call customer support at 951-493-7185.
- Ensure you have all necessary tools before proceeding.
- Do not attempt to work on your vehicle when the engine is hot.
- Retain factory parts for future use.

Label	Qty.	Description	Part Number
A	1	Air Filter (Pro DRY S)	21-91092 (Grey Media)
B	1	Tube	05-72202R1
C	1	Housing	05-72201R2
D	1	Clamp, T-Bolt (3-3/4"-4-1/16")	03-50265
E	1	Clamp, T-Bolt (4-1/8"-4-1/2")	03-50262
F	1	Seal, Trim; 3/4" Bulb, 15/64" Edge (21")	05-01507
G	1	Coupling, Silicone Reducer	05-01358
H	1	Grommet	03-50167
I	1	Fitting, Air Temp Sensor	05-01454
J	1	Plug, Housing	05-01361
K	1	Mini Clamp #10	03-50078
L	1	Silicone Hose (10.5")	05-01502

*NOTE: All Installation photos are of the black version of this kit. All steps are the same.

Tools needed: 8mm and 10mm nut driver or socket & flat head screw driver.

Warranty Information available at: <https://afepower.com/contact#warranty>

Emissions Disclaimer:

This product is not currently CARB exempt and is not available for purchase in California or for use on any vehicle registered with the California Department of Motor Vehicles.

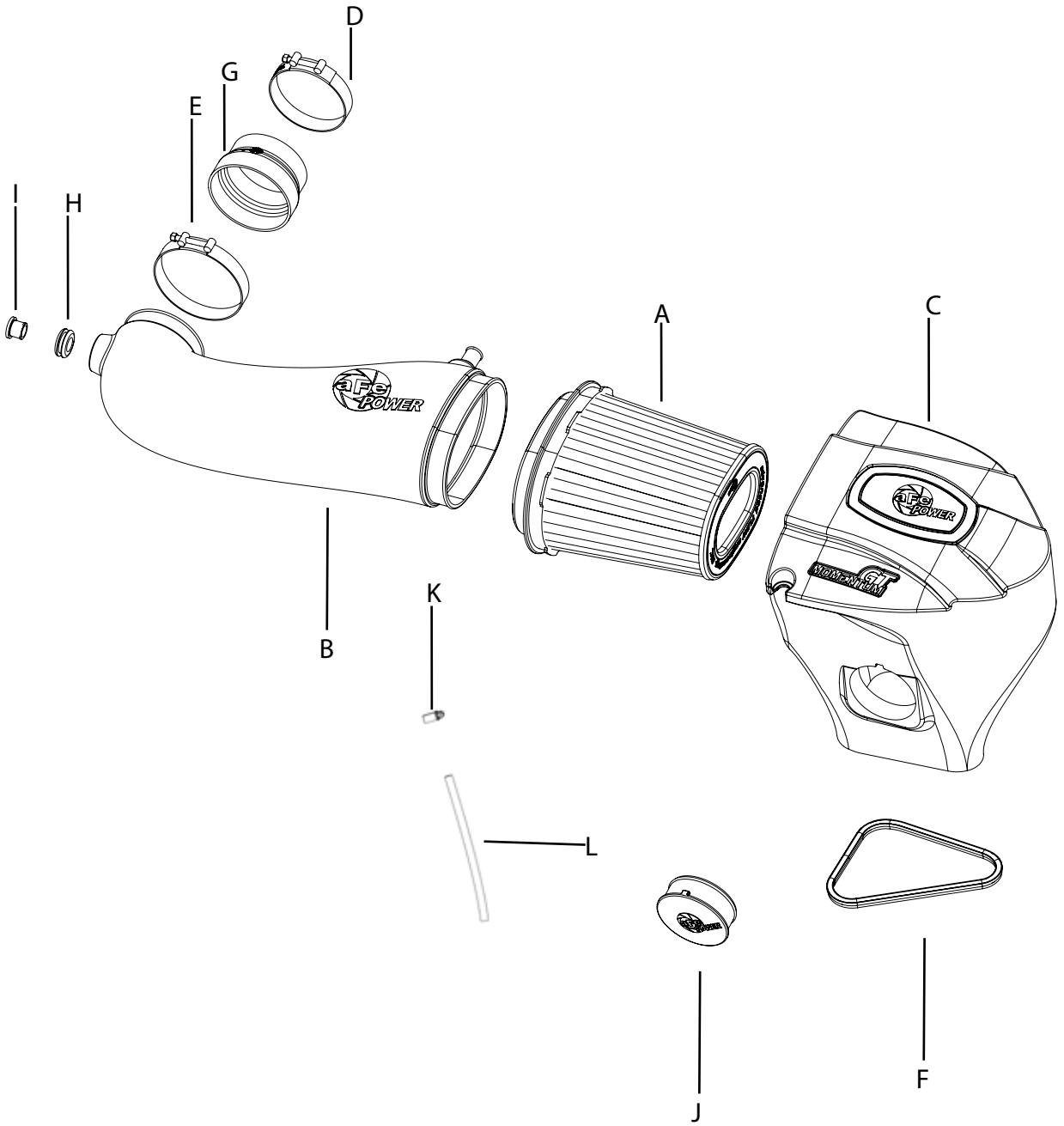




Figure A

Refer to Figure A for Steps 1-5

Step 1: Remove the engine cover. For 2011 to 2019 models disconnect the crank case hose from the intake tube, for 2020+ models remove the crank case hose from the vehicle completely.

Step 2: Remove 8mm bolt off the factory air box.

Step 3: Loosen clamp off the factory intake tube.

Step 4: Unplug Temp sensor.

Step 5: Pull the factory intake air system out of the vehicle.



Figure B

Refer to Figure B for Steps 6-8

Step 6: Transfer the grommet from the factory air box to the aFe housing.

Step 7: Install the trim seal on the bottom edge of the aFe housing.

Step 8: Slide the aFe filter inside the aFe housing until it locks in place. Install clamp on the filter end but do not tighten at this time.



Figure C

Refer to Figure C for Step 9

Step 9: For the 2015+ Challenger, if you wish to use the headlight inlet duct, pop the cap off the center of the headlight and install on the aFe housing the aFe inlet duct (Sold Separately, P/N: 54-72203-S). For all other vehicle, leave the housing inlet open to get more air or close it off with the furnished plug to block off the hot engine air.



Figure D

Refer to Figure D for Steps 10-12

Step 10: Make sure factory grommet is installed correctly into hole.

Step 11: Install aFe housing assembly into vehicle.

Step 12: Install coupling with clamps over the throttle body. Do not tighten yet.



Figure E

Refer to Figure E for Steps 13-14

Step 13: Install grommet into hole in aFe tube then press the fitting in it.

Step 14: Remove the temperature sensor from the factory tube. Secure it into the fitting by turning clockwise.



Figure F

Refer to Figure F for Steps 15-17

Step 15: Install the tube into the vehicle by sliding it first into the filter then into the coupling.

Step 16: For 2011-2019 models connect the factory crank case hose to the aFe POWER tube, for 2020+ models connect the provided hose to the aFe Power tube and secure it on the engine side using the provided clamp.

Step 17: Align tube correctly, then tighten all clamps.



Figure G

Refer to Figure G for Steps 18-20

Step 18: Re-connect the temperature sensor.

Step 19: Re-install the factory bolt removed at step 2 to secure the housing.

Step 20: Re-install the engine cover.

Step 21: Make sure all clamps and connections are secured. Your installation is now complete.

Thank you for choosing aFe POWER!

PAGE LEFT BLANK INTENTIONALLY



advanced FLOW engineering, inc.

Corona, CA 92879

<https://afepower.com/contact>