

GT
MOMENTUM

advanced FLOW engineering

Cold Air Intake System

Instruction Manual P/N: 51-76005-R

Make: Toyota

Model: Tacoma

Year: 2016-2023

Engine: V6-3.5L



- Please read the entire instruction manual before proceeding.
- Ensure all components listed are present.
- For technical support please call 951-493-7185.
- Ensure you have all necessary tools before proceeding.
- Do not attempt to work on your vehicle when the engine is hot.
- Retain factory parts for future use.

Label	Qty.	Description	Part Number
A	1	Air Filter (Pro 5R)	21-91092
B	1	Tube	05-76005R1
C	1	Housing	05-76005R2
D	1	Scoop	05-76005R3
E	1	Coupling, Silicone Hump	05-01401
F	1	Coupling, Silicone Bellows Rdr (3x3-1/8)ID x 3"L	05-01400
G	1	Seal, Trim (15" in.)	05-00007
H	2	Clamp, #052	03-50008
J	2	Screw, Torx: M4x.7x8mm	03-50491

Installation will require the following tools:

8mm nut driver, 10mm deep socket & driver, 12mm deep socket & driver, 7/16" deep socket, flathead screwdriver, phillips screwdriver, T20 torx screwdriver, needle nose pliers.

Warranty Information available at <https://afepower.com/contact#warranty>

Emissions Disclaimer: This product is not currently CARB exempt and is not available for purchase in California or for use on any vehicle registered with the California Department of Motor Vehicles.

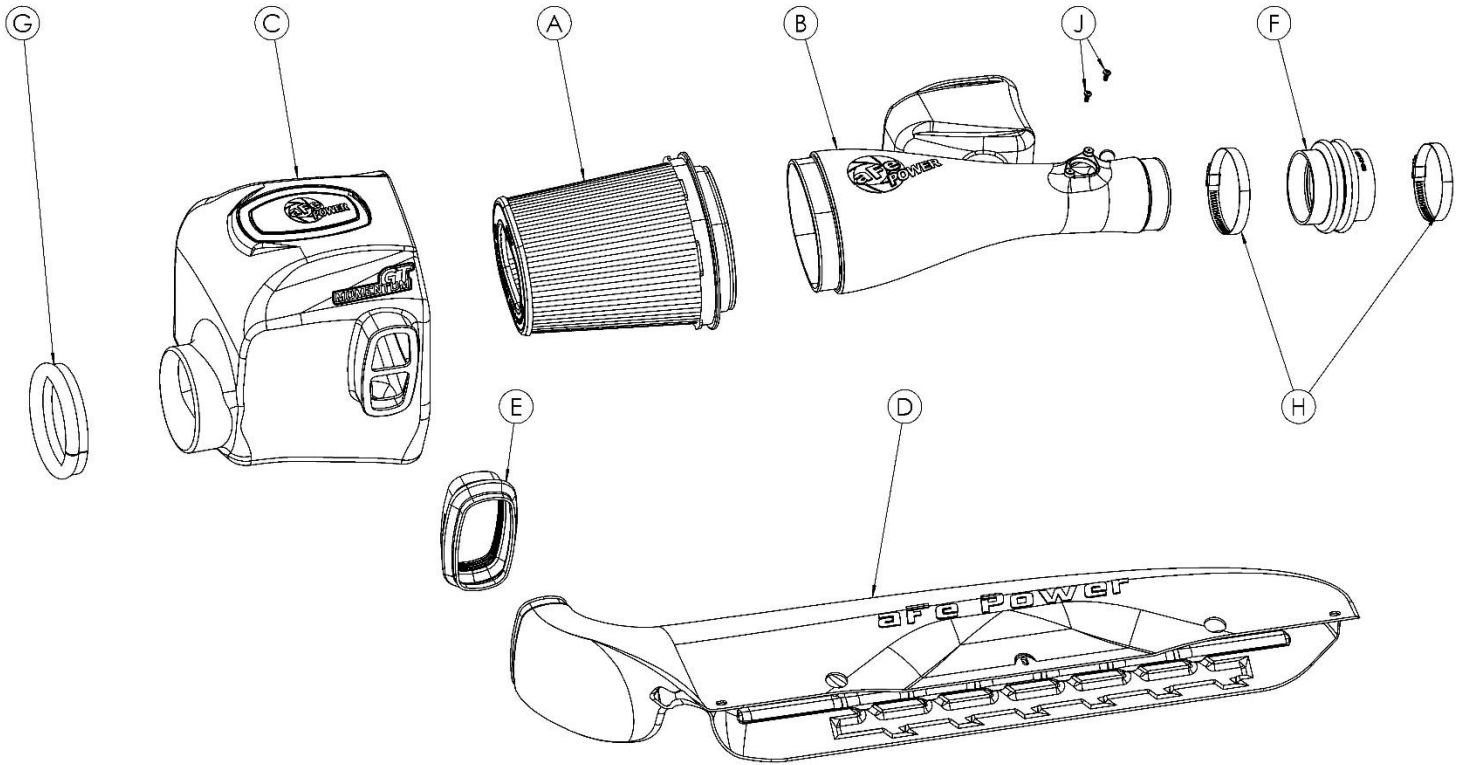




Figure A

Refer to Figure A for Step 1

Step 1: Remove your engine cover by lifting up and pulling the cover towards you.

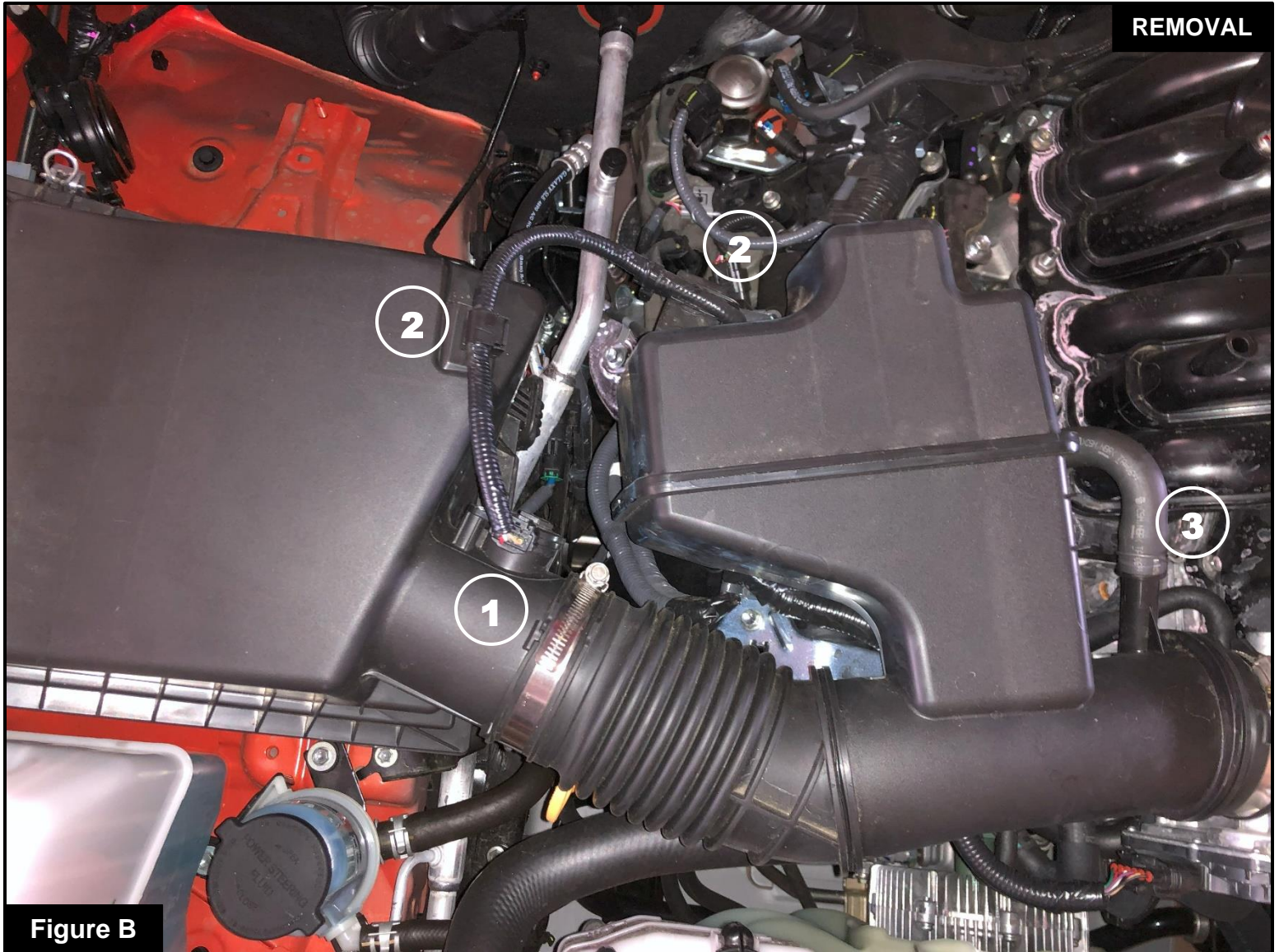


Figure B

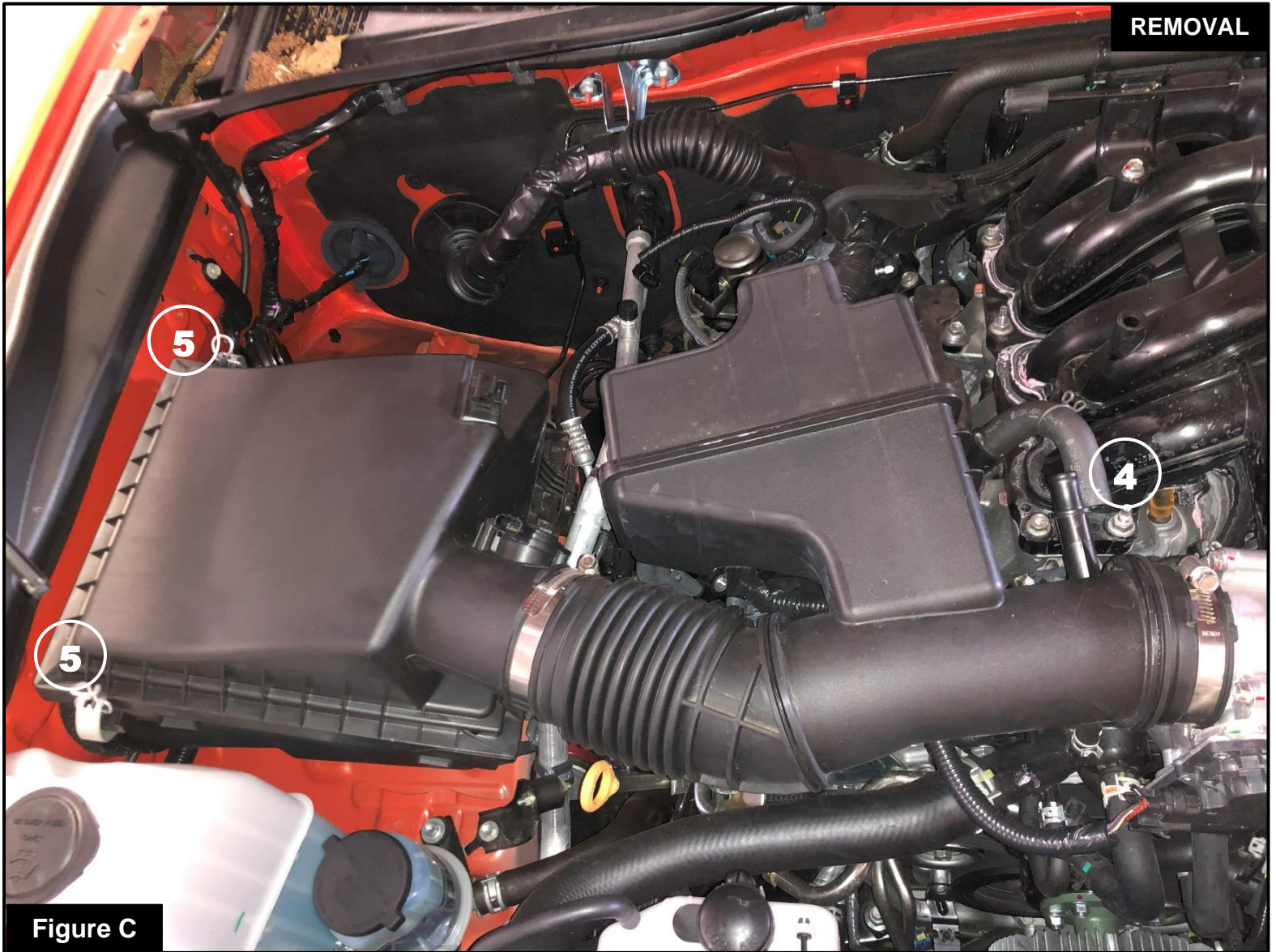
Refer to Figure B for Steps 2-4

Step 2: Disconnect the Mass Air Flow (MAF) harness (1) from the sensor in the factory tube.

Step 3: Disconnect the MAF wiring harness from both plastic clips (2).

Step 4: Disconnect the Crank Case Vent (CCV) hose (3) from the factory intake tube.

***Optional: save the factory spring clip for later use.**

**Figure C****Refer to Figure C for Steps 5-8**

Step 5: With a 10mm nut driver, loosen the hose clamp at the throttle body (4).

Step 6: Unclip both toggle clamps on the factory housing (5).

Step 7: Lift and remove the upper intake housing and intake tube.

Step 8: Remove the factory air filter.



Figure D

Refer to Figure D for Steps 9-10

Step 9: With a 12mm nut driver, loosen all three ⑥ bolts securing the lower housing in place.

Step 10: Lift and remove the lower half of the factory housing at this time.

**Figure E****Refer to Figure E for Step 11**

Step 11: Remove and transfer the three steel sleeves and three rubber isolation grommets to the Momentum housing (7).



Figure F

Refer to Figure F for Step 12

Step 12: Install the rubber trim seal on the round fender-side opening of the Momentum housing.

Note: Get one end seated on the housing first then slowly work all the way around, pressing it into the housing as you go.

**Figure G****Refer to Figure G for Step 13**

Step 13: Using a phillips head screwdriver, remove the MAF sensor ⑧ and transfer it to the Momentum intake tube. Secure the MAF sensor using the two provided T20 Torx screws.

**Figure H****Refer to Figure H for Steps 14-15**

Step 14: Before installing the Momentum housing, insert the two previously removed bolts into the rubber grommets from the inside and one on the outer mounting location.

Step 15: Lower the housing into the engine bay, align each bolt and then tighten. Be careful not to over tighten.

**Figure I****Refer to Figure I for Steps 16-17**

Step 16: Insert the filter into the housing as shown (9). Press until you feel or hear all 6 of the tabs seat themselves in the housing. Gently pull on the filter to verify that it is properly seated.

Step 17: Slide the coupling over the throttle body as shown, with the smaller end on the throttle body (10).

**Figure J****Refer to Figure J for Steps 18-21**

Step 18: Insert the tube into the air filter as shown then lower the other end into the coupling at the throttle body.

Step 19: Slip both provided hose clamps over the coupling as shown (11).

Step 20: Align the tube with the coupling and filter, then tighten both clamps at the throttle body with an 8mm nut driver.

Step 21: Tighten the T-bolt clamp on the filter securing it to the intake tube (12).



Figure K

Refer to Figure K for Steps 22-23

Step 22: Reconnect the CCV hose to the intake tube (13), followed by the factory spring clip.

Step 23: Reconnect the MAF sensor as shown (14).

Note: Continue reading to install the Dynamic Air Scoop included with this kit.

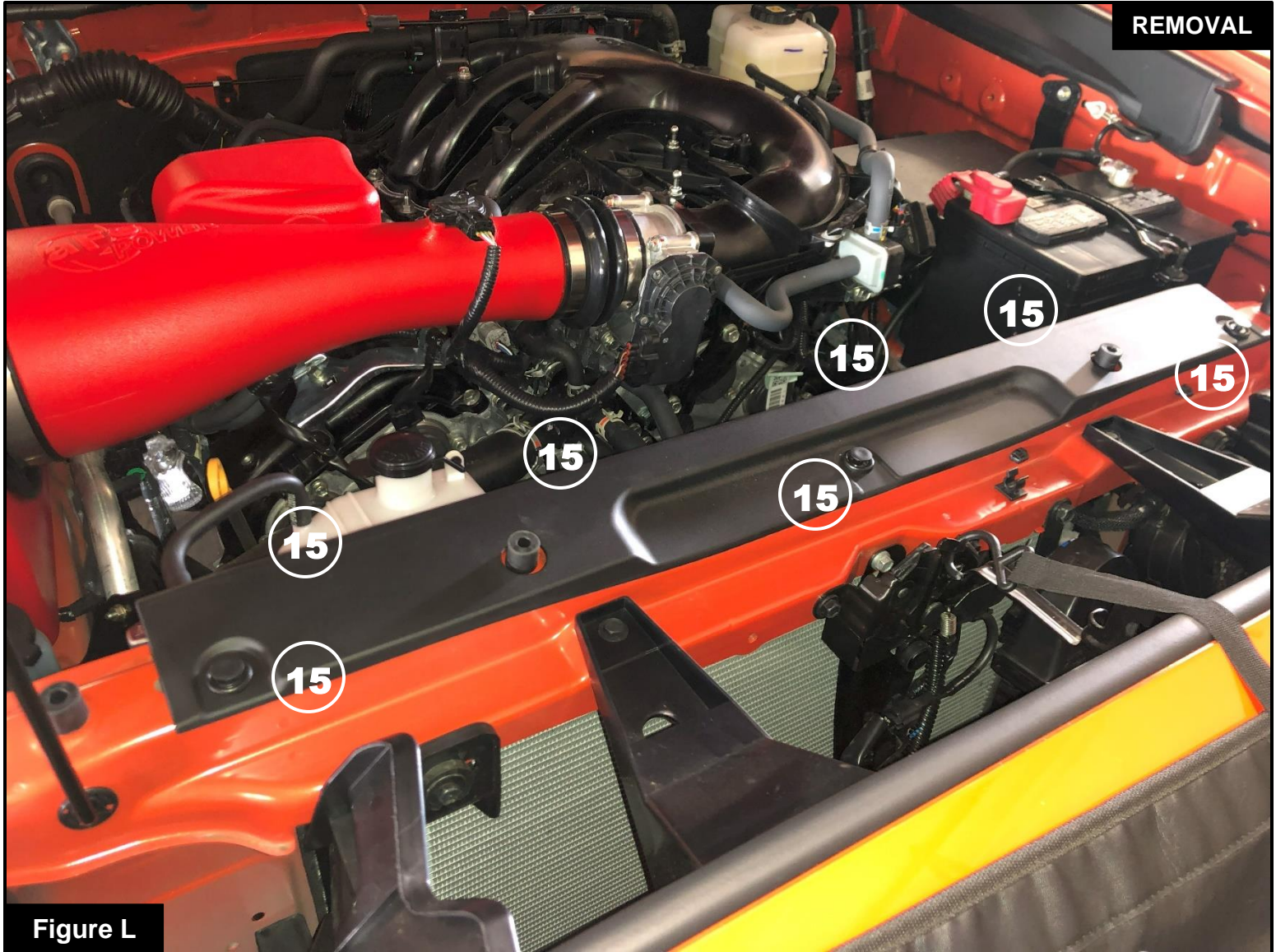


Figure L

Refer to Figure L for Step 24

Step 24: Gently remove the push clips (15) from the OE plastic radiator support panel. Do this by first pushing up the center pins, then pulling the the entire clip out. Repeat for all of the 7 clips.

Note: Be careful not to damage the clips as 3 of them will be reused.

**Figure M****Refer to Figure M for Steps 25-27**

Step 25: Lift and remove the OE plastic radiator support panel.

Step 26: With a flathead screwdriver, carefully press in on the side tabs, then push the black plastic clip (16) through the metal support.

Step 27: Slide the provided silicone coupling (17) over the aFe air box as shown. The side with the internal ribs should go over the air box.


Figure N

Refer to Figure N for Steps 28-33

- Step 28: Lower the scoop (passenger side first) into place over the OE plastic clip locations.
- Step 29: While lowering the scoop in place, slip the scoop into the open side of the coupling.
- Step 30: Locate the centermost slotted hole on the scoop and insert a push clip **18** at this time.
- Step 31: Align the scoop with the remaining two slotted holes and insert a push clip in each **19**.
- Step 32: Double check that the coupling is seated all the way around both the air box and the scoop.
- Step 33: Reinstall the engine cover. Your installation is now complete.

Note: Check that all bolts, clamps, and connectors are still secure after 200 miles.



Page left blank intentionally



Page left blank intentionally



advanced FLOW engineering, inc.

252 Granite Street Corona, CA 92879
TEL: 951.493.7100 • TECH: 951.493.7185
E-Mail: Tech@aFepower.com