

aFe Control Front Tow Hook Set Toyota A90 Supra

Product Number: 450-721001-B/G/L/R

Install Time: 10 Min. (Front Tow Hook),



Recommended Tools:

Sockets: 15mm, 1 inch

Socket Wrench

Small Extension

Front Tow Hook:

Removal of cap:

1. Push on arrow to pop out cap.
2. Remove cap once popped out
(Note: gently pull on hanger to fully remove cap)



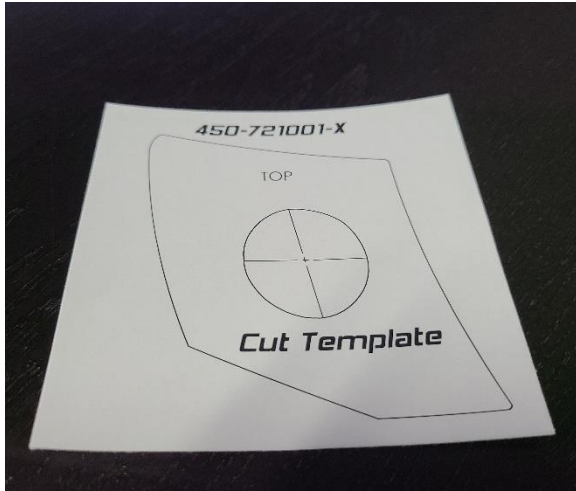
Installation of Tow Hook:

3. Thread in stem with 1-inch socket and fully tighten. *(note: Bolts are pre-coated with Vibratite Thread Locker)*



Optional Modification:

a) Cut out the provided template then place over your front tow hook cap.



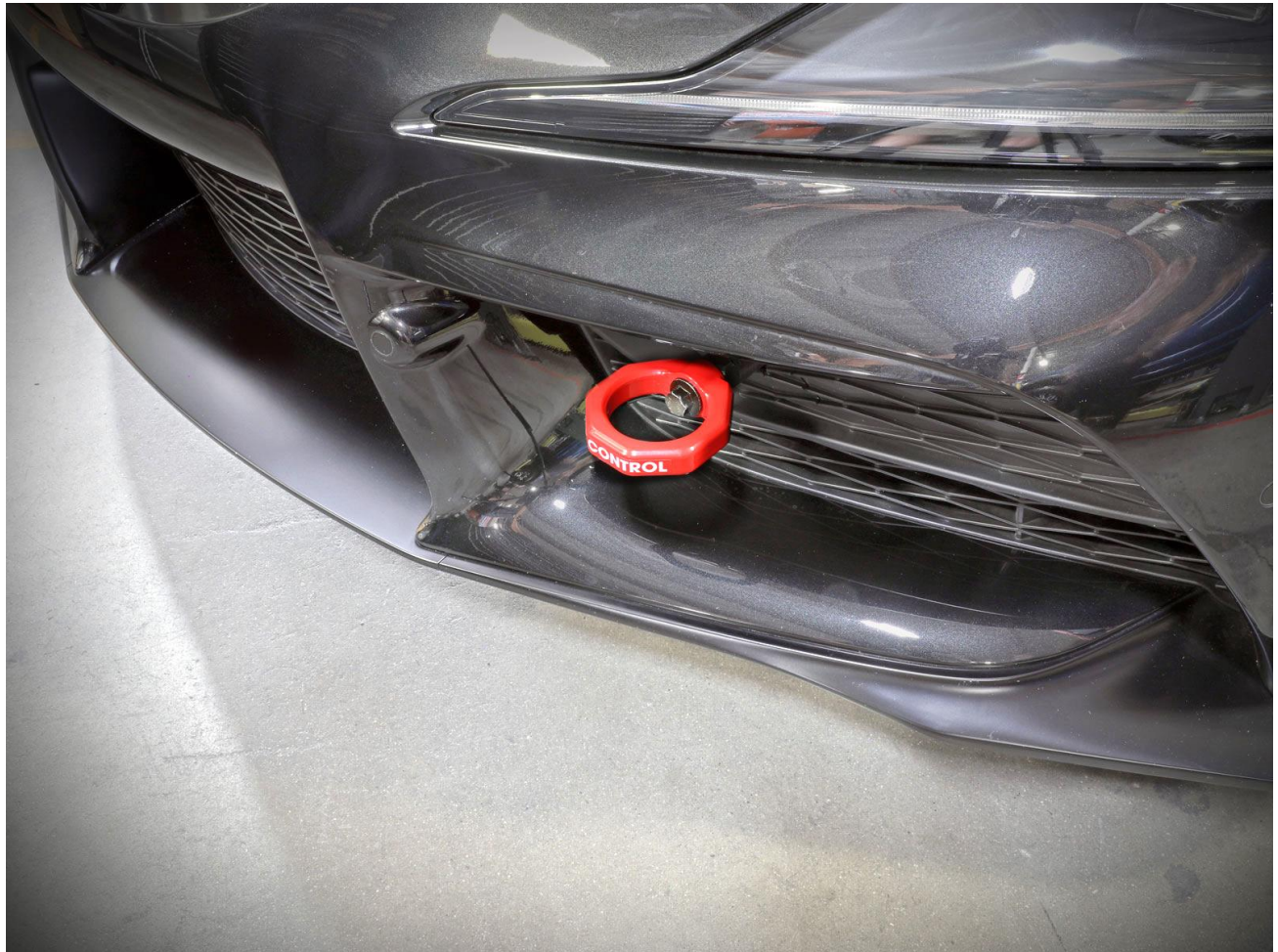
b) Outline the cut circle with a marker onto your front tow hook cap. After outline is drawn you should be ready to cut it out with a Dremel.



- c) If you decided to cut through front tow hook cap, trim hole cutout as needed to fit easily in place, clip cap back into the bumper once stem is installed.



4. Thread in hook to the stem with supplied bolt using a 15mm socket and firmly tighten it. You are finished with the front tow hook installation.



Page Left Intentionally Blank

Page Left Intentionally Blank

WMMIC
AFECONTROL

*232 Granite St.
Corona, CA 92879
aFepower.com*