

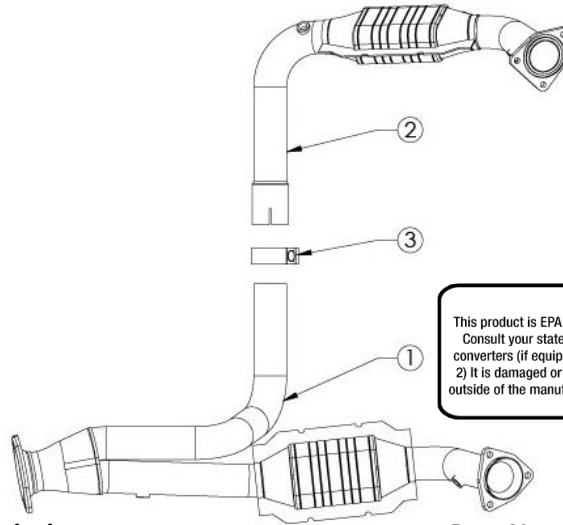


# INSTALLATION INSTRUCTIONS

Direct Fit Catalytic Converter

**MAKE:** Cadillac/Chevrolet/GMC  
**MODEL:** Gas Trucks/SUV's  
**YEAR:** 1999-2007  
**ENGINE:** V6-4.3L, V8-4.8L/5.3L/6.0L

47-44001



**EMISSIONS DISCLAIMER**  
This product is EPA compliant, not for sale or use on vehicles certified for the state of California. Consult your state or local authority for any additional clarification. Replacement of catalytic converters (if equipped) is allowed only under the following conditions: 1) It is missing or stolen; 2) It is damaged or lead poisoned as determined by a state or local inspection facility; or 3) It is outside of the manufacturers warranty period (consult your owner's manual), if none stated, 5 years or 50,000 miles.

Item	Description	Part Number	Quantity
1	PS Y-Pipe Assembly	05-244172	1
2	DS Y-Pipe Assembly	05-244173	1
3	Clamp, Band: 2-1/2"	05-41061	1

**aFe POWER recommends professional installation on this product.** Thoroughly inspect the aFe POWER exhaust system to make sure there is no damage from shipping (if damage is noted, immediately contact aFe POWER customer service). Allow time for your vehicle to cool down prior to installation. When working on your vehicle proceed with caution. Wear protective safety equipment; eye goggles and gloves to ensure a safe installation.

Install band clamps to proper torque specifications of 40-45 ft-lb.





## INSTALLATION INSTRUCTIONS

Direct Fit Catalytic Converter

**MAKE:** Cadillac/Chevrolet/GMC  
**MODEL:** Gas Trucks/SUV's  
**YEAR:** 1999-2007  
**ENGINE:** V6-4.3L, V8-4.8L/5.3L/6.0L

47-44001

1. **(Read instructions prior to installation.)** It is recommended to not fully tighten the exhaust until it has been fully installed. Leave loose for adjustability.
2. Secure vehicle on jack stands (refer to your manual for specified jack stand positions).
3. For faster installation, spread out the parts of the exhaust alongside your vehicle as shown in the diagram above.
4. Secure the stock exhaust with jack/stands.
5. If applicable to vehicle remove oxygen sensor clips from frame.
6. Disconnect oxygen sensor electrical connectors.
7. Remove Oxygen sensors from OE Catalytic converter.
8. Remove the (x3) nuts from the passenger side exhaust manifold.
9. Remove the (x3) nuts from the driver side exhaust manifold.
10. Remove the (x2) nuts from the exhaust muffler.
11. Support Transmission with a transmission jack.
12. Remove transmission support crossmember.
13. Remove the OE Catalytic Converter.
14. Install the aFe Power Passenger Side Y-Pipe.
15. Install the aFe Power Driver Side Y-Pipe onto the aFe Power Passenger Side Y-Pipe using the provided 2.5" band clamp.
16. Install the transmission support crossmember and tighten bolts to 95 N•m (70 lb ft)
17. Install oxygen sensors.
18. Connect oxygen sensor connectors and install clip to frame if applicable to vehicle.
19. Ensure that all the components of the aFe POWER exhaust system are aligned and are at a safe clearance from all wires, hoses, brake lines, body parts, and tires.
20. Start from the front of the aFe exhaust system and evenly tighten all clamps and fasteners.
21. Start the vehicle and check for any leaks. If any leaks are found, determine cause and repair as necessary.
22. Remove vehicle from jacks stands.
23. It is recommended to re-tighten all clamps and hardware after 50-100 miles.