



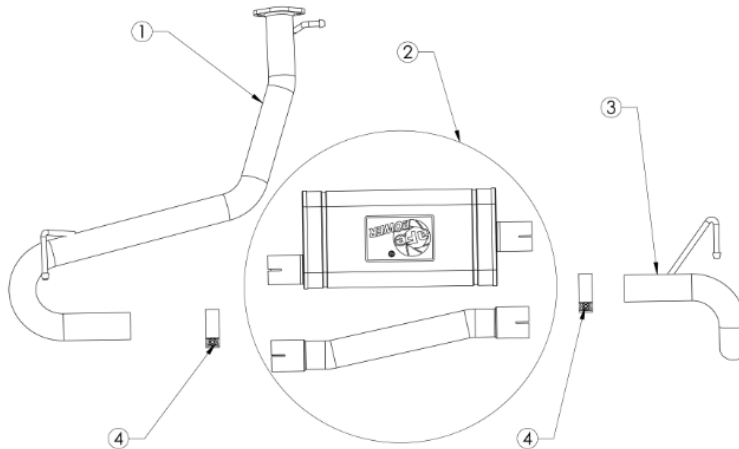
INSTALLATION INSTRUCTIONS

Axle-Back Exhaust

MAKE: Hyundai
MODEL: Kona
YEAR: 2018-2023
ENGINE: L4-1.6L(t)

49-37017
49-37017NM

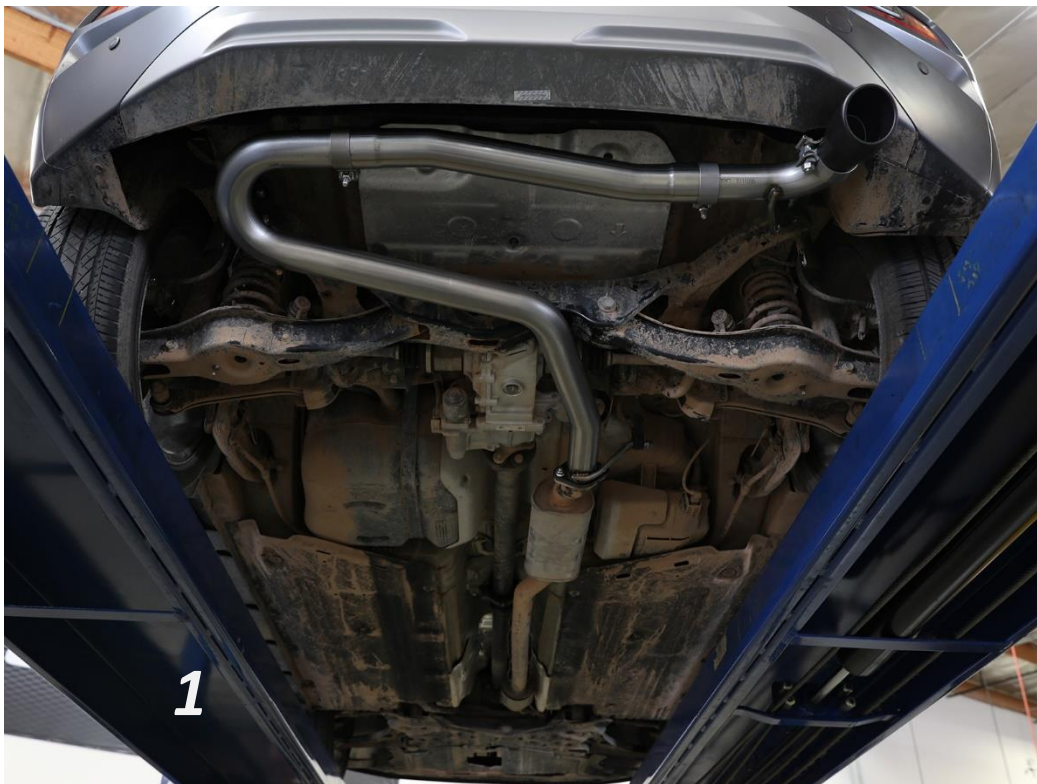
NOTE: AWD Only



Item	Description	Part Number	Quantity
1	S/A Muffler Inlet	05-245027	1
2	S/A Muffler (49-37017 Only)	05-245028	1
2	Muffler Delete (49-37017NM Only)	05-245030	1
3	S/A Tail Pipe	05-245029	1
4	Clamp, Band: 2-1/2"	05-41061	2

aFe POWER recommends professional installation on this product. Thoroughly inspect the aFe POWER exhaust system to make sure there is no damage from shipping (if damage is noted, immediately contact aFe POWER customer service). Allow time for your vehicle to cool down prior to installation. When working on your vehicle proceed with caution. Wear protective safety equipment; eye goggles and gloves to ensure a safe installation.

Install band clamps to proper torque specifications of 40-45 ft-lb.





INSTALLATION INSTRUCTIONS

MAKE: Hyundai
MODEL: Kona
YEAR: 2018-2022
ENGINE: L4-1.6L(t)

Axle-Back Exhaust

49-37017
49-37017NM

NOTE: AWD Only

1. **(Read instructions prior to installation.)** It is recommended to not fully tighten the exhaust until it has been fully installed. Leave loose for adjustability.
2. Secure vehicle on jack stands (refer to your manual for specified jack stand positions).
3. For faster installation, spread out the parts of the exhaust alongside your vehicle as shown in the diagram above.
4. Secure the stock exhaust with jack/stands.
5. Remove the O.E axle-back.
6. Install the new aFe POWER axle-back using the provided 2.5" band clamps. Then slide the hangers into the O.E isolation mounts.
7. Install the aFe POWER muffler or muffler delete.
8. Install the aFe POWER tail pipe and slide the hangers into the O.E. isolation mount.
9. If applicable, install the aFe POWER tips using the provided 2.5" band clamps.
10. Adjust the tips to the desired position and tighten.
11. Ensure that all the components of the aFe POWER exhaust system are aligned and are at a safe clearance from all wires, hoses, brake lines, body parts, and tires.
12. Start from the front of the aFe exhaust system and evenly tighten all clamps and fasteners.
13. Start the vehicle and check for any leaks. If any leaks are found, determine cause and repair as necessary.
14. Remove vehicle from jacks stands.
15. It is recommended to re-tighten all clamps and hardware after 50-100 miles.