



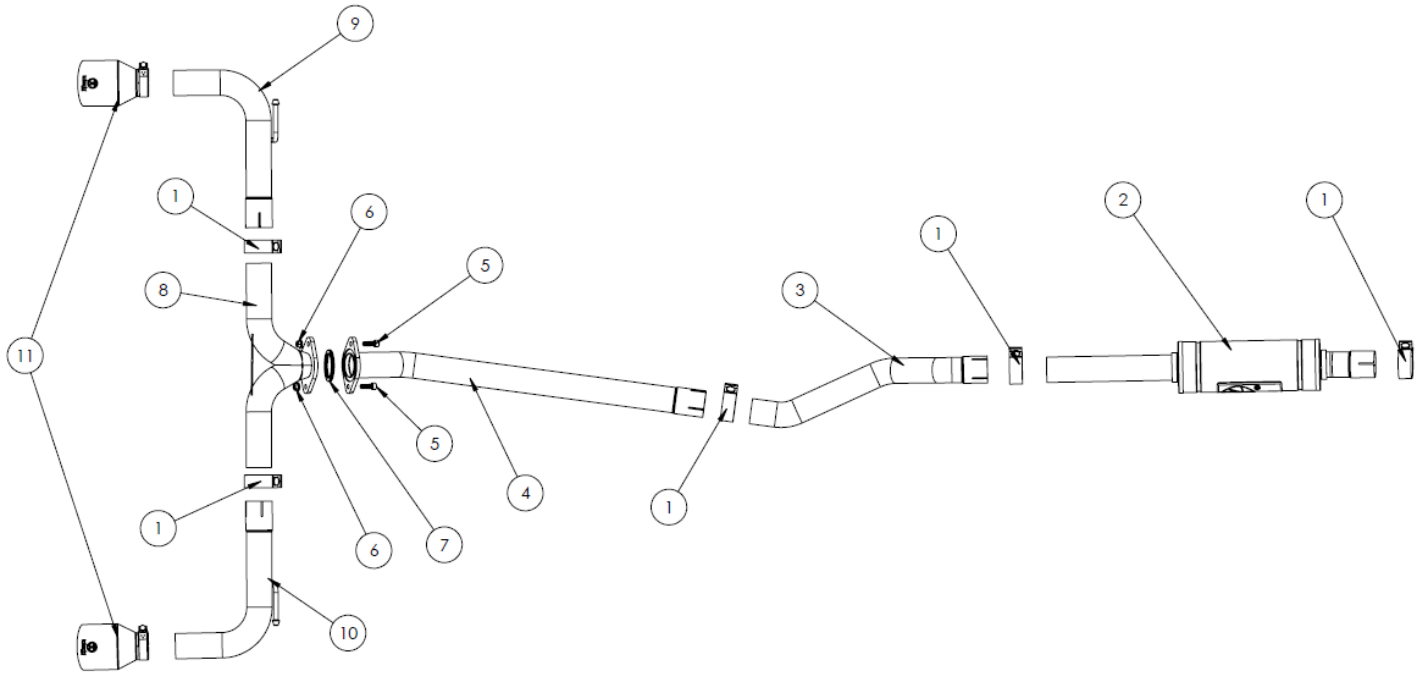
# INSTALLATION INSTRUCTIONS

**MAKE:** Mazda  
**MODEL:** 3  
**YEAR:** 2014-2018  
**ENGINE:** L4-2.0/2.5L

## Cat-Back Exhaust

49-37015-P  
 49-37015-B  
 49-37015-L  
 49-37015-C

**NOTE: Cutting necessary**



Item	Description	Part Number	Quantity
1	2-1/2" Band Clamp	05-41061	5
2	Muffler Assembly	05-145984	1
3	Mid-pipe 1	05-145985	1
4	Mid-pipe 2	05-145986	1
5	M10 Flange Hd Cap Screw	03-50493	2
6	M10 Flange Nut	03-50189	2
7	Gasket	05-46420	1
8	Y-pipe Assembly	05-145987	1
9	Driver Side Tailpipe	05-145988	1
10	Passenger Side Tailpipe	05-145989	1
11	Clamp-on Polished Tip	49T25454-P07	2
11	Clamp-on Black Tip	49T25454-B07	2
11	Clamp-on Blue Flame Tip	49T25454-L07	2
11	Clamp-on Carbon Tip	49T25454-C07	2

aFe POWER recommends professional installation on this product. Thoroughly inspect the aFe POWER exhaust system to make sure there is no damage from shipping (if damage is noted, immediately contact aFe POWER customer service). Allow time for your vehicle to cool down prior to installation. When working on your vehicle proceed with caution. Wear protective safety equipment; eye goggles and gloves to ensure a safe installation.

Install band clamps to proper torque specifications of 40-45 ft-lb.



## INSTALLATION INSTRUCTIONS

**MAKE:** Mazda  
**MODEL:** 3  
**YEAR:** 2014-2018  
**ENGINE:** L4-2.0/2.5L

**Cat-Back Exhaust**

49-37015-P  
49-37015-B  
49-37015-L  
49-37015-C

**NOTE: Cutting necessary**



1. **(Read instructions prior to installation.)** It is recommended to not fully tighten the exhaust until it has been fully installed. Leave loose for adjustability.
2. Secure vehicle on jack stands (refer to your manual for specified jack stand positions).
3. For faster installation, spread out the parts of the exhaust alongside your vehicle as shown in the diagram above.
4. Secure the stock exhaust with jack/stands.
5. Remove the first large center brace by loosening the (x6) 12mm bolts and (x2) 10mm bolts securing the center brace to the frame.
6. Remove the second center brace by loosening the (x6) 12mm bolts securing the center brace to the frame.
7. Remove the OE muffler assembly by loosening the (x2) 14mm nuts securing the muffler assembly to the OE mid-pipe and pry out the (x4) hanger rods out of the isolation mounts.
8. Unplug the O2 sensor from the harness located underneath the rear splash guard and remove the clip securing the O2 sensor to the frame. Retain O2 sensor, it will be reused.
9. Remove the OE mid-pipe by loosening the (x2) 14mm nuts securing the OE mid-pipe to the OE exhaust manifold and pry out the (x2) hanger rods from the isolation mounts.
10. Secure the OE mid-pipe in a vice and mark 2.5" inches away from the hanger rods located next to the catalytic converter. **See reference image 1.**
11. Using a hacksaw or a reciprocating saw cut along the marked line and deburr the ends of the tube.
12. Install the OE mid-pipe once cut using the OE (x2) 14mm nuts.
13. Install the Takeda Muffler Assembly using the supplied 2-1/2" band clamp.
14. Install the Takeda Mid-pipe 1 using the supplied 2-1/2" band clamp.
15. Install the Takeda Mid-pipe 2 using the supplied 2-1/2" band clamp and re-use the OE crush style gasket.
16. Install the Takeda Y-Pipe Assembly using the provided (x2) M10 Cap Screw, (x2) M10 Flange Nut, and (x1) gasket.
17. Install the Takeda Driver and Passenger Tail-Pipes to the Y-pipe Assembly by sliding the hangers into the OE rubber isolation mounts and using the supplied 2-1/2" band clamps.
18. Install driver and passenger side Clamp-On Tips using supplied band clamps.
19. Reinstall O2 Sensor and reconnect to harness.
20. Ensure that all the components of the Takeda exhaust system are aligned and are at a safe clearance from all wires, hoses, brake lines, body parts, and tires.
21. Start from the front of the Takeda exhaust system and evenly tighten all clamps and fasteners.
22. Start the vehicle and check for any leaks. If any leaks are found, determine cause and repair as necessary.
23. Remove vehicle from jacks stands.
24. It is recommended to re-tighten all clamps and hardware after 50-100 miles.