

advanced FLOW engineering

Dynamic Air Scoop D.A.S.

Instruction Manual P/N: 54-13032S/ 54-13032SL/ 54-13032SR/ 54-13032SN/ 54-13032SE

Make: **BMW**

Model: **M3 (F80)**

Year: **2015-2018**

Engine: **L6-3.0L(tt) S55**

Make: **BMW**

Model: **M4 (F82/83)**

Year: **2015-2020**

Engine: **L6-3.0L(tt) S55**



- Please read the entire instruction manual before proceeding.
- Ensure all components listed are present.
- If you are missing any of the components, call customer support at 951-493-7185.
- Ensure you have all necessary tools before proceeding.
- Do not attempt to work on your vehicle when the engine is hot.
- Retain factory parts for future use.

Label	Qty.	Description	Part Number
A1	1	Scoop, Passenger Side (Black)	05-5413032B4
B1	1	Scoop, Driver Side (Black)	05-5413032B5
A2	1	Scoop, Passenger Side (Red)	05-5413032R4
B2	1	Scoop, Driver Side (Red)	05-5413032R5
A3	1	Scoop, Passenger Side (Blue)	05-5413032L4
B3	1	Scoop, Driver Side (Blue)	05-5413032L5
A4	1	Scoop, Passenger Side (Orange)	05-5413032N4
B4	1	Scoop, Driver Side (Orange)	05-5413032N5
A5	1	Scoop, Passenger Side (Neon Green)	05-5413032E4
B5	1	Scoop, Driver Side (Neon Green)	05-5413032E5
C	2	Push-In Rivets	05-01407

Installation will require the following tools:

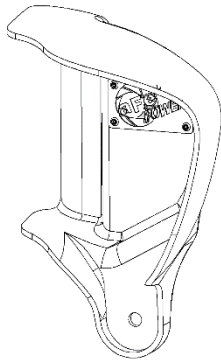
Hook Tool, flashlight.

Warranty Information available at: <https://afepower.com/contact#warranty>

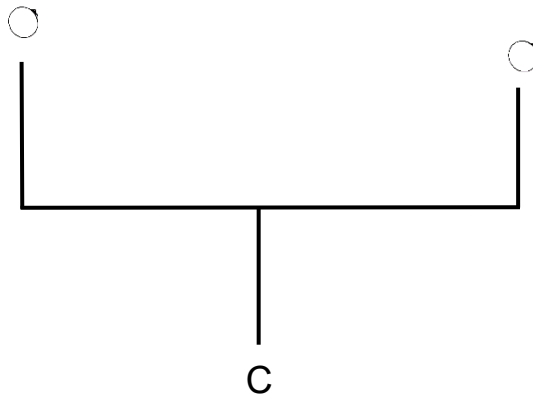
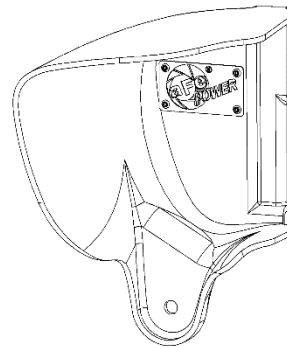
Emissions Disclaimer:

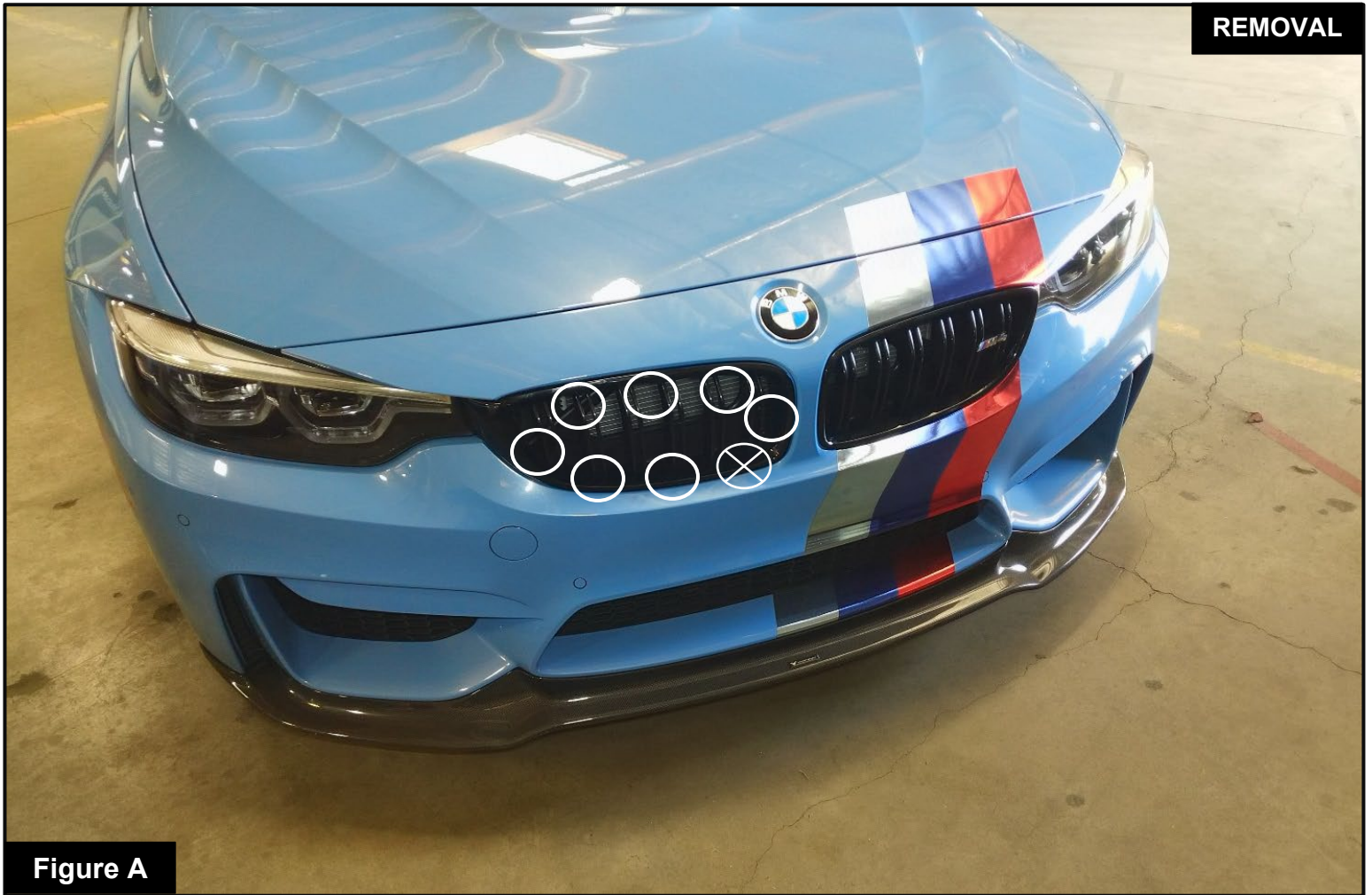
This product is not currently CARB exempt and is not available for purchase in California or for use on any vehicle registered with the California Department of Motor Vehicles.


A1/A2/A3/A4/A5

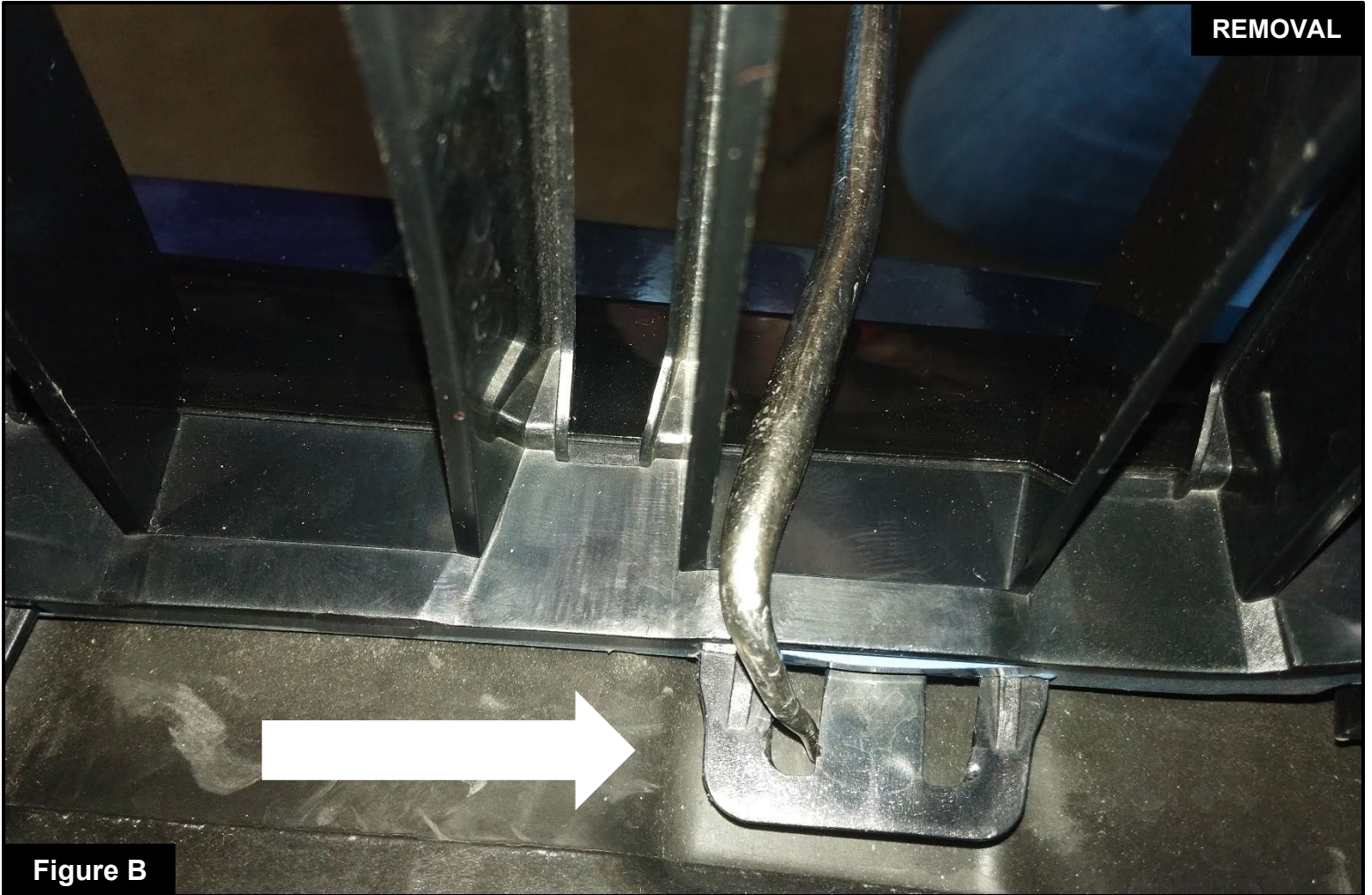


B1/B2/B3/B4/B5



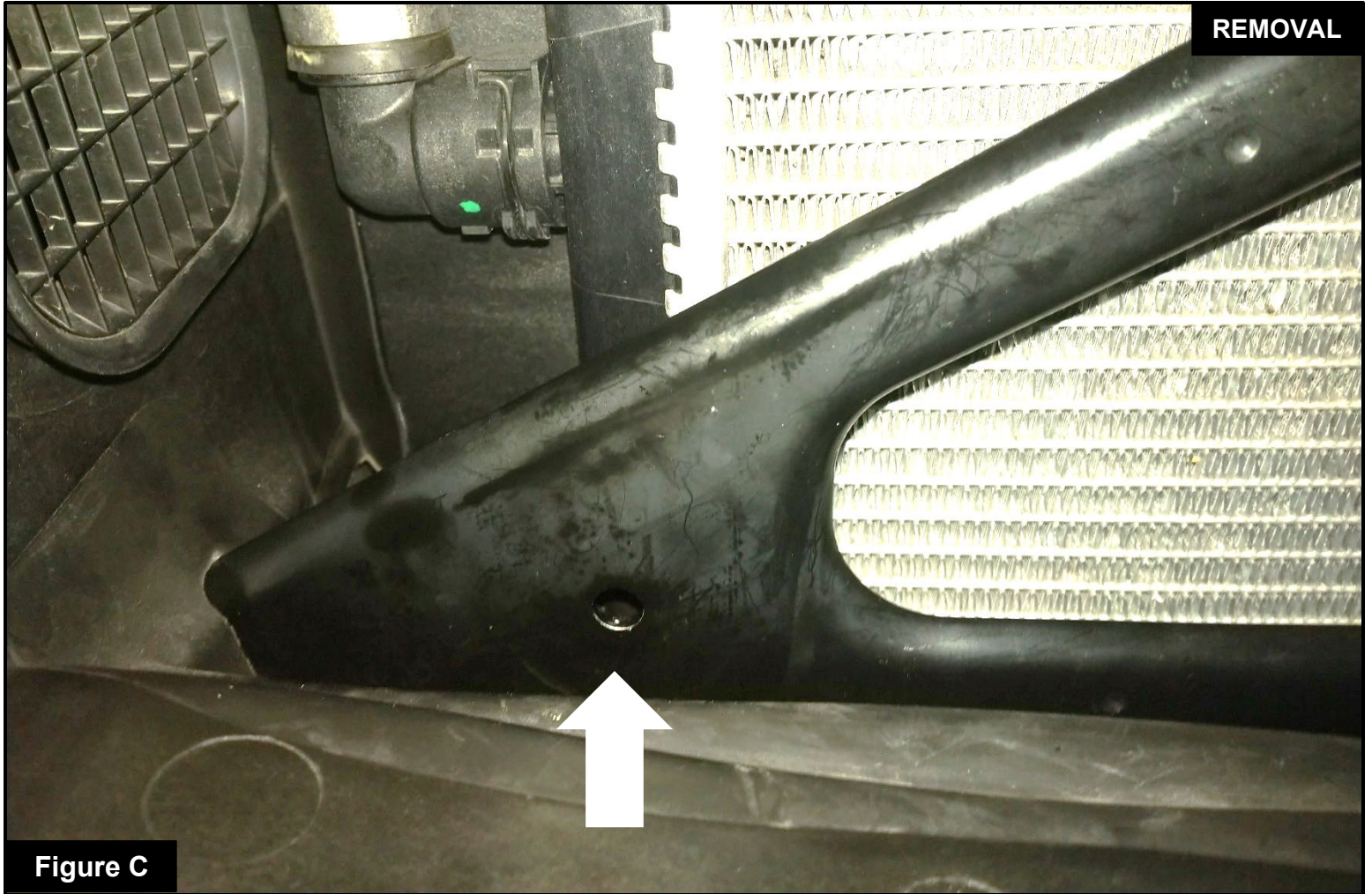
**Figure A****Refer to Figure A for Step 1**

Step 1: Locate the 8 clips that retain the kidney bean grilles on each side. It is recommended to start on the lower, innermost clip .

**Figure B****Refer to Figure B for Steps 2-3**

Step 2: Using a hook tool, gently pry on the middle of the tab while also gently pulling on the kidney bean slats in the grille. Repeat this process for all 8 tabs the grille. A flashlight may help with this step.

Step 3: Repeat This process for the driver side grille.



Refer to Figure C for Step 4

Step 4: Locate the mounting hole that will be used in the factory support bar.

**Figure D****Refer to Figure D for Step 5**

Step 5: Install the passenger side aFe POWER air scoop over the support bar by lining up the rivet hole with the strut bar hole and installing the provided push rivets. Make sure the push rivets are securely fastened and pressed all the way in.



Figure E

Refer to Figure E for Step 6

Step 6: Install the driver side scoop the same way.

**Figure F****Refer to Figure F for Step 7-8**

Step 7: Make sure the scoops are correctly secured, then re-install the factory grilles.

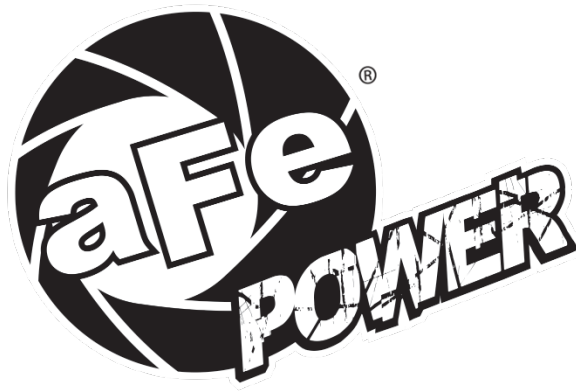
Step 8: Your installation is now complete. Thanks for choosing aFe POWER.



Page left blank intentionally



Page left blank intentionally



advanced FLOW engineering, inc.

252 Granite Street Corona, CA 92879

<https://afepower.com/contact>