

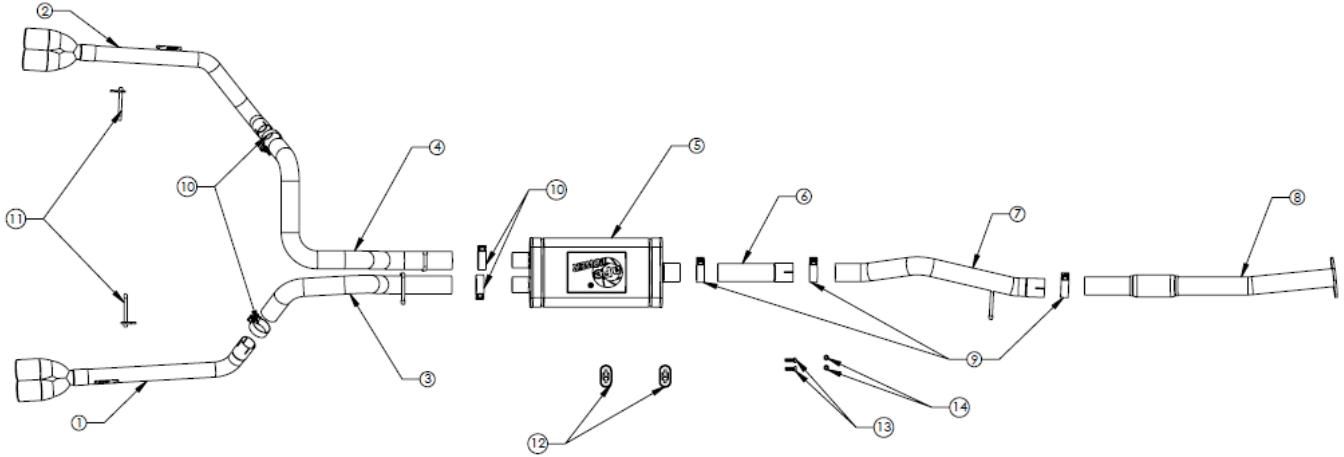


INSTALLATION INSTRUCTIONS

Vulcan Series Cat-Back Exhaust

MAKE: Chevy/GMC
MODEL: Silverado/Sierra
YEAR: 2019-2023
ENGINE: L4-2.7L (t)

49-34110-B
 49-34110-P



Item	Description	Part Number	Quantity
1	S/A Tube, Tail Pipe Passenger	05-145648B	1
1	S/A Tube, Tail Pipe Passenger	05-145648P	1
2	S/A Tube, Tail Pipe Driver	05-145647B	1
2	S/A Tube Tail Pipe Driver	05-145647P	1
3	S/A Tube, Over Axle Passenger	05-145646	1
4	S/A Tube, Over Axle Driver	05-145645	1
5	EXH Muffler 409SS: 3"-2.5"	49M00014	1
6	Tube, Extension Pipe	05-145644	1
7	S/A Tube, Mid-Pipe	05-145643	1
8	S/A Tube, Front Pipe	05-145800	1
9	Clamp, Band 3"	05-41055	3
10	Clamp, Band 2.5"	05-41061	4
11	Hanger Bracket	05-46374	2
12	Exhaust Isolation Mount	05-46050	2
13	Screw, Cap: 1/2-13 x 1-1/2	03-50464	2
14	Nut, Hex: 1/2-13, Gr.5	03-50441	2

aFe POWER recommends professional installation on this product. Thoroughly inspect the aFe POWER exhaust system to make sure there is no damage from shipping (if damage is noted, immediately contact aFe POWER customer service). Allow time for your vehicle to cool down prior to installation. When working on your vehicle proceed with caution. Wear protective safety equipment; eye goggles and gloves to ensure a safe installation.

Install band clamps to proper torque specifications of 40-45 ft-lb.





INSTALLATION INSTRUCTIONS

Vulcan Series Cat-Back Exhaust

MAKE: Chevy/GMC
MODEL: Silverado/Sierra
YEAR: 2019-2022
ENGINE: L4-2.7L (t)

49-34110-B
49-34110-P

1. **(Read instructions prior to installation.)** It is recommended to not fully tighten the exhaust until it has been fully installed. Leave loose for adjustability.
2. Secure vehicle on jack stands (refer to your manual for specified jack stand positions).
3. For faster installation, spread out the parts of the exhaust alongside your vehicle as shown in the diagram above.
4. Secure the stock exhaust with jack/stands.
5. This system will require cutting to remove the O.E exhaust system.
6. Using a marker, scribe a line where indicated in the photo. (FIG. 3)
7. Using a reciprocating saw, cut the exhaust where marked.
8. Now you may remove the rear half of the O.E exhaust.
9. Remove the front Half of the O.E exhaust up to the flanged joint.
10. Install the aFe power front pipe using the O.E. nuts.
11. Install the mid-pipe onto the front pipe using the provided band clamp and O.E. isolation mount.
12. Install the extension pipe using the provided band clamp. Only install the extension pipe for the CC/SB 156" wheelbase. Do not use extension pipe for the CC/SB or the DC/SB 147" wheelbase.
13. Install the Passenger's side over-axle pipe using the provided band clamp and O.E. isolation mounts.
14. Install the Driver's side over-axle pipe using the provided band clamp and O.E. isolation mounts.
15. Install the Passenger's side tail pipe with tip using the provided band clamp, hanger bracket, hardware and isolation mount. To mount the hanger bracket, refer to photo A.
16. Install the Driver's side tail pipe with tip using the provided band clamp, hanger bracket, hardware, and isolation mount. To mount the hanger bracket, refer to photo A.
17. Ensure that all the components of the aFe POWER exhaust system are aligned and are at a safe clearance from all wires, hoses, brake lines, body parts, and tires.
18. Start from the front of the aFe exhaust system and evenly tighten all clamps and fasteners.
19. Start the vehicle and check for any leaks. If any leaks are found, determine cause and repair as necessary.
20. Remove vehicle from jacks stands.
21. It is recommended to re-tighten all clamps and hardware after 50-100 miles.

