

## advanced FLOW engineering

Black Series Momentum Carbon Fiber Cold Air Intake System

**Instruction Manual** P/N: 51-76305-CF / 54-76305-CF

Make: **BMW** Model: **M3 (F80)**

Year: **2015-2018**

Engine: **L6-3.0L (tt) S55**

Make: **BMW** Model: **M4 (F82/F83)**

Year: **2015-2020**

Engine: **L6-3.0L (tt) S55**

Make: **BMW** Model: **M2 (F87)**

Year: **2019-2021**

Engine: **L6-3.0L (tt) S55**



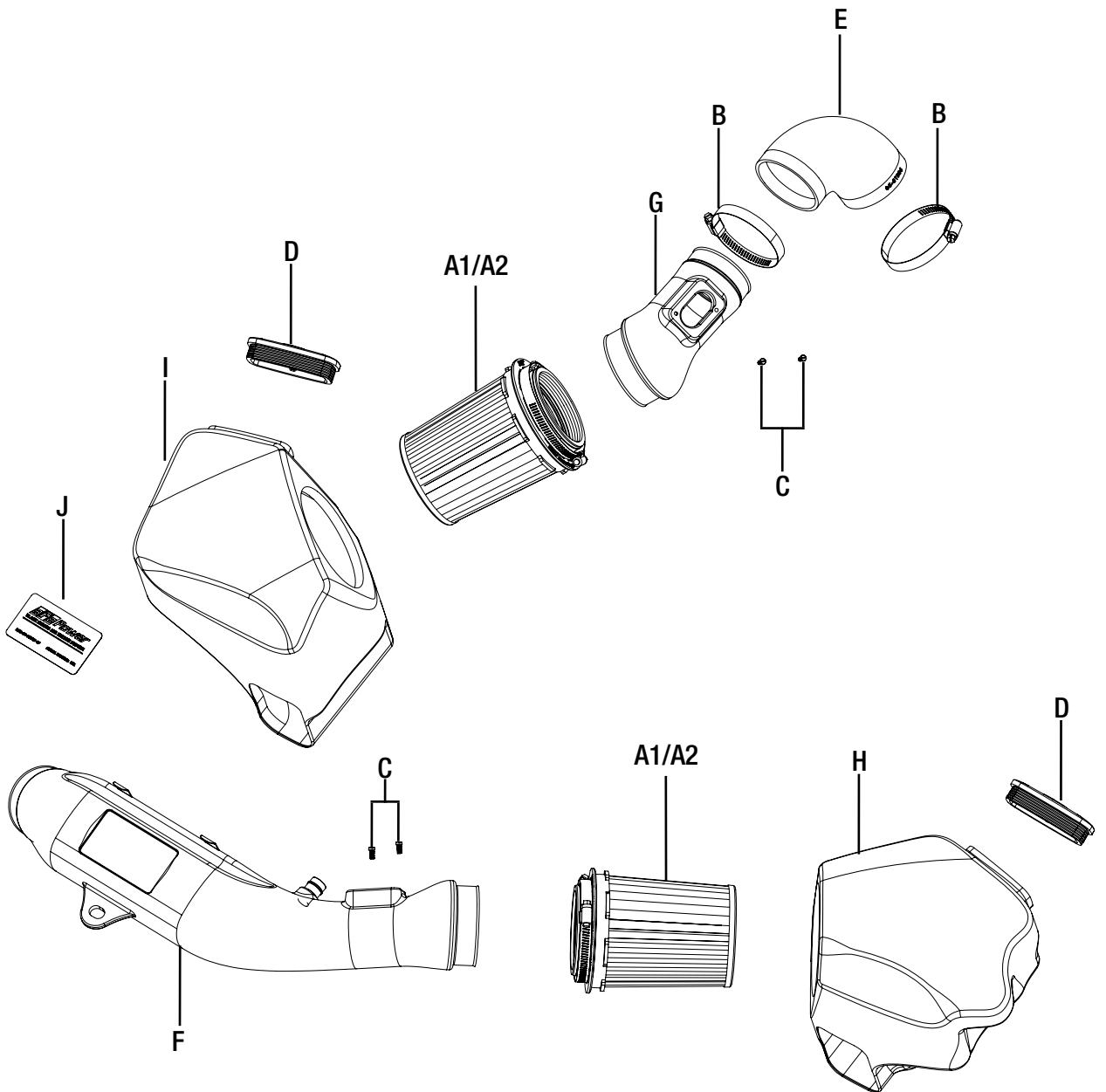
- Please read the entire instruction manual before proceeding.
- Ensure all components listed are present.
- If you are missing any of the components, call customer support at 951-493-7100.
- Ensure you have all necessary tools before proceeding.
- Do not attempt to work on your vehicle when the engine is hot.
- Disconnect the negative battery terminal before proceeding.
- Retain factory parts for future use.

Label	Qty.	Description	Part Number
A1	2	Air Filter (Pro DRY S)	21-91097
A2	2	Air Filter (Pro 5R)	24-91097
B	2	Clamp, #048	03-50007
C	4	Screw, Torx: M4	03-50490
D	2	Plug, Urethane	05-01225
E	1	Coupling, Silicone Elbow	05-01334
F	1	Tube, Driver Side	05-76305C1
G	1	Tube, Passenger Side	05-76305C2
H	1	Housing, Driver Side	05-76305C3
I	1	Housing, Passenger Side	05-76305C4
J	1	Emblem	06-00154

Tools needed: 7mm, 8mm Nut driver, 10mm Nut Driver, 1/4" Ratchet, 10mm, 13mm Socket, Flathead Screw Driver, Pliers.

**Warranty Information available at: <https://afepower.com/contact#warranty>**

Note: Legal in California for use on race vehicles only. The use of this device on vehicles used on public streets or highways is strictly prohibited in California and others states that have adopted California emission regulations.



**Figure A****Refer to Figure A for Steps 1-3**

Step 1: Remove the push clip (1) on the driver and passenger side windshield cover.

Step 2: Unlock the three 10mm plastic nuts (2) retaining the windshield covers on the driver and passenger side.

Step 3: Remove the windshield covers (3) on the driver and passenger side.



Figure B

**Refer to Figure B for Steps 4-5**

Step 4: Remove the 8 bolts (4) securing the carbon fiber strut brace. Remove 10mm bolt (5) securing strut bar to reservoir.

Step 5: Remove the carbon fiber front strut brace.





Figure C

**Refer to Figure C for Steps 6-8**

Step 6: Disconnect the MAF sensor (6) on driver side intake tube.

Step 7: Disconnect vacuum line (7) and unclip coolant hose routed on top of intake tube.

Step 8: Loosen clamp at turbo and unclip tube from front mounting bracket, then pull the full driver side intake system out of the vehicle. Remove the small rubber gasket (8) on the front mounting bracket.

**Figure D****Refer to Figure D for Steps 9-11**

Step 9: Disconnect the MAF sensor (9) on the passenger side airbox.

Step 10: Loosen the clamp between the air box and the 90 degrees tube. Pull the airbox out of the vehicle.

Step 11: Loosen the clamp between the 90 degrees tube and the turbo inlet tube. Remove the 90 degrees tube out of the vehicle.



Figure E

**Refer to Figure E for Steps 12-14**

- Step 12: Slide the filters inside the aFe housings until they lock in place. Install clamps on filter ends but do not tighten at this time.
- Step 13: Install driver side aFe housing into the vehicle. Push it firmly into the factory mounting grommets.
- Step 14: Transfer factory mounting grommet ⑩ from bottom of passenger side factory housing to the bottom of the aFe housing. Install the passenger side housing onto the vehicle. Orient the mounting grommet at the bottom correctly to make sure it secures over the sheet metal. Then push the housing firmly into the other factory mounting grommet.





Figure F

**Refer to Figure F for Steps 15-16**

Step 15: Transfer driver side MAF sensor from the factory airbox to the long aFe tube. Secure it with the furnished M4 screws.

Step 16: Install the aFePower black series emblem on the tube in the recess location for it.

**Figure G****Refer to Figure G for Steps 17-20**

- Step 17: Install the driver aFe tube in the vehicle. Slide the tube end into the factory turbo inlet tube then the other end into the filter.
- Step 18: Clip the aFe tube to the factory mounting bracket at the front of the car. Align tube correctly then tighten clamps on both ends.
- Step 19: Reconnect the vacuum line to the aluminum fitting. Reconnect the MAF sensor harness.
- Step 20: Carefully secure the coolant hose onto the aFe tube, by pressing it into the tabs.

**Figure H****Refer to Figure H for Steps 21-24**

Step 21: Transfer the passenger side MAF sensor to the short aFe tube.

Step 22: Install the 90 degrees furnished coupling over turbo inlet tube. Install clamps, but to do tighten at this time.

Step 23: Install short aFe tube into vehicle. Slide small end into coupling then other end into filter. Align tube correctly then tighten all clamps.

Step 24: Reconnect MAF sensor harness.



**Figure I****Refer to Figure I for Steps 25-27**

Step 25: Re-install the carbon fiber strut brace and bolts. Tighten them firmly. Make sure not to lock or squeeze the hood cable. Re-install windshield covers and clips.

Step 26: Make sure all clamps and screws are tight.

Step 27: Your installation is now complete.

**NOTE: Check all bolts, clamps and connectors after 100-200 miles.**

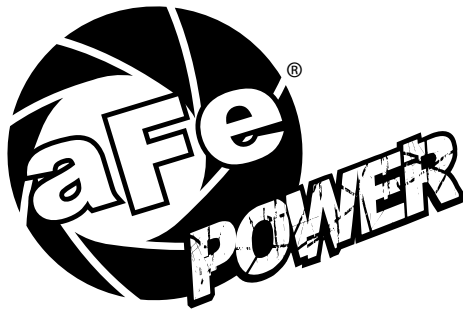
Page left blank intentionally





PAGE LEFT BLANK INTENTIONALLY

PAGE LEFT BLANK INTENTIONALLY



**advanced FLOW engineering, inc.**  
252 Granite Street Corona, CA 92879  
TEL: 951.493.7100 • TECH: 951.493.7134  
E-Mail: [Tech@aFepower.com](mailto:Tech@aFepower.com)