

## advanced FLOW engineering

### Instruction Manual P/N: 77-84007

Make: **Chevrolet** Model: **Silverado HD** Year: **2011-2014** Engine: **V8-6.6L (td) Duramax (LML)**

Make: **GMC** Model: **Sierra HD** Year: **2011-2014** Engine: **V8-6.6L (td) Duramax (LML)**



- Please read the entire instruction manual before proceeding.
- Ensure all components listed are present.
- If you are missing any of the components, call customer support at 951-493-7100.
- Ensure you have all necessary tools before proceeding.
- Do not attempt to work on your vehicle when the engine is hot.
- Disconnect the negative battery terminal before proceeding.
- Retain factory parts for future use.

| Label | Qty. | Description       | Part Number |
|-------|------|-------------------|-------------|
| A     | 1    | Module            | R77-84007   |
| B     | 1    | LED Switch        | 05-70013    |
| C     | 1    | Bypass Plug       | 05-70017    |
| D     | 1    | Harness           | AFE-10-115  |
| E     | 2    | Velcro (2 Inches) | 05-01244    |
| F     | 5    | Cable Ties        | 05-60167    |
| G     | 2    | Double Sided Tape | 07-90001    |

Warranty Information available at: <https://afepower.com/contact#warranty>

Note: Legal in California for use on race vehicles only. The use of this device on vehicles used on public streets or highways is strictly prohibited in California and others states that have adopted California emission regulations.





# SLEEP MODE

**Figure A**

## **Refer to Figure A for Step 1.**

Step 1: Before installing the aFe POWER Module you must place your vehicle's ECU in sleep mode. In order to place your vehicles ECU in sleep mode you will need to do the following:

- If the engine is cold, open the hood, close the doors, lock the car and wait 30 seconds
- If the engine is warm, open the hood, close the doors, lock the car and wait 20 minutes
- If the engine is warm and you can't wait 20 minutes, disconnect the battery



**Do NOT open the doors or start the vehicle when one of the sensor is disconnected. This could create a check engine light.**

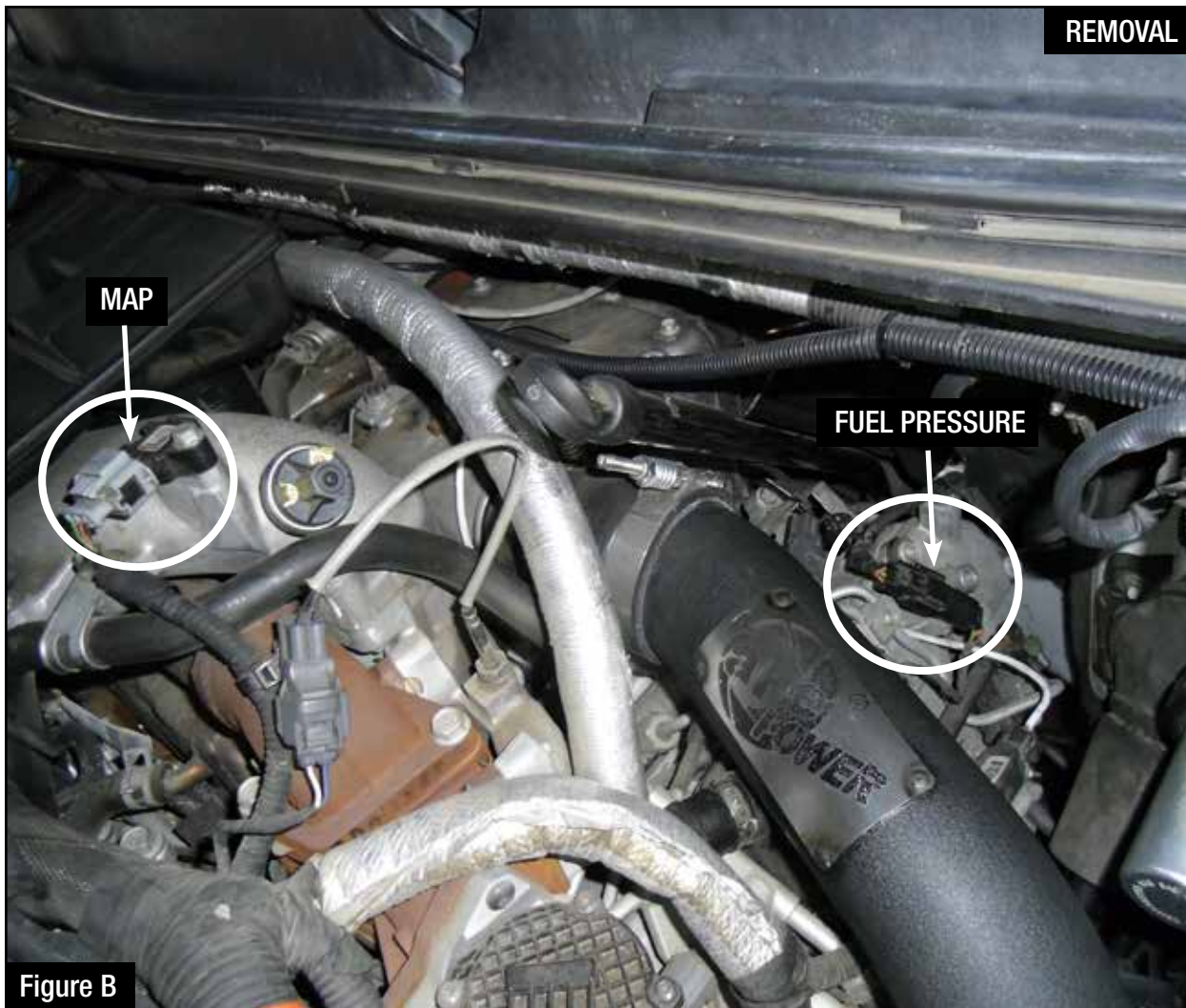


Figure B

**Refer to Figure B for Steps 2-3.**

Step 2: Locate the MAP sensor. The MAP sensor is on the top of the intake manifold.

Step 3: Locate the fuel pressure sensor connector. It is on the driver side valve cover, and it is accessible between the firewall and intercooler tube.

**Figure C****Refer to Figures C for Steps 4-5.**

- Step 4: Locate and disconnect the MAP sensor, by pressing down on the locking tab and sliding the connector out of the sensor.
- Step 5: Locate the MAP sensor jumper harness on the aFe POWER harness. This is the longer jumper harness with an orange rubber seal on the female connector. Plug the female connector of the aFe POWER harness to the MAP sensor, then take the male connector of the aFe POWER harness and connect to the female connector of the engine harness.





**Refer to Figure D for Step 6.**

Step 6: Check with the pictures to make sure the connectors are correctly connected.



**Make sure connections are fully engaged and not reversed. Usually, connectors make a snapping sound when fully engaged.**

**Figure E****Refer to Figure E for Steps 7-8.**

Step 7: Locate and disconnect the fuel pressure sensor connector, by pressing down on the locking tab and sliding the connector out of the sensor.

Step 8: Locate the fuel pressure sensor jumper harness on the aFe module. This is the shorter harness with a black and white female connector. Plug the female connector of the module to the stock fuel pressure sensor connector, then take the male connector of the module and connect to the female connector of the engine harness.





Figure F

**Refer to Figure F for Step 9.**

Step 9: Check with the pictures to make sure the connectors are correctly connected.



**Make sure connections are fully engaged and not reversed. Usually, connectors make a snapping sound when fully engaged.**

**Figure G****Refer to Figure G for Steps 10-11.**

Step 10: Connect the black ground terminal cable on the aFe module to the negative battery post by removing the 10mm nut and placing the terminal and reinstalling the nut.

Step 11: Connect the red power terminal cable on the aFe module to the positive battery post by removing the 10mm nut and placing the terminal and reinstalling the nut.



Figure H

**Refer to Figure H for Steps 12-13.**

Step 12: Secure the SCORCHER BLUE module on top of the fuse box near the master cylinder, or any other desired location using the Velcro provided.

Step 13: Connect the SCORCHER BLUE module to the harness. Make sure the connector is fully engaged.

**NOTE:** The doors of the vehicle can now be opened to proceed with the installation of the switch.





Figure I

**Refer to Figure I for Steps 14-15.**

**NOTE: The installation of the LED switch in the cabin is optional.**

Step 14: Select the desired location of the LED switch and route the cable through the top or bottom of the switch.

Step 15: Use the provided double sided tape to secure the LED switch in the desired location.



Figure J

**Refer to Figure J for Steps 16-17.**

Step 16: Carefully route the switch cable behind steering wheel cover or cabin trim cover.

Step 17: Route the switch cable through firewall and into the engine bay. Follow the main harness through the grommet into the firewall. Plug the end of the cable to the module.

**Figure K****Refer to Figure K for Steps 18-19.**

Step 18: Plug the end of the switch cable to the harness inside the engine compartment.

Step 19: Secure the wires away from any extreme heat and moving parts with the provided ties. Make sure all connections are secured and fully engaged.

**NOTE: The installation of the module itself is now completed. Keep reading the install instruction to learn how to use all its features.**





Figure L

**Refer to Figure L.**

The blue LED light will start flashing once the module is connected to the truck and the ECU on. The blue LED will become solid if the module gets connected through Bluetooth to a device.

**NOTE: The installation of the module itself is now completed. Keep reading the install instruction to learn how to use all its features.**



Figure M

### **Refer to Figure M (LED Switch).**

When turning on the vehicle, each LED will flash and it will stop at its last setting. The LED on the switch represents the different level of power.

- Green LED: Stock
- Yellow LED: Sport
- Orange LED: Sport+
- Red LED: Race

Use the grey button to select the desired setting. Power adjustments can be done at any moment while the unit is on. The LED switch can be used at the same time of the Bluetooth app.

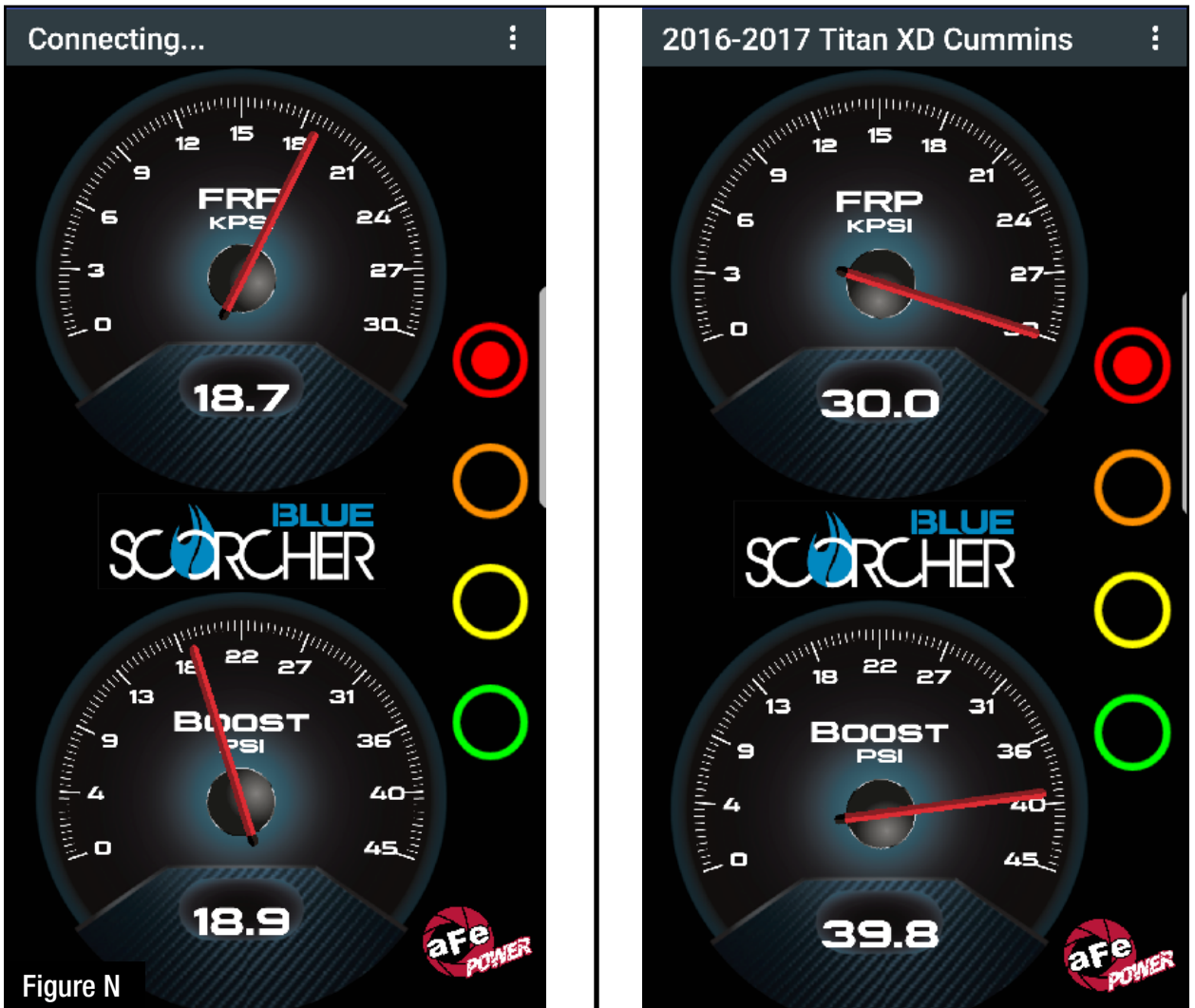


Figure N

### **Refer to Figure N (app connection - iOS).**

For iOS device, download the app from the apps store. Make sure the Bluetooth is activated on your device. Open the app and it will automatically connect through Bluetooth to the SCORCHER BLUE module when the vehicle and module are on. When connected, the vehicle description will show up on top of the screen and the gauges will show current data.

The blue LED light on the module will become solid once connected to a Bluetooth device. Simply tap on the green, yellow, orange and red button to switch between the modes.

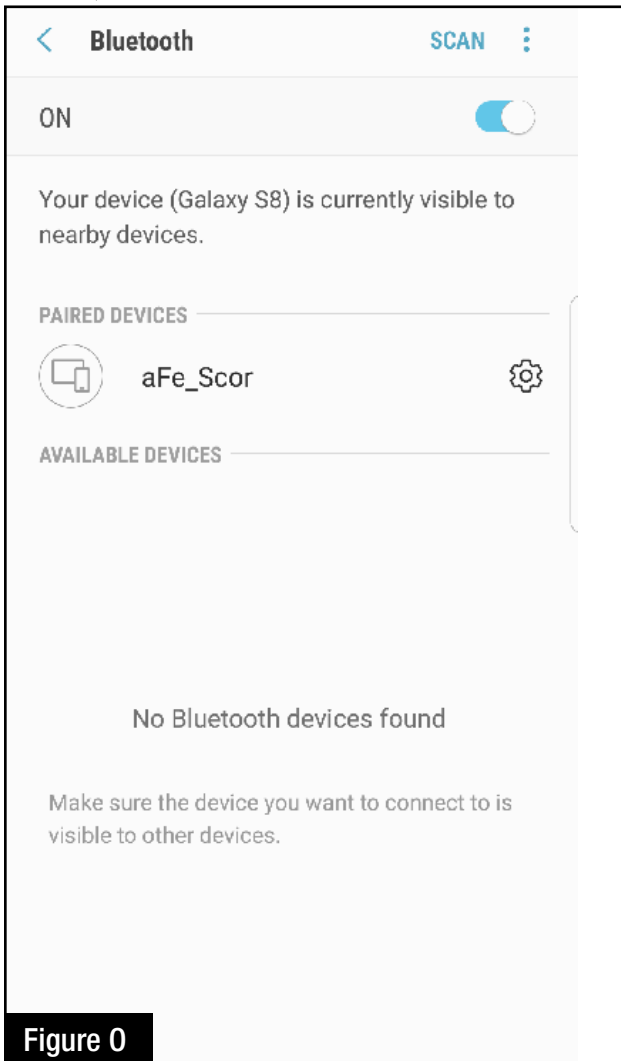


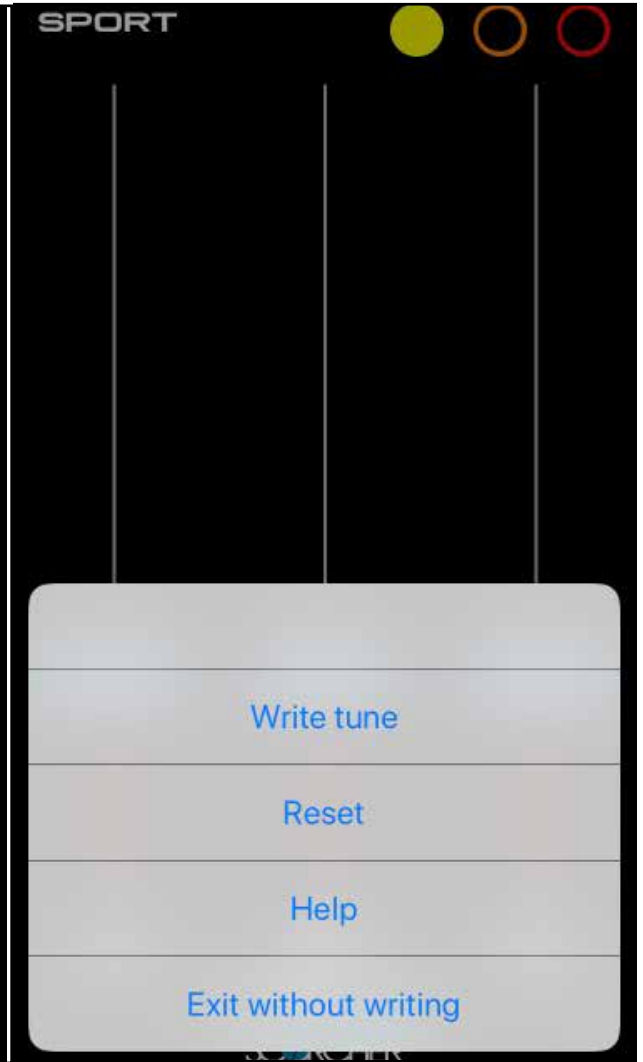
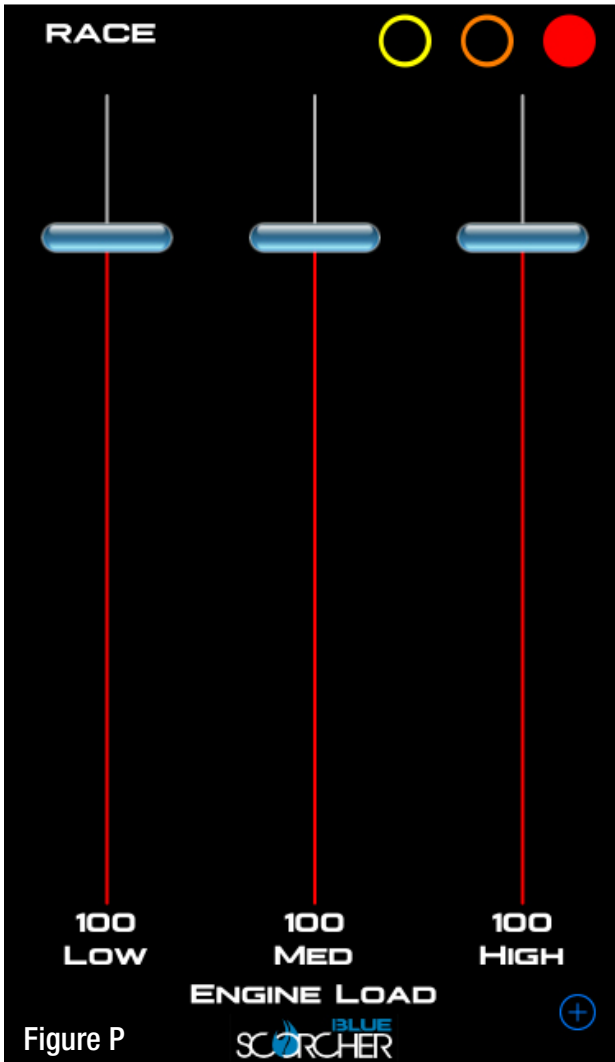
Figure 0



**Refer to Figure 0 (app connection- Android).**

For Android device, download the app from the play store. For the first connection, go to the Bluetooth settings of your device, turn on Bluetooth and scan for available devices. Select “aFe SCOR” and pair with device. The vehicle needs to be on and the module connected. Once shown as paired device, open the app on your device and it will automatically connect to the vehicle. The vehicle description will appear on top of the screen and the gauges will show current data.

The blue LED light on the module will become solid once connected to a Bluetooth device. Simply tap on the green, yellow, orange and red button to switch between the modes.

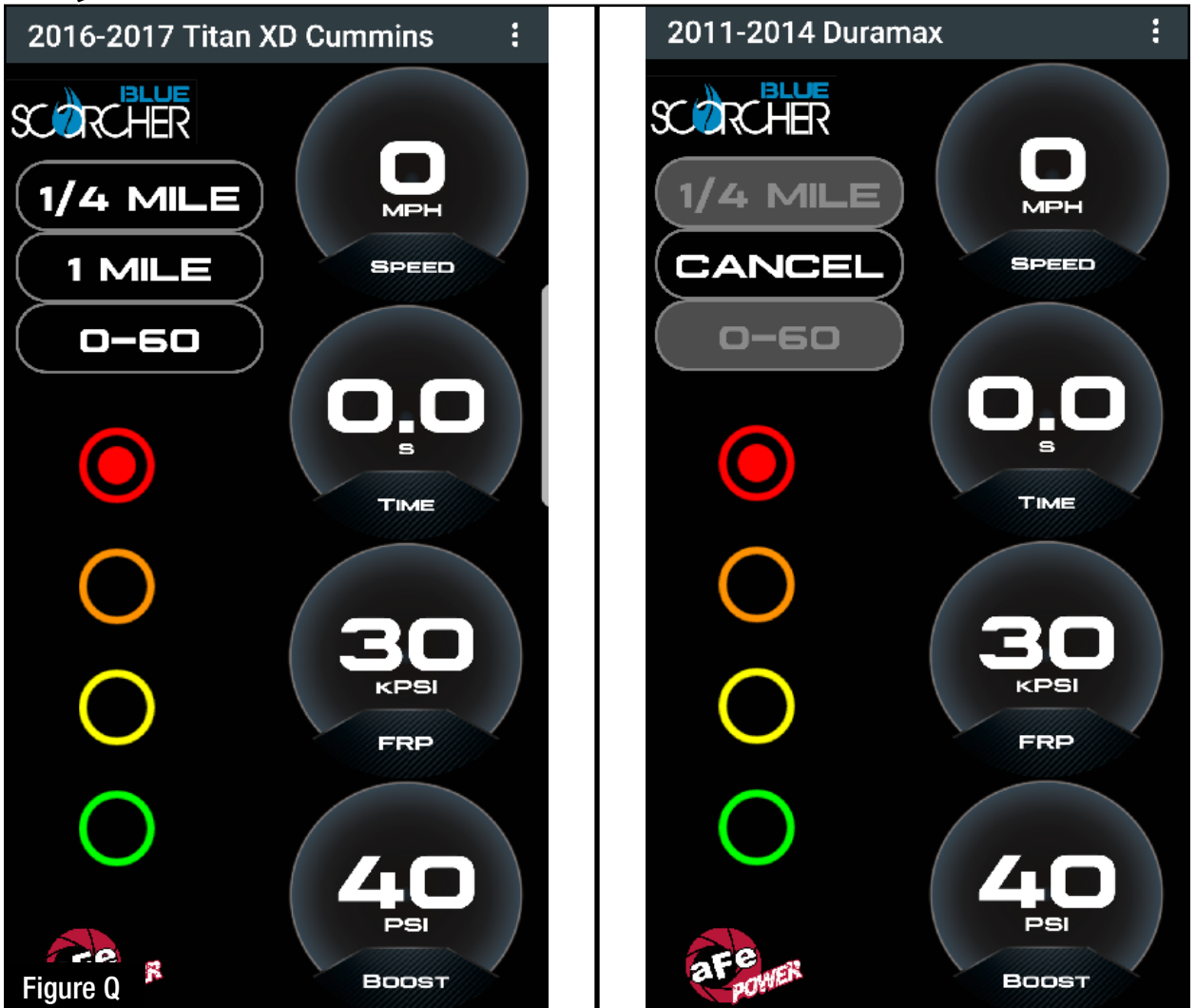


**Refer to Figure P (Custom Tuning).**

The aFe POWER SCORCHER BLUE app offers the capability to custom tune the different modes. Go to the menu on the top right corner and select “Tune”. Select the mode you would like to custom tune and adjust the sliders at low, medium and high load. You can either write the tune or exit without writing.



**Disclaimer:** Custom tuning should only be performed with the ignition in the “run” position and engine off. Configuring the tunes outside the default values may cause drivability issues and /or check engine lights to occur.



### **Refer to Figure Q (Vehicle Performance Screen).**

On the gauges screen, swipe to the left to get to the vehicle performance screen.

When the vehicle is not moving, select the test you are wanting to attempt (0-60mph, ¼ mile or mile). The app will automatically detect the movement of the vehicle and the timer will start. Once you reach the speed or distance, the timer will stop. If you select a new mode it will reset and you can start again. If you need to stop the test at any point, hit the cancel button and leave the screen.



**Use the aFe POWER SCORCHER BLUE app responsibly. Always drive safely and obey traffic laws. aFe POWER is not responsible for any accidents, injuries, or property damage that may occur during its use.**





**Figure R**

**Refer to Figure R (Bypass Plug).**

A bypass plug is included in the kit. The plug can be connected to the harness instead of the module. Once the bypass plug is connected the vehicle will run in factory settings. Make sure the plug is fully engaged when connected to the harness. Thank you for choosing aFe POWER!



**The vehicle needs to be in sleep mode when the module gets disconnected and the bypass plug connected. Wait for the blue LED on the module to stop flashing to make sure the truck is in sleep mode.**



Page left blank intentionally

Page left blank intentionally



**advanced FLOW engineering, inc.**

**252 Granite Street Corona, CA 92879**

**TEL: 951.493.7100 TECH: 951.493.7134**

**E-Mail: [Tech@aFepower.com](mailto:Tech@aFepower.com)**