

advanced FLOW engineering

Magnum FORCE Stage-2 Air Intake System

Instruction Manual P/N: 51-32112-B / 54-32112-B / 75-32112-B

Make: **Ford** Model: **F-150** Year: **2012-2014** Engine: **V6-3.5L (tt) EcoBoost**



- Please read the entire instruction manual before proceeding.
- Ensure all components listed are present.
- If you are missing any of the components, call customer support at 951-493-7100.
- Ensure you have all necessary tools before proceeding.
- Do not attempt to work on your vehicle when the engine is hot.
- Disconnect the negative battery terminal before proceeding.
- Retain factory parts for future use.

Label	Qty.	Description	Part Number
A1	1	Air Filter (Pro DRY S)	21-91040
A2	1	Air Filter (Pro 5R)	24-91040
A3	1	Air Filter (Pro-GUARD 7)	72-91040
B	1	Tube	05-32112B1
C	1	Housing	05-32112B2
D	1	Coupling, Silicone Reducer	05-01331
E	1	Coupling, Silicone Hump	05-01332
F	2	Clamp #064	03-50006
G	1	Clamp #052	03-50008
H	1	Clamp #044	03-50019
I	2	M6 Flat Washer	03-50070
J	3	M6 Lock Washer	03-50071
K	1	Screw M6 x 1 x 16	03-50052
L	1	Seal Trim: (24" in.)	05-00072
M	1	M6 Washer (12mm OD x 6.4mm ID)	03-50177
N	2	M6 Screw M6 x 1 x 25	03-50114

Tools required: 8mm nut driver, 10mm socket, extension & ratchet, 5/32" or 4mm socket (6-point) & ratchet.

Warranty Information available at: <https://afepower.com/contact#warranty>

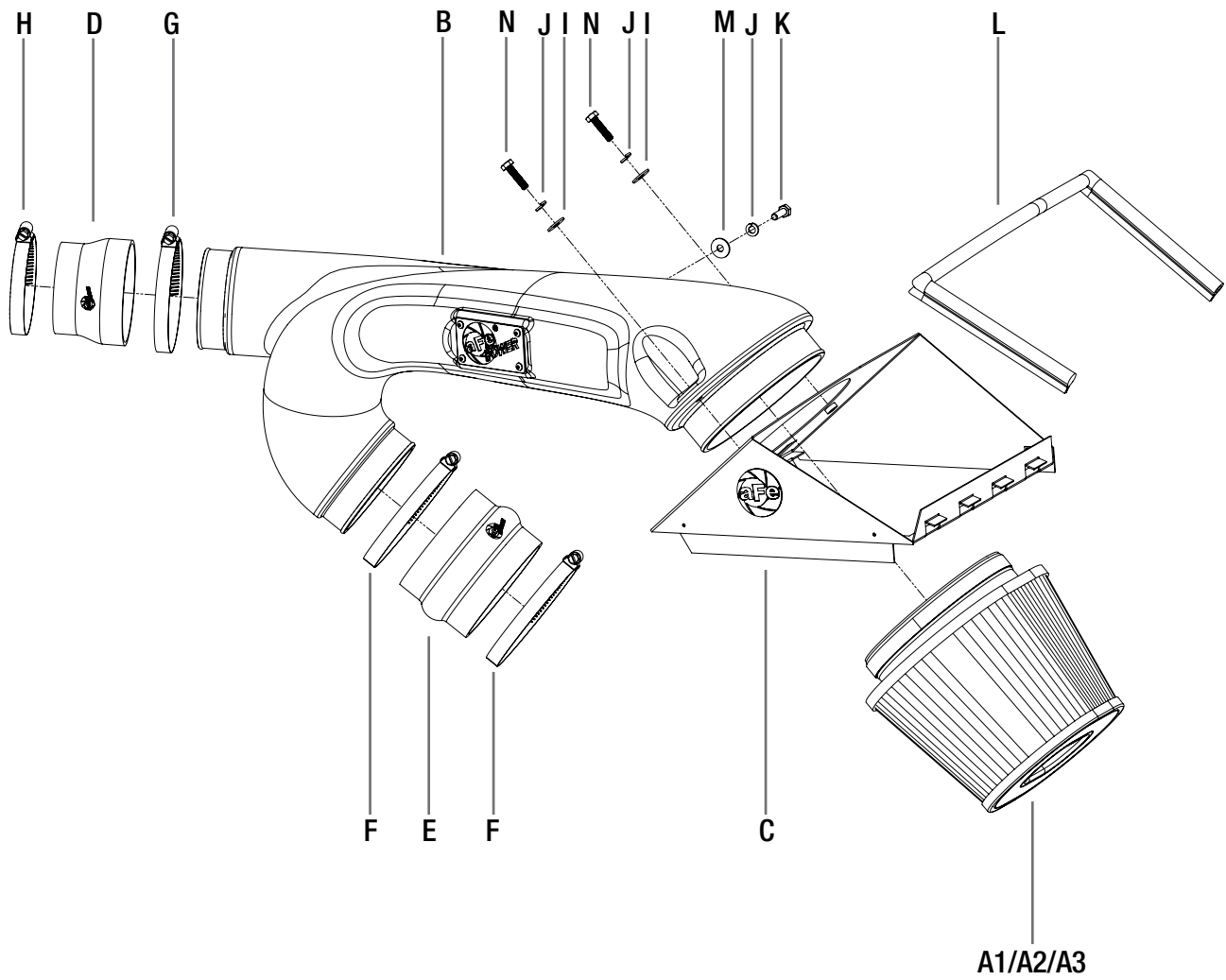




Figure A

Refer to Figure A for Step 1

Step1: Loosen the two clamps on the ends of the intake tube.



Figure B

Refer to Figure E for Steps 2-3

Step 2: Disconnect the electrical harness from the temperature sensor located on the top of the air box, but do not remove the sensor at this time to prevent accidental drops or damage.

Step 3: Unclip the three clips on the air box and remove the tube and intake cover as one assembly.



REMOVAL

Figure C

Refer to Figure C for Step 4

Step 4: Remove the stock air filter from the air box.

**Figure D****Refer to Figure D for Steps 5-6**

Step 5: Remove the stud from the temperature sensor using a 5/32" or 4mm 6-point socket.

Step 6: Pull the Temperature sensor out of the factory air box and set it in a safe place.



Figure E

Refer to Figure E for Step 7

Step 7: Attach the new aFe intake tube to the housing using the supplied M6x25mm long bolts, M6 lock washers, and large M6 flat washers. The Flat washer should rest against the plastic intake tube.



Figure F

Refer to Figure F for Step 8

Step 8: Attach the trim seal to the housing and make sure that it is secure all the way around. The pre-cut notches in the trim seal should be placed in the corners so that the trim seal can form easily to the shape of the air box.



Figure G

Refer to Figure G for Step 9

Step 9: Install the aFe air filter onto the end of the intake tube through the bottom of the housing. Align the filter so that the flat edge on the urethane flange is parallel to the front edge of the sheet metal housing.

**Figure H****Refer to Figure H for Step 10**

Step 10: Install the temperature sensor into the new aFe intake tube and secure it using the M6 x 16mm bolt, M6 lock washer, and small M6 flat washer.



Figure 1

Refer to Figure 1 for Step 11

Step 11: Install the couplers and clamps onto the factory intake tubes. The reducer coupling goes on the upper intake tube and will use the 044 clamp and the 056 clamp. The straight hump coupler will go on the lower intake tube and it will use the two 064 clamps.



Figure J

Refer to Figure J for Step 12

Step 12: Install the intake assembly into the truck. Line up the tabs on the housing to the proper locations in the factory air box, then align the two ends of the intake tubes into the couplers. Make sure that the clamps are loose before sliding the tube into the couplings.



Figure K

Refer to Figure K for Step 13

Step 13: Plug in the temperature sensor harness. Make sure that the wire cannot contact any moving components such as the accessory belt or the cooling fan.



Figure L

Refer to Figure L for Steps 14-16

Step 14: Clip the two outside clips to secure the housing to the factory air box.

Step 15: Tighten all clamps and check all hardware at this time.

Step 16: Check all the components are tight and secure. Your installation is now complete.

NOTE: Retighten all connections after approximately 100-200 miles.

Place the included CARB EO sticker on or near the device on a smooth, clean surface.

EO identification is required to pass the smog inspection.



advanced FLOW engineering, inc.
252 Granite Street Corona, CA 92879
TEL: 951.493.7155 • TECH: 951.493.7100
E-Mail: Tech@aFepower.com