

# Install Instructions

## PRP Seats

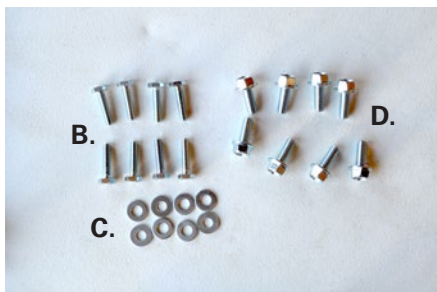
### Can-Am Maverick X3

### Suspension Seat Installation



#### Parts

A.



**Read through all of the instructions completely before beginning the install.**

#### Parts Included:

- A. 2, PRP Can-Am X3 Seat Mounts
- B. 8, 1/4" x 1" x 20 Bolts
- C. 8, 1/4" Washers
- D. 8, 8mm x 20mm x 1.25 Flange Head Bolts

**Remove all parts from the box and unwrap completely using the packaging to lay out the pieces.**

#### Tools Needed: (not included)

- 12mm Open end wrench and/or Socket
- 13mm Open end wrench and/or socket
- 7/16 open end wrench and/or socket.

#### Time:

Approx 15–20 minutes.



### 1. Remove the stock seat bolts

Remove the stock seat cushion to expose the bolts.

Using a 13mm driver, remove the 4 bolts holding the seats in.



### 2. Remove seat

NOTE: The slider adjuster passes through a slot in the front of the seat. You must either cut it open or, to remove the seat without cutting, detach the slider assembly under the seat and rotate the slider in order to pass the handle through the opening.



### 3. Adjust slider spacers to desired height.

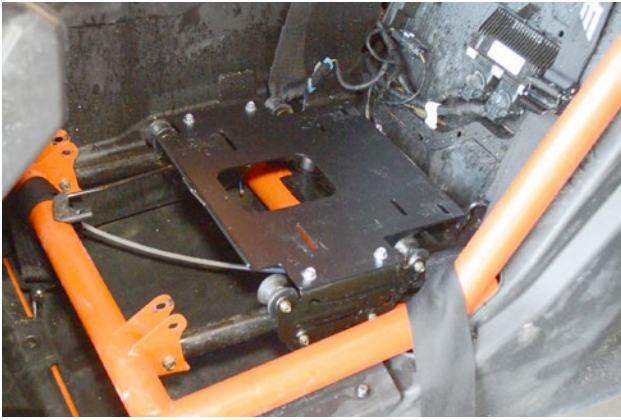
Before installing your PRP Seats, we suggest you place the aluminum spacer at the back UNDER the slider. Depending on your size, you may want it lower.



### 4. Adjust front pivot point to desired height.

In addition, we suggest moving the front pivot point of the sliding assembly to the lower location. This gives you the best seating angle when using PRP Seats. Your needs may vary.

NOTE: A lowering kit is available (part no. C54), allowing you to position the front of the mount 2" lower.



### 5. Install seat mount

Using the flange head bolts, secure the seat mount to the slider assembly with the 12mm wrench or socket.

NOTE: Be sure the tab for the 5th point of your harness is facing forward and up.



### 6. Move seat mount assembly forward

For easiest installation of the seat, move the entire slider assembly to the forward position.



### 7. Install seat

Place the seat in position, lining up the holes in the mount to the threaded holes on the bottom of the seat. Attach the seat with the 1" bolts and washers by reaching under the seat and inserting the bolts upward. Hand tighten all 4 at first then secure completely.

NOTE: You may receive 2, 1" square tubes with your seat. These are not required and can be discarded.



### 8. Aaaaaand, your done!

Congratulations! Your new PRP Seats for your Can-Am Maverick X3 are installed and ready to use.

If you have any questions or experience issues, please contact your retail outlet first for assistance. However, the staff at PRP is always happy to help at **1-800-317-6253**.

**Thank you! Ride Safe!**