

Install Instructions

PRP Seats

Can-Am Maverick Sport Base Installation



Parts

A.



Read through all of the instructions completely before beginning the install.

Parts Included:

A. Seat Adapter Brackets
2 x Can-Am Maverick Sport Mounts

B. Hardware
8-1/4x20 nut rivets

C. Rivet Tool

B.



Tools Needed:

Rivet Tool (Included)
T30
13mm Socket
10mm Wrench (with Ratchet End)
7/16" Socket
3/8" Drill Bit and Drill

Time:
Approx 2 Hours.



1. Remove Can Am factory seat cushions from the vehicle to expose the Can Am factory seat base.
This installation can be completed with the Can Am factory seat bases remaining inside the vehicle, however for illustration purposes we have removed them from the vehicle.

Steps 2-3 are Optional



2. (Optional) If you would like to remove the seat base for install - Remove the six 13mm bolts and the one T30 Torx bolt securing the factory seat base inside the vehicle and remove the factory seat base entirely.
3. (Optional) Removing the factory vertical back rails from the base will give you approx. 1.5" - 2" more leg room after the installation. However you will not be able to reuse your factory seat cushions in the future.

To remove - Use a cutoff wheel, (or a Sawzall) and a grinder to remove the four vertical stock seat supports at their junction with the seat base. After they are removed - Prep and paint the factory seat base to avoid corrosion.



4. Place the PRP seat mounting plate on the factory Can Am seat base and align it in the center of the factory seat base.
Use the front bar of the factory seat base to square the PRP mounting plate in the center of the factory seat base. The "dog ear" bends in the PRP mounting plate should be to the rear of the Can Am factory seat base as shown in the photograph below.

Once the plate is perfectly centered, use a paint marker/sharpie to mark where the four 3/8" holes on the plate line-up on the Can-Am seat base.





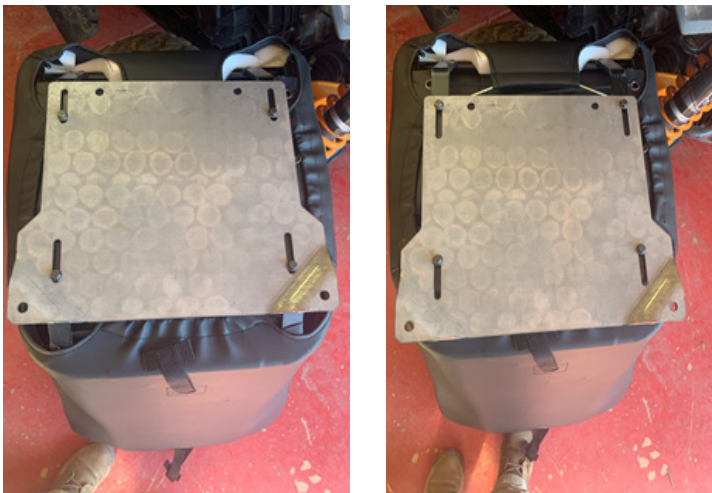
5. Remove the PRP mountain plate. Center punch the marks you made as carefully and accurately as possible. It is important to center punch these marks as close as possible to the center of the paint markings.
6. Drill out the holes you just marked using a 3/8" drill bit.
7. Use the supplied Nut Rivet tool to install 8x - 1/4x20 nut rivets inside the 8 holes you just drilled.
Note: The tool comes with other inserts you will not need for this project.



8. Install the PRP seat mounting plates to the bottom of your PRP seats with a 7/16" socket using the supplied 8x - 1/4"-20 x 3/4" bolts and tighten.
Note: Mount the seat farther forward or back on the plate to have more or less legroom.
9. Re-Install the (8) stock nuts using a 10mm wrench. (Use a wrench with a ratchet-end to make this fast and easy)

Tip: Slide the seat forward and backward to get better access underneath the seat.

Tip: Pull open the release lever to better access the bolts/nuts hidden behind it.



10. (Optional) If you removed the factory bases in Step 2, then reinstall the modified Can-Am factory seat bases back inside the vehicle and secure with the factory hardware.

The two outside rear bolts are the most difficult to secure, the other three bolts are readily accessible. We suggest using a 7/16" box end ratchet wrench with a flexible end to tighten these eight bolts.



11. And you're all set!

If you have any questions or experience issues, please contact your retail outlet first for assistance. However, the staff at PRP is always happy to help at 1-800-317-6253, or email customerservice@prpseats.com

Thank you! Ride Safe!