

# Install Instructions

## PRP Seats

### Polaris PRO XP Bucket & Bench

## Install Instructions



Read through all of the instructions completely before beginning the install.

A.



#### Parts Included:

- A. (2) PRP Seat PRO XP4 Rear Bracket Mounts
- B. (12) 6mmx20mm Self-Threading Bolts
- C. (8) 1/4" x 20 x1" Bolts
- D. (8) 1/4" SAE Washers

Remove all parts from the box and unwrap completely using the packaging to lay out the pieces.

#### Tools Needed: (not included)

- 13mm Socket
- 13mm Wrench (Ratchet End)
- 8mm Socket
- 8mm Wrench
- 7/16" Socket
- Drill / Impact Gun
- T40

**Time:**  
**Approx 1 Hour.**

B.



C.



D.

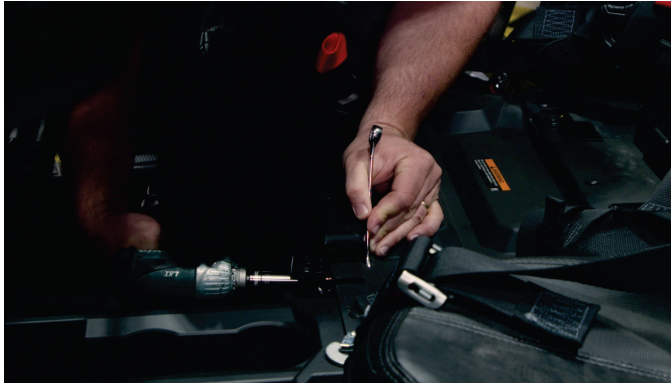




## 1. Remove your stock rear seats.

Depending on the model of PRO XP the removal of your stock bottom cushion is different. Some vehicles have a bottom cushion that flips forward, others have a cushion that is fixed in place.

You will need to remove the cushion and the brackets that hold the cushion down. Use a 13mm socket and wrench / T40 to remove the bolts that secure the seat base, then remove it from the vehicle.



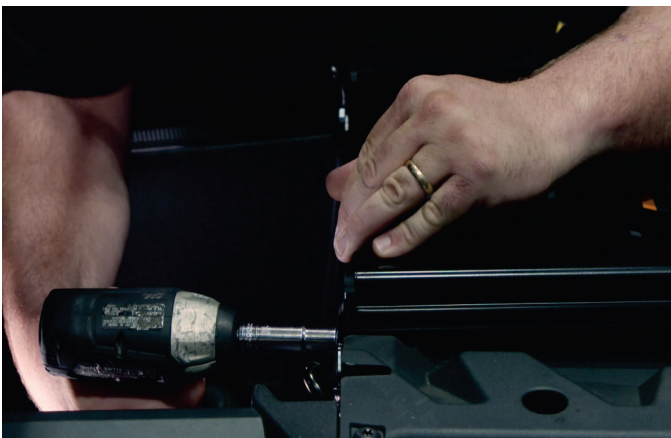
Use a 8mm wrench and socket to remove the 2x attachment bars up top that the stock seat would clip to.



## 2. Install the Seat Mounts

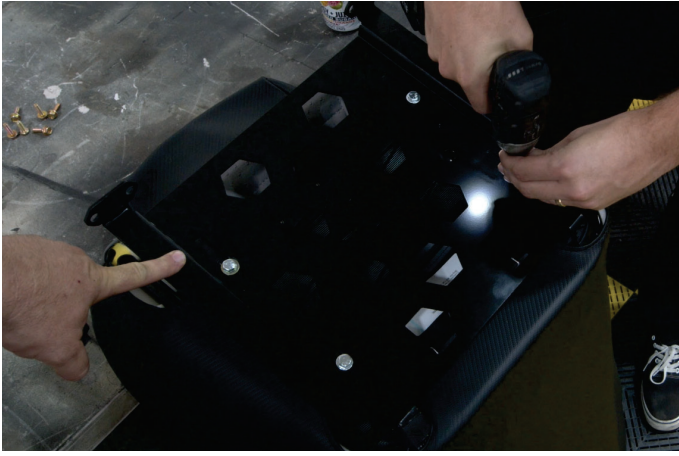
Place your new PRP Rear Seat Mounts in the same location as the bottom cushions you just removed. Notice the 4 mounting holes in the front, and two holes in the rear that line up with the PRP bracket.

On some PRO XP models these holes come threaded from the factory, but on others they are not. So we have included (12x) self-threading 6mm bolts.



Use a 13mm socket with an impact gun and install those (12x) bolts to create the thread on each mount. (It's easier to do this without the seat).

Once all the bolts are set & threaded, remove all 12x bolts, and take the seat mounts out of the vehicle.



### 3. Install the Mounts onto the Seats

Remove the mount plates, and place them on the bottom of your new PRP Seat. \*Notice the front of the plate goes towards the front of the seat.

Use the supplied (4x) 1/4" x20 x1" bolts with washers and a 7/16" socket to bolt the plates to the bottom of your PRP Seats. You can adjust the seat farther forward or back as you like on the mount (\*we recommend having the bolts 3/4 of the way back).



### 4. Install the Seat & Mount

Now set the seat and plate back into the vehicle and line up the mounting holes so you can reinstall the self-threading 6mm bolts using a 13mm socket or wrench (\*use a ratcheting end wrench on the rear bolts for easy access)

### 5. Bench Seats

Note if you are installing a bench you will need to install both plates to the bottom of the bench and then set the bench and plates down into place.

Then reinstall the 6mm self-threading mounting bolts. The inside rear mounting bolt on each side will be difficult to install but you should be able to reach under the bench seat to access the rear bolts with ratcheting end wrench.



**Note:** if you have the 6-point OEM seat belts you will not be able to use them with the PRP bucket or bench seat.

### 4. And you're all set!

If you have any questions or experience issues, please contact your retail outlet first for assistance. However, the staff at PRP is always happy to help at **1-800-317-6253**, or email **customerservice@prpseats.com**

**Thank you! Ride Safe!**

