

Install Instructions

PRP Seats

CF Moto 13 - 20 ZForce- 2 Door Seats Installation



Parts

Read through all of the instructions completely before beginning the install.

A.



A. Hardware
4 - 1/4"x20x1"

Remove all parts from the box and unwrap completely using the packaging to lay out the pieces.

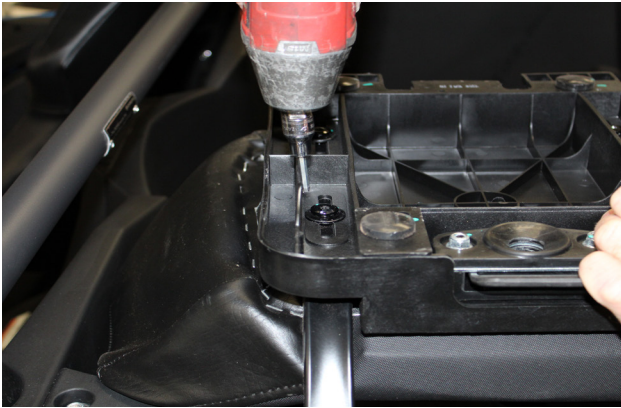
Tools Needed: (not included)
#4 Allen wrench
Drill (Optional)

B.

Time:
Approx 2 Hours.



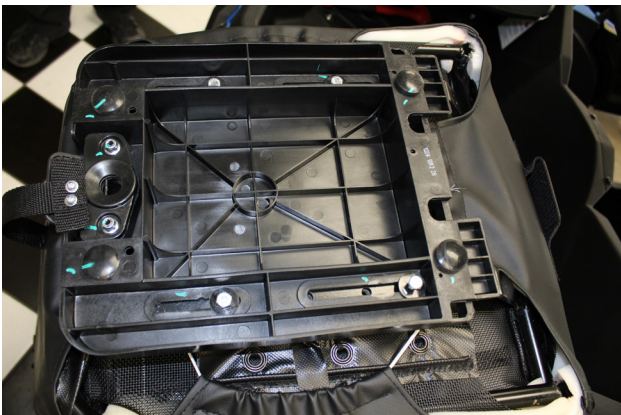
1. Remove the stock seats from the vehicle using the release latch behind the seat.



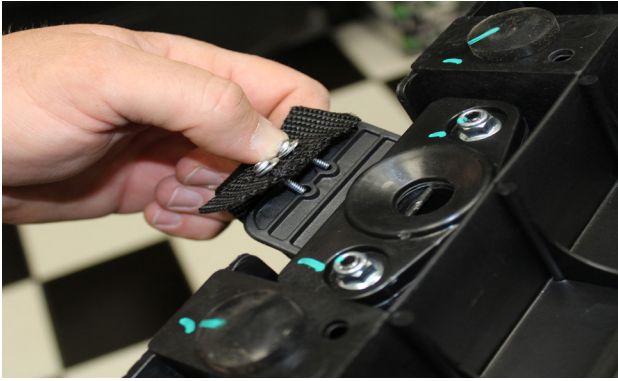
2. Using a #4 Allen remove the four bolts holding the plastic pan to the stock seat.



3. Turn the PRP seat upside down on its head and place the plastic pan onto the PRP Seat.



4. Using the 4 – 1/4"x20x1" bolts and washers, bolt the plastic pan down to the PRP Seat. The PRP seat has several threaded mounting holes available. Choose whichever ones line up and get your seat to the desired location. Keep the bolts loose until you test fit the seat back into the vehicle. This way you can get it as far forward as back as you like.



5. In a red plastic bag taped to your seat bag we have included 4 small screws nuts and washers used to attach the webbing at the bottom of the seat to the release latch on your seat pan. Depending on the year of your Z Force you may need to drill the 2 small holes out on your latch so the included screws fit through the holes. This webbing tether is used to release the seat from the vehicle.



6. (Optional) Once the PRP seat is installed you will notice that it is wider than your stock seat and hits the inside plastic panel. If you want the seat to slide back farther, you will have to trim this plastic piece. PRP does not have instructions on how or where to do this.



7. Place the PRP Seat into the vehicle.