

# INSTRUCTION SHEET FOR SET #5.1111

Read this instruction sheet thoroughly before initiating any work!

It is recommended that if you are unfamiliar with this type of work that you refer to a qualified service center specializing in this type of work. It is also recommended that if you choose to do this work yourself that a factory service manual be obtained for the proper procedures pertaining to removal, replacement and proper torque specifications for your vehicle. This instruction set is intended as a guideline for the safe installation of Energy Suspension's Polyurethane.



1131 VIA CALLEJON, SAN CLEMENTE, CA 92673

© 2005 Energy Suspension. All rights reserved.  
May not be reproduced, in any form, or by any means,  
without the written consent of Energy Suspension.

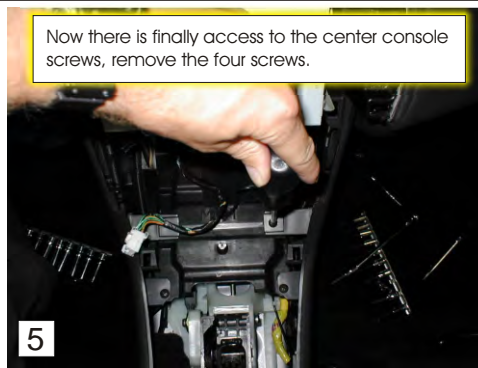
Use caution when handling clips, brackets, etc. They are made of plastic and are easy to break. Be delicate, they are the only thing holding most of the panels together.

## PARTS LIST:

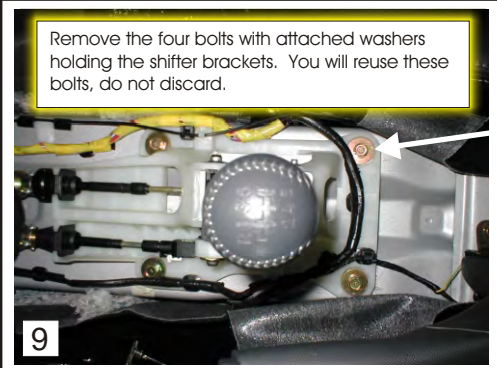
- 4 - 1214 Lower Shifter Bushing
- 4 - 1215 Upper Shifter Bushing
- 1 - 17466 Instruction Sheet



Carefully pry up on bottom edge of stereo panel, the entire console removes, there are two clips on the bottom, disconnect wire harness.



Now there is finally access to the center console screws, remove the four screws.



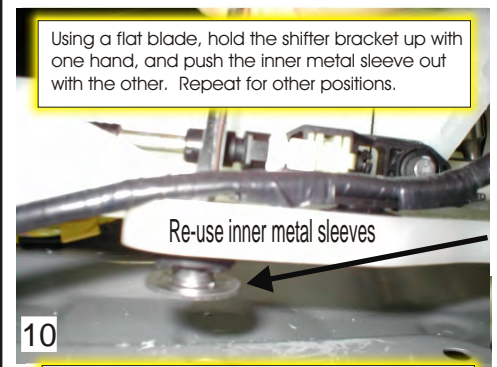
Remove the four bolts with attached washers holding the shifter brackets. You will reuse these bolts, do not discard.



Carefully pry up on bottom edge of heater control panel, there are two clips on the lower section, disconnect wire harness.



Flip the lid up in the rear of the console, pop up the bottom tray piece, disconnect wires. Remove the three screws



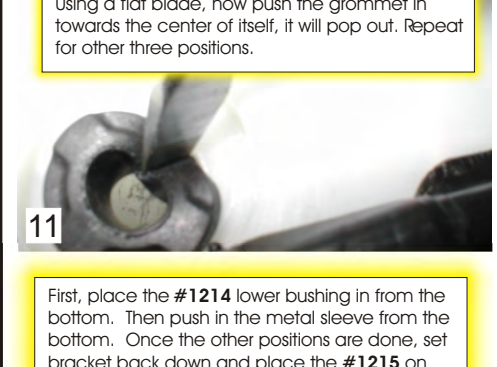
Using a flat blade, hold the shifter bracket up with one hand, and push the inner metal sleeve out with the other. Repeat for other positions.



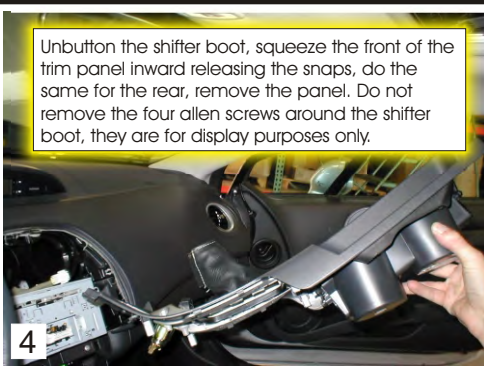
Remove the heater switches. They are held in with clips, disconnect wire harness.



The last fasteners holding the center console are the two clips at front sides. Use a small flat blade to pop clips. Now remove entire center console.



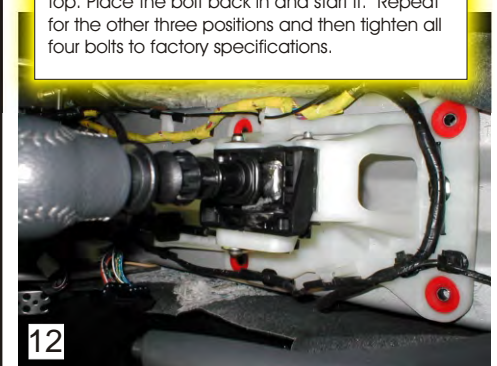
Using a flat blade, now push the grommet in towards the center of itself, it will pop out. Repeat for other three positions.



Unbutton the shifter boot, squeeze the front of the trim panel inward releasing the snaps, do the same for the rear, remove the panel. Do not remove the four allen screws around the shifter boot, they are for display purposes only.



Remove the four screws and now remove the entire center console support bracket.



First, place the #1214 lower bushing in from the bottom. Then push in the metal sleeve from the bottom. Once the other positions are done, set bracket back down and place the #1215 on top. Place the bolt back in and start it. Repeat for the other three positions and then tighten all four bolts to factory specifications.