

Installation instructions

04-07 Mazda RX-8

Set # 11-3107



1131 VIA CALLEJON, SAN CLEMENTE, CA 92673

© 2010 Energy Suspension. All rights reserved.
 May not be reproduced, in any form, or by any means,
 without the written consent of Energy Suspension.

Note: It is recommended that this set be professionally installed if you are unfamiliar with this type of work, and a factory service manual be purchased prior to performing any work on your vehicle for proper disassembly, reassembly and torque specs. These instructions are intended for bushing removal and install of Energy Suspension polyurethane bushings, once you have removed the factory component from your vehicle.

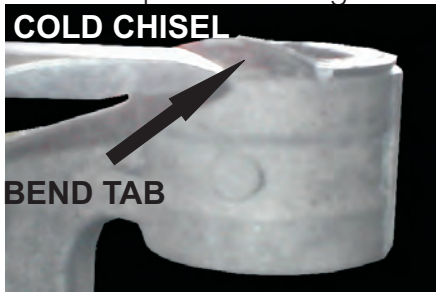
STEP 1: Remove the stock sleeves from the control arm.

To remove stock sleeves, apply light heat evenly inside the sleeve, just enough to brake the bond with the rubber. When you see light smoke coming from the sides of the bushing the bond should be broken. At no time should there be any flames coming from the rubber, if there are any flames, you need to back off with the heat. Apply heat to the outer metal casting to remove the rubber.

STEP 2: After the stock sleeve has been removed, use a hacksaw to cut tabs on both sides of the stock outer shell. (Note: Upper control arm shown below **2707 2 PLACES**)
CAUTION: Do not cut into the control arm during this step.



STEP 3: Using a cold chisel, bend back the tabs to make room for a piece of tubing to fit so the stock shell can be Pressed out.



STEP 4: Install the 2707 Bushings in the Upper Control Arms

Grease bushing #2707 and sleeve before inserting, the flange will be to the outside (Pic. Shows the rear position) Front and rear position use the same bushing.

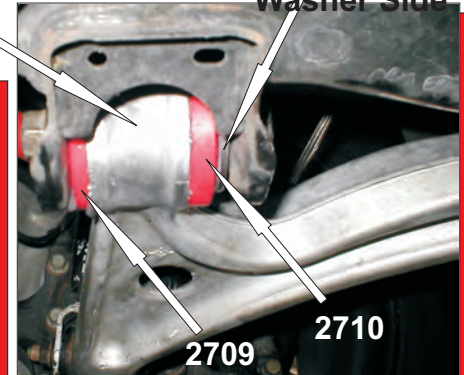


Lower Control Arm Front position

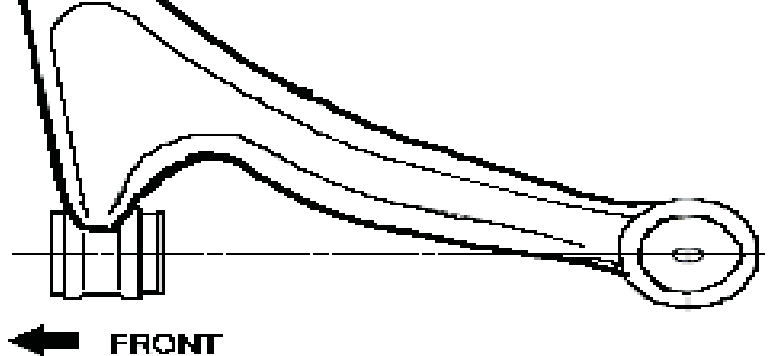
Stock Sleeves Must Be Re-



Stock Sleeve Washer Side



After the rear bushing is pressed in the lower control arm, press in the stock sleeve and align it so the oval inside diameter is parallel to line drawn below.



GREASE ALL PARTS THAT COME INTO CONTACT WITH POLYURETHANE

17506

17/JUN/10 BO