

High Clearance Rear Bumper

2021+ BRONCO

RBBR-02



TOOLS REQUIRED

- 10,13,18, 21mm Sockets
- #4 Allen Head
- Zip Ties
- Silicone (Optional)
- Electrical Tape

SKILL LEVEL

- Novice/Intermediate
 - 1 to 2 People
- Little skill level required.

TIME REQUIRED

- Approximately 2.5 Hours
- Time to install this should take about 2.5 hours

WARNINGS/CAUTIONS BEFORE STARTING INSTALLATION

Before you install this kit – Read and understand all instructions, warnings, cautions, and notes contained in this installation instruction guide. Consult your vehicle owner’s manual for proper disconnection of electrical and lifting of vehicle if required for installation of this product.

This install may require some technical skills and knowledge of basic mechanical work. If you do not feel that you are capable of performing this install please take this product to a trained professional.

After reading this guide please contact us with any questions or concerns before installing product.
Customer Service: 855-680-9595

DV8 Offroad is not responsible for any bodily injury or harm to you or your vehicle as a result of an improper install.

Proper installation of this kit required knowledge of the factory recommended procedures for removal and installation of original equipment components. We recommend that the factory shop manual and any special tools needed to service your vehicle be on hand during the installation. Installation of this kit without proper knowledge of the factory recommended procedures may affect the performance of these components and the safety of the vehicle

- Always wear eye protection when operating power tools

Inspect all contents of this package to make sure product is not damaged and all installation hardware has been included. If parts are missing from kit, please be prepared to provide the following information

1. Name of purchase location
2. Bar Code on side of box
3. Date above bar code
4. Date inside box cover



INSTALLATION MANUAL

STEP 1

Unplug the factory bumper from the Bronco. Locate the small plug just to the rear of the rear wheel wells on each side of the bumper.



STEP 2

Using a 13mm socket, unbolt the side bumper supports on each side of the bumper just outside of the frame rails.



STEP 3

Remove the lower four bumper bolts using a 18mm socket.

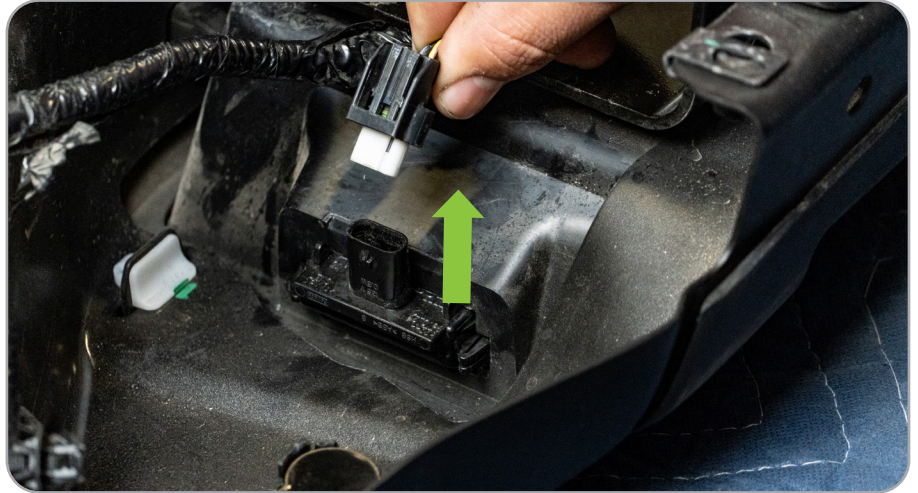
Note: When you do this, the bumper can become free from the vehicle and can fall. Ensure you have another person holding it, or the bumper secure to prevent falling and injury.



INSTALLATION MANUAL

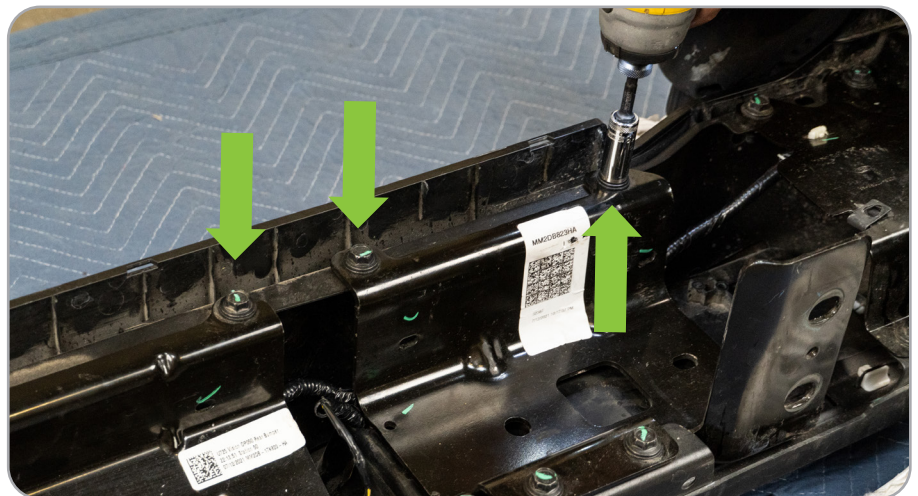
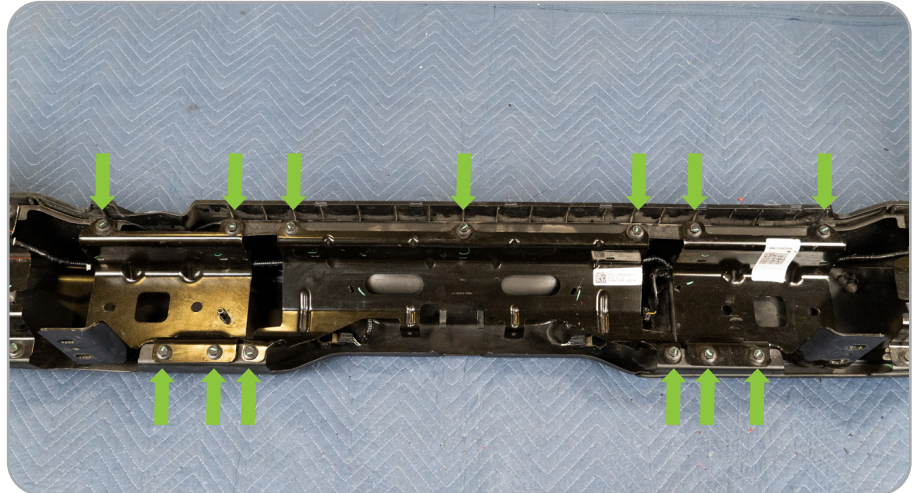
STEP 4

Once bumper is removed, lay on soft surface face down. Unclip the license plate light by squeezing the plug and pulling away from the bumper.



STEP 5

Remove the thirteen bolts holding the three center brackets using a 13mm socket.



INSTALLATION MANUAL

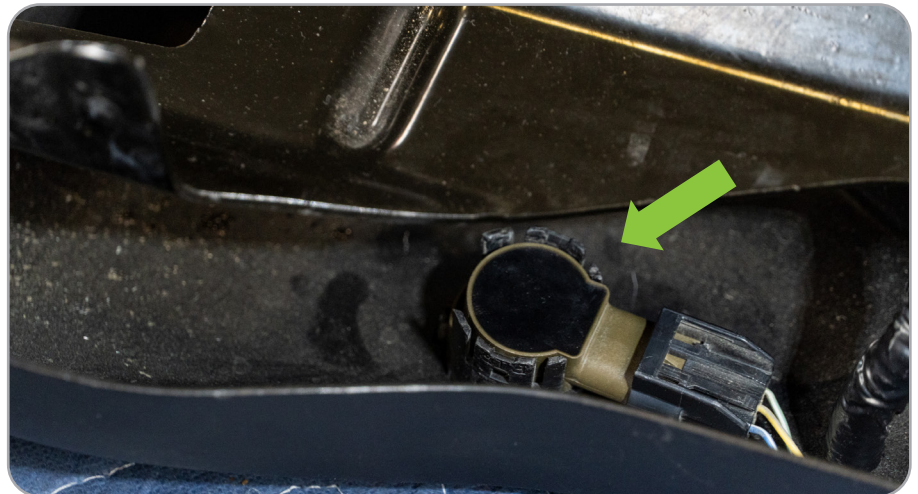
STEP 6

Using a push pin removal tool, remove point where the wire harness is connected to the bumper or brackets.



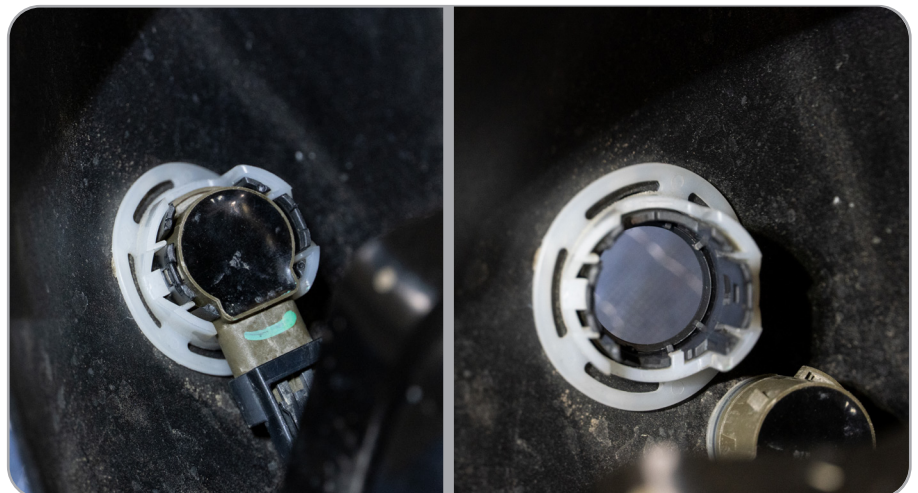
STEP 7

Remove the two center sensors from the sensor bezels by spreading the two tabs on the bezels and pull the sensor up.



STEP 8

To remove the outer sensors, spread the tabs on the inner gray sensor bezel to release the sensor, and once removed, squeeze the same tab while pulling the face of the bezel on the outside to release the bezel from the white cage.



INSTALLATION **MANUAL**

STEP 9

Lean the bumper forward, and while pulling the face of the sensor bezel from the outside of the bumper, squeeze the two tabs on the bezel near the bumper to remove the bezel.



STEP 10

Carefully, pull the wire harness away to be used on your new DV8 bumper.

You are now done with the removal of your Bronco bumper.



INSTALLATION MANUAL

STEP 1

Begin by unpacking all items and inspecting for missing pieces or damage. If you have any concerns, please contact the company the product was purchased from.

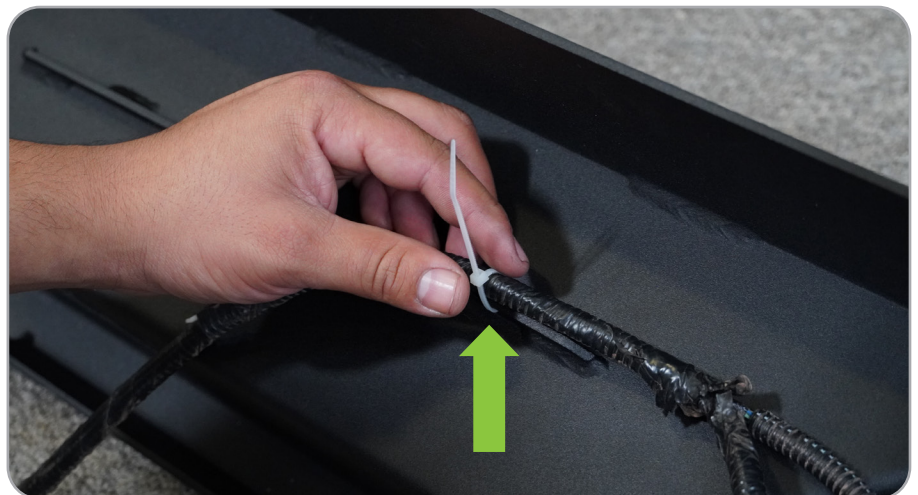
Hardware Included:

- (4) M14x35mm Bolts
- (4) M6 Lock Nuts
- (4) M14 Nuts
- (8) M6 Flat Washers
- (4) M14 Split Nuts
- (8) M14 Flat Washers
- (4) M6x20mm Bolts



STEP 2

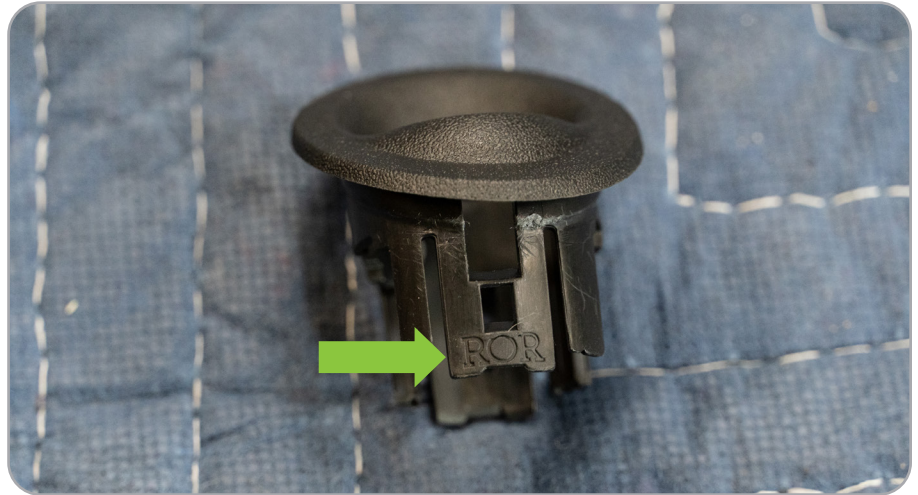
Begin by laying the bumper face down on a soft surface to prevent damaging the face. Feed the harness through the opening in the bumpers so that all sensors lay near their respective openings. Secure harness to bumper using zip ties on welded-in zip tie tabs



INSTALLATION MANUAL

STEP 3

To install the sensor bezels into the bumper, identify the location of the bezel by reading the identifier on the bezel. For example, our image shows “ROR” which stands for rear outer right.



STEP 4

On the two center bezels, you will need to trim down the tabs on the side to allow for the thicker material our bumper uses. Trim slightly and test fit until these tabs sit on the backside of the bumper and the bezel sit flush to the face of the bumper.



INSTALLATION MANUAL

STEP 5

Lean the bumper back and fit the two inner sensor bezels into place.

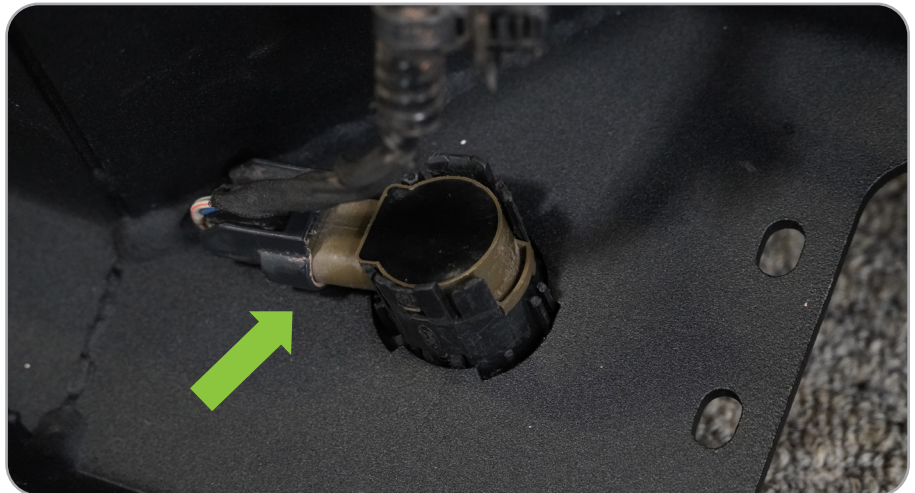
Note: Our bumpers are designed to accept both factory metal bumper and plastic bumper sensor bezels. All cutouts are cut differently to ensure each bezel is placed into the correct hole



STEP 6

Install the sensors by holding the face of the bezel and clicking the sensor into place.

Note: If the sensor will not click into place easily, you may need to trim the tabs more from step 4.

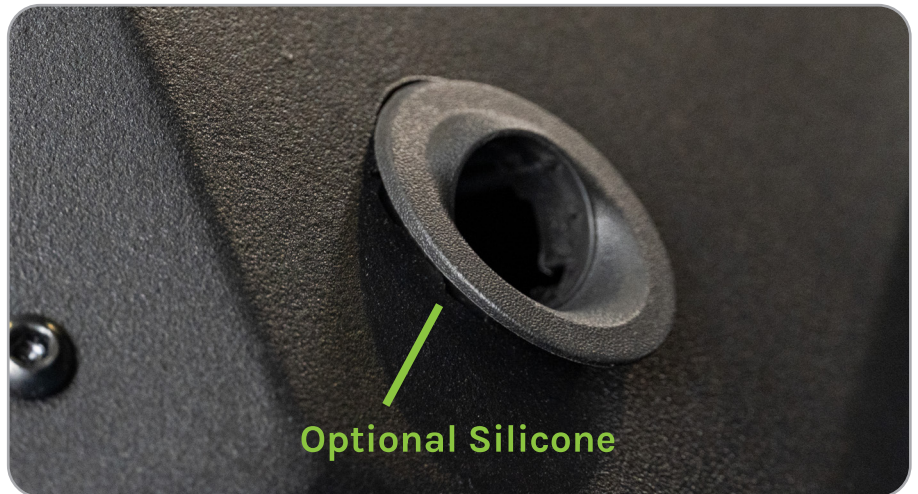


INSTALLATION MANUAL

STEP 7

The thickness of our bumpers will not allow you to reuse the outer bezel cages, so after you install the sensor into the bezel, using a zip tie, tighten around the sensor and bezel while pushing zip tie up against bumper. You can also utilize a small dab of silicone between the backside of the bezel and the front face of the bumper.

Note: On the DV8 bumper, these should be oriented down.



INSTALLATION MANUAL

STEP 8

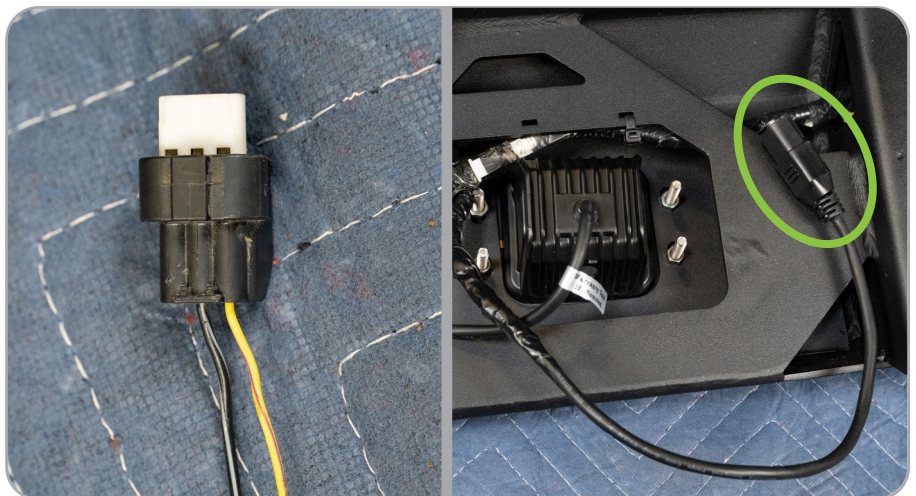
We are installing two 3" flush mount pods (not included).

Note: We are running two 3" Flush Mount DV8 elite lights.



STEP 9

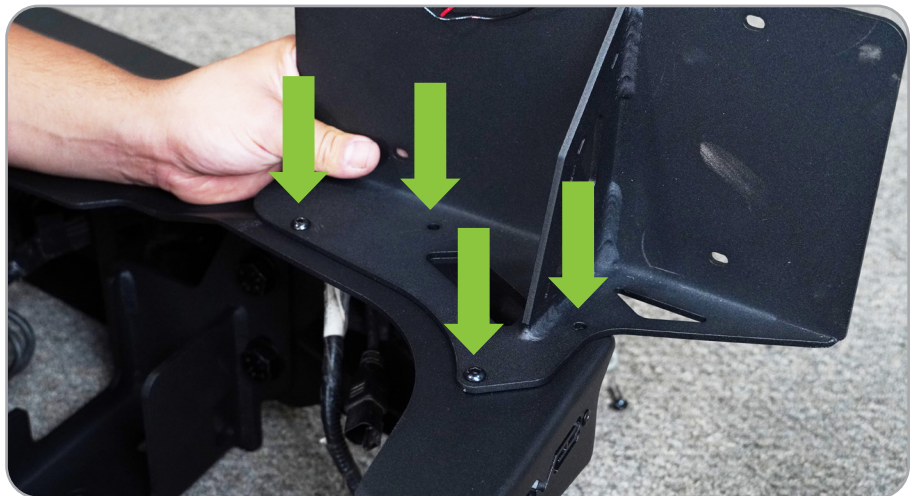
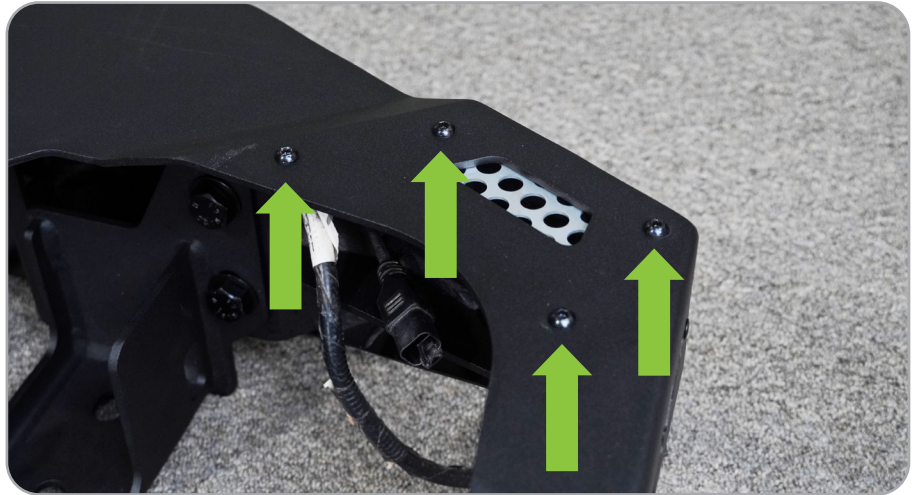
To wire up the license plate light you will need to cut off the factory connector and wire it to our new LED light, or you can opt to wire in a new plug for easy on and off connection.



INSTALLATION MANUAL

STEP 10

To install the license plate bracket, using a #4 allen head, remove the four screws holding on the driver side mesh. Place the bracket into place and reuse the hardware to secure the bracket to the bumper. The mesh can be removed or reused with the bracket based on your preference.



INSTALLATION MANUAL

STEP 11

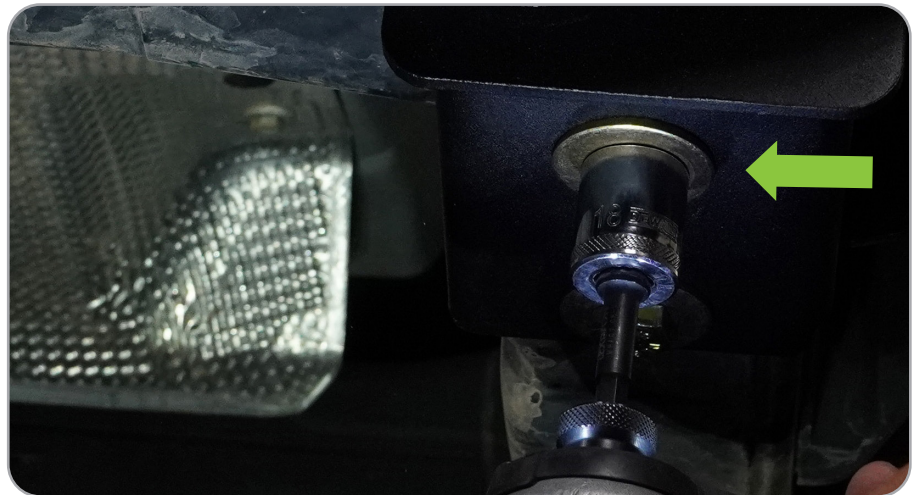
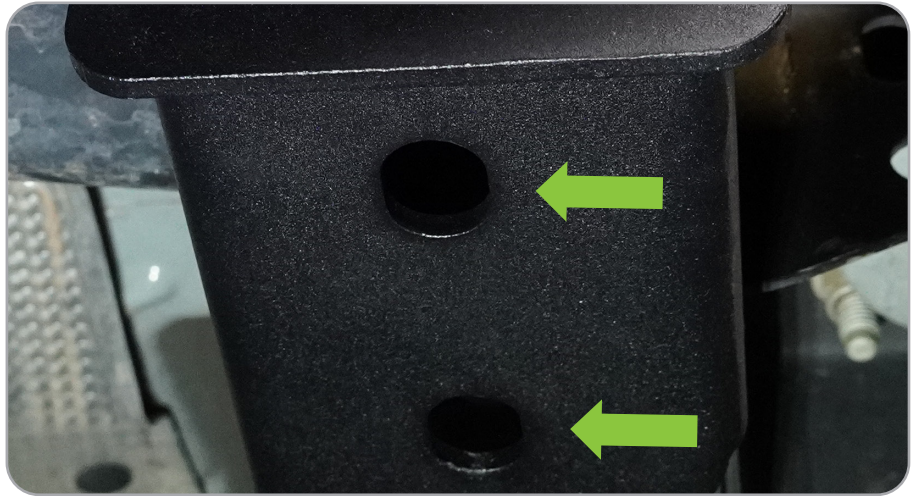
Using a 21mm socket and 21mm wrench, use the M14 hardware to loosely install the main bumper bracket to the bumper.



INSTALLATION MANUAL

STEP 12

With assistance, lift the bumper to the truck and reusing the factory M12 bolts, install the lower four bolts tightening to 70 ft lbs.



STEP 13

After the bumper is aligned with the vehicle, tighten all six M14 bracket bolts to the bumper to 70 ft lbs.



INSTALLATION MANUAL

STEP 14

Plug in connectors on both sides of the bumper and check the function of the license plate light and sensors.



STEP 15

Double check all hardware and connections. Wire rear lights to your preference.

