



# FITTING INSTRUCTIONS

Part Number: **4480020**  
Product Description: **ROCK SLIDERS**  
Suited to vehicle/s: **2021 FORD BRONCO 2D**

## WARNING

### NOTE THE FOLLOWING:

- ◆ This product must be installed exactly as per these instructions using only the hardware supplied.
- ◆ Do not use this product for any vehicle make or model, other than those specified by ARB.
- ◆ This product or its fixing must not be modified in any way.
- ◆ The installation of this product may require the use of specialized tools and/or techniques.
- ◆ It is recommended that this product is only installed by trained personnel.
- ◆ These instructions are correct as at the publication date. ARB Corporation Ltd. cannot be held responsible for the impact of any changes subsequently made by the vehicle manufacturer.
- ◆ During installation, it is the duty of the installer to check correct operation/clearances of all components.
- ◆ Work safely at all times.
- ◆ Unless otherwise instructed, tighten fasteners to specified torque.

## ARB 4x4 ACCESSORIES

### Corporate Head Office

42-44 Garden St  
Kilsyth, Victoria  
AUSTRALIA 3137

Tel: +61 (3) 9761 6622  
Fax: +61 (3) 9761 6807

Australian enquiries  
North & South American enquiries  
Other international enquiries

sales@arb.com.au  
sales@arb.com.au  
exports@arb.com.au

[www.arb.com.au](http://www.arb.com.au)

# GENERAL CARE AND MAINTENANCE



By choosing an ARB Rock Slider, you have bought a product that is one of the most sought after 4WD products in the world. Your Rock Slider is a properly engineered, reliable, quality accessory that represents excellent value. To keep your Rock Slider in original condition it is important to care and maintain it following these recommendations:

- It is recommended that following exposure to salt, mud, sand or other contaminants exposed surfaces should be thoroughly cleaned with wash and wax type suds solution.
- As part of any Pre Trip Preparation, or on an annual basis, it is recommended that a thorough visual inspection of the step and rail and surrounding components is carried out, making sure that all bolts are torqued to the correct specification. Also check that nearby wiring and plumbing are free of damage. Replace any components as necessary. This service can be performed by your local authorized ARB Stockist.

## REQUIRED TOOLS FOR FITMENT OF PRODUCT:

METRIC SOCKET SET	ALLEN KEY SET
TORQUE WRENCH 9-77Nm	PROTECTIVE FILM
IMPACT WRENCH	LIFT TABLE
ANGLED WRENCH	

## HAVE AVAILABLE THESE SAFETY ITEMS WHEN FITTING PRODUCT:

Protective eyewear		Hearing protection	
--------------------	---	--------------------	---

**NOTE: 'WARNING' notes in the fitting procedure relate to OHS situations, where to avoid a potentially hazardous situation it is suggested that protective safety gear be worn or a safe work procedure be employed. If these notes and warnings are not heeded, injury may result.**

## FASTENER TORQUE SETTINGS:

SIZE	Torque Nm	Torque lbft
M6	9Nm	7lbft
M8	22Nm	16lbft
M10	44Nm	32lbft
M12 U-BOLTS	44Nm	32lbft
M12	77Nm	57lbft

PARTS LISTING			
APPLICATION.	PART NO.	QTY	DESCRIPTION
FITTING KIT BOXED	4655122	1	WELD ASM ROCK-S LH SUIT BRONCO
	4655123	1	WELD ASM ROCK-S RH SUIT BRONCO
FITTING KIT BAGGED	4581011	8	WASHER FLAT M12x27x4   ZP
	4584377	4	WASHER FLAT M12x30x5   ZNS480
	6151046	1	WASHER FLAT M6   ZNS480
	6151207	1	BOLT HXHD M6x1.0x25   PC8.8 TZP480
	6151255	4	SCREW HXHD M12x1.75x40   PC8.8 ZP
	6151377	2	BOLT U M12x1.75x(175x120)   PC8.8 TZP
	6151574	4	NUT HEX NYLOC M12x1.75   TZP480
	6151428	4	NUT FLANGE M12x1.75   PC8.8 SERRATED
	6151596	1	P CLIP 19MM
	6151715	1	NUT CAGED M6 3.6-4.5   836-D
	665051	2	TAPE RIB WINDOW @ 500MM
	6821178	8	CABLE TIE4.8 X 200MM

## FITTING PROCEDURE

**IMPORTANT NOTE:** These instructions apply to FORD BRONCO.



1. If fitted, remove the factory side steps.



2. On both LH & RH side, remove two nuts off of front body mount.
3. If packer plate is installed from factory re-fit when installing sliders.



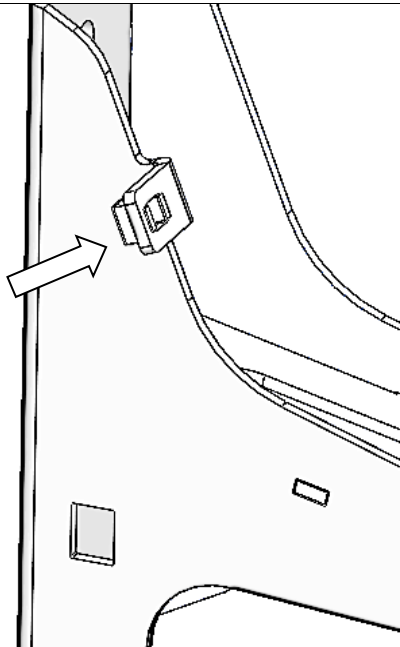
4. If factory mudflaps are installed, remove these with the 2 clips and 4 fasteners. After removing the mudflaps, re-insert the screws and plastic fasteners.
5. In the rear, remove the rear plastic trim. This is installed with 4 small screws. After removing the plastic piece replace the screws.



6. Using a clip removal tool, loosen the wiring harness from the length of the left side frame rail. On the inboard side of the left frame rail, also disconnect the brake lines in the rear.



7.



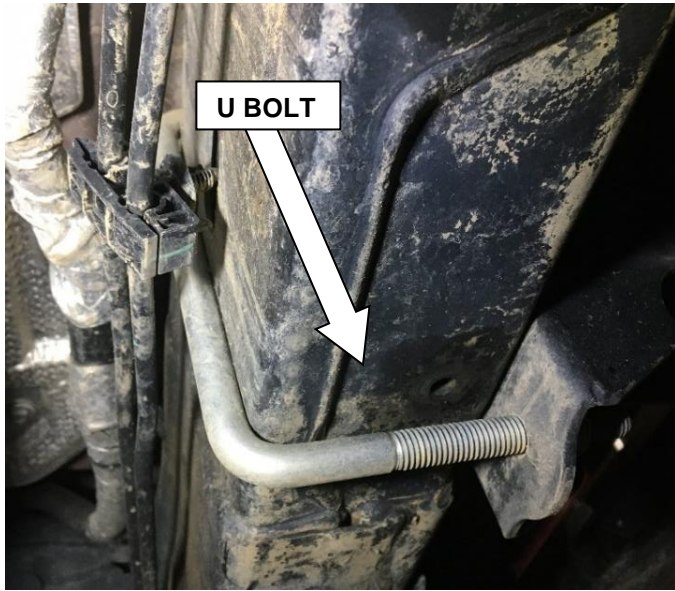
8. Insert M6 cage nut into rear mount of left slider.



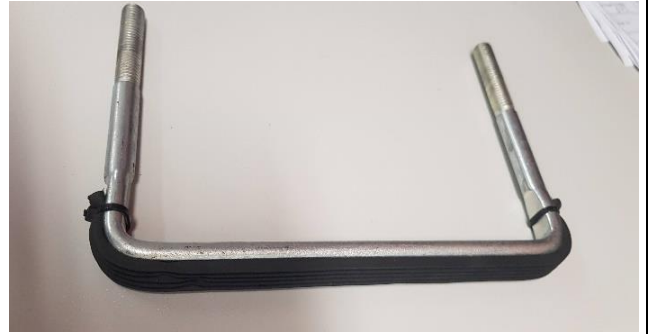
9. Using a lift table or a friend, lift the LH slider into position and fasten the two body mount nuts onto the studs. Leave loose for now.



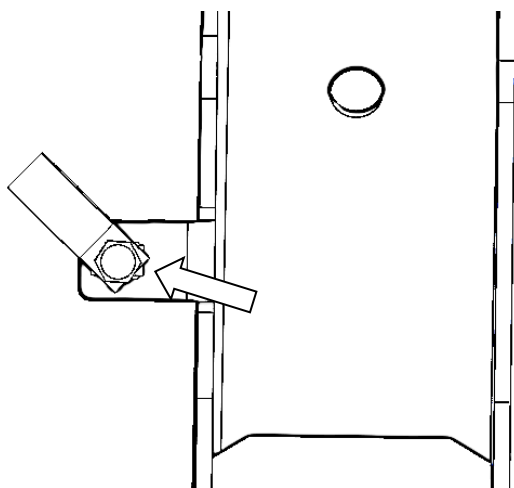





10. Use the rubber tape to cover the back of 2 U-bolts and secure the ends with cable ties as shown.
11. Moving to the rear LH mount, slide one of the U-bolts under the brake lines and over the frame.

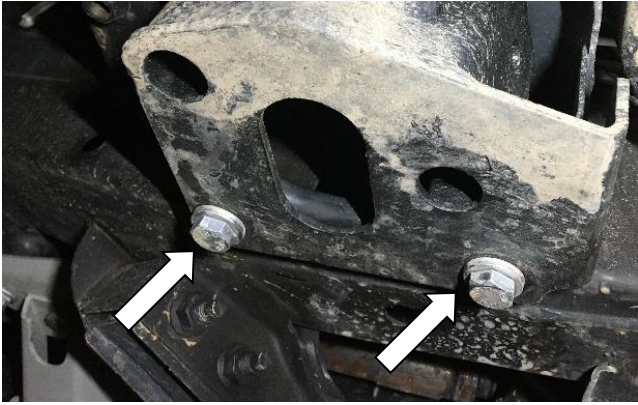


12. Using 2x M12 nyloc nuts and washers, fasten the slider to the U-bolt. Leave loose for now.



13. Using P-Clip provided, attach the wiring harness with an M6x25 bolt and washer to the rear mount cage nut, so that the harness will not rub.

 M6 - 9 Nm.



14. Insert 2x M12x40 bolts, washers, and flange nuts into the lower front mount. Use an angled wrench to reach the inner nuts.
15. If alignment is needed front to rear, the slider can be adjusted with packers in the front or moving the rear vertically. The alignment with the sill can be measured off the bottom of the door with the door slightly open. Clearance should be 10-15mm OA.

To adjust the front, the slider needs to be removed and 4mm packers can be used underneath the upper area of the front mount.




16. Moving to the RHS, if the vehicle is equipped with a gas tank skid, loosen all the bolts holding it on. Remove the three outboard bolts on the frame while installing the slider, these will be reinstalled later.







17. Insert the U-bolt between the frame and the gas tank with the threaded portion pointing towards the front of the vehicle.
18. Repeat Steps 9, 14, and 15 on the right side.
19. Re-install the three gas tank skid bolts removed earlier and torque.

 M8 - 22 Nm

20. Torque all bolts on the sliders and chassis.

 M8 - 22 Nm.  M10 - 44 Nm.

 M12 - 77 Nm.  M12 Ubolts - 44 Nm.

## FITTED PRODUCT

