



INSTALLATION MANUAL

VICOWL

PRODUCT NUMBER: VC5200

APPLICATION: 2021 FORD BRONCO



IMPORTANT SAFETY GUIDE | Your safety and the safety of others is very important.

In order to help you make informed decisions about safety, we have provided the following warnings, safety precautions, installation instructions, and other important information to alert you to potential hazards that could hurt you or others.

Please do a job safety analysis before each task to identify potential hazards for your situation and remove/protect against them. Use own good judgment and take your time.

Check packaged materials immediately upon arrival to ensure that all listed parts are included and undamaged.

Read and understand all warnings, safety precautions, and instructions before installing this product.

SENSORS FIELD OF VIEW MAY BE ALTERED WITH USE OF THE REPLACEMENT BUMPER.

WARNINGS

- Failure to observe the following warnings and instructions provided in this manual could lead to severe injury and/or death.
- For professional installation only. Careless installation and/or operation can result in serious injury, death, and/or equipment damage. All liability for installation and use rests with the user or consumer.
- Fab Fours, Inc. only approves installing this product according to these written instructions with the hardware provided. Failure to install according to these instructions will invalidate the warranty. This includes, but is not limited to, using alternative installation methods, hardware, or materials.
- This product is for off road use only.

SAFETY PRECAUTIONS

- Always remove jewelry and wear eye protection.
- Always use extreme caution when jacking up a vehicle for work. Set emergency brake and use tire blocks. Locate and use the vehicle manufacturers designated lifting points. Use jack stands.
- Always use appropriate and adequate care in lifting components into place.
- Always ensure components will remain secure during installation and operation.
- Always wear safety glasses when installing this kit. A drilling operation will cause flying metal chips. Flying chips can cause serious eye injury.
- Always use extreme caution when drilling a vehicle. Always disconnect power before welding. Thoroughly inspect the area to be drilled (on both sides of material when possible) prior to drilling, and relocate any objects that may be damaged.
- Always use extreme caution when welding a vehicle. Thoroughly inspect the area to be welded (on both sides of material when possible) prior to welding, and relocate any objects that may be a fire hazard. When welding in a cab, make sure the interior surfaces are covered (e.g., welding blanket) and a fire extinguisher is at hand.
- Always use extreme caution when cutting and trimming during fitting.
- Always tighten all nuts and bolts securely per installation instructions.
- Always route electrical cables carefully. Avoid moving parts, components that become hot, and rough or sharp edges.
- Always insulate and protect all exposed wiring and electrical terminals.
- Perform regular inspections and maintenance on mounts and hardware.

TABLE OF CONTENTS

- 2 SAFETY / DISCLAIMER
- 3 TABLE OF CONTENTS
- 4 A MESSAGE FROM THE OWNER
- 5 GETTING STARTED
- 6 PROVIDED MATERIAL
- 7 DISASSEMBLY
- 9 INSTALLATION
- 12 CONTACT

A MESSAGE FROM THE OWNER



Fab Fours' was born out of a passion for customizing vehicles and a love of the outdoors. Our engineering team uses the latest 3D design software to turn new product ideas into reality. In our factory, designs come to life with the combination of cutting edge technology for metal cutting and forming and an American workforce that puts its' heart and pride into every product.

From design and manufacturing, to quality and delivery, Fab Fours' mission is to be the market leader for steel truck and jeep accessories. We make sure a quality product is delivered on time, more than expected, better than expected to our customers.

Enjoy your new Fab Fours product. Welcome to the family!

Greg Higgs

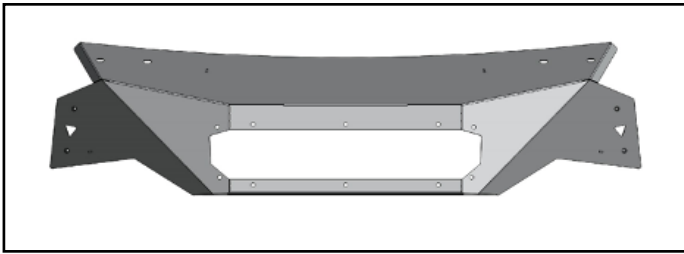
FOUNDER, FAB FOURS

GETTING STARTED

Before you begin the installation process of your new Fab Fours product, we suggest laying out all materials and parts on a pad or protective surface.

Failure to fully account for all components before beginning installation may leave vehicle immobile until part is acquired. Refer to the next pages as an inventory check.

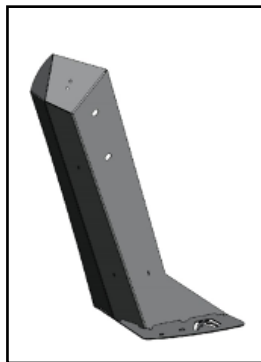
PROVIDED MATERIALS



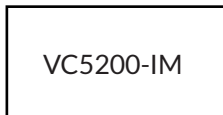
22557 - Vicowl Visor



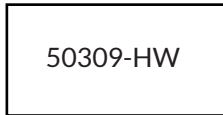
22558 - Driver side arm



22559 - Passenger side arm



VC5200-IM



50309-HW



22560 -
Driver side
windshield bracket



22561 -
Passenger side
windshield bracket



21518-02 - Light insert

HARDWARE KIT | VC5200

FAB FOURS IDENTIFICATION	COMPONENT DESCRIPTION	QTY
50309-HW	5/16-18 X 1, 18/8 SS, Button Head Cap Screw	18
50309-HW	5/16-18, 18/8 SS, Nylock Hex Nut	10
50309-HW	5/16,18/8 SS, Flat Washer	10
50309-HW	5/16", 18/8 SS, Bonded Sealing Washer	18

TOOLS REQUIRED

- Panel Pry Tool
- 10mm Socket Wrench
- 1/2" Socket Wrench
- T25 Torx Plus Bit
- T30 Torx Plus Bit
- 3/16" Allen Wrench

ASSISTANCE

We recommend two people perform the installation as items are heavy and may need to be held in place while installing.

ORGANIZATION

Disassemble the vehicle where you can catalog and store everything. We suggest labeling and bagging all the OEM bolts when removing from the vehicle. Failure to keep track of parts could lead to an inability to properly reinstall components.

ASSISTANCE

This manual shows the six sensor configuration for illustration purposes but your specific installation may vary.

1. Remove the covers on the windshield accessory mounts by prying away the top. Figure 1



Figure 1

2. Using a 10mm socket wrench, remove the two (2) nuts on each of the two (2) accessory mounts across the windshield. Then remove the black plastic cover retainer. Figure 2



Figure 2

3. Using a T25 Torx Plus bit, remove the outer pillar accessory mounting screw on each side of the vehicle. Figure 3

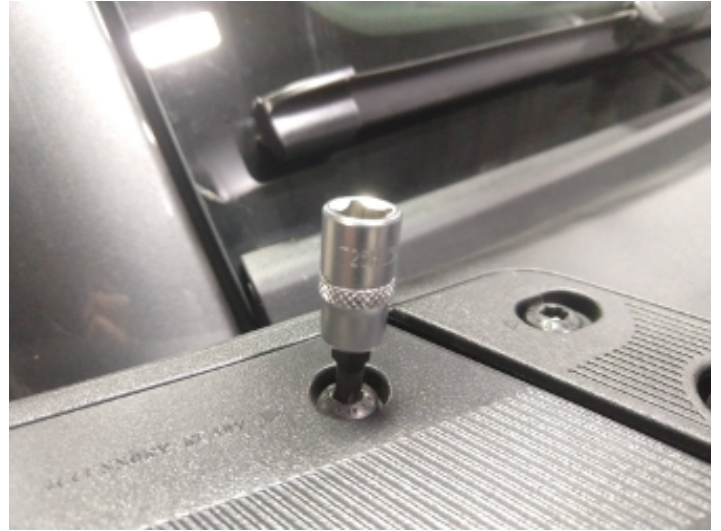


Figure 3

4. Using a T30 Torx Plus bit, remove the inner pillar accessory mounting screw on each side of the vehicle. Figure 4



Figure 4

5. Begin assembly of the ViCowl by loosely attaching the two (2) provided arms (PN: 22558 & 22559) to the visor (PN: 22557) using four (4) of the provided 5/16" button head cap screws and bonded sealing washers. Figure 5

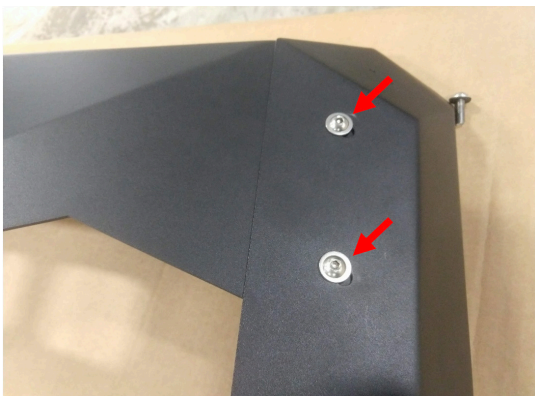


Figure 5

6. Install either the provided insert part (PN: 21518-02) light mounting inserts using ten (10) of the provided 5/16" button head cap screws, bonded sealing washers, flat washers, and nylock nuts with a 3/16" allen wrench and 1/2" socket wrench. Figure 6&7

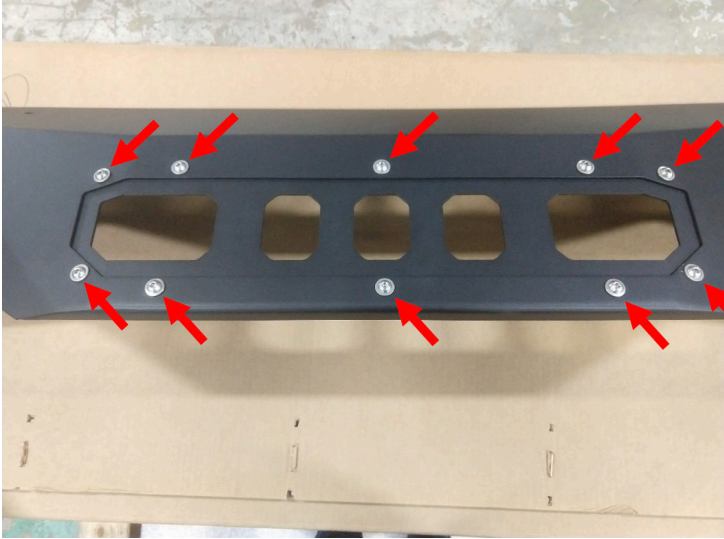


Figure 6



Figure 7

7. Install the provided bracket (PN: 22560) on to the driver's side windshield accessory mount using the OEM nuts and 10mm socket wrench. Figure 8



Figure 8

9. Install the provided bracket (PN: 22561) on to the passenger's side windshield accessory mount using the OEM nuts and 10mm socket wrench. Figure 9



Figure 9

10. With assistance, place the assembled ViCowl onto the vehicle. Reinstall the four (4) OEM screws at the base of the ViCowl arms to the pillar accessory mounts using a T25 Torx Plus bit for the outer two (2) and a T30 Torx Plus bit for the inner two (2). Figure 10



Figure 10

11. Using a 3/16" allen wrench and the four (4) 5/16" button head cap screws and bonded sealing washers attach the visor (PN: 22557) to the previously installed windshield brackets (PN: 22560 & 22561).
Figure 11

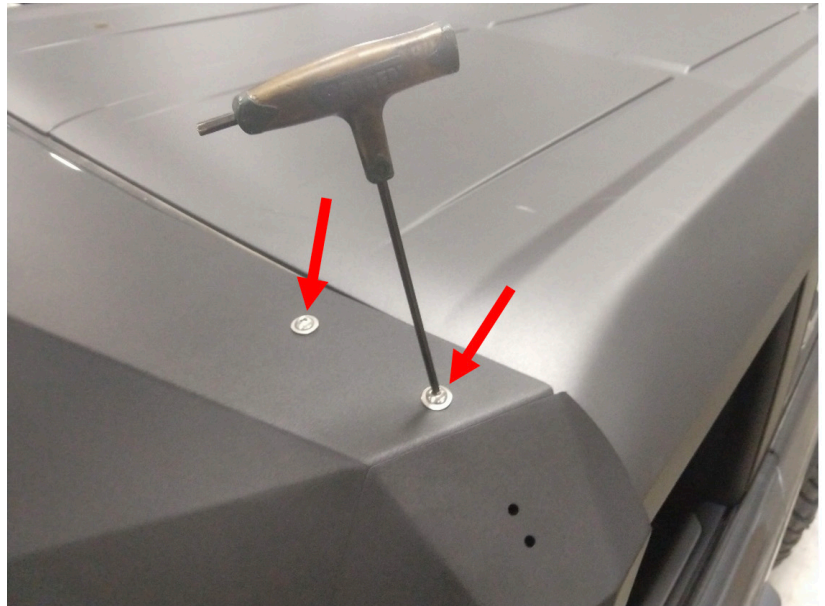


Figure 11

12. Using a 3/16" allen wrench, tighten the previously installed hardware attaching the arms to the visor. Figure 12

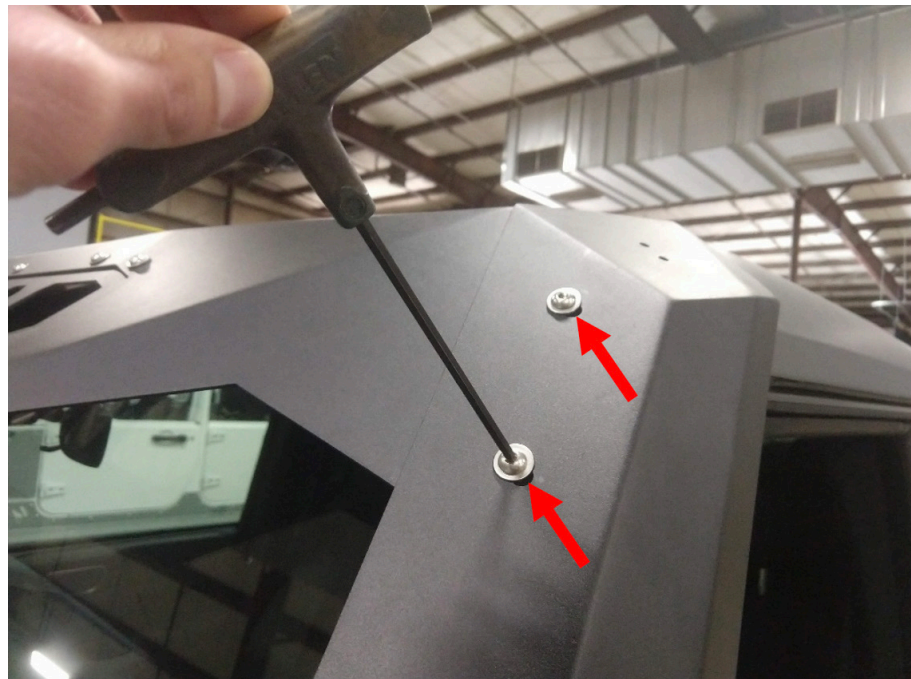


Figure 12

CONTACT INFORMATION

**FAB FOURS INC.
2213 INDUSTRIAL PARK ROAD
LANCASTER, SC 29720**

PHONE: (866) 385-1905

FAX: 970-385-1914

EMAIL: SUPPORT@FABFOURS.COM

FABFOURS.COM



**“IF YOU’RE LOOKING FOR MORE OF THE SAME,
THEN YOU’VE COME TO THE WRONG PLACE.”**

- GREG HIGGS

