

## HONDA 2019 50" Single Row Light Bar Cage Mount

**Thank you for choosing Rough Country for all your vehicle needs.**

Please read instructions before beginning installation. Check the kit hardware against the kit contents shown below. Be sure you have all needed parts and know where they go.

If question exist, please call us @1-800-222-7023. We will be happy to answer any questions concerning this product.

Check all fasteners for proper torque. Check to ensure for adequate clearance between all components.

Periodically check all hardware for tightness.

### KIT CONTENTS:

50" Single Row Light Bar x1  
Light Mount Spacers x4  
Driver Side Bracket x1  
Pass Side Bracket x1

### TOOLS NEEDED:

18mm Wrench and Socket  
19mm Wrench and Socket

### HARDWARE INCLUDED:

12mm-1.75 x 45mm Hex Head Bolts x4  
12mm Flat Washer x4  
12mm-1.75 Nylock Nuts x4

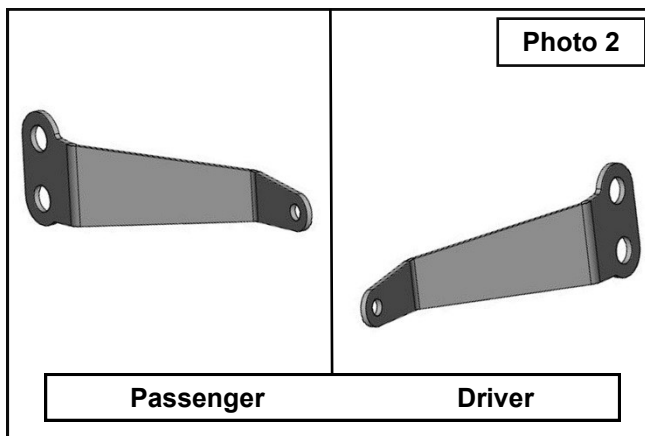


### Torque Specs:

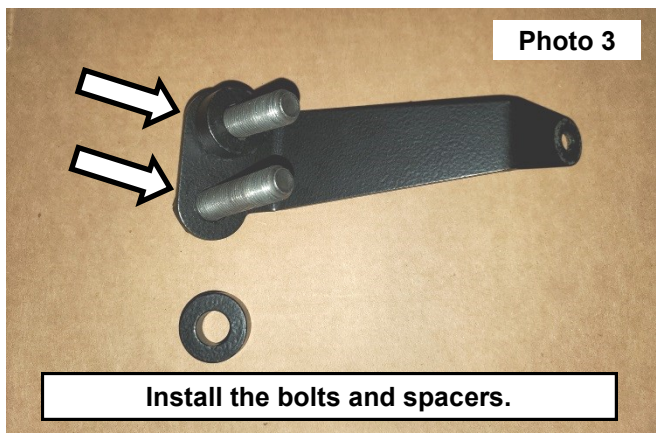
Size	Grade 5	Grade 8	Size	Class 8.8	Class 10.9
5/16"	15 ft/lbs	20ft/lbs	6MM	5ft/lbs	9ft/lbs
3/8"	30 ft/lbs	35ft/lbs	8MM	18ft/lbs	23ft/lbs
7/16"	45 ft/lbs	60ft/lbs	10MM	32ft/lbs	45ft/lbs
1/2"	65 ft/lbs	90ft/lbs	12MM	55ft/lbs	75ft/lbs
9/16"	95 ft/lbs	130ft/lbs	14MM	85ft/lbs	120ft/lbs
5/8"	135ft/lbs	175ft/lbs	16MM	130ft/lbs	165ft/lbs
3/4"	185ft/lbs	280ft/lbs	18MM	170ft/lbs	240ft/lbs

## INSTALLATION INSTRUCTONS

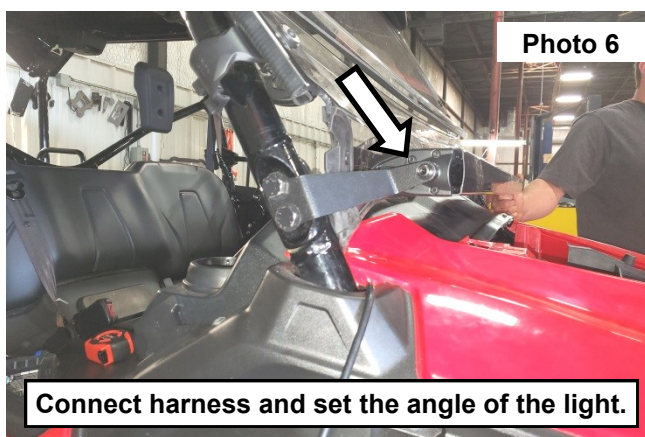
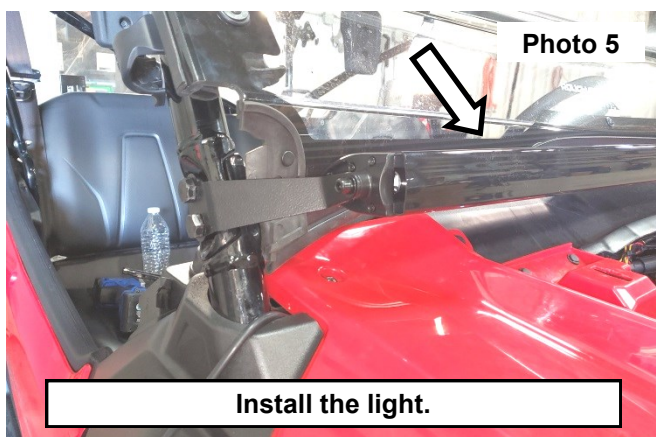
1. Locate the 2 bolts at the bottom of the cage and remove using a 19mm socket. **See Photo 1.**
2. Locate the Driver and Passenger side brackets shown in **Photo 2.**



3. *Photos shown on passenger side.*
4. Install (2) 12mm-1.75 x 45mm hex head bolts into the Passenger side bracket. Then install (2) spacers onto the inside of the bracket. **See Photo 3.**
5. Install the light bracket, spacers and bolts onto the mounting holes in the cage. Secure using (2) flat washers and (2) 12mm-1.75 nylock nuts. Tighten using a 19mm wrench on the bolt and a 18mm socket on the nut. **See Photo 4.**



6. Repeat the installation of the mount on the opposite side.
7. Install the wiring harness supplied in the 50" light bar kit onto the utv using the corresponding instruction sheet.
8. Install the 50" light bar onto the light mounts using the supplied hardware in the mount kit. Connect the wiring harness to the light, set the light to the desired angle and tighten using the supplied allen wrench. **See Photos 5 and 6.**



By purchasing any item sold by Rough Country, LLC, the buyer expressly warrants that he/she is in compliance with all applicable, State, and Local laws and regulations regarding the purchase, ownership, and use of the item. It shall be the buyers responsibility to comply with all Federal, State and Local laws governing the sales of any items listed, illustrated or sold. The buyer expressly agrees to indemnify and hold harmless Rough Country, LLC for all claims resulting directly or indirectly from the purchase, ownership, or use of the items.

