



## FORD 2021 Bronco Rear Storage Box

Thank you for choosing Rough Country for all your vehicle needs.

Please read instructions before beginning installation. Check the kit hardware against the kit contents shown below. Be sure you have all needed parts and know where they go.

If question exist, please call us @1-800-222-7023. We will be happy to answer any questions concerning this product. Check all fasteners for proper torque. Check to ensure for adequate clearance between all components. Periodically check all hardware for tightness.

**Kit Contents:**

- Storage Box x1
- Storage Box Legs x2

**Tools Needed:**

- 10mm Socket/Wrench
- 13mm Socket/Wrench
- 9/16" (14mm) Socket/Wrench

**Hardware Included:**

- 3/8" x 1" Bolts x4
- 3/8" Flat Washers x4
- 3/8" Flange Nuts x4
- 8mm x 30mm Bolts x4
- 8mm Flat Washers x4
- 1/2" x 3/4" x 1/4" Spacers x4

- (Not Used in Bronco)
- 8mm x 55mm Bolts x4
  - 8mm Flat Washers x8
  - Puck Spacers x4



**Torque Specs:**

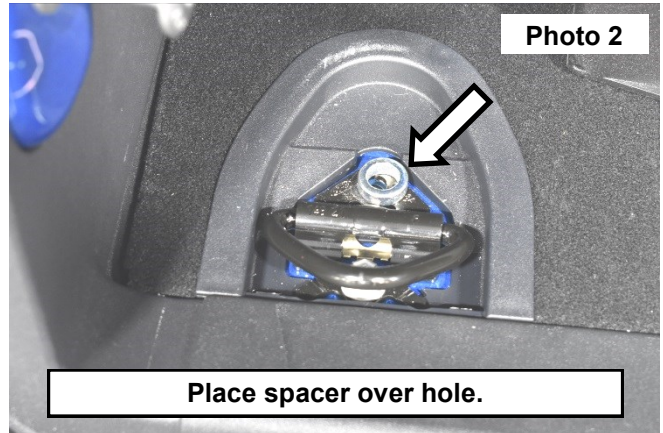
Size	Grade 5	Grade 8	Size	Class 8.8	Class 10.9
5/16"	15 ft/lbs	20ft/lbs	6MM	5ft/lbs	9ft/lbs
3/8"	30 ft/lbs	35ft/lbs	8MM	18ft/lbs	23ft/lbs
7/16"	45 ft/lbs	60ft/lbs	10MM	32ft/lbs	45ft/lbs
1/2"	65 ft/lbs	90ft/lbs	12MM	55ft/lbs	75ft/lbs
9/16"	95 ft/lbs	130ft/lbs	14MM	85ft/lbs	120ft/lbs
5/8"	135ft/lbs	175ft/lbs	16MM	130ft/lbs	165ft/lbs
3/4"	185ft/lbs	280ft/lbs	18MM	170ft/lbs	240ft/lbs



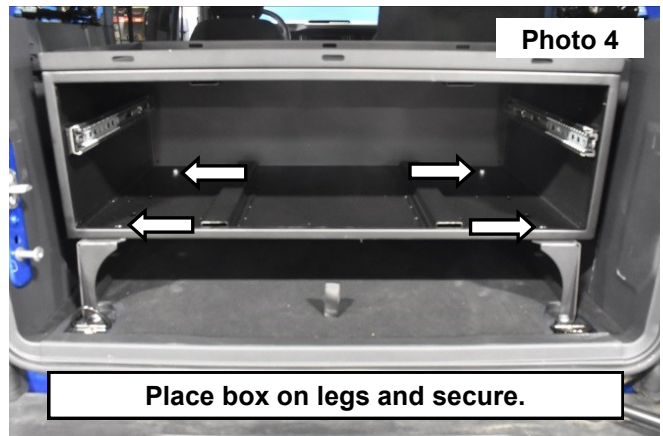
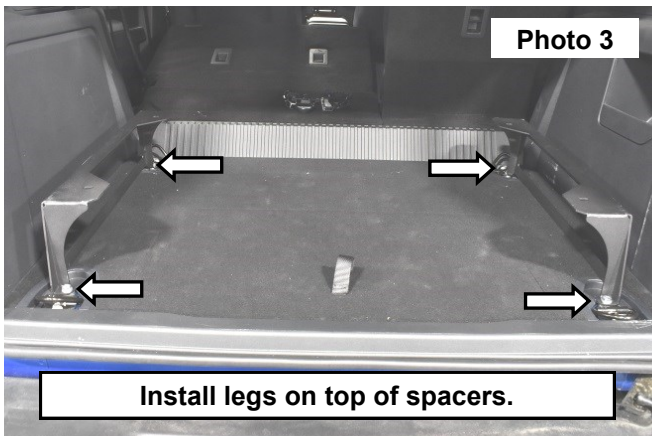
## INSTALLATION INSTRUCTIONS

**▲ NOTICE** The hardware and instructions that came in the storage box will not be used on the Bronco. Use the hardware that came with the storage box legs.

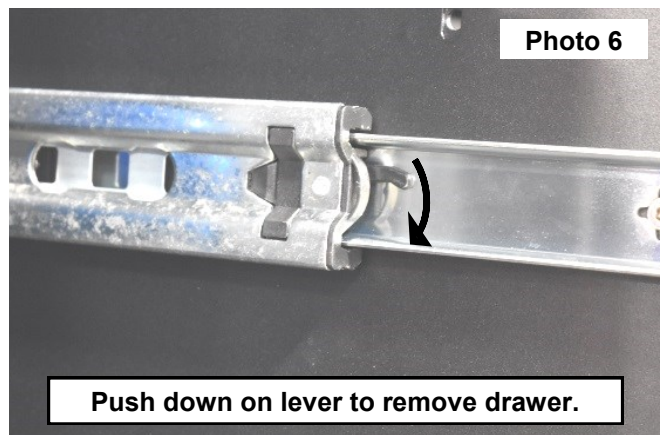
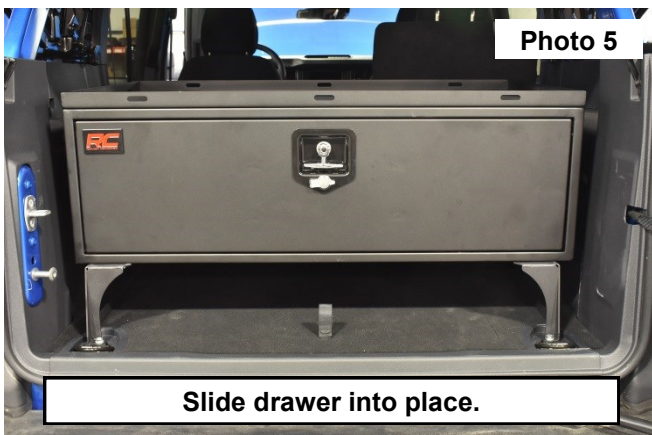
1. Remove the 4 tie down hoop covers and remove the interior bolts using a 10mm socket/wrench. **See Photo 1.**
2. Place the supplied spacers over the holes and install the legs on top of the spacers using the supplied 8mm x 30mm bolts and washers. Tighten using a 13mm socket/wrench. **See Photo 2 and Photo 3.**



3. Place the storage box on the legs and install the supplied 3/8" hardware using two 9/16" (14mm) socket/wrenches. **See Photo 4.**



4. Slide the drawer into place. **See Photo 5.**
5. To remove drawer, push down on the black lever in the rails. **See Photo 6.**



By purchasing any item sold by Rough Country, LLC, the buyer expressly warrants that he/she is in compliance with all applicable, State, and Local laws and regulations regarding the purchase, ownership, and use of the item. It shall be the buyers responsibility to comply with all Federal, State and Local laws governing the sales of any items listed, illustrated or sold. The buyer expressly agrees to indemnify and hold harmless Rough Country, LLC for all claims resulting directly or indirectly from the purchase, ownership, or use of the items.

