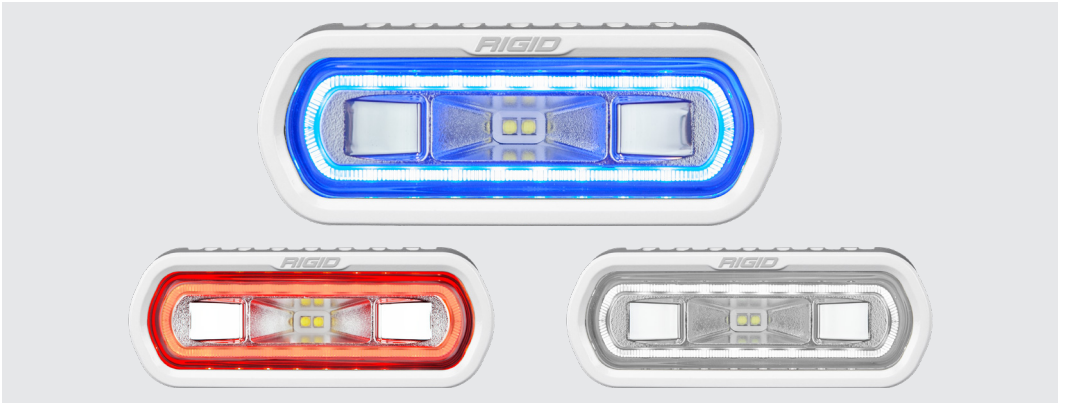




## INSTALLATION INSTRUCTIONS

# SR-L SERIES MARINE SPREADER



**\*THESE INSTRUCTIONS ARE FOR THE FOLLOWING LIGHTS:  
SR-L SERIES MARINE SPREADERS**

### **IMPORTANT**

**THANK YOU FOR PURCHASING RIGID INDUSTRIES' PRODUCTS FOR YOUR VEHICLE.**  
Please read through all of these Instructions and tips before proceeding with the installation.  
We do our best to provide a simple installation process for all applications however  
a professional installation is always recommended.

**Always disconnect any power sources connected to your vehicle  
before servicing fuses or electrical systems.**

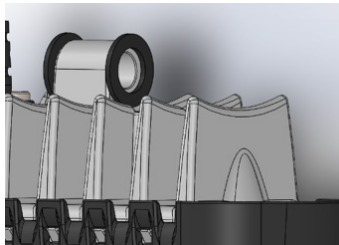
# SURFACE MOUNT INSTRUCTIONS

## STEP 1

Align nylon washers with mount hole on the backside of the light as shown .

*See Figure 1*

FIGURE 1

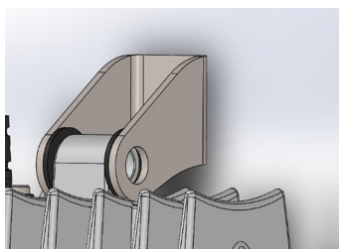


## STEP 2

Align bracket with nylon washers and mounting hole as shown.

*See Figure 2*

FIGURE 2

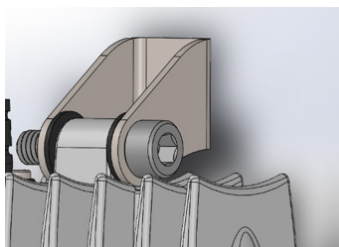


## STEP 3

Insert the provided bolt as shown with the head of the bolt opposite the wire ingress as shown.

*See Figure 3*

FIGURE 3

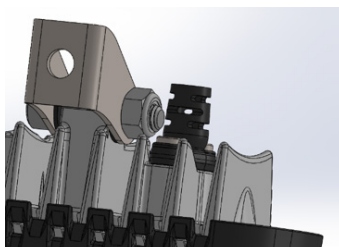


## STEP 4

Fasten nylock nut to the bolt as shown.

*See Figure 4*

FIGURE 4

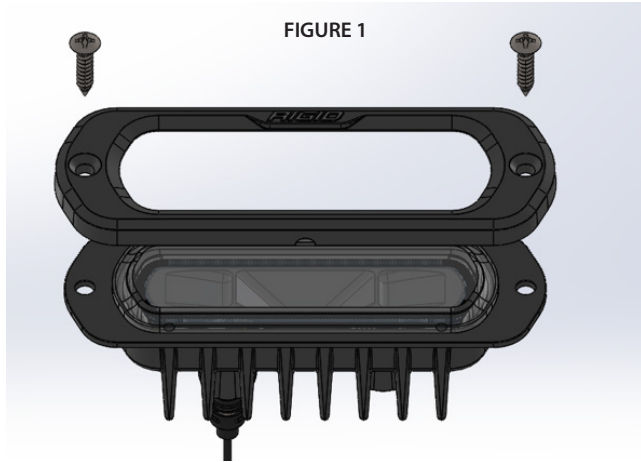


# FLUSH MOUNT INSTRUCTIONS

## STEP 1

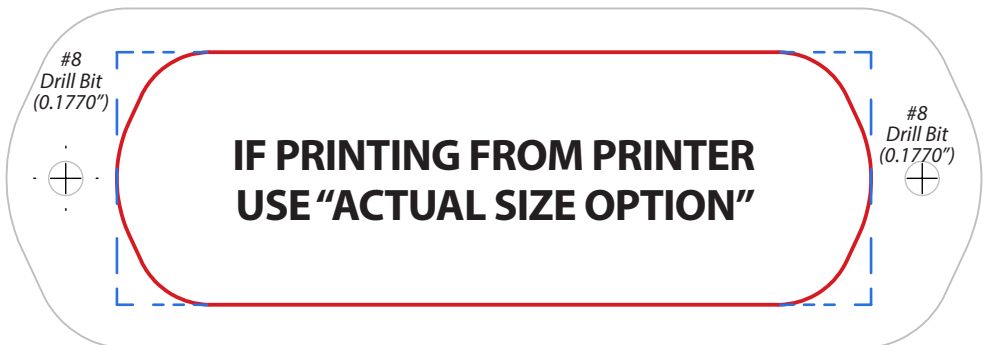
Install flush mount bezel using the provided hardware. Use the template as a guide to cut the hole for the light.

See Figure 1

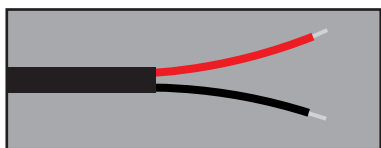


## SR-L SERIES SPREADER FLUSH MOUNT TEMPLATE

- 1) Depending on available tools, either cut to the solid red line or the dashed blue line.
- 2) Ensure your flat surface allows for the depth of the light.
- 3) Tape the template, or secure by other means, to your surface.
- 4) Mark both drill holes and center area of template with a marker.
- 5) Remove your template and double check your markings by placing bezel over area.
- 6) After complete check is done to ensure proper alignment, remove marked surface material by using appropriate tools.
- 7) Remove or file down rough edges and excess trimmings to allow light to be placed correctly.
- 9) Insert 2 bolts into light and through the mounting surface, tighten nuts to bolts evenly.
- 10) Wire light according to provided instructions.



## WIRING INSTRUCTIONS



RED WIRE = POWER

BLACK WIRE = GROUND

### IMPORTANT

**Always disconnect the vehicle battery terminals before servicing the electrical system**

1. If connecting to existing wiring, make sure to use appropriate fusing and wire gauge. Be sure to use heat shrink tubing on all connections to ensure a weather tight seal.
2. Be aware of the current rating of your selected switch, if switch rating is less than the amperage required to power your light then a relay must be added in line to prevent failure of switch.
3. Use wire sheathing to protect the wire if routing through any metal surface or around any sharp edges.
4. Re-connect the negative battery terminal and fully tighten all mounting hardware. Test to verify functionality.

## FUNCTIONALITY

The SR-L Series Marine LED light bar has 3 modes: high power, low power, and halo only mode. To switch between these modes simply toggle the power on then off. Each toggle of the power will produce one of the three modes.

Note: When turned on, both high power and low power modes will slowly increase to full intensity over a period of about 4 seconds. This is intentional and allows the users eyes to adjust to the glare.

**Your installation is now complete.  
Welcome to the RIGID Nation!**

---

---

## WARRANTY INFORMATION

For warranty information, visit [www.rigidindustries.com/about/warranty](http://www.rigidindustries.com/about/warranty)

779 N Colorado St, Gilbert, AZ 85233 • 855-760-5337  
[www.rigidindustries.com](http://www.rigidindustries.com)

RIGID, SL-Series and Rigid Industries are registered and/or common law marks owned by JST Performance, LLC, a Delaware limited liability company d/b/a Rigid Industries.

11-13689-A