

ROUGH COUNTRY

SUSPENSION SYSTEMS®

RAM 2009-2018 & 19-20 1500 Classic AL2 Steps

Thank you for choosing Rough Country for all your vehicle needs.

Please read instructions before beginning installation. Check the kit hardware against the kit contents shown below. Be sure you have all needed parts and know where they go.

If question exist, please call us @1-800-222-7023. We will be happy to answer any questions concerning this product.

Check all fasteners for proper torque. Check to ensure for adequate clearance between all components.

Periodically check all hardware for tightness.

KIT CONTENTS:

Driver Side Step x1

Pass Side Step x1

TOOLS NEEDED:

13mm Wrench or Socket

9/16" Wrench or Socket

HARDWARE INCLUDED:

3/8-16 x 1-3/4" Barrel Nut Clip x14

3/8" Flat Washers x14

3/8-16 x 1-1/2 Hex Head Bolts x14

8mm-1.25 x 30mm Flange Bolt x12

8mm Flat Washer x12



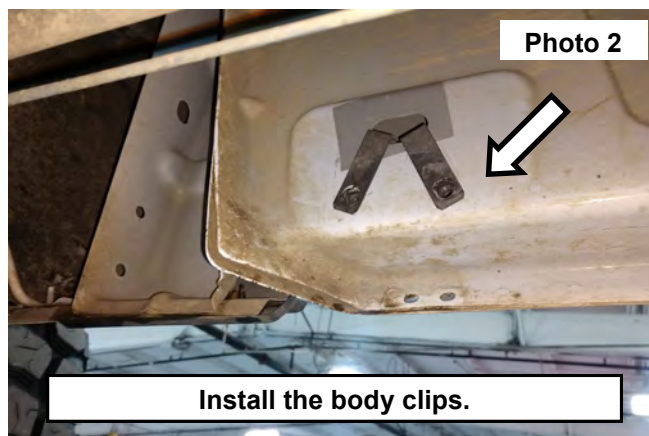
Torque Specs:

Size	Grade 5	Grade 8	Size	Class 8.8	Class 10.9
5/16"	15 ft/lbs	20ft/lbs	6MM	5ft/lbs	9ft/lbs
3/8"	30 ft/lbs	35ft/lbs	8MM	18ft/lbs	23ft/lbs
7/16"	45 ft/lbs	60ft/lbs	10MM	32ft/lbs	45ft/lbs
1/2"	65 ft/lbs	90ft/lbs	12MM	55ft/lbs	75ft/lbs
9/16"	95 ft/lbs	130ft/lbs	14MM	85ft/lbs	120ft/lbs
5/8"	135ft/lbs	175ft/lbs	16MM	130ft/lbs	165ft/lbs
3/4"	185ft/lbs	280ft/lbs	18MM	170ft/lbs	240ft/lbs

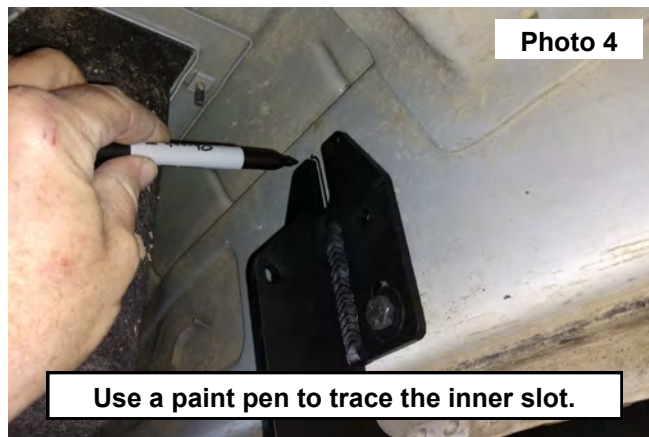


INSTALLATION INSTRUCTIONS

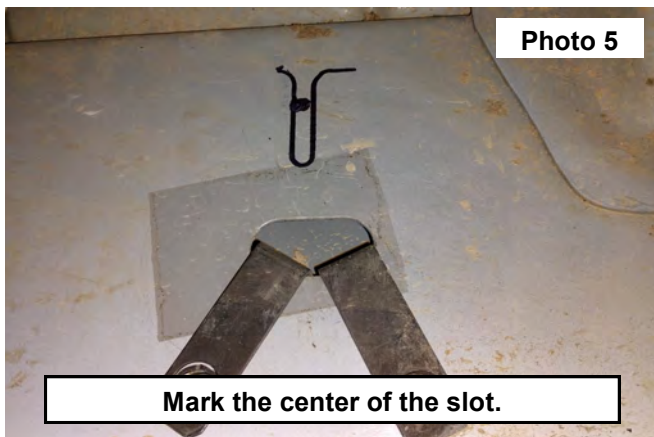
1. Install the body clips into the center rocker panel mount. **See Photo 1.**
2. Install the body clips into the rear of the rocker panel. **See Photo 2.**
3. **NOTE:** For 2009-15.5 models install the body clips in the front of the rocker panel and repeat steps below for installation of the upper clip.



4. Temporarily install the step to the center and rear mounts. Use in each mount (2) of the supplied 3/8-16 x 1-1/2 hex head bolts, (2) 3/8" flat washers securing the step to the body of the vehicle. **See Photo 3.**
5. Push the step up to the bottom of the slot in the step mount. Then using a paint pen trace the inner slot of the *FRONT* and *REAR* step mount. **See Photo 4.**



6. Using a paint pen to mark the center of the slot. **See Photo 5.**
7. Do not to exceed the length of the clip with the center of the hole that's marked. **See Photo 6.**



8. Using a Drill and a 1/2" drill bit, drill a hole into the center of the slot for the clip to be installed. **See Photo 7.**
9. Install the clip into the center and rear upper drilled hole. **See Photos 8 and 9.**



10. Install the step onto the vehicle. **See Photo 10.**



11. Secure using (2) of the supplied 3/8-16 x 1-1/2 hex head bolts, (2) 3/8" flat washers in each of the center and the rear mounts. (2009-15.5 models) will use the same hardware with the supplied body clips in the front mount. **See Photo 11.**
12. For 2015.5-18 models use the supplied 8mm x 30mm hex head bolts, (2) 8mm lock washers and (2) 8mm flat washers in the front mount. **See Photo 12.**
13. Adjust the step to the desired look on the vehicle and tighten the 3/8 hardware using a 9/16 socket. Tighten the 8mm hardware using a 13mm socket.



By purchasing any item sold by Rough Country, LLC, the buyer expressly warrants that he/she is in compliance with all applicable, State, and Local laws and regulations regarding the purchase, ownership, and use of the item. It shall be the buyers responsibility to comply with all Federal, State and Local laws governing the sales of any items listed, illustrated or sold. The buyer expressly agrees to indemnify and hold harmless Rough Country, LLC for all claims resulting directly or indirectly from the purchase, ownership, or use of the items.



