

Can-Am 2016-20 Defender Rear Panel

Thank you for choosing Rough Country for all your vehicle needs.

Please read instructions before beginning installation. Check the kit hardware against the kit contents shown below. Be sure you have all needed parts and know where they go.

If question exist, please call us @1-800-222-7023. We will be happy to answer any questions concerning this product. Check all fasteners for proper torque. Check to ensure for adequate clearance between all components.

Periodically check all hardware for tightness.

KIT CONTENTS:

Rear Panel x1

Seal x1

Plastic Retainer Pins x8

Straps x2



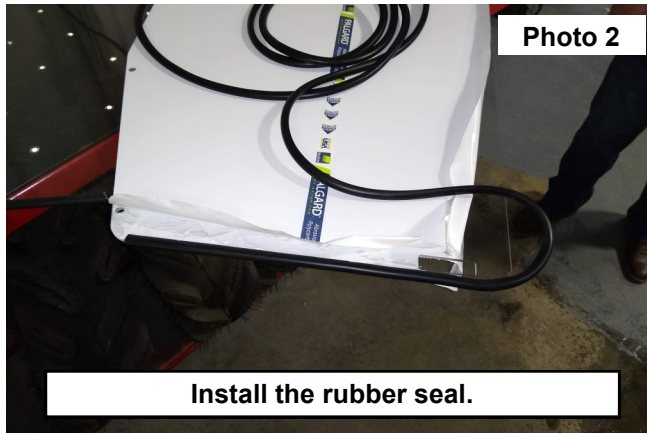
Torque Specs:

Size	Grade 5	Grade 8	Size	Class 8.8	Class 10.9
5/16"	15 ft/lbs	20ft/lbs	6MM	5ft/lbs	9ft/lbs
3/8"	30 ft/lbs	35ft/lbs	8MM	18ft/lbs	23ft/lbs
7/16"	45 ft/lbs	60ft/lbs	10MM	32ft/lbs	45ft/lbs
1/2"	65 ft/lbs	90ft/lbs	12MM	55ft/lbs	75ft/lbs
9/16"	95 ft/lbs	130ft/lbs	14MM	85ft/lbs	120ft/lbs
5/8"	135ft/lbs	175ft/lbs	16MM	130ft/lbs	165ft/lbs
3/4"	185ft/lbs	280ft/lbs	18MM	170ft/lbs	240ft/lbs

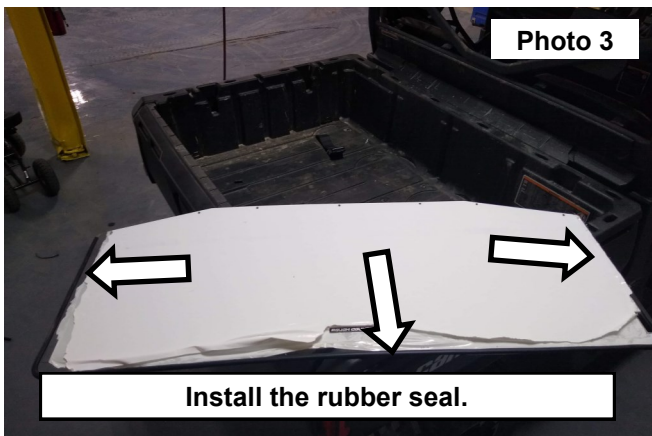


INSTALLATION INSTRUCTONS

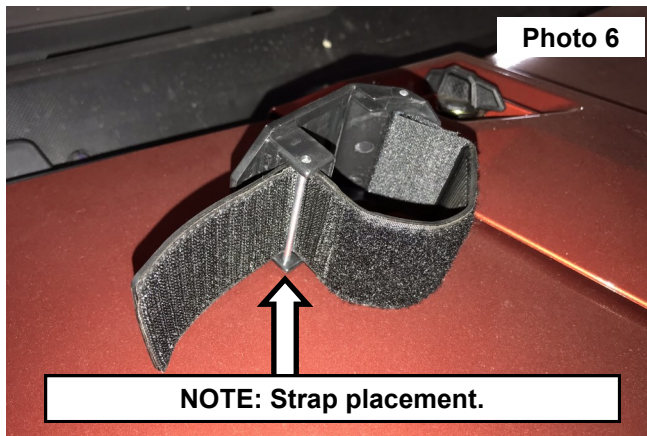
1. Clean the surface of the UTV that the windshield will be applied to. **See Photo 1.**
2. Place the rubber seal around the window panel, starting on the side and working around the bottom to the opposite side. **The trim will not be installed on the top (side with slotted holes).** **See Photo 2.**



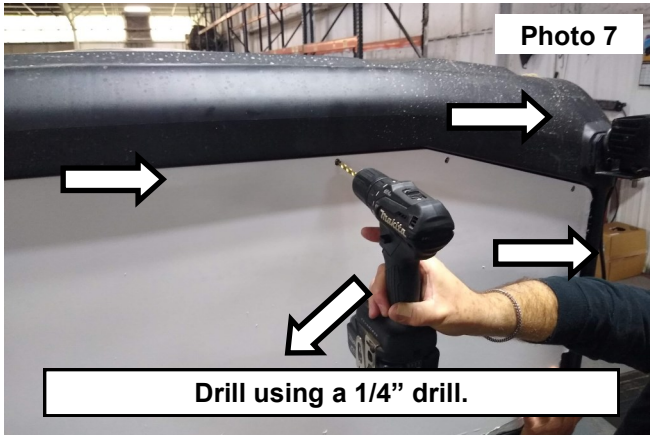
3. Rubber seal installed on sides and bottom. Trim any excess. **See Photo 3.**
4. Place the rear panel into the rear of the UTV. **See Photo 4.**



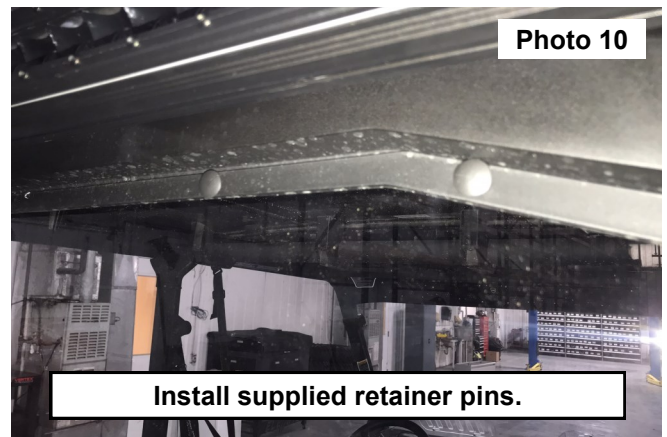
5. Secure the panel using the 2 supplied straps. **See Photo 5.**
6. **NOTE:** How the strap is wrapped behind the pin. **See Photo 6.**



- Using the rear panel as a guide and a 1/4" drill, drill the 7 upper holes in the factory top. **See Photo 7.**
- Using the rear panel as a guide and a 1/4" drill, drill the 1 center hole in the factory bracing. **See Photo 8.**



- Install the supplied retainer pins in the 7 upper holes, by pressing firmly. **See Photos 9 & 10.**



- Don't forget to install the lower retainer pin. **See Photo 11.**





By purchasing any item sold by Rough Country, LLC, the buyer expressly warrants that he/she is in compliance with all applicable, State, and Local laws and regulations regarding the purchase, ownership, and use of the item. It shall be the buyers responsibility to comply with all Federal, State and Local laws governing the sales of any items listed, illustrated or sold. The buyer expressly agrees to indemnify and hold harmless Rough Country, LLC for all claims resulting directly or indirectly from the purchase, ownership, or use of the items.

