

GM 2009-13 Chevy / GMC 1500 Cat Back Performance Exhaust System

Fits 4.8L, 5.3L Engine / 143.5, 157.5 Wheelbase / Crew Cab & Extended Cab

Congratulations on your purchase of a Rough Country Performance Exhaust System

Please read instructions before beginning installation. Check the kit hardware against the kit contents shown below. Be sure you have all needed parts and know where they go.

If question exist, please call us @1-800-222-7023. We will be happy to answer any questions concerning this product.

Check all fasteners for proper torque. Check to ensure for adequate clearance between all components.

Allow the stock exhaust to cool before removal. Periodically check all hardware for tightness.

Allow adequate time for the exhaust to cool before disassembly.

NOTICE: Please see info below for various CAB/BED options.

Extended cab w/6.5' Bed. Do not use extension pipe "C".

Crew Cab W/5.5' bed. Do not use extension pipe "C"

Extended Cab w/8' Bed. Install tube extension "C" with supplied clamp.

KIT CONTENTS:

Exhaust Clamps x7
Inlet Tube (A) x1
Mid Tube (B) x1
Exhaust Hanger Clamp (C)
Extension Pipe (D)
Muffler (E) x1
Right Side Exit Tube (F) x1
Left Side Exit Tube (G) x1
Left Side Down Tube (H) x1
Rubber Exhaust Isolator (I) x1
Rear Hanger Bracket (J) x1
80 Deg. Exit Tubes (K) x2
(Black) Exhaust Tips (L) x2

TOOLS NEEDED:

10mm Socket
13mm Socket
16mm Socket
9/16 Wrench and Socket

HARDWARE INCLUDED:

3/8-16 x 1.25 Hex Head Bolt x1
3/8 Flat Washers x2
3/8-16 Hex Nut x1
7/16" Hanger Keeper x2
1/2" Hanger Keeper x5
3" Band Clamp x2
2 1/2 Band Clamp x5
2 1/2" Band Clamp Hanger x1
2 x 2 Square Plate x 2

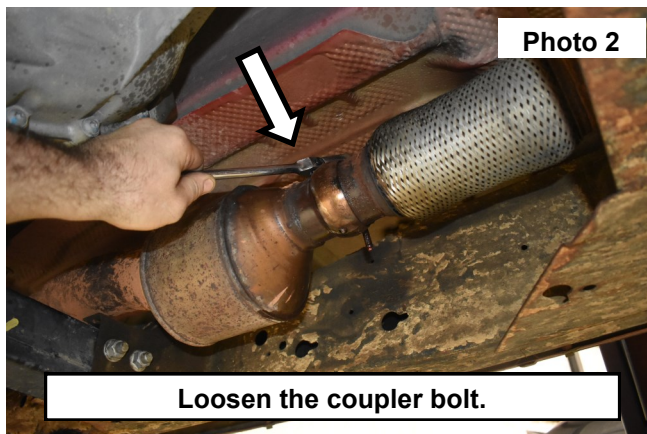
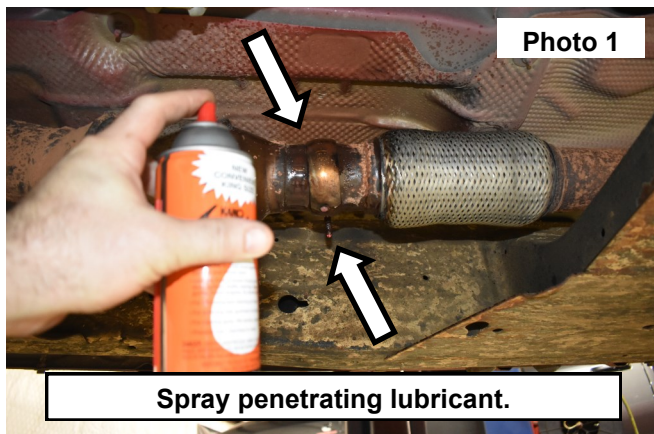
Torque Specs:

Size	Grade 5	Grade 8	Size	Class 8.8	Class 10.9
5/16"	15 ft/lbs	20ft/lbs	6MM	5ft/lbs	9ft/lbs
3/8"	30 ft/lbs	35ft/lbs	8MM	18ft/lbs	23ft/lbs
7/16"	45 ft/lbs	60ft/lbs	10MM	32ft/lbs	45ft/lbs
1/2"	65 ft/lbs	90ft/lbs	12MM	55ft/lbs	75ft/lbs
9/16"	95 ft/lbs	130ft/lbs	14MM	85ft/lbs	120ft/lbs
5/8"	135ft/lbs	175ft/lbs	16MM	130ft/lbs	165ft/lbs
3/4"	185ft/lbs	280ft/lbs	18MM	170ft/lbs	240ft/lbs

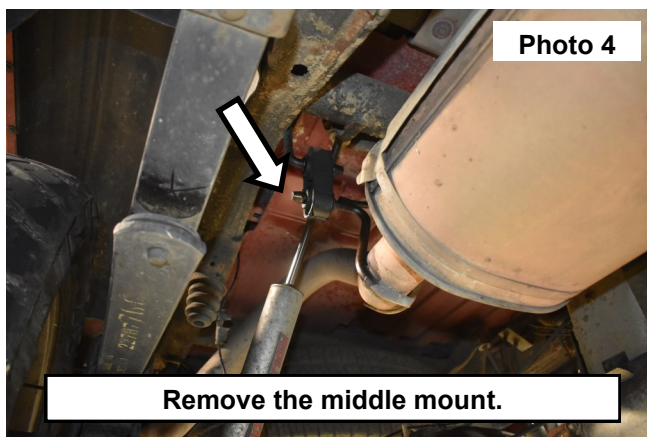
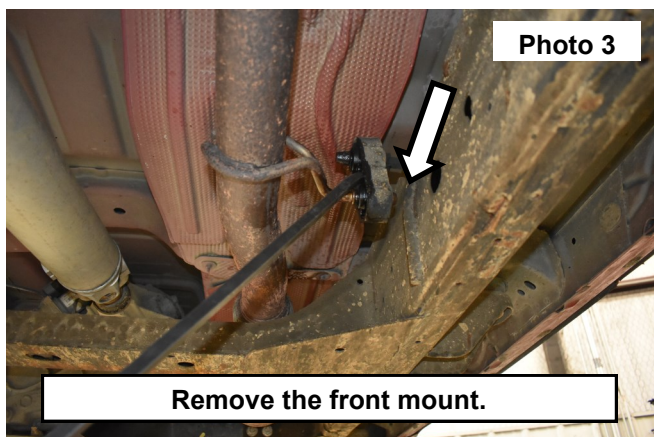


INSTALLATION INSTRUCTONS

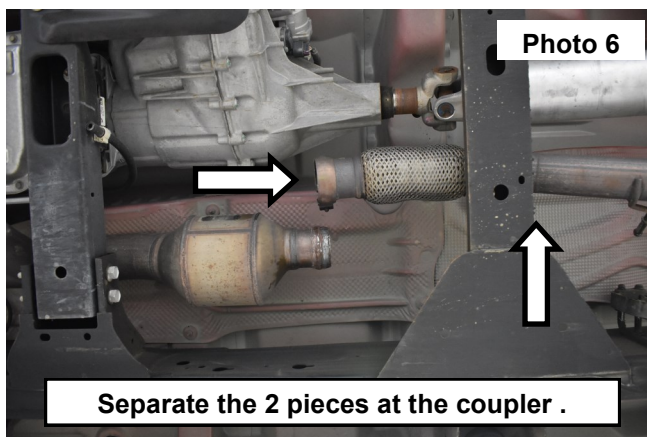
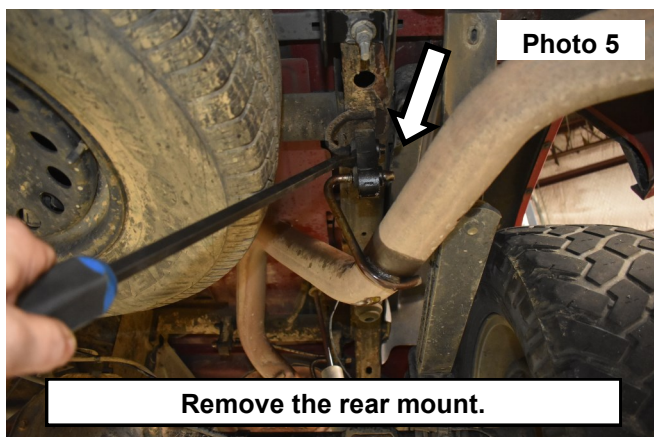
1. It may be necessary to spray a penetrating lubricant on the exhaust coupler and use a wire brush if there is rust buildup around the threads. **See Photo 1.**
2. After the exhaust has adequately cooled, loosen the exhaust coupler using a 13mm wrench. **See Photo 2. NOTE: The coupler is attached to the flex tube side. This will be removed in a later step.**



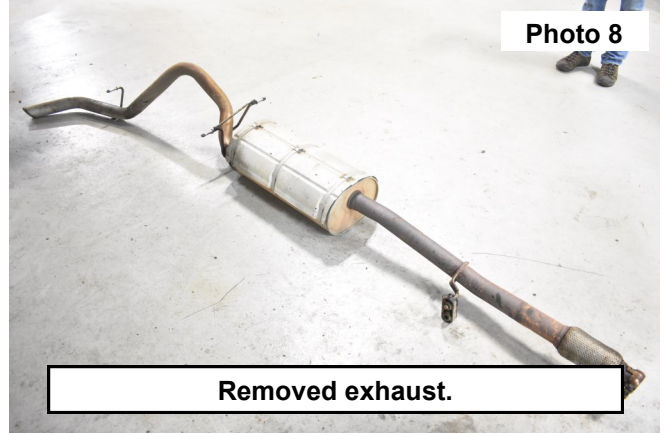
3. Remove the exhaust mounts from the rubber hangers leaving the rubber mount on the vehicle for reuse. It may be helpful to apply lubricant to the hanger and remove using a pry tool. **See Photos 3, 4, and 5 for locations of removal.**



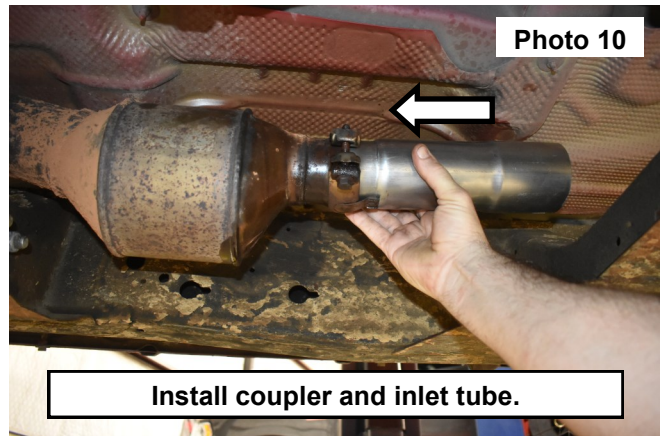
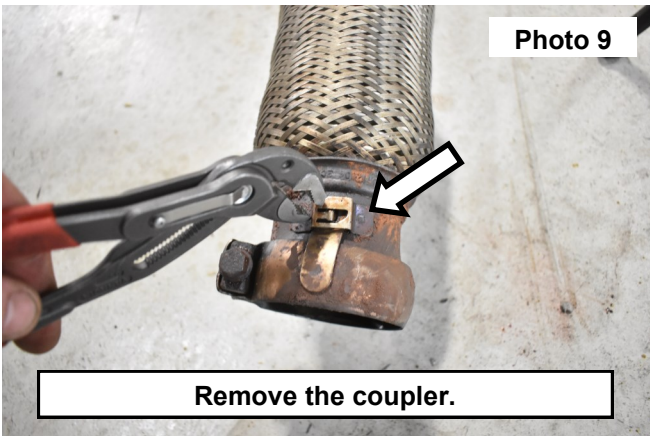
4. Separate the 2 pieces at the coupler moving the exhaust to the rear of the vehicle past the front crossmember. **See Photo 6.**



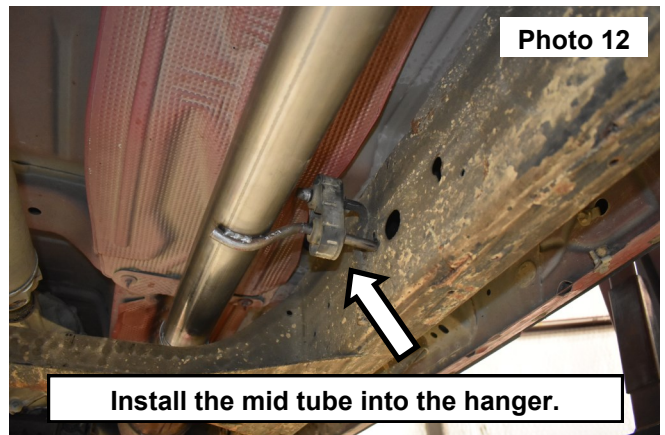
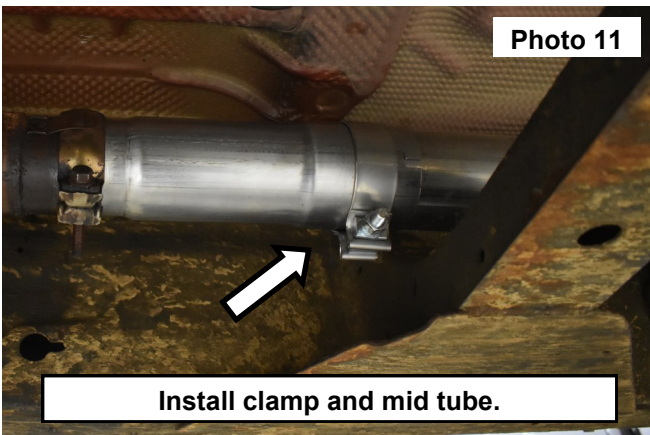
5. Once the front of the exhaust has been moved back far enough to clear the crossmember. Lower the exhaust down and rotate the rear portion of the exhaust forward over the axle removing it from the vehicle. **See Photo 7 and 8.**



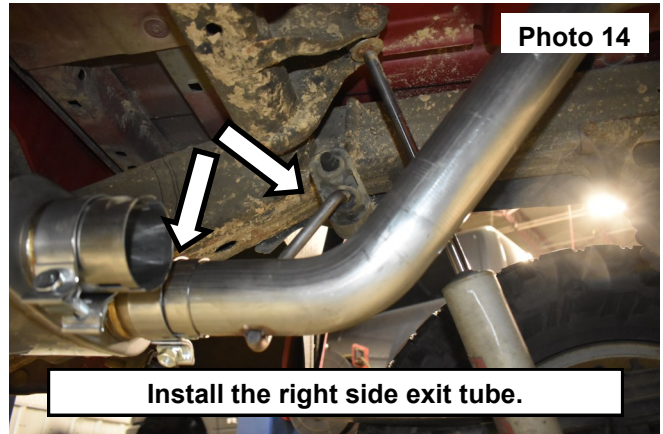
6. Remove the coupler from the flex tube using pliers to lift the tab up. Then remove the coupler. **See Photo 9.**
7. Install the coupler onto the inlet tube "A" and the catalytic converter. Using a 13mm wrench snug the clamp so the inlet tube can still be adjusted. **See Photo 10.**



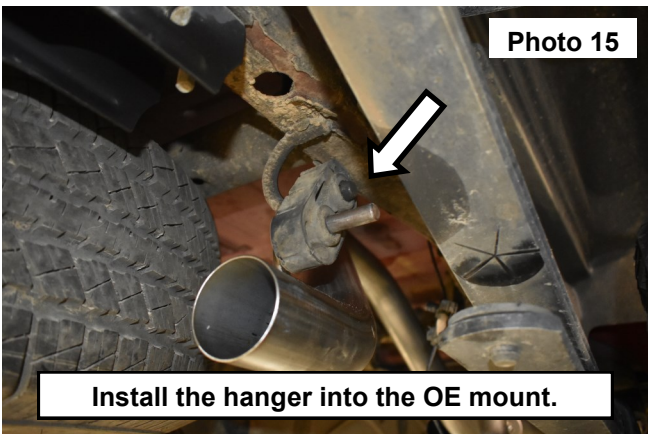
8. Install the supplied clamp onto the inlet tube. Install the mid tube "B" into the inlet tube and the OE exhaust hanger. **See Photo 11 and 12.** *NOTE: For some early 2000 models the mount hanger is attached further rearward on the frame. If needed used the supplied clamp hanger "C" in this location with the stock isolator.*
9. On some models an extension tube "D" is required and supplied with this kit. Install as needed after the front tube.



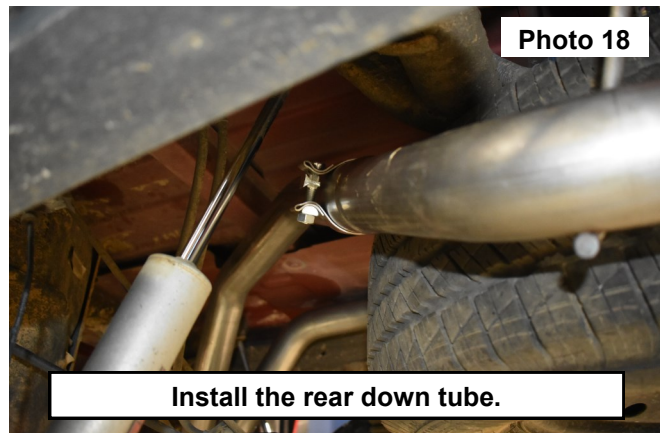
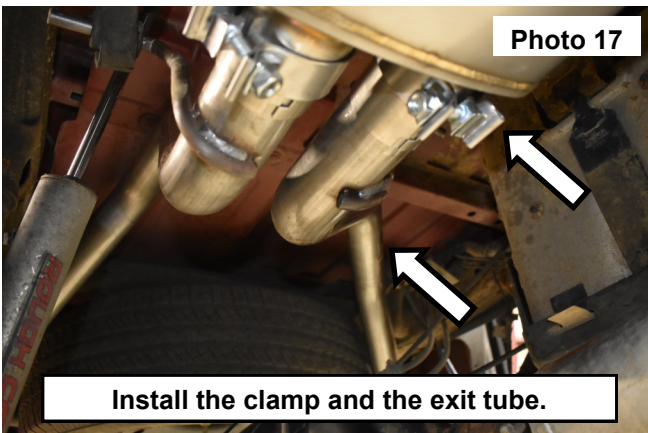
10. Using a support and install the muffler "E" onto the mid tube. **See Photo 13.**
11. Place the supplied clamp onto the right side muffler exit tube "F". Install the right side exit tube into the muffler. **See Photo 14.**
12. Install the front tube hanger into the OE exhaust hanger.



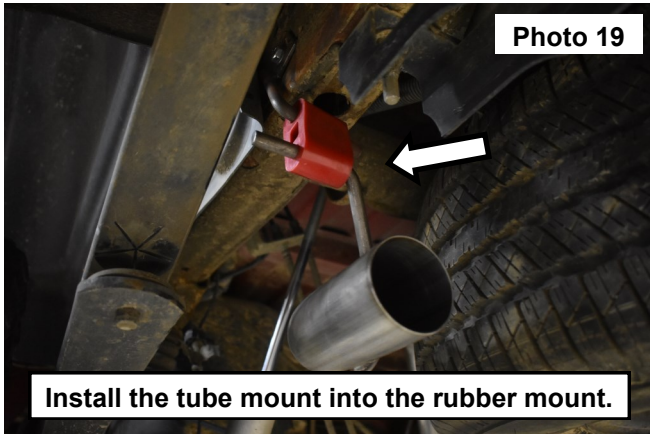
13. Install the rear tube hanger into the OE exhaust hanger. **See Photo 15.**
14. On the driver side, install the supplied exhaust hanger "H" using 1 of the supplied 3/8-16 x 1.250 bolt, (2) 3/8 flat washers and (1) 3/8-16 hex nut to secure the exhaust hanger onto the frame. Tighten using a 9/16 wrench and socket. Install the supplied rubber exhaust hanger "I" onto the installed mount. **See Photo 16.**



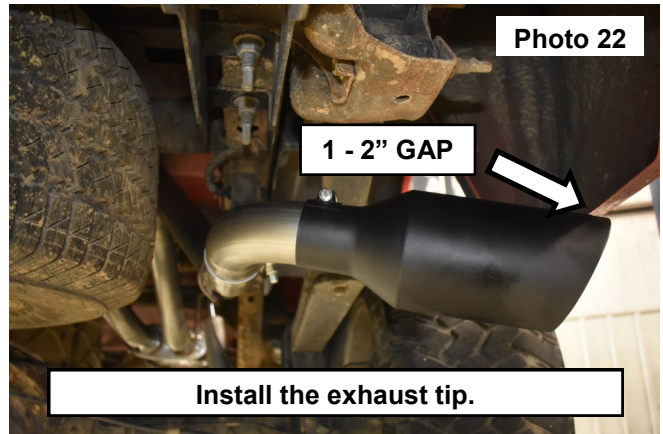
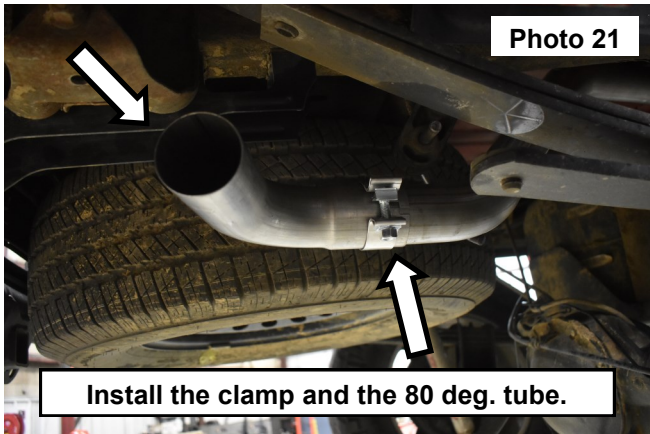
15. Install the clamp onto the left side exit on the muffler. Then install the left side exit tube "G" into the muffler. **See Photo 17.**
16. Install a clamp onto the left side exit tube. Then install the left rear down tube "J" and snug the clamp down so the tube can still have adjustment. **See Photo 18.**



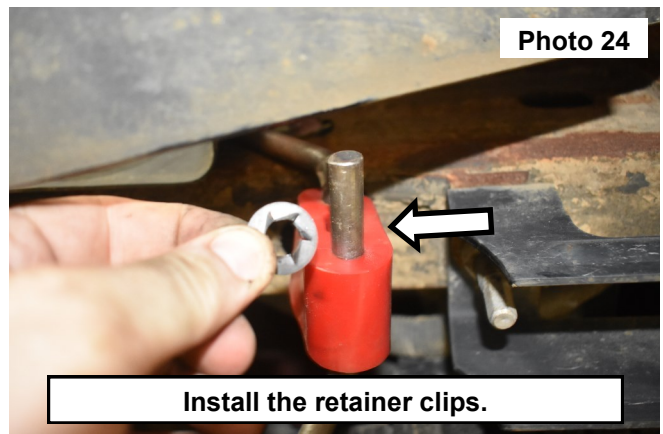
17. Install the rear mount on the left exit tube into the installed rubber mount on the frame of the vehicle. **See Photo 19.**
18. Install a clamp and the left side 80 deg. exit tube "K". Using a 16mm socket snug the clamp down so that it can still be adjusted. **See Photo 20.**



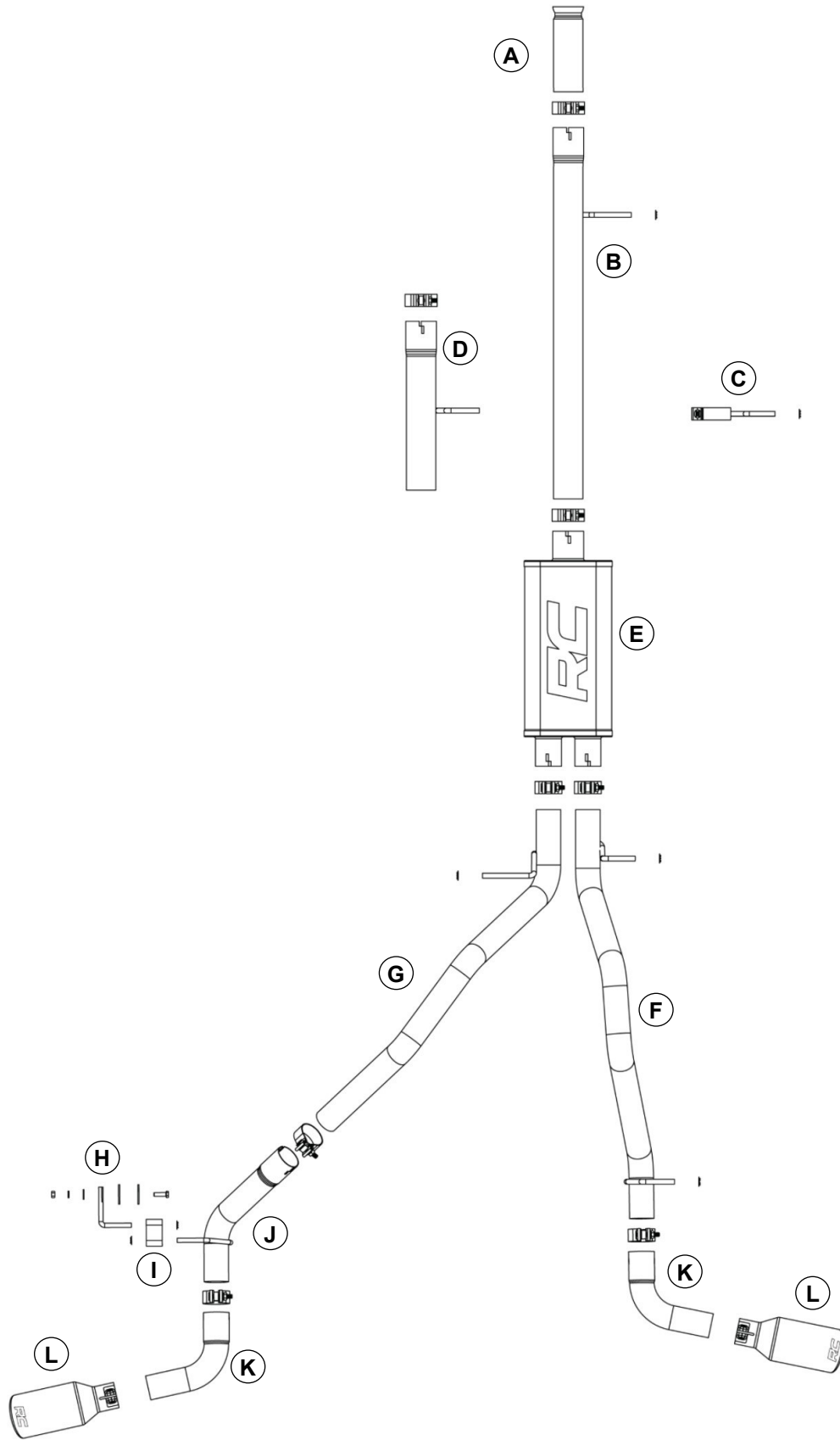
19. Install a clamp and the right side 80 deg. exit tube "K". Using a 16mm socket snug the clamp down so that it can still be adjusted. **See Photo 21.**
20. Install the right and left side exhaust tips "L" by adjusting the 80 deg pipe leaving the tip 1 - 2" away from the edge of the bottom of the bed, Leave the tip enough area not to contact the bed when the vehicle is in motion. **See Photo 22 and 23.**



21. Tighten the front clamp using a 13mm socket.
22. Tighten all of the installed clamps throughout the exhaust system using a 16mm socket.
23. Tighten the exhaust tips using a 10mm socket. **See Photo 23.**
24. Install the supplied retainer clip washers onto the tube hangers installed through the rubber exhaust hangers. **See Photo 24.**



25. Check to ensure adequate clearance between exhaust and all other components. Adjust as necessary.
26. Periodically check all hardware for tightness.



By purchasing any item sold by Rough Country, LLC, the buyer expressly warrants that he/she is in compliance with all applicable, State, and Local laws and regulations regarding the purchase, ownership, and use of the item. It shall be the buyers responsibility to comply with all Federal, State and Local laws governing the sales of any items listed, illustrated or sold. The buyer expressly agrees to indemnify and hold harmless Rough Country, LLC for all claims resulting directly or indirectly from the purchase, ownership, or use of the items.

