



# INSTALLATION INSTRUCTIONS

## Rear Wheel Well Inner Liner Ford F-150 2015+

### List of Contents:

1 Pc. Passenger's side Inner Wheel Well Liner



**1 Pc. Installation Kit**

4 pc. J Clip

4 pc. Screw

1 pc. Installation Instructions.



1 Pc. Driver's side Inner Wheel Well Liner



### Tools Required

Ratchet with 10mm socket



### Preparations:

Clean the interior panels of the rear Wheel house.

**Installation time  
estimated: 15 min.**

### Instructions:

**PLEASE READ INSTRUCTIONS CAREFULLY BEFORE STARTING THE INSTALLATION.**

**NOTE:** One person can do the installation.

#### 1. Starting at Passenger's side.

Using a ratchet with 10 mm socket remove the screw located in the rear inner area of the wheel house **(Save the Screw)**



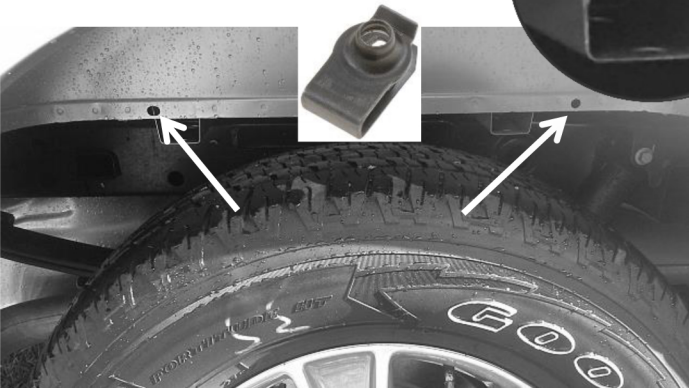
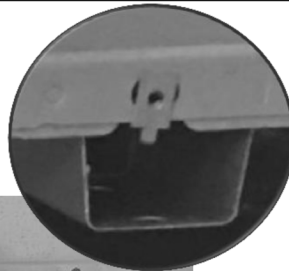
#### 2. to avoid interference and facilitate the installation:

Locate the screw on the bottom front area of the fender flair; then loosen the screw half the length.



**2.** Locate the 2 holes at the back area of the wheel house and insert one J clip in each hole.

**"Flat side of J clip visible to you"**



**4.** Mount the Inner Wheel Well Liner marked as (PS) inside the inner panel of the wheel house.



## INSTALLATION INSTRUCTIONS

### Rear Wheel Well Inner Liner

### Ford F-150 2015+

- 5.** Insert the bottom sides behind the metal flange



- 6.** Insert the upper section of the plastic liner behind the metal flange. Make sure all edges are inside the metal wheel well house edge.



- 8.** Re-install the screw saved in step 2; Then tighten the loosen screw from step 3

- 7.** Locate the 2 pre-drilled holes at the back of the inner wheel well liner, and install 2 of the screws provided



**TO INSTALL DRIVER'S SIDE  
FOLLOW THE SAME  
INSTRUCTIONS AS  
PASSENGER'S SIDE**

#### Care and Maintenance Recommendations

To protect the appearance of this product, wash with soap and water