

## 99-04 F250 Front Dual Shock Bracket

Thank you for choosing Rough Country for your suspension needs.

Please read instructions before beginning installation. Check the kit hardware against the parts list on this page and the product layout on the last page. Be sure you have all needed parts and know where they go. Also please review tools needed list and make sure you have needed tools.

If questions exist we will be happy to answer any questions concerning the design, function, and correct use of our products.

Shocks for this kit are sold separately, and can be purchased through Rough Country.

### Kit Contents

2-Shock Mounts  
1-Kit Bag including  
4-12mmx 150mm bolts  
4-12mm Lock Nuts  
4-Washers  
2-Sleeves

### Tools Needed

7/8" Deep Well Socket  
18mm Socket  
18mm Wrench  
15mm Socket  
Floor Jack  
Jack Stand

## INSTALLATION

1. Jack up the front of the vehicle and support the vehicle with jack stands, so that the front wheels are off the ground
2. Remove the front tires/wheels. Using a 7/8" deep well socket.
3. Using a 18mm socket, and wrench remove the factory shock absorbers. **See Figure 1.**
4. Using a 15mm socket remove the three bolts that hold the stock shock bracket to the frame. Retain factory bolts for re-use in later step. **See Figure 2&3.**

Figure 1



Figure 2

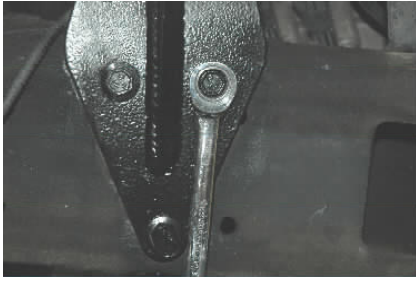


Figure 3

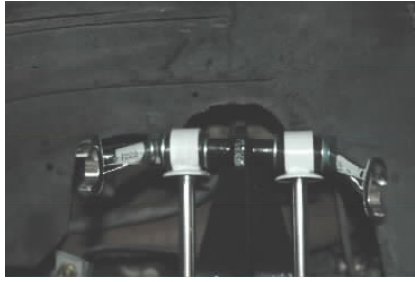


5. Install the Rough Country bracket in the factory location, using the factory bolts. Tighten using 15mm socket. **See Figure 4.**
6. Using the 12mm x 150mm bolt, washer, and nut mount the shocks to the top of the shock mount. **See Figure 5.**
7. Using the 12mm x 150mm bolt, washer, and nut mount the shocks to the bottom of the shock mount. Insert sleeve in between the original shock mounts. **Note** sleeve must be inserted.. **See Figure 6 & 7.**

**Figure 4**



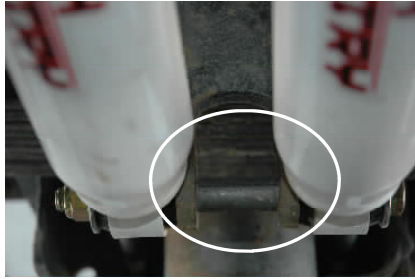
**Figure 5**



**Figure 6**



**Figure 7**



8. Tighten bolts using a 18mm socket and wrench.
9. Repeat on the opposite side.
10. Reinstall the front tires/wheels. Using a 7/8" deep well socket.
11. Remove the jack stands and lower vehicle to the ground.
12. Re torque fasteners after 500 miles. Visually inspect components and re torque fasteners during routine vehicle service.

### **Maintenance Information**

It is the ultimate buyers responsibility to have all bolts/nuts checked for tightness after the first 500 miles and then every 1000 miles. Wheel alignment steering system, suspension and driveline systems must be inspected by a qualified professional mechanic at least every 3000 miles



### **Product Information**

Often the use of dual shocks is combined with the use of dual stabilizers when bigger tires and wheels are installed to eliminate steering drift.

