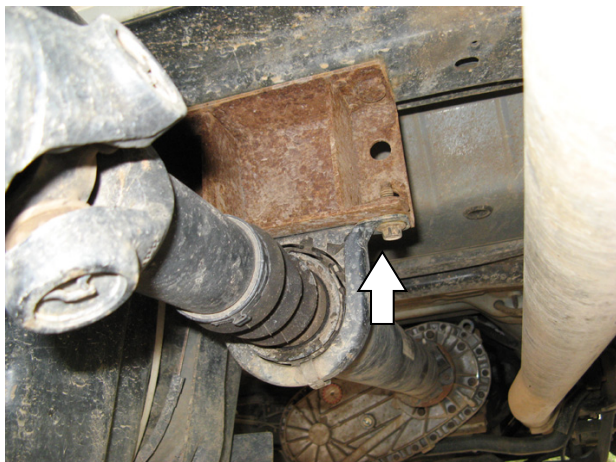
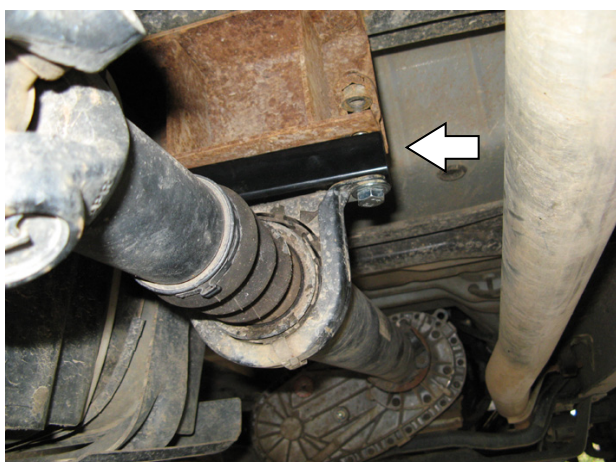


FK35 FORD F SERIES EXTRA CAB DRIVE SHAFT SPACER KIT

Part Number	Description	Quantity
4721704	Drive shaft spacer bracket	1
6151061	Bolt M12 x 65 x 1.25	2
6151135	Nut Hex M12 x 1.25	2
4581049	Washer Flat 12mm	4
4581050	Washer Spring 12mm	2



1. Support drive shaft on an axle stand.
2. Remove bolts securing drive shaft carrier bearing to mount.



3. Fit spacer between the carrier bearing and the original factory mount as shown.
4. Secure carrier bearing with new M12 hardware supplied.

Note: If your truck is fitted with a captive nut this will need to be pushed out of the way or removed.