



INSTALLATION MANUAL
REAR FENDER FLARES
PRODUCT NUMBER: JT1001
APPLICATION: 2020 JEEP GLADIATOR



IMPORTANT SAFETY GUIDE | Your safety and the safety of others is very important.

In order to help you make informed decisions about safety, we have provided the following warnings, safety precautions, installation instructions, and other important information to alert you to potential hazards that could hurt you or others.

Please do a job safety analysis before each task to identify potential hazards for your situation and remove/protect against them. Use own good judgment and take your time.

Check packaged materials immediately upon arrival to ensure that all listed parts are included and undamaged.

Read and understand all warnings, safety precautions, and instructions before installing this product.

SENSORS FIELD OF VIEW MAY BE ALTERED WITH USE OF THE REPLACEMENT BUMPER.

WARNINGS

- Failure to observe the following warnings and instructions provided in this manual could lead to severe injury and/or death.
- For professional installation only. Careless installation and/or operation can result in serious injury, death, and/or equipment damage. All liability for installation and use rests with the user or consumer.
- Fab Fours, Inc. only approves installing this product according to these written instructions with the hardware provided. Failure to install according to these instructions will invalidate the warranty. This includes, but is not limited to, using alternative installation methods, hardware, or materials.
- This product is for off road use only.

SAFETY PRECAUTIONS

- Always remove jewelry and wear eye protection.
- Always use extreme caution when jacking up a vehicle for work. Set emergency brake and use tire blocks. Locate and use the vehicle manufacturers designated lifting points. Use jack stands.
- Always use appropriate and adequate care in lifting components into place.
- Always ensure components will remain secure during installation and operation.
- Always wear safety glasses when installing this kit. A drilling operation will cause flying metal chips. Flying chips can cause serious eye injury.
- Always use extreme caution when drilling a vehicle. Always disconnect power before welding. Thoroughly inspect the area to be drilled (on both sides of material when possible) prior to drilling, and relocate any objects that may be damaged.
- Always use extreme caution when welding a vehicle. Thoroughly inspect the area to be welded (on both sides of material when possible) prior to welding, and relocate any objects that may be a fire hazard. When welding in a cab, make sure the interior surfaces are covered (e.g., welding blanket) and a fire extinguisher is at hand.
- Always use extreme caution when cutting and trimming during fitting.
- Always tighten all nuts and bolts securely per installation instructions.
- Always route electrical cables carefully. Avoid moving parts, components that become hot, and rough or sharp edges.
- Always insulate and protect all exposed wiring and electrical terminals.
- Perform regular inspections and maintenance on mounts and hardware.

TABLE OF CONTENTS

- 2 SAFETY / DISCLAIMER
- 3 TABLE OF CONTENTS
- 4 A MESSAGE FROM THE OWNER
- 5 GETTING STARTED
- 6 PROVIDED MATERIAL
- 7 DISASSEMBLY
- 11 INSTALLATION
- 17 CONTACT

A MESSAGE FROM THE OWNER



Fab Fours' was born out of a passion for customizing vehicles and a love of the outdoors. Our engineering team uses the latest 3D design software to turn new product ideas into reality. In our factory, designs come to life with the combination of cutting edge technology for metal cutting and forming and an American workforce that puts its' heart and pride into every product.

From design and manufacturing, to quality and delivery, Fab Fours' mission is to be the market leader for steel truck and jeep accessories. We make sure a quality product is delivered on time, more than expected, better than expected to our customers.

Enjoy your new Fab Fours product. Welcome to the family!

Ereg Higgs

FOUNDER, FAB FOURS

GETTING STARTED

Before you begin the installation process of your new Fab Fours product, we suggest laying out all materials and parts on a pad or protective surface.

Failure to fully account for all components before beginning installation may leave vehicle immobile until part is acquired. Refer to the next pages as an inventory check.



PROVIDED MATERIALS



JT1001-IM

50198-HW

21992 DS



21994 DS



21996 DS



21993 PS



21995 PS



21997 PS



22002-02



22002-03

22002-01



22002-04

22003-01



22003-04

22003-02



22003-03

HARDWARE KIT | 50198

FAB FOURS IDENTIFICATION	COMPONENT DESCRIPTION	QTY
50198-HW	3/8"-16 x 1 Stainless steel, button head cap screw	34
50198-HW	3/8" Stainless steel, flat washer	50
50198-HW	3/8"-16 Stainless steel, nylock nut	16
50198-HW	5/16"-18 x 1 Stainless steel, button head cap screw	16
50198-HW	5/16"-18 Stainless steel, hex nut	16
50198-HW	5/16" Stainless steel, lock washer	16
50198-HW	5/16" Stainless steel, flat washer	32

TOOLS REQUIRED

- Plastic panel pry tool
- Painters tape
- 1/2" open end wrench
- 9/16" open end wrench
- 8mm socket wrench
- 3/16" Allen wrench
- 7/32" Allen wrench
- Zip-ties
- Grinder
- Cutoff wheel
- Flap disk wheel
- Spray paint
- Marker
- Small reciprocating saw

ASSISTANCE

We recommend two people perform the installation as items are heavy and may need to be held in place while installing.

ORGANIZATION

Disassemble the vehicle where you can catalog and store everything. We suggest labeling and bagging all the OEM bolts when removing from the vehicle. Failure to keep track of parts could lead to an inability to properly reinstall components.

DISASSEMBLY

1. Using an 8mm socket wrench, remove the three (3) screws holding the OEM inner fender liner to the bed. (Figure 1)



Figure 1

2. Using a plastic body panel pry tool, remove the ribbed shank push pin holding the inner fender liner to the bed. (Figure 2)



Figure 2

3. Using a plastic body panel pry tool, pull outward on the OEM fender flare starting at one end working around removing each of the plastic push clips holding it to the bed side. (Figure 3)



Figure 3

4. Using a marker, scribe a line on the most forward bottom part of the bed that is parallel with the pinch weld at the top and that terminates at the radius at the lowest point. (Figure 4)

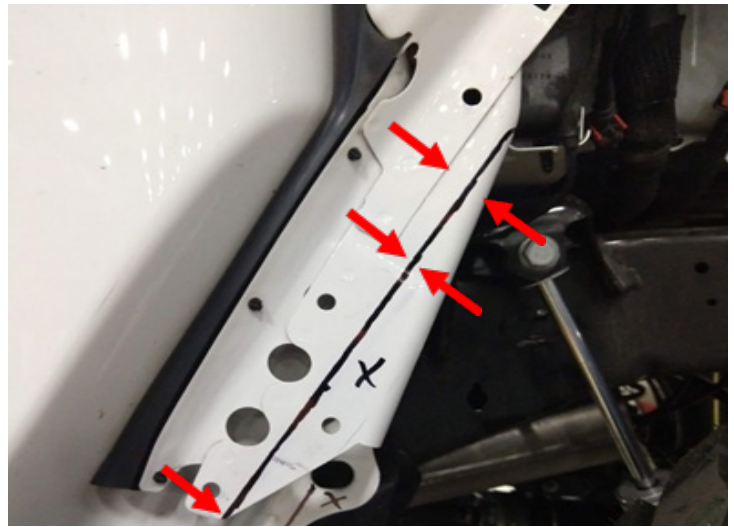


Figure 4

5. Using a marker, scribe a line on the pinch weld on the back of the cab that runs colinear with the material at the top of the pinch weld. (Figure 5)

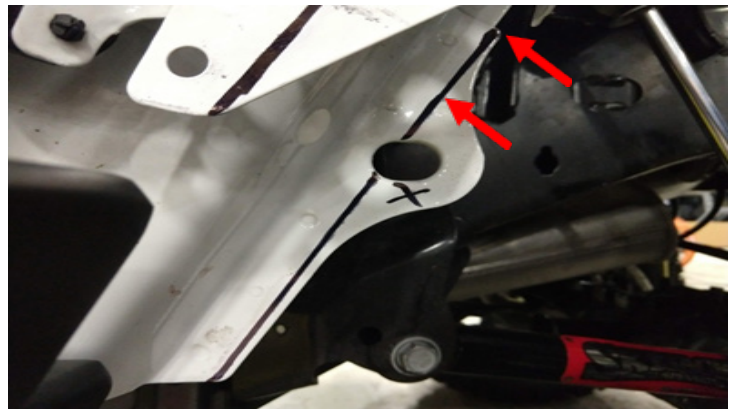


Figure 5

6. Using a grinder with a cutoff wheel, cut along the lines made in steps 4-5. (Figure 6)



Figure 6

7. Using a grinder with a flap disk wheel, remove any sharp edges made during the cutting process.

8. Using painters' tape and one of the shipping bags provided, cover the areas surrounding the cut area in preparation for paint.

9. Using spray paint (black is recommended), coat any bare metal areas created from the cutting process. (Figure 7)



Figure 7

10. Using a plastic panel pry tool, remove the harnesses in the rear of the wheel opening from their bracket. (Figure 8)



Figure 8

11. Disconnect the harness plugs by pulling out on the lock, depressing the clips, and pulling. (Figure 9)



Figure 9

12. Using the OEM jack tools, lower the spare tire in order to gain access to the inside of the frame rails. Reference you owner's manual on the spare tire lowering process. (Figure 10)



Figure 10

13. Relocate the harness to the inside of the frame rail and reconnect.

14. Using zip ties, secure the harness to the existing harness already running on the inside of the frame rail. (Figure 11)



Figure 11

15. Replace the spare tire.

INSTALLATION

16. Using a small reciprocating saw, trim the OEM inner fender liners. (Figure 12-14)

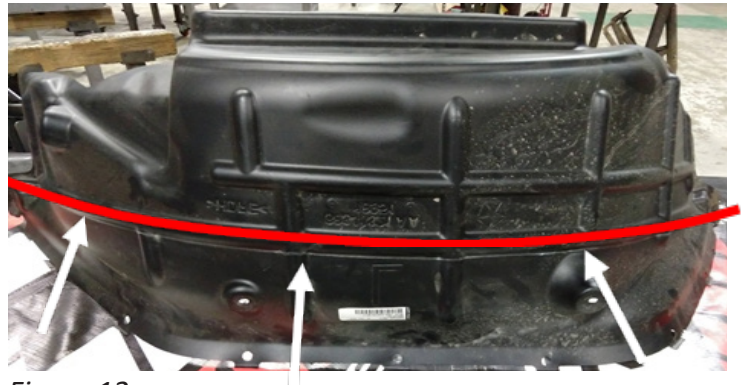


Figure 12

17. Using a grinder with a flap disk wheel, clean up the cut areas of the OEM fender liners.

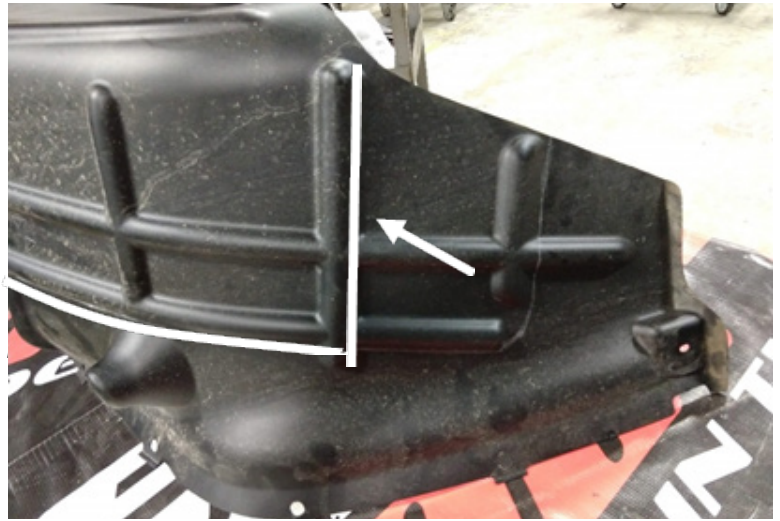


Figure 13

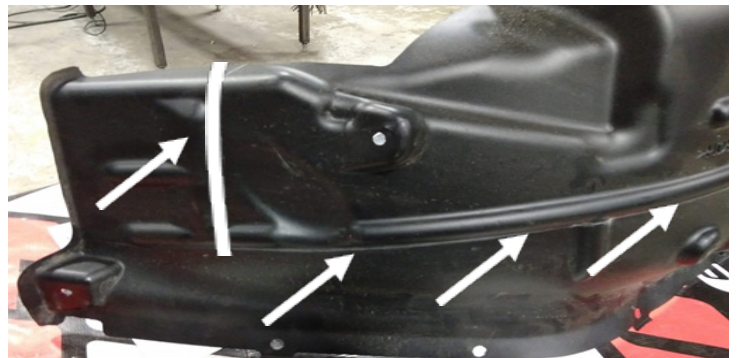


Figure 14

18. Using an 8mm socket wrench, the OEM hardware, and one (1) of the ribbed shank push pins removed earlier, reinstall the inner fender liners. (Figure 15)

19. Using painters' tape, cover the bed side a few inches around the wheel opening to protect the paint during installation of the Fab Fours fender bases

20. Using the provided 5/16" screws, lock washers, flat washers, and nuts, (50198-HW) install the provided intermediate bracket (22002-01) only hand tight. (Figure 16)

21. Using the provided 5/16" screws, lock washers, flat washers, and nuts, (50198-HW) install the provided intermediate bracket (22002-02) only hand tight. (Figure 17)



Figure 15

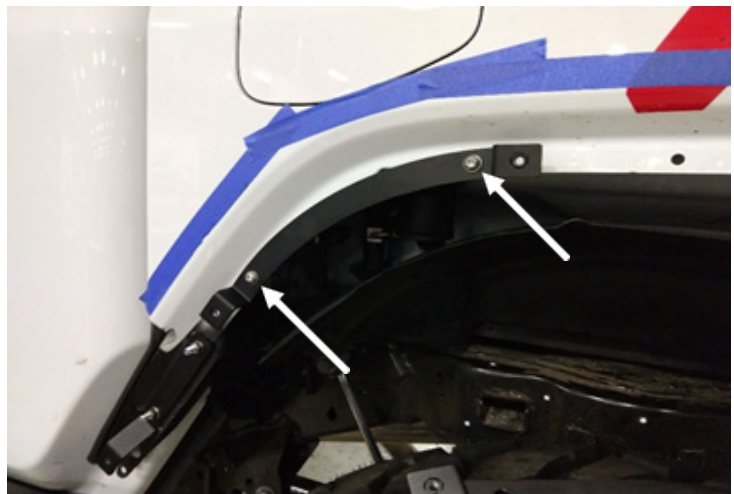


Figure 16



Figure 17

22. Using the provided 5/16" screws, lock washers, flat washers, and nuts, (50198-HW) install the provided intermediate bracket (22002-03) only hand tight. The bracket should be installed so that the top part sticks out further then the bottom. (Figure 18)



Figure 18

23. Using the provided 5/16" screws, lock washers, flat washers, and nuts, (50198-HW) install the provided intermediate bracket (22002-04) only hand tight. (Figure 19)

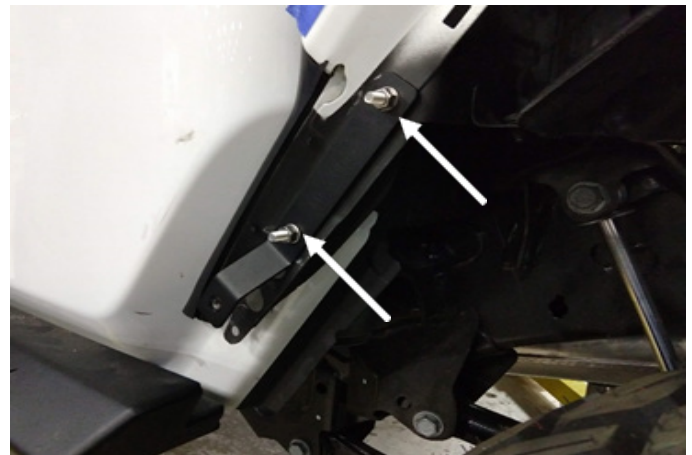


Figure 19

**Note: All intermediate brackets installed.
(Figure 20)**



Figure 20

24. Using the provided 3/8" screws, lock washers, and flat washers (50198-HW) install the provided fender base (21992) onto the bed side hand tight to position the intermediate brackets. (Figure 21)



Figure 21

25. Remove the fender bases from the vehicle being careful to not move the position of the intermediate brackets.

26. Using a 1/2" open end wrench and a 3/16" Allen wrench tighten all the 5/16" hardware previously installed with the intermediate brackets. (Figure 22)



Figure 22

27. Reinstall the provided fender base to the intermediate brackets using a 7/32" Allen wrench and the 3/8" hardware referenced in step 24. Only install hardware in the two (2) lowest holes to hold the base on the vehicle for now. Be sure to tuck the OEM inner fender liner inside the fender base during installation. (Figure 23)



Figure 23

28. Using the provided 3/8" screw, flat washers, and nylock nuts along with a 7/32" Allen wrench and 9/16" open end wrench install the provided fender flare skin (21996) onto the provided fender flare (21994). (Figure 24)



Figure 24

29. Using the provided 3/8" screw and flat washers along with a 7/32" Allen wrench install the provided fender flare to the provided fender base using the remaining holes in the fender base. (Figure 25)

Maintenance/Care

- Periodically check and tighten all fasteners
- Stripped, fractured, or bent bolts or nuts to need to be replaced.



Figure 25

CONTACT INFORMATION

**FAB FOURS INC.
2213 INDUSTRIAL PARK ROAD
LANCASTER, SC 29720**

**PHONE: (866) 385-1905
FAX: 866-574-1423
EMAIL: SUPPORT@FABFOURS.COM
WWW.FABFOURS.COM**



**“IF YOU’RE LOOKING FOR MORE OF THE SAME,
THEN YOU’VE COME TO THE WRONG PLACE.”**

- GREG HIGGS

