



Installation Instructions

Winch Mount

Product Number: N3550

Application: 2013 Dodge 1500

SAFETY

Your safety and the safety of others is very important.

- In order to help you make informed decisions about safety, we have provided installation instructions and other information.
- These instructions alert you to potential hazards that could hurt you or others.
- Please do a job safety analysis (JSA) before each task to identify potential hazards for your situation and remove/protect against them.
- You must use your own good judgment, and take your time.

Read and understand all safety precautions and instructions before installing this product.

THIS PRODUCT IS FOR OFFROAD USE ONLY. ALL LIABILITY FOR INSTALLATION AND USE RESTS WITH THE OWNER.

CARELESS INSTALLATION AND OPERATION CAN RESULT IN SERIOUS INJURY OR EQUIPMENT DAMAGE.

Injury hazard

Failure to observe these instructions could lead to severe injury or death.

- Always** remove jewelry and wear eye protection.
- Always** use extreme caution when jacking up a vehicle for work. Set emergency brake and use tire blocks. Locate and use the vehicle manufacturers designated lifting points. Use jack stands.
- Always** use appropriate and adequate care in lifting components into place.
- Always** insure components will remain secure during installation and operation.
- Always** wear safety glasses when installing this kit. A drilling operation will cause flying metal chips. Flying chips can cause serious eye injury.
- Always** use extreme caution when drilling on a vehicle. Thoroughly inspect the area to be drilled (on both sides of material) prior to drilling, and relocate any objects that may be damaged.
- Always** use extreme caution when cutting and trimming during fitting.
- Always** tighten all nuts and bolts securely per installation instructions.
- Always** route electrical cables carefully. Avoid moving parts, components that become hot and rough or sharp edges.
- Always** insulate and protect all exposed wiring and electrical terminals.
- Always** perform regular inspections and maintenance on mounts and related hardware.



Installation Instructions

Winch Mount

Product Number: N3550

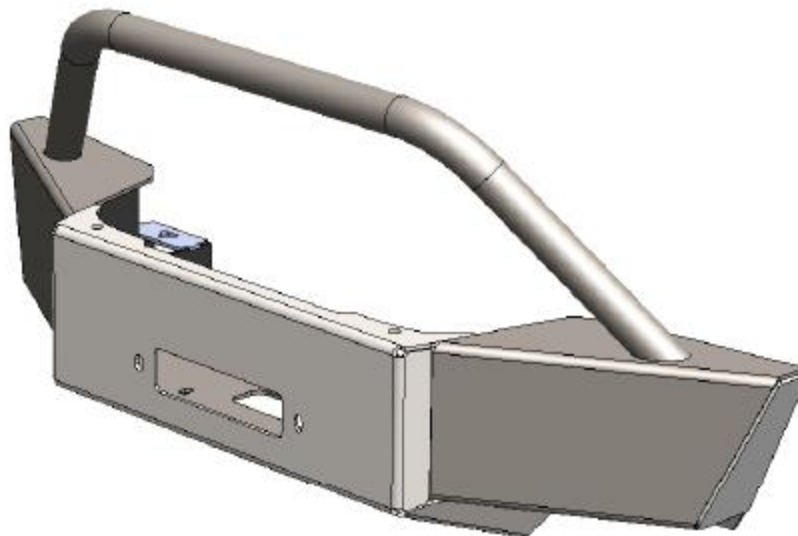
Application: 2013 Dodge 1500

I. Overview

Congratulations on your new purchase of the industries' best and most stylish winch mount available for the 2013 Dodge 1500! This winch mount has been engineered for strength.

Your winch mount is designed in 3-D from digitized data, CNC laser cut, fabricated, and powder coated...all in the U.S.A.

Enjoy the fit and finish of a quality Dodge 1500 Winch Mount from Fab Fours Inc.





Installation Instructions

Winch Mount

Product Number: N3550

Application: 2013 Dodge 1500

II. Tools Required

½" Drive Socket Wrench with 3" Extension, socket set, and a wrench set.

III. Removal of OEM tow hooks (if applicable)

1. From underneath the driver side of the vehicle, remove the driver side OEM tow hook using a socket wrench.
 1. The OEM tow hooks are mounted using three (3) bolts. One on the rear of the tow hook, and two on the front of the tow hook that also bolts the bumper to the frame of the vehicle.
 2. Remove the nuts from the bolts that support the front of the tow hook bracket, but do NOT remove the bolts. Also remove any washers that are on the bolt.
 3. Remove the rear bolt that fastens the rear of the tow hook to the frame.
 4. Slide the tow hook, with the bracket, off the two mounting bolts and remove from the vehicle.
2. Repeat the preceding steps to remove the passenger side OEM tow hook.
 1. NOTE: The two bolts that supported the front of the OEM tow hooks will be reused to mount the Fab Fours Winch Mount Sockets.



Installation Instructions

Winch Mount

Product Number: N3550

Application: 2013 Dodge 1500

IV. Installation of Fab Fours Winch Mount

1. Review the exploded parts view below.
2. Identify one of the Fab Fours winch mount sockets. (They are both identical.)
3. From underneath the driver side of the vehicle, lift the FabFours winch mount socket into position so that the front two slotted holes are on the existing OEM Tow Hook front mounting bolts.
4. Install the rear OEM tow hook bolt from the bottom, but DO NOT tighten!
5. Install the OEM Nuts back onto the front two bolts, but DO NOT tighten!



6. Repeat the above steps to install the passenger side Fab Fours Winch Mount Socket.
7. Install the two Tow hooks onto the winch mount using the hardware provided.
8. Torque the Tow Hook Mounting bolts to 106 Foot-Pounds.
9. Install the small frame winch (Customer Supplied).
10. With the aid of a lifting device or additional helpers, lift the winch mount and position it so that the rear tongues align with the holes in the factory bumper, and also with the Fab Fours Winch Mount Sockets that are already installed.
11. Carefully slide the Winch mount through the factory bumper and engage the tongues into the sockets so that the holes in the side of the sockets line up with the holes in the sides of the tongues.
12. Install the provided hardware through the socket and tongue on each side of the vehicle.



Installation Instructions

Winch Mount

Product Number: N3550

Application: 2013 Dodge 1500

13. Hand Tighten the bolts that connect both sockets to the vehicle.
14. Hand Tighten the bolts that connect the winch mount to the socket.
15. Tighten all bolts.

V. Maintenance/Care

- Periodically check and tighten all fasteners
- Stripped, fractured, or bent bolts or nuts need to be replaced
- After washing of the vehicle make sure to fully dry all surfaces

VI. Contact Information

Fab Fours Inc.
2213 Camp Creek Rd.
Lancaster, SC 29720

Phone (866)-385-1905
Fax (866)-574-1424
Email Support@fabfours.com



More than expected... Better than expected