



Installation Instructions

2015 Chevy and GMC HD Rear Bumper
Product Number: W3050/W3051
Application: 2015+ Chevy and GMC HD Trucks

SAFETY

Your safety and the safety of others is very important.

- In order to help you make informed decisions about safety, we have provided installation instructions and other information.
- These instructions alert you to potential hazards that could hurt you or others.
- Please do a job safety analysis before each task to identify potential hazards for your situation and remove/protect against them.
- You must use your own good judgment, and take your time.

Read and understand all safety precautions and instructions before installing this product.

THIS PRODUCT IS FOR OFFROAD USE ONLY. ALL LIABILITY FOR INSTALLATION AND USE RESTS WITH THE OWNER.

CARELESS INSTALLATION AND OPERATION CAN RESULT IN SERIOUS INJURY OR EQUIPMENT DAMAGE.

IF REPLACING A SENSOR BUMPER, SENSORS' FIELD OF VIEW WILL BE ALTERED WITH USE OF THE REPLACEMENT BUMPER.

Injury hazard

Failure to observe these instructions could lead to severe injury or death.

- Always** remove jewelry and wear eye protection.
- Always** use extreme caution when jacking up a vehicle for work. Set emergency brake and use tire blocks. Locate and use the vehicle manufacturers designated lifting points. Use jack stands.
- Always** use appropriate and adequate care in lifting components into place.
- Always** insure components will remain secure during installation and operation.
- Always** wear safety glasses when installing this kit. A drilling operation will cause flying metal chips. Flying chips can cause serious eye injury.
- Always** use extreme caution when drilling on a vehicle. Thoroughly inspect the area to be drilled (on both sides of material) prior to drilling, and relocate any objects that may be damaged.
- Always** use extreme caution when cutting and trimming during fitting.
- Always** tighten all nuts and bolts securely per installation instructions.
- Always** route electrical cables carefully. Avoid moving parts, components that become hot and rough or sharp edges.
- Always** insulate and protect all exposed wiring and electrical terminals.
- Always** perform regular inspections and maintenance on mounts and related hardware.





Installation Instructions

2015 Chevy and GMC HD Rear Bumper
Product Number: W3050/W3051
Application: 2015+ Chevy and GMC HD Trucks

I. Parts List

- W3050 rear replacement bumper with mounting brackets
- W3050-HW fastener kit
- 4 License plate mounting inserts
- Instruction Manual

II. Tools Required

- Socket Wrench with Extensions
- 3/4", 13mm, 15mm, 18mm, & 21mm Sockets
- 3/4", 13mm, 15mm, 18mm, & 21mm Box End Wrench





Installation Instructions

2015 Chevy and GMC HD Rear Bumper
Product Number: W3050/W3051
Application: 2015+ Chevy and GMC HD Trucks

III. Removal of Stock Bumper

1. Remove license plate, and OEM license plate lights. Disconnect trailer receptacle. If equipped, unplug back-up sensor harness.
2. Remove the two bolts attaching the stock bumper to the factory trailer hitch using a 13mm wrench.



Figure 1

3. Remove the six bolts (three per side) attaching the stock bumper to the chassis using a 21mm wrench. Remove the remaining two bolts (circled in red) with a 15mm wrench.



Figure 2





Installation Instructions

2015 Chevy and GMC HD Rear Bumper
Product Number: W3050/W3051
Application: 2015+ Chevy and GMC HD Trucks



Figure 3

4. Loosen the bolts attaching the bed to the truck using an 18mm wrench.
5. Remove the OEM sensors from their housings (4 in total).
6. Remove OEM bumper by lifting the bed from the truck and pulling the bumper rearward away from the truck.
7. Remove OEM Spare Tire Access Cover and Trailer Plug from the OEM bumper. Set aside for reinstallation.
8. **FOR SENSOR BUMPER INSTALLATION ONLY:** Remove the sensor housings from the stock bumper by pressing in on the four housing tabs and pushing it out of the bumper.





Installation Instructions

2015 Chevy and GMC HD Rear Bumper
Product Number: W3050/W3051
Application: 2015+ Chevy and GMC HD Trucks

IV. Installation

1. **FOR SENSOR BUMPER INSTALLATION ONLY:** Place the OEM sensor housings into your Fab Fours Premium Plate Bumper. Use the provided epoxy to secure the OEM housing from the back side of the bumper. Instructions on how to use the epoxy can be found on the packaging.

***NOTE: DO NOT EPOXY THE SENORS, ONLY THE HOUSINGS**

Due to the angled design of the clips, Fab Fours recommends that you angle the outer most sensors towards the respective outsides of the truck and the inner sensors towards the middle of the truck.

Allow epoxy to set before continuing.

2. Replace OEM bumper with the Fab Fours Premium Plate Bumper. Use the $\frac{1}{2}$ "x $\frac{1}{2}$ " long fasteners and a $\frac{3}{4}$ " wrench to fasten the bumper mounts to the frame rail in the OEM mounting locations. Do not fully tighten.
3. Mount bumper to the mounts using the supplied stud plates, the supplied $\frac{1}{2}$ " nuts and a $\frac{3}{4}$ " wrench.





Installation Instructions

2015 Chevy and GMC HD Rear Bumper
Product Number: W3050/W3051
Application: 2015+ Chevy and GMC HD Trucks

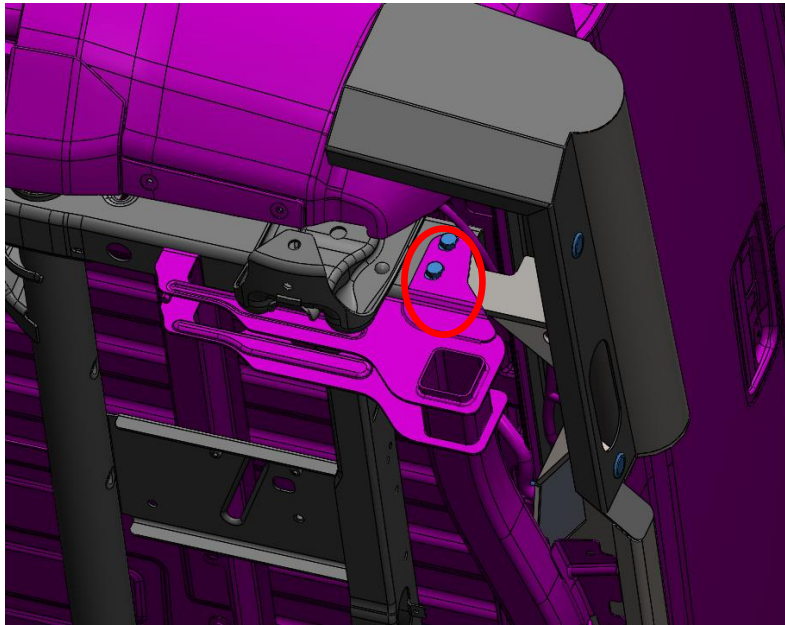


Figure 4

4. Level and align the bumper in relation to the truck bed. Fully tighten all fasteners.
5. Slowly lower the tailgate to ensure there will be no interference. If required, loosen the frame/bumper bolts and adjust alignment of the bumper.
6. Install trailer plug receptacle. The stock plug receptacle must be drilled with a 7/32 drill bit (1/4 is acceptable) using the shown impressions in the receptacle as guides. Attach with the provided #8 hardware.



Figure 5





Installation Instructions

2015 Chevy and GMC HD Rear Bumper
Product Number: W3050/W3051
Application: 2015+ Chevy and GMC HD Trucks



Figure 6

7. Reinstall license plate with provided plastic inserts
8. Secure all loose wiring and harnesses to the frame or bumper with zip ties.
9. **FOR SENSOR BUMPER INSTALLATION ONLY:** Install the sensor harness back into the epoxy-secured housing clips. Finally, plug the OEM sensor harness into the truck.

V. Maintenance/Care

- Periodically check and tighten all fasteners.
- Stripped, fractured, or bent bolts or nuts need to be replaced.

VI. Contact Information

Fab Fours Inc.
1312 Camp Creek Rd
Lancaster, SC 29720

Phone: (866)-385-1905
Fax: (866)-574-1424
Email: Support@fabfours.com



More than expected... Better than expected.

