



# Installation Instructions

## Winch Mount

Product Number: N4160, N4170

Application: 2017 Ford Super Duty

# SAFETY

### Your safety and the safety of others is very important.

- In order to help you make informed decisions about safety, we have provided installation instructions and other information.
- These instructions alert you to potential hazards that could hurt you or others.
- Please do a job safety analysis (JSA) before each task to identify potential hazards for your situation and remove/protect against them.
- You must use your own good judgment, and take your time.

**Read and understand all safety precautions and instructions before installing this product.**

**THIS PRODUCT IS FOR OFFROAD USE ONLY. ALL LIABILITY FOR  
INSTALLATION AND USE RESTS WITH THE OWNER.**

**CARELESS INSTALLATION AND OPERATION CAN RESULT IN SERIOUS INJURY  
OR EQUIPMENT DAMAGE.**

**SENSORS FIELD OF VIEW WILL BE ALTERED WITH USE OF THE  
REPLACEMENT BUMPER.**

## Injury hazard

### Failure to observe these instructions could lead to severe injury or death.

- Always** remove jewelry and wear eye protection.
- Always** use extreme caution when jacking up a vehicle for work. Set emergency brake and use tire blocks. Locate and use the vehicle manufacturers designated lifting points. Use jack stands.
- Always** use appropriate and adequate care in lifting components into place.
- Always** insure components will remain secure during installation and operation.
- Always** wear safety glasses when installing this kit. A drilling operation will cause flying metal chips. Flying chips can cause serious eye injury.
- Always** use extreme caution when drilling on a vehicle. Thoroughly inspect the area to be drilled (on both sides of material) prior to drilling, and relocate any objects that may be damaged.
- Always** use extreme caution when cutting and trimming during fitting.
- Always** tighten all nuts and bolts securely per installation instructions.
- Always** route electrical cables carefully. Avoid moving parts, components that become hot and rough or sharp edges.
- Always** insulate and protect all exposed wiring and electrical terminals.
- Always** perform regular inspections and maintenance on mounts and related hardware.



# Installation Instructions

## Winch Mount

Product Number: N4160, N4170

Application: 2017 Ford Super Duty

### I. Overview

Congratulations on your purchase of the industries' best and most stylish Ford Super Duty Winch Mount! This bumper has been **engineered** for strength while keeping the weight down. It can accept the Warn 16.5 winch... and look cool doing it.

This product has also been **engineered** to allow alignment in three directions so you will end up with a very professional fit.

Your bumper was designed in 3-D, fabricated, and powder coated... all in the U.S.A.

Enjoy the fit and finish of a quality Ford Super Duty Winch Mount from Fab Fours Inc!





## Installation Instructions

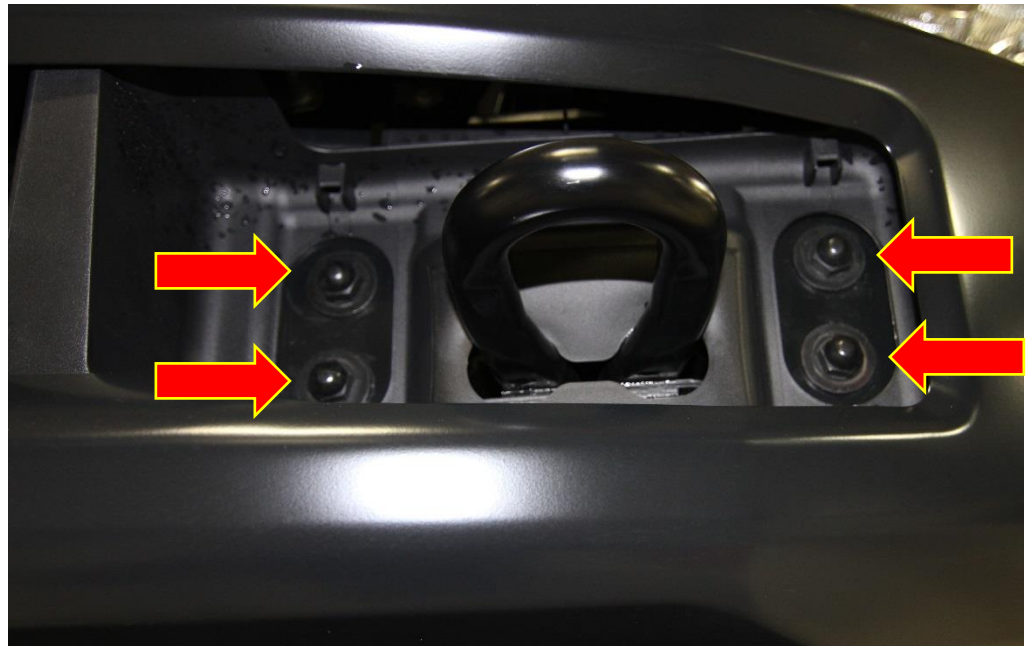
### Winch Mount

Product Number: N4160, N4170

Application: 2017 Ford Super Duty

## II. Vehicle Preparation

1. Start by removing four bolts around tow hook on each side of vehicle. This will require an 18mm socket.



2. Next with the help of someone holding the bumper in place, remove the four 15mm bolts from the bumper support on both sides of vehicle.

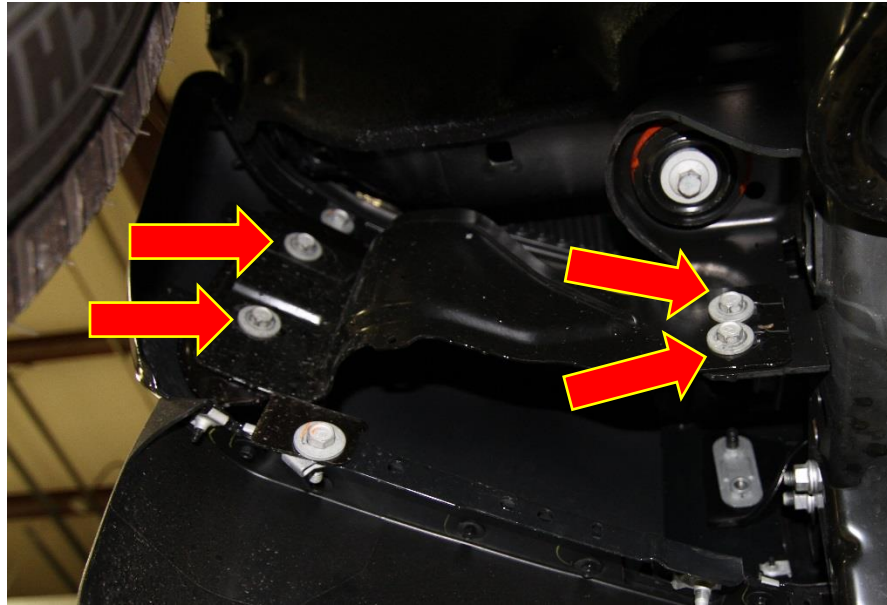


## Installation Instructions

### Winch Mount

Product Number: N4160, N4170

Application: 2017 Ford Super Duty



3. Bumper can now be removed. (Be careful when removing bumper if vehicle has a block heater, as this will have to be unplugged during this step.)
4. With the bumper off the vehicle you can now remove the tow hooks by removing the four 18mm bolts located under the top of frame rail.

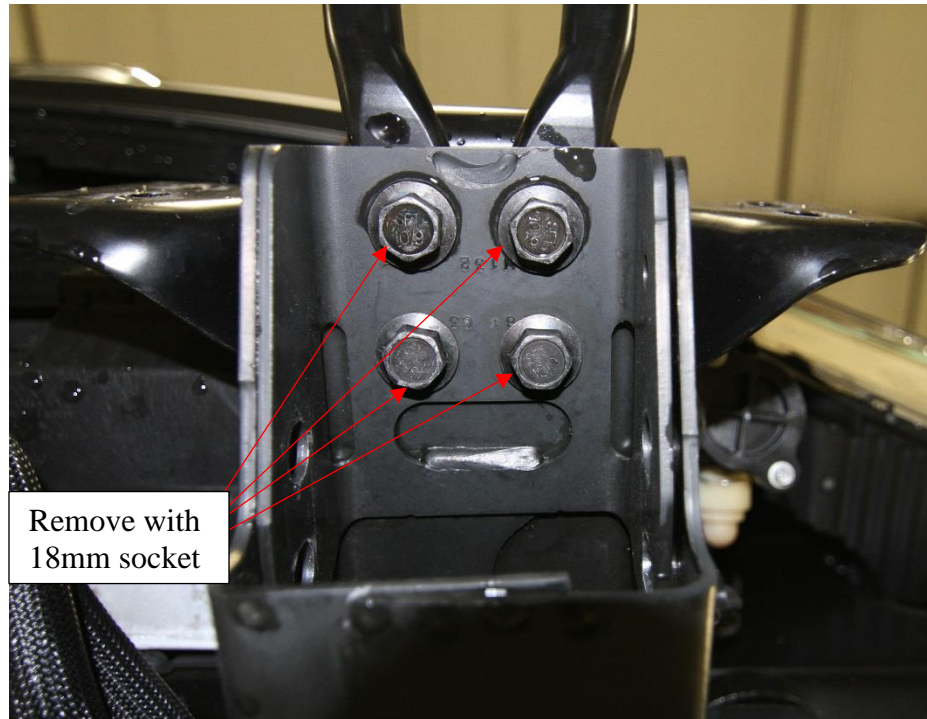


## Installation Instructions

### Winch Mount

Product Number: N4160, N4170

Application: 2017 Ford Super Duty



5. Next using 18mm socket remove the two nuts on either side of the frame attaching frame horns to frame. Set bolt strips and nuts aside as they will be used in the installation of Fab Fours bumper. (See image)



## Installation Instructions

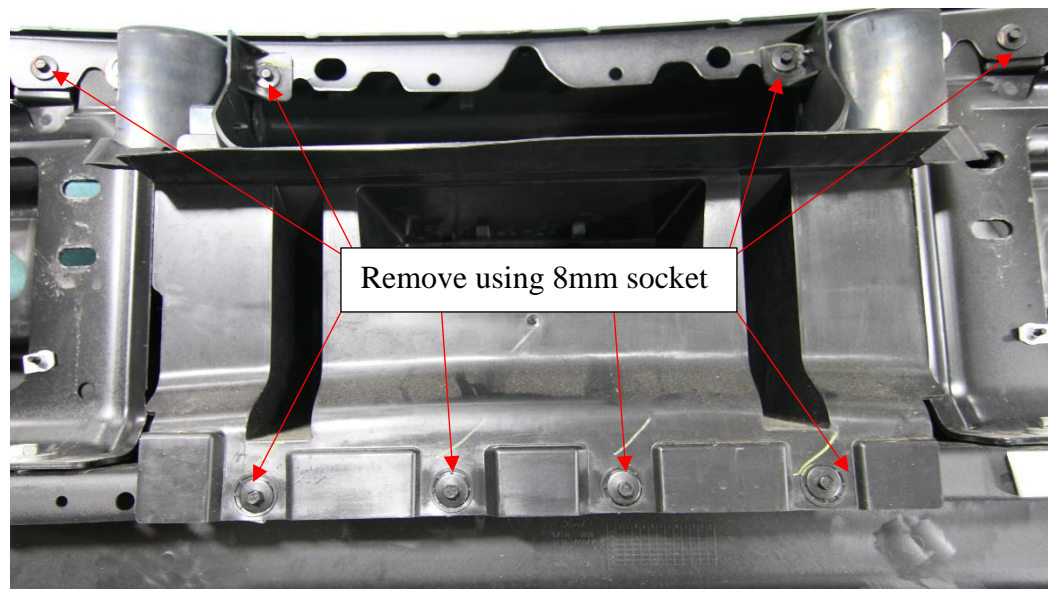
### Winch Mount

Product Number: N4160, N4170

Application: 2017 Ford Super Duty



6. With the bumper lying face down, begin removing the inner structure of OEM bumper. Start by removing 10 bolts using 8mm socket.





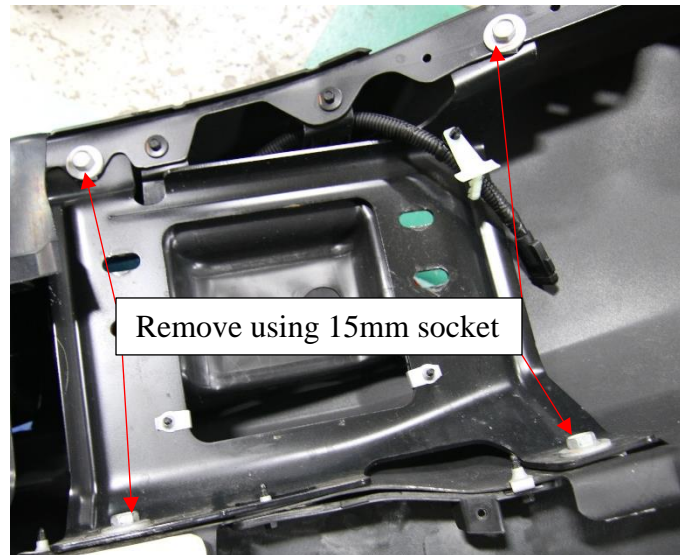
## Installation Instructions

### Winch Mount

Product Number: N4160, N4170

Application: 2017 Ford Super Duty

7. Using 15mm socket remove the 8 bolts that secure bumper mounting plate in bumper shell.



8. You can now remove the center inner structure from bumper shell.
9. With center out of bumper shell, remove 2 remaining 8mm bolts from each OEM mount.

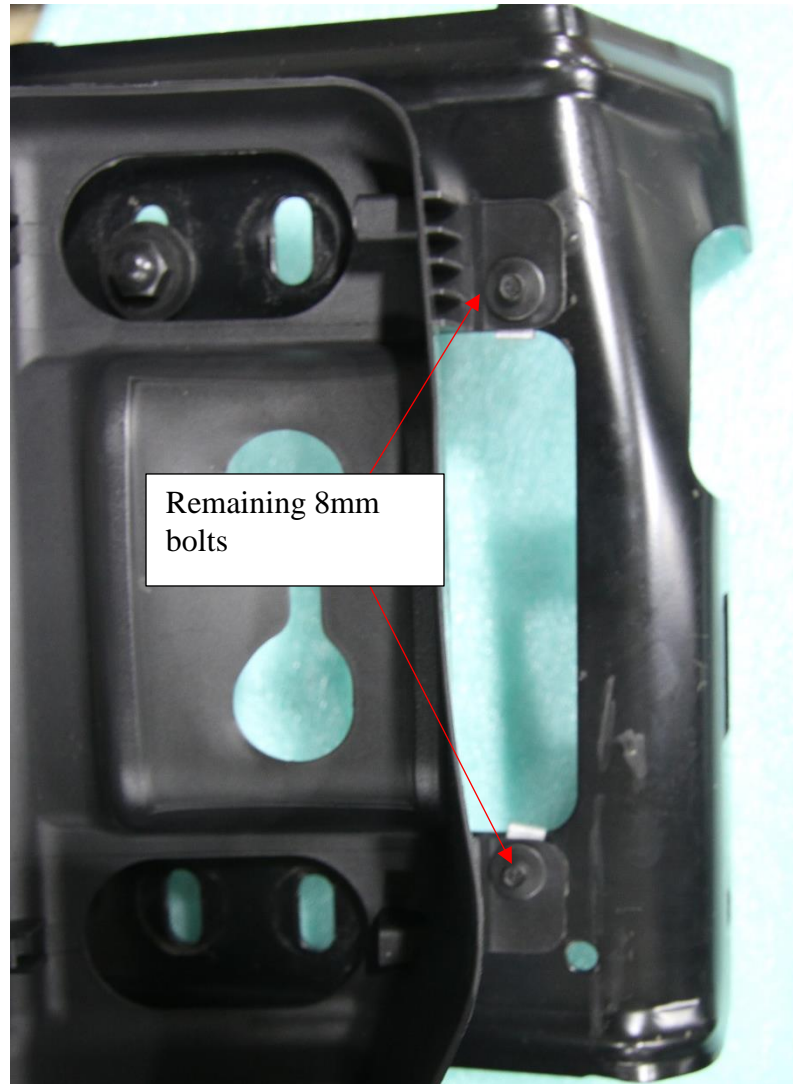


## Installation Instructions

### Winch Mount

Product Number: N4160, N4170

Application: 2017 Ford Super Duty



10. With the OEM mounts no longer attached to plastic center, you can now re-install them in to bumper shell using the 8 factory 15mm bolts.



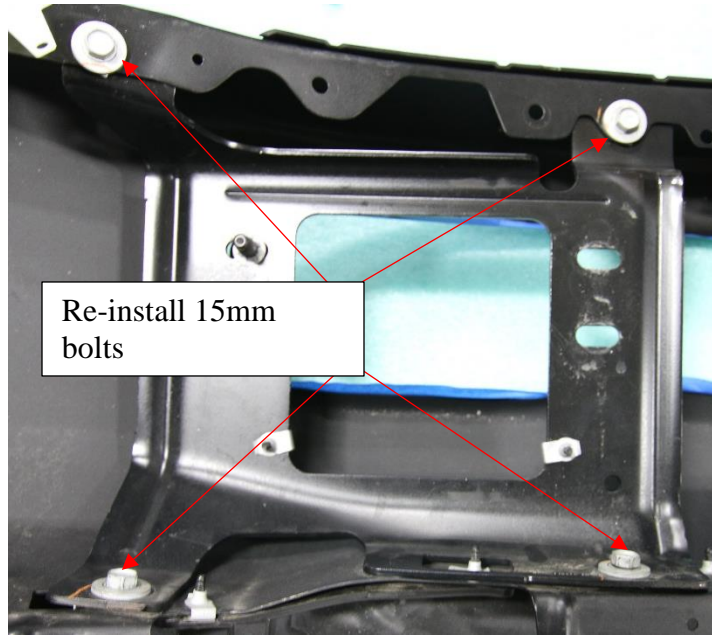


# Installation Instructions

## Winch Mount

Product Number: N4160, N4170

Application: 2017 Ford Super Duty





## Installation Instructions

### Winch Mount

Product Number: N4160, N4170

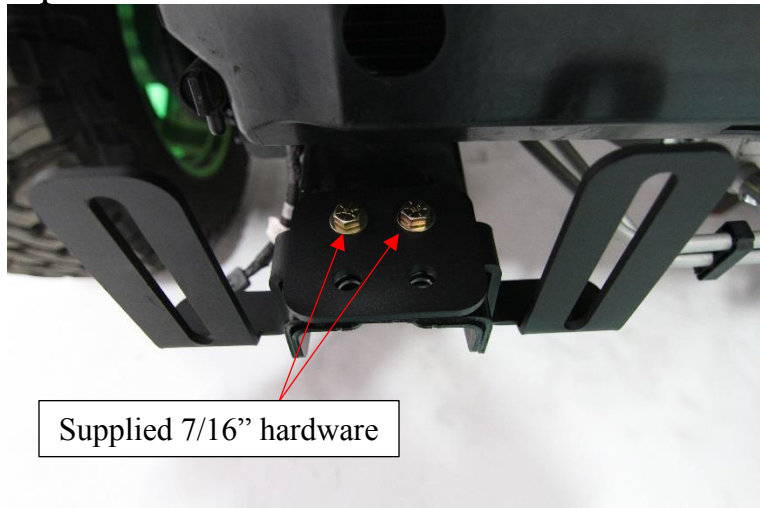
Application: 2017 Ford Super Duty

### **III. WINCH MOUNT PREPARATION**

1. If installing winch and roller fairlead into bumper, do it at this time. Follow the winch manufacturer's instructions for installation. If you are installing a winch with a pulling capacity of 12,000 lbs. or greater, the front face mounting holes must be used.
2. Next install supplied tow hooks and fully tighten.

### **IV. BUMPER INSTALLATION**

1. Start by loosely installing Fab Fours bumper replacement bracket as shown below.



2. Once the brackets are loosely installed, with the help of two other people, lift the bumper into place.
3. With the bumper in place loosely, install OEM bolt strips and hardware.



## Installation Instructions

### Winch Mount

Product Number: N4160, N4170

Application: 2017 Ford Super Duty

4. Next hold the bumper into desired position on the truck, and tighten one bolt on each side of bumper. This will help set the Fab Fours into the proper position.
5. With brackets in position, you can now tighten the brackets to the frame.
6. Once the brackets are tight, loosen the bumper.
7. With the bumper loose, you can now tilt the factory bumper. This will give you better access to the frame of vehicle for installation.



8. Next lift Fab Fours winch mount into position by sliding brackets inside frame rails.



## Installation Instructions

### Winch Mount

Product Number: N4160, N4170

Application: 2017 Ford Super Duty

9. With winch mount in position, loosely install  $\frac{1}{2}$ " hardware on either side of the frame. Followed by the  $\frac{7}{16}$ " hardware on the top of frame.
10. With all hardware loosely installed you can begin tightening winch mount hardware. Start with the  $\frac{7}{16}$ " hardware on the top of frame rails and then tighten  $\frac{1}{2}$ " hardware on either side of frame rails. Torque all bolts to 106 foot-pounds.
11. With the winch mount fully installed, you can now lift bumper into desired position and tighten the 8 factory bolts holding it in place. Also replace factory side mounts by re-installing the for 15mm bolts on each side. This can be done by reversing Step 2 of bumper removal.



## Installation Instructions

### Winch Mount

Product Number: N4160, N4170

Application: 2017 Ford Super Duty

#### V. Maintenance/Care

- Periodically check and tighten all fasteners.
- Stripped, fractured, or bent bolts or nuts need to be replaced.
- Keep all surfaces free of dirt, road grime, and standing water to ensure finish longevity.

#### VI. Contact Information

Fab Fours Inc.  
2213 Industrial Park Rd.  
Lancaster, SC 29720

Phone (866)-385-1905  
Fax (866)-574-1424  
Email [Support@fabfours.com](mailto:Support@fabfours.com)



More than expected... Better than expected