



WWW.SMITTYBILT.COM

## Installation Instructions

*Nerf-Step (Part # C01100CC)  
01-06 Chevy/GMC Silverado/Sierra  
Crew Cab, Short Bed*

**NOTE: Carefully read entire instructions thoroughly before attempting to install this part. Drilling is required for installing of these bars. It is recommended to have some additional help with the installation process.**

Parts Included	Qty	Tools Needed
5/16" x 1" carriage Bolt	12	Drill and 3/8" drill bit
5/16" Nut	12	1/2" wrench or ratchet with socket
3/8" Washer	12	



Picture is for sample use, may not be actual bars

**Step 1:** Open and identify the bars. The short end of the bar goes towards the front of the vehicle. Position the bar up to the truck approximately 3/4" to 1" from the front wheel well opening. (If you have over-sized tires you can mount the bar further back to insure you have tire-turning clearance). Make sure not to hit the cab brace: this will cause the step plate not to be parallel with the ground.

**Step 2:** Hold the bar on the underside of the truck with the angled flange on the bracket below the pinch weld. (Fig A) Use the slotted holes in the angled flange as a guide to mark the holes to be drilled into the pinch weld. (6 per side, the angle of the flange will appear to be at a different angle than the pinch weld this is normal and the bar will "set" properly when installed. ) Once holes are marked carefully set the bar to the side.

**For Technical Support/Warranty Information please call 310-762-9944**

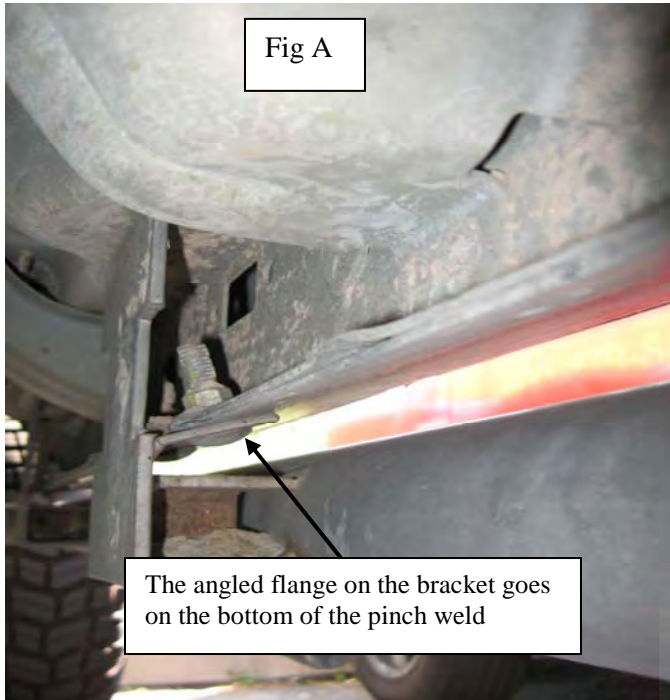
**Smittybilt, 400 West Artesia Blvd. Compton, CA 90220**



WWW.SMITTYBILT.COM

## Installation Instructions

*Nerf-Step (Part # C01100CC)  
01-06 Chevy/GMC Silverado/Sierra  
Crew Cab, Short Bed*



**NOTE:** Picture is for sample use only. Actual bracket may vary from picture.

**CAUTION:** Always check backside of pinch weld before drilling.

**Step 3:** Proceed to drill the marked holes out to 3/8". Be sure when drilling holes that you are drilling in the center of the marked pinch weld area. (Usually about 1/2" – 1/4" from the outside edge.) Doing this will insure ease of installation of the nuts and washers.

**Note:** You will not normally be using the holes in the top of the mounting brackets. These provide extra support if you plan on your bars impacting rocks or other hard surfaces. These can be secured by using #8- 1inch self-tapping screws.(not provided) Make sure no wires or other obstructions are in the way if used. Do not attach screws until bars is securely fastened to the pinch weld area.

**For Technical Support/Warranty Information please call 310-762-9944**

**Smittybilt, 400 West Artesia Blvd. Compton, CA 90220**



WWW.SMITTYBILT.COM

## Installation Instructions

*Nerf-Step (Part # C01100CC)  
01-06 Chevy/GMC Silverado/Sierra  
Crew Cab, Short Bed*

**Step 4:** After all 6 holes have been drilled hold the bar back up on the vehicle lining the holes up. Insert a 5/16" carriage bolt into each hold and fasten with a washer and nut. (Finger tighten only at this time.) Tighten the bolts at the front first, then move to the back of the bar. Holding the bar parallel with the truck tighten the rear bolts securely. Now tighten the remaining bolts in the middle.

Installation is now complete. Follow the same procedures for the opposite side.

### Product cleaning and maintenance instructions

**Stainless Steel Finish** – Aluminum polish may be used to polish small scratches and scuffs on the finish. Mild soap, window or glass cleaner may be used to clean the finish. **Dual state powder coat finish** – Mild soap, window or glass cleaner may be used to clean the finish. In order to protect the finish, you may wax your product on a regular basis with pure carnauba automotive wax. Do not use any types of soap, polish or was that contains abrasive that could damage the finish

### WARRANTY

Smittybilt's products are covered under the following limited warranties only. Note that the duration of the limited warranty differs according to the material and finish of the product purchased. Subject to the duration and conditions of the limited warranty stated below, Smittybilt warrants to the original retail purchaser that its products are free from defects in material and workmanship. All other warranties and representations express or implied are hereby disclaimed, including fitness for merchantability and buyer's intended use or purpose. All parts are sold "AS IS" except for the limited warranties granted herein. Buyer assumes all risks as to the selection, suitability and performance of all goods and products selected. This limited warranty does not cover damage or impairment in any part due to misuse, improper installation, accident or contact with on-road or off-road hazards, product modification, improper or inadequate cleaning and/or maintenance. Smittybilt is not responsible for items damaged during shipping. This warranty is not transferable from the original buyer. For the original Buyer to be eligible for the limited warranty coverage, the Buyer must provide proof of purchase. Smittybilt strongly recommends returning the warranty registration card.

Customer's remedy hereunder shall be limited only to repair or replacement (at Smittybilt's option) of any defective part(s) returned to Smittybilt at customer's expense. The determination of whether or not a returned part is defective or subject to coverage under the limited warranties stated herein shall be made at Smittybilt's sole discretion.

#### 1. Limited Lifetime Warranty on Stainless Steel Products -

Smittybilt stainless steel products carry the foregoing limited repair or replacement warranty **against workmanship and defects in the material** so long as the original purchaser retains the original stainless steel parts.

#### 2. Limited Five (5) Year / 50,000 Mile Pro-Rata Warranty (whichever occurs first) on Dual-Stage Powder Coating Products -

Smittybilt dual-stage powder coated products carry the foregoing limited repair or replacement warranty for a period of (5) years or 50,000 miles (whichever occurs first) from date of purchase **against workmanship and defects in the material**, provided that any claim submitted after (2.5) years from date of purchase shall, if accepted, be satisfied by Smittybilt offering customer a credit on the purchase of a replacement product equal to fifty percent (50%) of customer's initial purchase price.

Fichter Design's configuration protected by International Trade Dress Law. Fichter Designs licensed to Smittybilt Automotive Products are Protected by U.S. patent law and International Copy Right Law. US Patent #6588783 and #6874801 other patents and continuances pending. All Intellectual Property & Patent infringements will be prosecuted to the full extent of the law.

**For Technical Support/Warranty Information please call 310-762-9944**

**Smittybilt, 400 West Artesia Blvd. Compton, CA 90220**



WWW.SMITTYBILT.COM

## **Installation Instructions**

*Nerf-Step (Part # C01100CC)  
01-06 Chevy/GMC Silverado/Sierra  
Crew Cab, Short Bed*

---

**For Technical Support/Warranty Information please call 310-762-9944**

---

**Smittybilt, 400 West Artesia Blvd. Compton, CA 90220**



WWW.SMITTYBILT.COM

## **Installation Instructions**

*Nerf-Step (Part # C01100CC)  
01-06 Chevy/GMC Silverado/Sierra  
Crew Cab, Short Bed*

---

**For Technical Support/Warranty Information please call 310-762-9944**

---

**Smittybilt, 400 West Artesia Blvd. Compton, CA 90220**