



Installation Instructions

Bull Bar (#51011&51012)
99-06 Chevy Silverado 1500 1/2 Ton

QTY	DESCRIPTION
1	Grille Saver
1	Lower Support Bracket-left
1	Lower Support Bracket-right
2	M12 x 40 Hex Bolt-zinc plated
4	M12 Split lock washers-zinc plated
4	M12 Flatwasher-zinc plated
4	M10 x 35 Hex Bolt-zinc plated
4	M10 Hex Nut-zinc plated
8	M10 Flatwasher-zinc plated
4	M10 Split lock washers

Step One: Remove the factory tow hooks and hardware from both sides and retain for later use. (NOTE: In order to use factory tow hooks with Front Guard, you must reverse them before installing the Lower Support Brackets.) (Hardware is included for vehicles not equipped with factory tow hooks)

Step Two: Once the tow hooks are swapped, the slotted hole on Bottom Support Brackets where vertical bolt attaches, needs to be slightly enlarged towards the center of the truck. (NOTE: If the factory tow hooks are not going to be reused, the Lower Support Brackets do not have to be modified.)

Step Three: Using the factory hardware removed in Step Two, loosely attach Bottom Support Brackets to Vehicle (Figure 2).

Step Four: Locate M10 x 35 Hex Head Bolts, M10 hex nuts, M10 Lock Washers, and M10 Flat Washers. Position the Guard to the inside of the Bottom Support Brackets. Loosely attach Guard to Bottom Support Brackets using the hardware listed in this step (Figure 1-2).

Step Five: After checking for proper clearance and alignment of the Front Guard on the vehicle fully tighten all hardware.

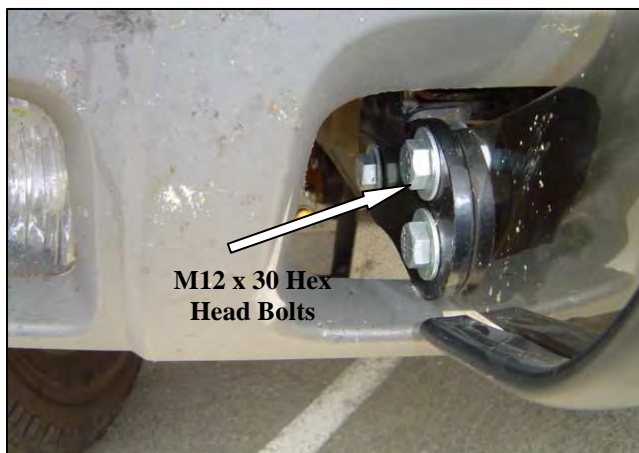


Figure 1

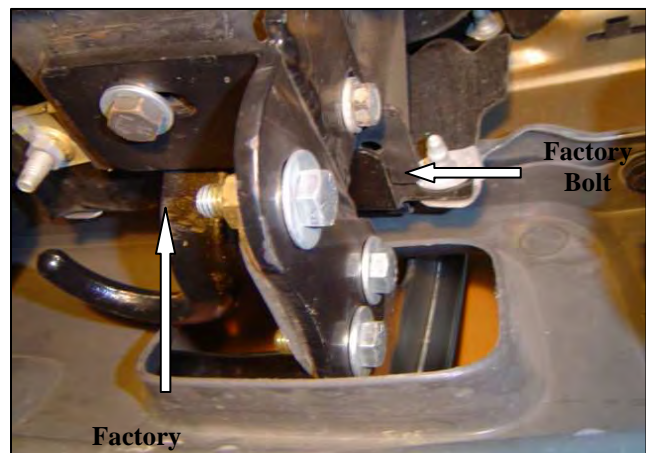


Figure 2

NOTE: Pictures are for reference only. Actual brackets may vary, although installation is similar

For Technical Support/Warranty Information please call 310-762-9944

Smittybilt, 1600 Walnut Parkway, Rancho Dominguez, CA 90220



Installation Instructions

*Bull Bar (#51011&51012)
99-06 Chevy Silverado 1500 1/2 Ton*

Cleaning and Maintenance

To protect your investment, wax this product after installing. Regular waxing is recommended to add a protective layer over the finish. Do not use any type of polish or wax that may contain abrasives that could damage the finish.

For stainless steel: Aluminum polish may be used to polish small scratches and scuffs on the finish. Mild soap, window or glass cleaner may be used also.

For gloss black finishes: Mild soap, window and glass cleaner may be used.

LIMITED WARRANTY

Smittybilt (The Company) warrants to the original purchaser of this product that should the product or any part thereof, under normal use and conditions, be proven defective in material or workmanship within the warranty period of 5 years from the date of purchase, such defect(s) will be repaired or replaced (At the Company's option) without charge for parts or labor. To obtain repair or replacement within the terms of the warranty, the product is to be delivered with proof of warranty coverage (e.g. dated bill of sale, receipt), specification of defect, freight pre-paid with Returns Good Authorization Number from Smittybilt to place of purchase. Items returned to Smittybilt without a Returns Authorization Number will be refused and returned to sender at the senders' expense.

This warranty does not apply to any product or part thereof which, in the opinion of the Company, has suffered or been damaged through altercation, improper installation, mishandling, misuse, neglect accident or acts of nature. **THE EXTENT OF THE COMPANY'S LIABILITY UNDER THIS WARRANTY IS LIMITED TO THE REPAIR OR REPLACEMENT PROVIDED ABOVE AND, IN NO EVENT, SHALL THE COMPANY'S LIABILITY EXCEED THE PURCHASE PRICE PAID BY THE PURCHASER FOR THIS PRODUCT.**

This warranty is in lieu of all expressed warranties and liabilities. ANY IMPLIED WARRANTIES, INCLUDING ANY IMPLIED WARRANTY OF MERCHANTABILITY SHALL BE LIMITED TO THE DURATION OF THIS WRITTEN WARRANTY. ANY ACTION FOR BREACH OF ANY WARRANTY HEREUNDER INCLUDING ANY IMPLIED WARRANTY OF MERCHANTABILITY MUST BE BROUGHT WITHIN A PERIOD OF 90 DAYS FROM DATE OF ORIGINAL PURCHASE. IN NO CASE SHALL THE COMPANY BE LIABLE FOR ANY CONSEQUENTIAL OR INCIDENTAL DAMAGES FOR BREACH OF THIS OR ANY OTHER WARRANTY, EXPRESSED OR IMPLIED, WHATSOEVER. No person or representative is authorized to assume for the company any liability other than expressed herein in connection with the sale of this product. Some states do not allow limitations on how long an implied warranty lasts or the exclusion or limitation of incidental or consequential damage, therefore above limitations may not apply to you. This warranty gives the purchaser specific legal rights. The purchaser may have additional rights, which vary from state to state.

Some states do not allow limitations on how long an implied warranty lasts or the exclusion or limitation of incidental or consequential damage, therefore above limitations may not apply to you. This warranty gives the purchaser specific legal rights. The purchaser may have additional rights, which vary from state to state.

For Technical Support/Warranty Information please call 310-762-9944

Smittybilt, 1600 Walnut Parkway, Rancho Dominguez, CA 90220