



WWW.SMITYBILT.COM

Installation Instructions

G.E.A.R. Overhead

97-06 Wrangler (Part # 56650xx)

NOTE: Carefully read entire instructions thoroughly before attempting to install this part.

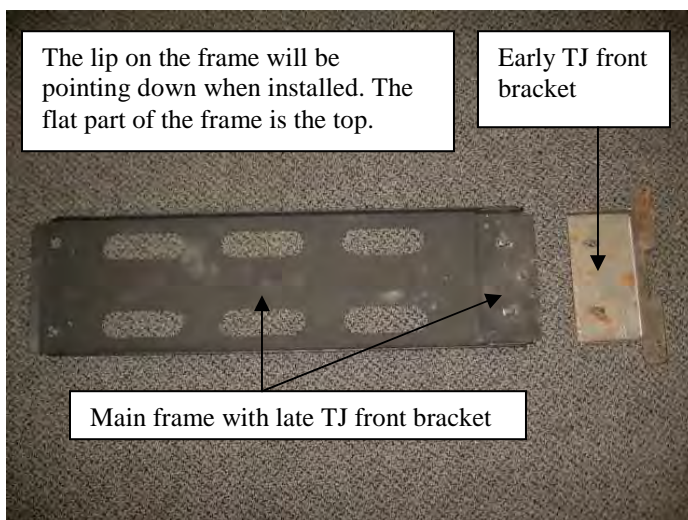
Parts Included	Qty
Overhead Main Frame	1
97-01 Front Bracket	1
02-06 Front Bracket	1
02-06 Front Adapter Bracket	1
Sport Bar Clamp	2
Clamp Sleeve	2
Gear Cover w/pouches	1

Parts Included	Qty
Footman Loop	2
#10 x 1/2" Machine Screw	2
Cap Nut	2
3/8" x 1" Hex Bolt	2
3/8" x 1 1/4" Hex Bolt	1
3/8" Hex Nut	3
3/8" Flat Washer	6

NOTE: It is recommended to have the soft top folded down or hardtop removed when installing this product

Step 1: Lay the over head main frame on a flat surface. (Fig A)

Step 2: Determine which front mounting bracket you will need and mount bracket loosely to frame using the included 3/8" x 1" hardware. (Fig A) (The flat bracket is for late TJ's and the bracket with side extensions is for early TJ's.)



(Fig A)



(Fig B)

For Technical Support/Warranty Information please call 310-762-9944

Smittybilt, 400 West Artesia Blvd, Compton, CA 90220



WWW.SMITTYBILT.COM

Installation Instructions

G.E.A.R. Overhead

97-06 Wrangler (Part # 56650xx)

Step 3: Lay the G.E.A.R. cover over the frame as it lies on the floor. (Fig B)

Step 4: Flip the frame over and secure by fastening the Velcro straps. (Fig C)

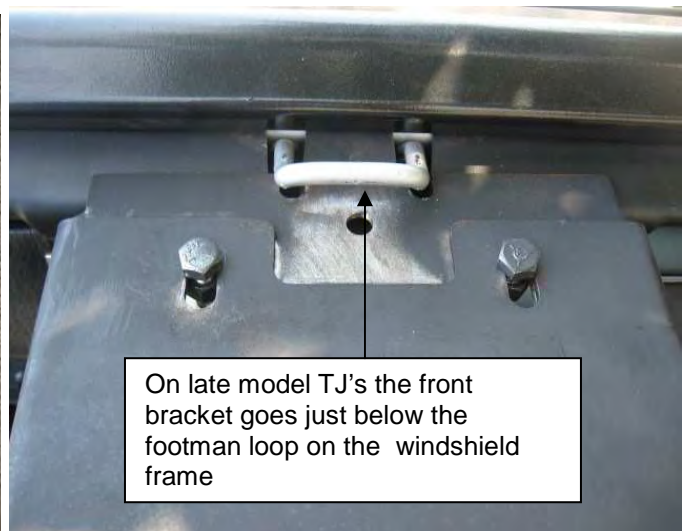
Step 5: If installing on an early model TJ remove the inner two bolts on both the driver and passenger side sun visors. Loosely attach the front bracket to the windshield using the hardware you just removed. (Be sure to mount sun visors back on over the bracket.) The rear of the main frame rests on top of the center sport bar.

On late model TJ's the front bracket goes just below the footman loop on the windshield frame. (Fig D) The adapter bracket goes over the top and loosely attach using the 3/8 x 1 1/4" hardware. (Fig E) The rear of the main frame rests on top of the center sport bar.

Do not fully tighten hardware at this time.



(Fig C)



On late model TJ's the front bracket goes just below the footman loop on the windshield frame

(Fig D)

Step 6: Slide the clamp sleeves over the rear clamp straps. (Fig F) Depending on the size/padding on your center sport bar the sleeve can be trimmed if necessary to fit accordingly.

For Technical Support/Warranty Information please call 310-762-9944

Smittybilt, 400 West Artesia Blvd, Compton, CA 90220

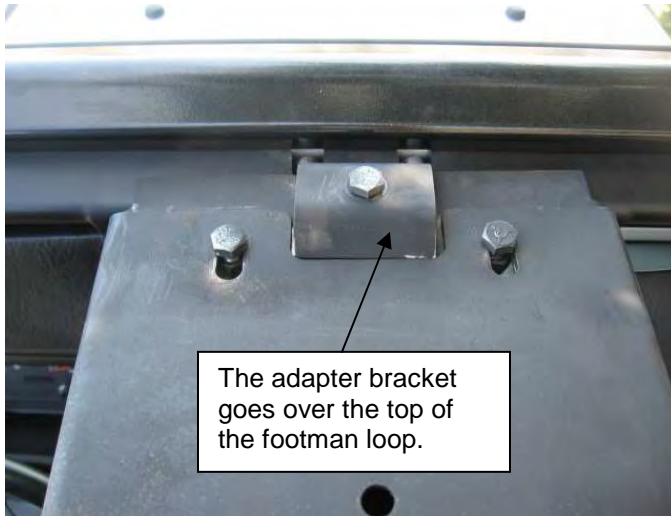


WWW.SMITTYBILT.COM

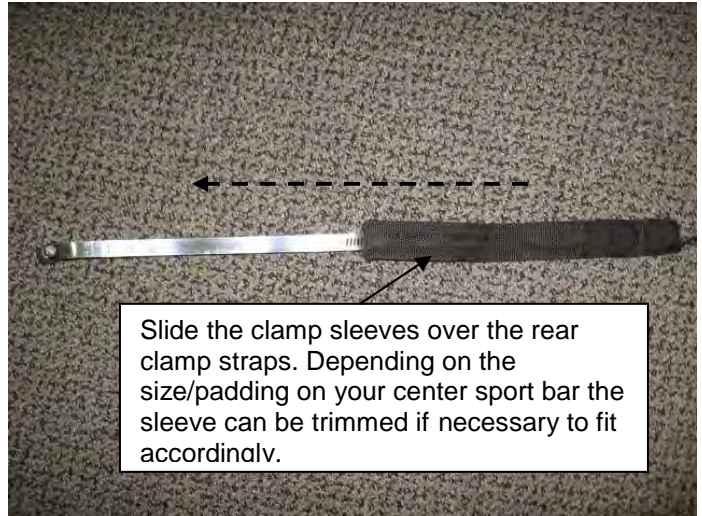
Installation Instructions

G.E.A.R. Overhead

97-06 Wrangler (Part # 56650xx)



(Fig E)

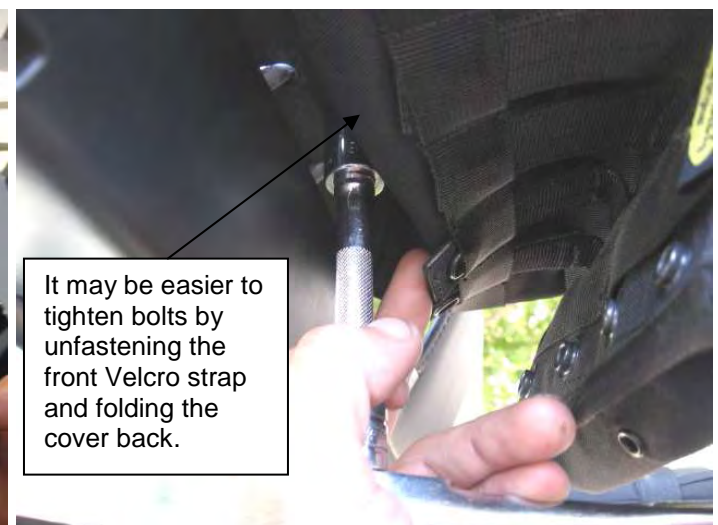


(Fig F)

STEP 7: Slide the rear clamp straps around the center sport bar and through the slots in the rear of the overhead frame. (Fig G)



(Fig G)



(Fig H)

For Technical Support/Warranty Information please call 310-762-9944

Smittybilt, 400 West Artesia Blvd, Compton, CA 90220



WWW.SMITTYBILT.COM

Installation Instructions

G.E.A.R. Overhead

97-06 Wrangler (Part # 56650xx)

Step 8: Make sure the overhead is straight and then begin to secure, by tightening all of the hardware. (Early TJ's front two 3/8" bolts and rear sport bar straps) (Late TJ's front three 3/8" bolts and rear sport bar straps.) It may be easier to tighten bolts by unfastening the front Velcro strap and folding the cover back. (Fig H) Check to make sure all Velcro straps are secure after tightening all mounting hardware. Installation is now complete. (Fig I,J)



(Fig I)



(Fig J)

Step 9: (Late TJ's only) If you're using a standard top/bikini and want to utilize the center strap, attach the included footman loop to the overhead. First determine the best location; depending on the style it may be in the front or the rear. Once you have determined the best location, hold the footman loop up and mark the two holes. Then drill the two holes using a 1/4 drill bit and attach with included screw and cap-nut. You can either install it over the G.E.A.R. cover or drill through both the cover and frame, or drill through the frame and carefully make a small cut in the cover to expose the footman loop. (Fig K, L)

For Technical Support/Warranty Information please call 310-762-9944

Smittybilt, 400 West Artesia Blvd, Compton, CA 90220



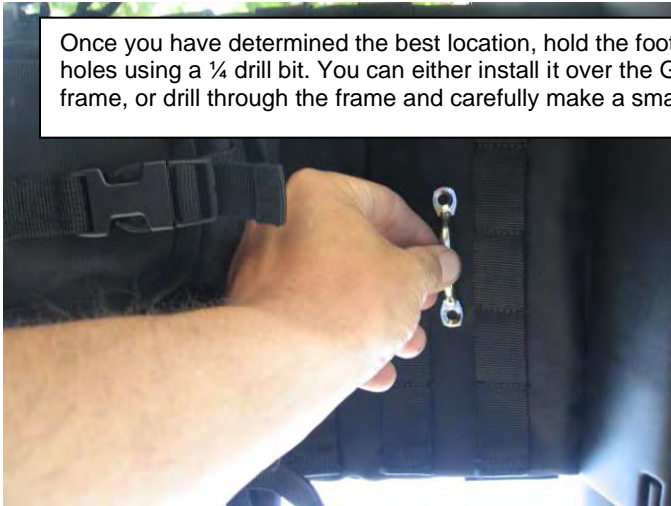
WWW.SMITYBILT.COM

Installation Instructions

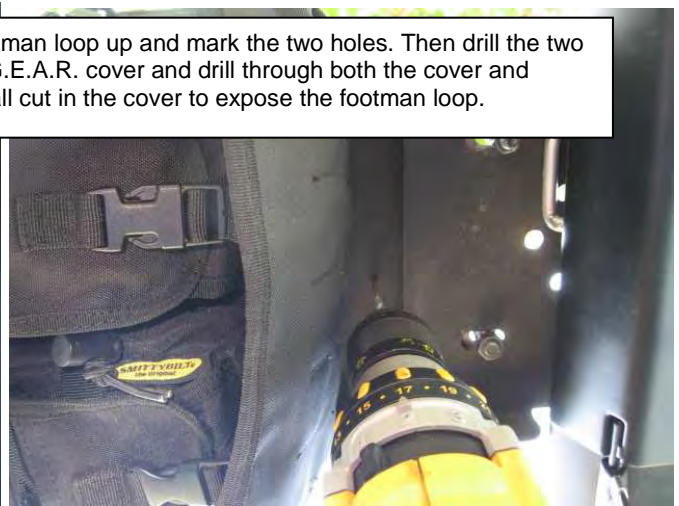
G.E.A.R. Overhead

97-06 Wrangler (Part # 56650xx)

Once you have determined the best location, hold the footman loop up and mark the two holes. Then drill the two holes using a ¼ drill bit. You can either install it over the G.E.A.R. cover and drill through both the cover and frame, or drill through the frame and carefully make a small cut in the cover to expose the footman loop.



(Fig K)



(Fig L)

NOTE: The pouches can be installed in a variety of places, by sliding the pouch straps through the webbing on the overhead (Fig M) then fold the strap back up and place it through the webbing on the back of the pouch.(Fig N) Then slide the pouch strap through the next row of webbing on the overhead (Fig O) and then secure by fastening the snaps. (Fig P)



(Fig M)



(Fig N)

For Technical Support/Warranty Information please call 310-762-9944

Smittybilt, 400 West Artesia Blvd, Compton, CA 90220



WWW.SMITTYBILT.COM

Installation Instructions

G.E.A.R. Overhead

97-06 Wrangler (Part # 56650xx)



(Fig O)



(Fig P)

NOTE: When traveling be sure pouches are closed and secured.

LIMITED WARRANTY

Smittybilt (The Company) warrants to the original purchaser of this product that should the product or any part thereof, under normal use and conditions, be proven defective in material or workmanship within the warranty period of 90 days from the date of purchase, such defect(s) will be repaired or replaced (At the Company's option) without charge for parts or labor. To obtain repair or replacement within the terms of the warranty, the product is to be delivered with proof of warranty coverage (e.g. dated bill of sale, receipt), specification of defect, freight pre-paid with Returns Good Authorization Number from Smittybilt to place of purchase. Items returned to Smittybilt without a Returns Authorization Number will be refused and returned to sender at the senders' expense.

This warranty does not apply to any product or part thereof which, in the opinion of the Company, has suffered or been damaged through altercation, improper installation, mishandling, misuse, neglect accident or acts of nature. **THE EXTENT OF THE COMPANY'S LIABILITY UNDER THIS WARRANTY IS LIMITED TO THE REPAIR OR REPLACEMENT PROVIDED ABOVE AND, IN NO EVENT, SHALL THE COMPANY'S LIABILITY EXCEED THE PURCHASE PRICE PAID BY THE PURCHASER FOR THIS PRODUCT.**

This warranty is in lieu of all expressed warranties and liabilities. ANY IMPLIED WARRANTIES, INCLUDING ANY IMPLIED WARRANTY OF MERCHANTABILITY SHALL BE LIMITED TO THE DURATION OF THIS WRITTEN WARRANTY. ANY ACTION FOR BREACH OF ANY WARRANTY HEREUNDER INCLUDING ANY IMPLIED WARRANTY OF MERCHANTABILITY MUST BE BROUGHT WITHIN A PERIOD OF 90 DAYS FROM DATE OF ORIGINAL PURCHASE. IN NO CASE SHALL THE COMPANY BE LIABLE FOR ANY CONSEQUENTIAL OR INCIDENTAL DAMAGES FOR BREACH OF THIS OR ANY OTHER WARRANTY, EXPRESSED OR IMPLIED, WHATSOEVER. No person or representative is authorized to assume for the company any liability other than expressed herein in connection with the sale of this product. Some states do not allow limitations on how long an implied warranty lasts or the exclusion or limitation of incidental or consequential damage, therefore above limitations may not apply to you. This warranty gives the purchaser specific legal rights. The purchaser may have additional rights, which vary from state to state. Some states do not allow limitations on how long an implied warranty lasts or the exclusion or limitation of incidental or consequential damage, therefore above limitations may not apply to you. This warranty gives the purchaser specific legal rights. The purchaser may have additional rights, which vary from state to state.

For Technical Support/Warranty Information please call 310-762-9944

Smittybilt, 400 West Artesia Blvd, Compton, CA 90220