



WWW.SMITTYBILT.COM

Installation Instructions

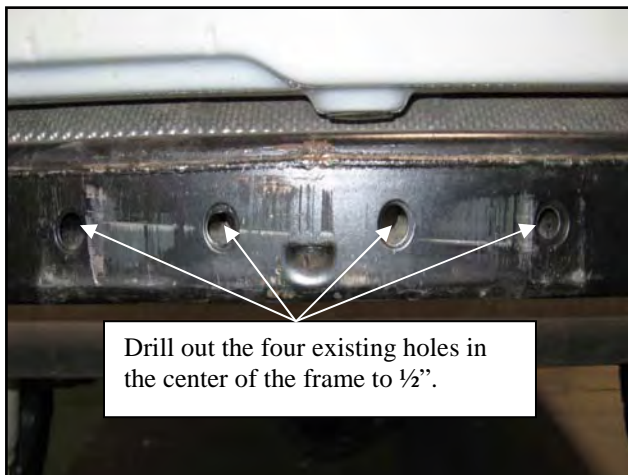
XRC Rear Bumper
(Part# 76655)
07-08 Jeep Wrangler (JK)

NOTE: Carefully read entire instructions before installing this product. It is recommend having assistance for ease of installation.

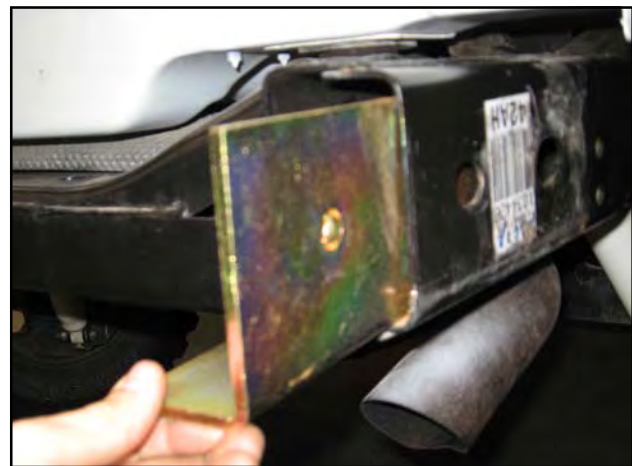
Parts Included	Qty	Parts Included	Qty
XRC Rear Bumper	1	½" Flat Washer (USS)	8
Nut Plate	2	½" Flat Washer (SAE)	4
½"-13 x 4 ½" Hex Bolt	4	½" Lock Nut	4
½"-13 x 1 ¼" Hex Bolt	4		

Step 1: Remove the factory rear bumper and support brackets from the vehicle.

Step 2: Drill out the four holes in the center of the frame to ½". (Fig A)



(Fig A)



(Fig B)

Step 3: Insert nut plate into the inside of the rear frame rails lining up the nuts in the plate with the holes in the frame rail. (Fig B)

Step 4: Position the rear bumper up into place, aligning the four holes in the center of the frame with the holes on the hitch plate portion of the bumper. (Fig D) (This step may require assistance) Attach using the supplied ½"x 4 ½" bolts with flat washers and lock nuts. Do not completely tighten at this time.

For Technical Support/Warranty Information please call 310-762-9944

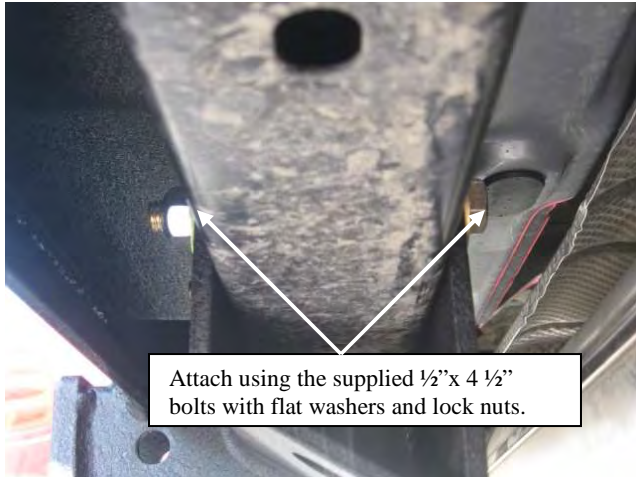
Smittybilt, 400 West Artesia Blvd, Compton, CA 90220



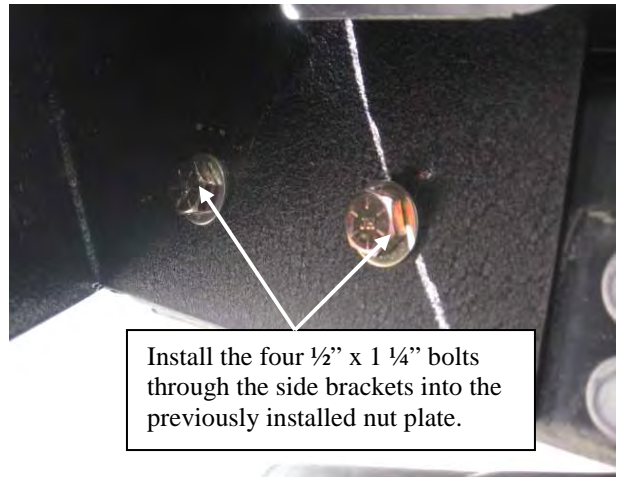
WWW.SMITTYBILT.COM

Installation Instructions

XRC Rear Bumper
(Part# 76655)
07-08 Jeep Wrangler (JK)



(Fig C)



(Fig D)

Step 5: Install the four $\frac{1}{2}$ " x $1\frac{1}{4}$ " bolts through the side brackets into the previously installed nut plate.

Step 6: Make sure bumper is level and the completely tighten all hardware. Torque bolts to 90 ft-lb.

Step 7: Installation is now complete. (Fig E)



(Fig E)

For Technical Support/Warranty Information please call 310-762-9944

Smittybilt, 400 West Artesia Blvd, Compton, CA 90220



WWW.SMITTYBILT.COM

Installation Instructions

XRC Rear Bumper

(Part# 76655)

07-08 Jeep Wrangler (JK)

CARE AND MAINTENANCE

To protect your investment it is recommended to regularly wash and wax this part. Do not use any type of cleaners that contain abrasives that may damage the finish of your part.

LIMITED WARRANTY

Smittybilt (The Company) warrants to the original purchaser of this product that should the product or any part thereof, under normal use and conditions, be proven defective in material or workmanship within 3 years from the original date of purchase, such defect(s) will be repaired or replaced (At the Company's option) without charge for parts or labor.

To obtain repair or replacement within the terms of the warranty, the product is to be delivered with proof of warranty coverage (e.g. dated bill of sale, receipt), specification of defect, freight pre-paid with Returns Good Authorization Number from Smittybilt to place of purchase. Items returned to Smittybilt without a Returns Authorization Number will be refused and returned to sender at the sender's expense.

This warranty does not apply to any product or part thereof which, in the opinion of the Company, has suffered or been damaged through altercation, improper installation, mishandling, misuse, neglect accident or acts of nature. **THE EXTENT OF THE COMPANY'S LIABILITY UNDER THIS WARRANTY IS LIMITED TO THE REPAIR OR REPLACEMENT PROVIDED ABOVE AND, IN NO EVENT, SHALL THE COMPANY'S LIABILITY EXCEED THE PURCHASE PRICE PAID BY THE PURCHASER FOR THIS PRODUCT.**

This warranty is in lieu of all expressed warranties and liabilities. ANY IMPLIED WARRANTIES, INCLUDING ANY IMPLIED WARRANTY OF MERCHANTABILITY SHALL BE LIMITED TO THE DURATION OF THIS WRITTEN WARRANTY. ANY ACTION FOR BREACH OF ANY WARRANTY HEREUNDER INCLUDING ANY IMPLIED WARRANTY OF MERCHANTABILITY MUST BE BROUGHT WITHIN A PERIOD OF 90 DAYS FROM DATE OF ORIGINAL PURCHASE. IN NO CASE SHALL THE COMPANY BE LIABLE FOR ANY CONSEQUENTIAL OR INCIDENTAL DAMAGES FOR BREACH OF THIS OR ANY OTHER WARRANTY, EXPRESSED OR IMPLIED, WHATSOEVER. No person or representative is authorized to assume for the company any liability other than expressed herein in connection with the sale of this product.

Some states do not allow limitations on how long an implied warranty lasts or the exclusion or limitation of incidental or consequential damage, therefore above limitations may not apply to you. This warranty gives the purchaser specific legal rights. The purchaser may have additional rights, which vary from state to state.

Limited Five (5) Year / 50,000 Mile Pro-Rata Warranty (whichever occurs first) on Dual-Stage Powder Coating Products -

Smittybilt dual-stage powder coated products carry the foregoing limited repair or replacement warranty for a period of (5) years or 50,000 miles (whichever occurs first) from date of purchase **against workmanship and defects in the material**, provided that any claim submitted after (2.5) years from date of purchase shall, if accepted, be satisfied by Smittybilt offering customer a credit on the purchase of a replacement product equal to fifty percent (50%) of customer's initial purchase price

For Technical Support/Warranty Information please call 310-762-9944

Smittybilt, 400 West Artesia Blvd, Compton, CA 90220



WWW.SMITTYBILT.COM

Installation Instructions

XRC Rear Bumper
(Part# 76655)
07-08 Jeep Wrangler (JK)

For Technical Support/Warranty Information please call 310-762-9944

Smittybilt, 400 West Artesia Blvd, Compton, CA 90220



WWW.SMITTYBILT.COM

Installation Instructions

XRC Rear Bumper
(Part# 76655)
07-08 Jeep Wrangler (JK)

For Technical Support/Warranty Information please call 310-762-9944

Smittybilt, 400 West Artesia Blvd, Compton, CA 90220