



# Installation Instructions

## Rear Black Steel Bumper

Product Number: T1050

Application: '03-'09 RAM 2500-3500

### SAFETY

**Your safety and the safety of others is very important.**

- In order to help you make informed decisions about safety, we have provided installation instructions and other information.
- These instructions alert you to potential hazards that could hurt you or others.
- Please do a job safety analysis (JSA) before each task to identify potential hazards for your situation and remove/protect against them.
- You must use your own good judgment, and take your time.

**Read and understand all safety precautions and instructions before installing this product.**

THIS PRODUCT IS FOR OFFROAD USE ONLY. ALL LIABILITY FOR INSTALLATION AND USE RESTS WITH THE OWNER.

**CARELESS INSTALLATION AND OPERATION CAN RESULT IN SERIOUS INJURY OR EQUIPMENT DAMAGE.**

### Injury hazard

**Failure to observe these instructions could lead to severe injury or death.**

- Always** remove jewelry and wear eye protection.
- Always** use extreme caution when jacking up a vehicle for work. Set emergency brake and use tire blocks. Locate and use the vehicle manufacturers designated lifting points. Use jack stands.
- Always** use appropriate and adequate care in lifting components into place.
- Always** insure components will remain secure during installation and operation.
- Always** wear safety glasses when installing this kit. A drilling operation will cause flying metal chips. Flying chips can cause serious eye injury.
- Always** use extreme caution when drilling on a vehicle. Thoroughly inspect the area to be drilled (on both sides of material) prior to drilling, and relocate any objects that may be damaged.
- Always** use extreme caution when cutting and trimming during fitting.
- Always** tighten all nuts and bolts securely per installation instructions.
- Always** route electrical cables carefully. Avoid moving parts, components that become hot and rough or sharp edges.
- Always** insulate and protect all exposed wiring and electrical terminals.
- Always** perform regular inspections and maintenance on mounts and related hardware.



### I. Parts List

T1050 Ram HD rear replacement bumper  
T1050-HW fastener kit  
Tag Light  
2 License plate mounting inserts  
2 Reverse lights, mounting grommets, and wire pigtails  
4 Backup sensor grommets and plugs  
Instruction Manual

### II. Tools Required

Socket Wrench with Extension  
3/4", 15mm, & 21mm Sockets  
3/4" Box End Wrench  
T-25 Torx Driver  
Drill and 1/4" Drill Bit.

### III. Removal

1. Remove license plate (to reveal two mounting bolts).
2. Remove the (4) Torx screws from the trailer plug, pull plug through bumper, slide red tab toward wires and remove trailer plug.
3. Remove license plate light plugs by sliding red tab toward wires and pressing down on tab.
4. Locate and remove (2) bolts above frame-rails using 15mm socket.
5. Pull Christmas-tree clips (holding wire harness) from each frame rail in order to clear tab-nut.
6. Remove (8) stock fasteners from frame-rails using 15mm and 21mm sockets (4 on each side).

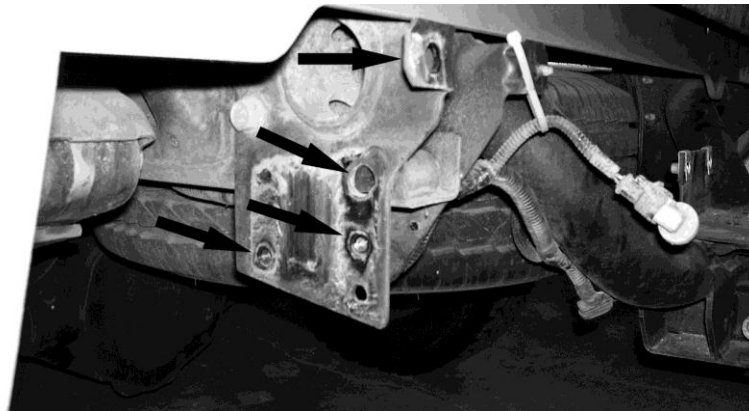


Figure 1 - Fastener Locations



## Installation Instructions Rear Black Steel Bumper

Product Number: T1050

Application: '03-'09 RAM 2500-3500

### IV. Installation

1. Replace OEM bumper with the Black Steel rear bumper assembly. Use the OEM screws and nut plates to fasten the bumper to the frame / hitch assembly. Do not fully tighten
2. Use the provided spacers (may be in the hardware kit or welded to the bumper) to offset the bottom of the bumper from the hitch mounting flange. Fasten with the provided 9/16" screws, washers, lock washers, and nuts. Do not fully tighten
3. Level and align the bumper in relation to the truck bed. Fully tighten all fasteners.
4. Slowly lower the tailgate to ensure there will be no interference. If required, loosen the frame bolts / hitch bolts and adjust alignment of the bumper.
5. Install tag light into the 1 1/4" hole provided in the center section. The powder coating may need to be removed from the hole for proper grounding. Connect wire into the hot wire of OEM tag light circuit. Verify operation.
6. Reinstall the trailer plug receptacle with the OEM fasteners. Reconnect the plug harness.
7. Reinstall license plate with provided plastic inserts
8. Install grommets into sensor holes. If equipped, insert sensors from the back side. If not equipped, install provided plugs into the grommets.
9. Insert light grommets into oval cut-outs and press lights in from the front. Wire as desired.
10. Secure all loose wiring and harnesses to the frame or bumper with zip ties.





## Installation Instructions

### Rear Black Steel Bumper

Product Number: T1050

Application: '03-'09 RAM 2500-3500

#### V. Maintenance/Care

- Periodically check and tighten all nuts.
- Stripped, fractured, or bent bolts or nuts need to be replaced.

#### VI. Contact Information

Fab Fours Inc.  
1312 Camp Creek Rd.  
Lancaster, SC 29720

Phone (866)-385-1905  
Fax (866)-574-1424  
Email [Support@fabfours.com](mailto:Support@fabfours.com)



More than expected... Better than expected

