



34935 Flyover Ct. Bakersfield, CA 93308
 Phone: (661) 588-8085 | Fax: (661) 588-8295

INSTALL INSTRUCTIONS:

Cognito HD Fixed Length
 Track Bar for 2014-2020
 Ram 2500 Trucks & 2013-
 2020 Ram 3500 Trucks
 SKU: 115-90920



PARTS LIST FOR SKU: 115-90920

QTY.	PART #	DESCRIPTION
4	6497	1" RAM HEIM SPACER
2	6564	1" HEIM BUSHING
1	8750	RAM FIXED LENGTH TRACK BAR FOR COGNITO LEVELING KIT
2	HARDWARE-IRR-1.75	1.75" INTERNAL RETAINING RING, YELLOW ZINC
2	UNI-BALL-COM16T-F2	UNIBALL COM16T-F2

WARNING

Please read this entire instruction sheet before beginning installation. Proper installation of these components requires a qualified mechanic. Always wear safety glasses when using power tools, and take appropriate precautions when working under a vehicle. If these instructions are not properly followed you may jeopardize your, and your passenger's safety, and severe frame, suspension or tire damage may also result from improper installation.

REQUIREMENTS

- Installation requires a qualified mechanic.
- Read instructions carefully and study the pictures before attempting installation.
- Check the parts and hardware packages against the parts list to assure that your kit is complete.

TECHNICAL INFORMATION

- A ratchet strap is required for this install to hold and adjust the axle.
- OEM track bar hardware is to be reused.

INSTALLATION

1. Start by racking the vehicle and hoisting it off the ground so that the suspension is at full droop. If no hoist is available, jack the truck off the ground and support properly with jack stands. **NEVER WORK ON AN UNSUPPORTED VEHICLE.**
2. Attach a ratchet strap to the following locations on the frame and axle to hold the axle in place during disassembly. Tighten the ratchet strap enough to hold the front axle in position. Doing so will aid in the ease of install and may prevent injury as parts shift around.

Figure 1: Hook ratchet to the passenger sway bar bracket on the frame.



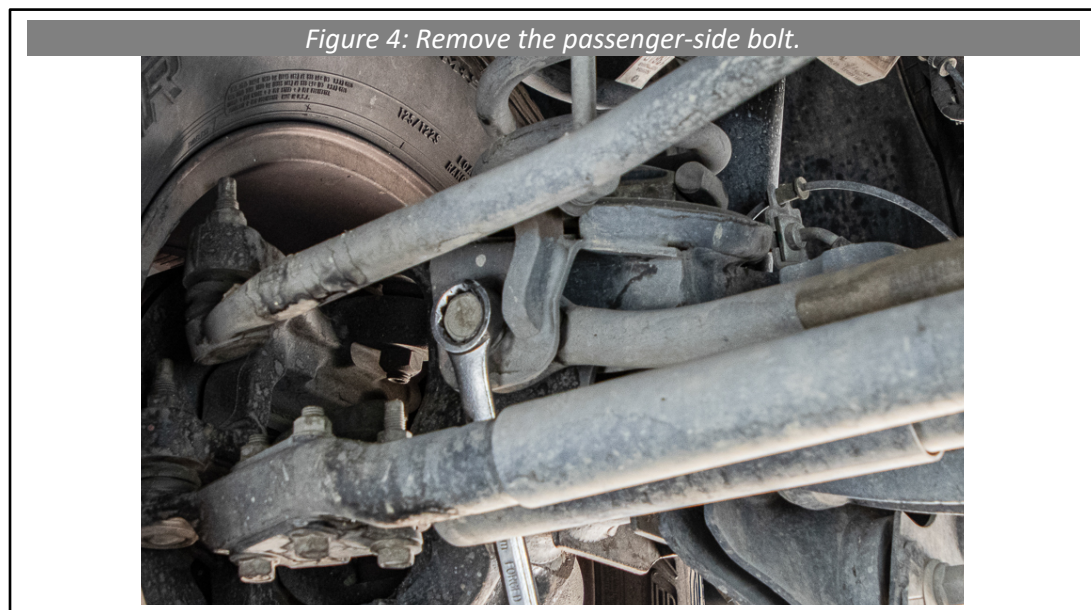
Figure 2: Hook ratchet to the driver end link bracket.



3. Break loose and remove the bolt fastening the OEM track bar to the frame using a 27mm wrench or socket. If you are using stock hardware, there is no need to hold the nut with a wrench as the wing design will hold it in place. **CAUTION:** If the front axle is not secured to the frame as outlined in the previous steps, the front axle assembly may shift once the bolt is removed.



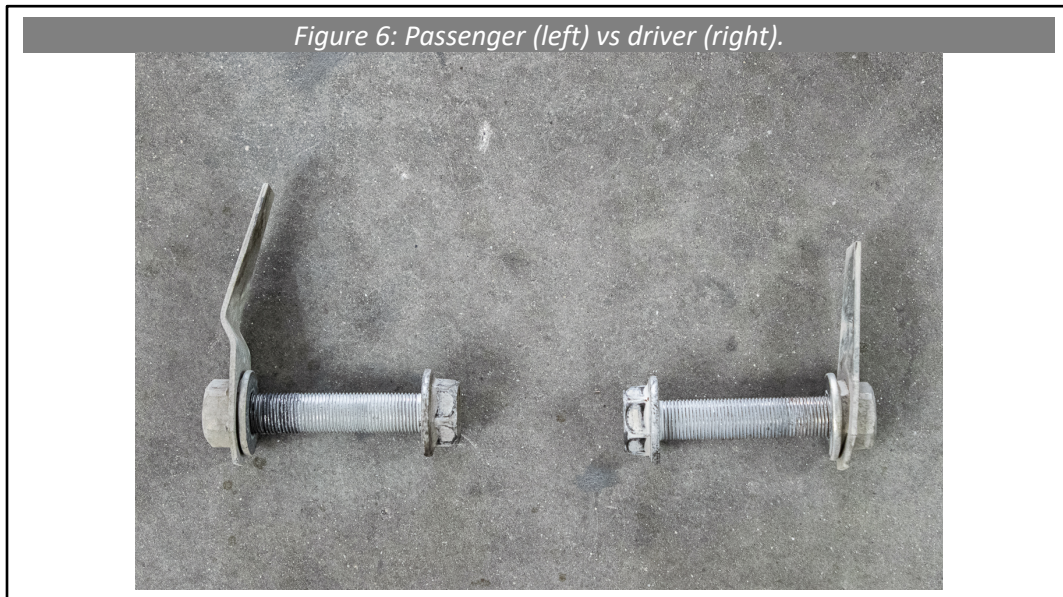
4. Break loose and remove the bolt fastening the OEM track bar to the front axle. As with the first bolt, there is no need to hold the nut in place.



5. Carefully lower and remove the OEM track bar. The Cognito track and bar and OEM track bar are pictured below in Figure 5.

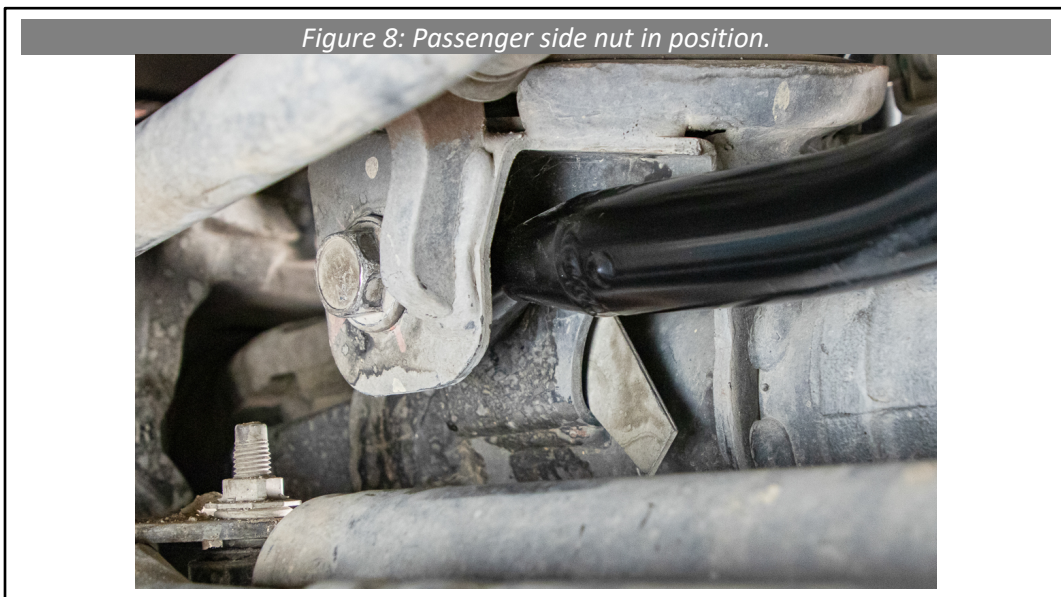
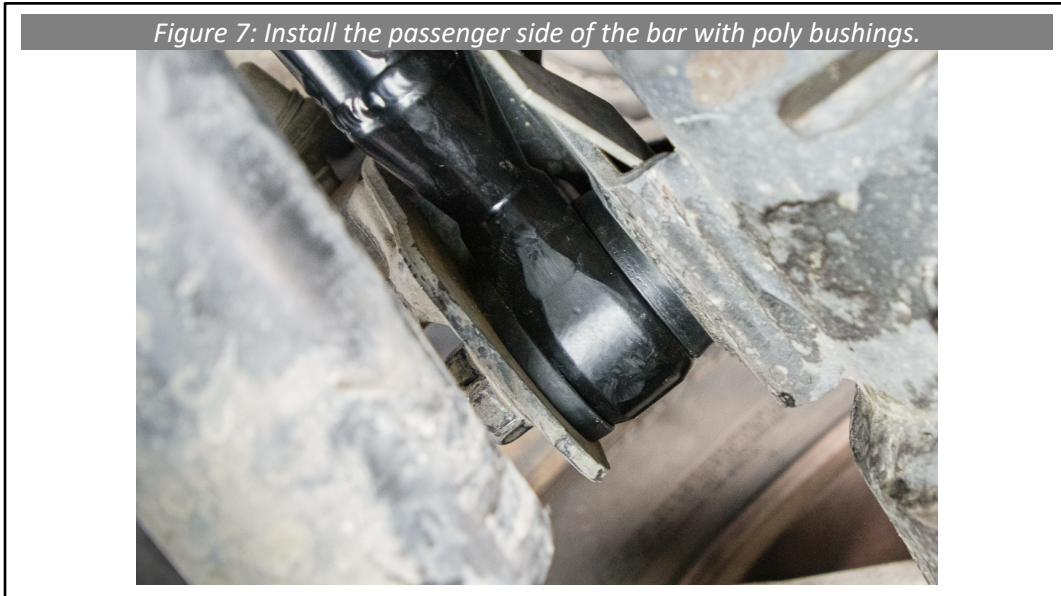


6. Note the difference between the driver and passenger side nuts with wings.

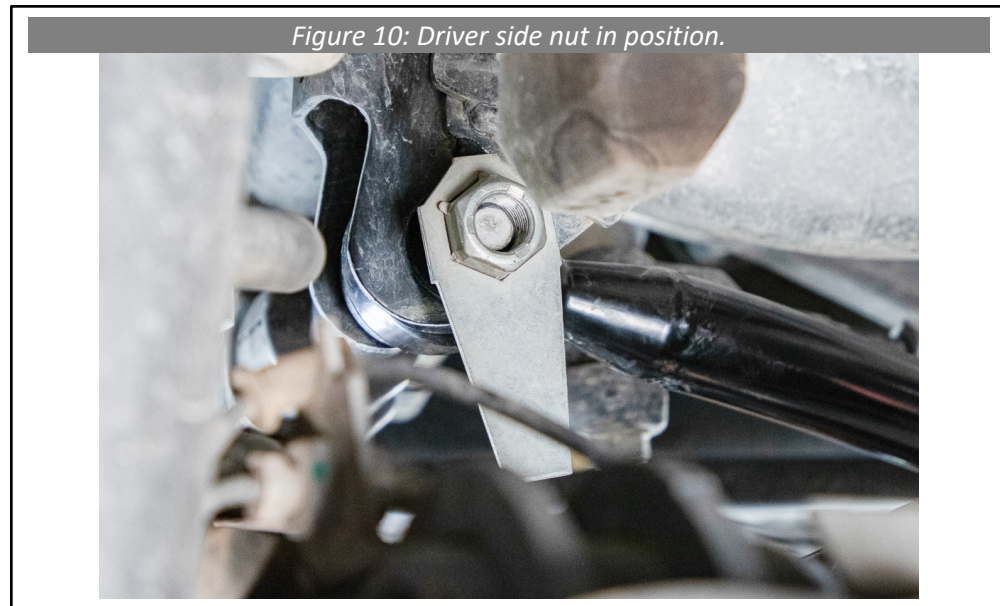
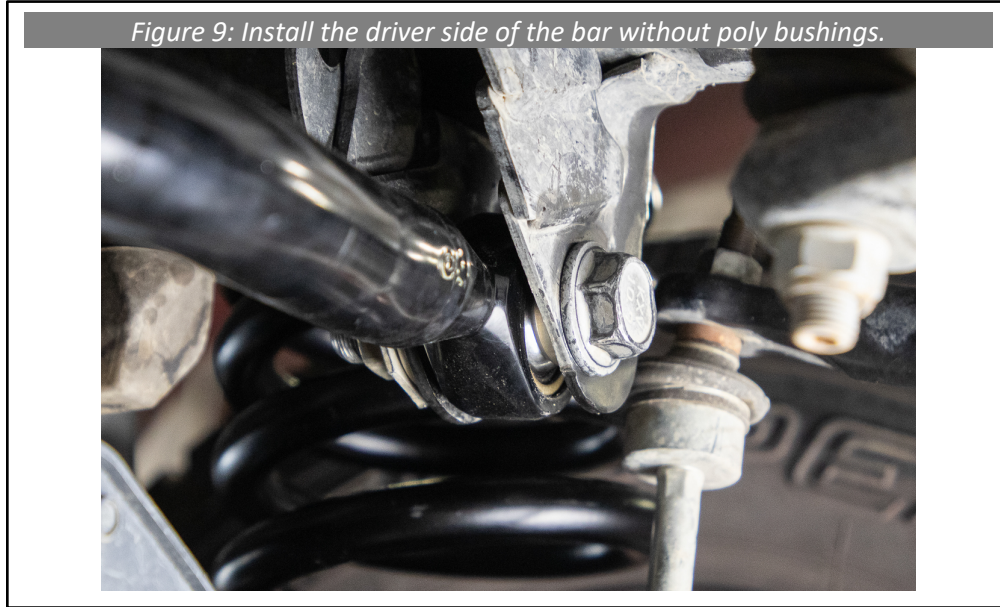


7. Remove the zipties securing the poly bushings to the Cognito track bar.

8. Install the passenger side of the Cognito track bar first, with the included bushings installed as shown. The Heim spacers may need to be pushed in to fit the bar and assembly between the bracket. Feed the OEM bolt through the bracket and rod end and into the OEM nut with wing. Ensure that the passenger side nut is being used and is positioned as shown in Figure 8. **Note:** The bolt is fed from the front of the vehicle towards the rear.

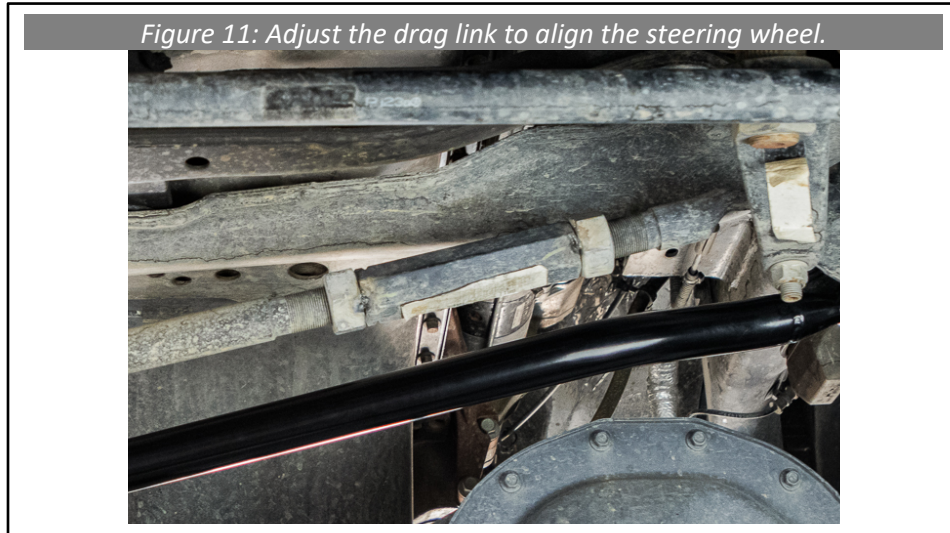


- Swing the track bar up and install the driver side end by feeding the remaining bolt through the bracket and rod end, capturing it with the remaining nut. Ensure again that the nut is positioned as shown in Figure 10, and that the bolt is fed from the front of the vehicle towards the rear. **Note:** This side does not have poly bushings.

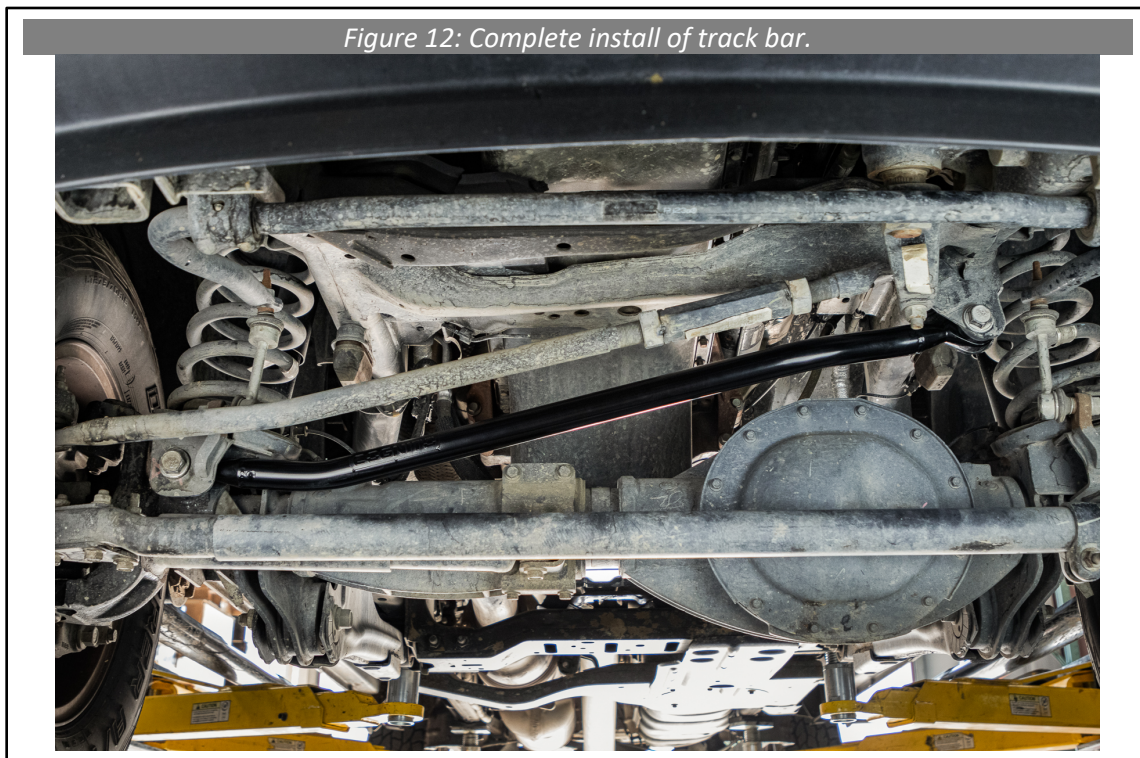


- Torque both bolts to **200 ft-lbs.**

11. The steering wheel will be misaligned at this point. To correct this, lengthen the drag link by roughly 3/8" by loosening the lock nuts and rotating the turn-buckle. Re-fasten the locknuts tightly after adjusting. Test drive and check for steering wheel alignment, and fine tune the drag link length as needed.



12. The install is complete.



WARRANTY / RETURN POLICY / SAFETY

Cognito Limited Lifetime Warranty

Cognito Motorsports, Inc. hereinafter "Cognito," warrants to the original retail purchaser, that its suspension products are free from workmanship and material defects for as long as the purchaser owns the vehicle on which the product(s) were originally installed. This warranty will be void if any modifications are made to the components, including alterations to the surface finish, i.e.; painting, powder coating, plating, and/or welding, or if they are improperly installed. Cognito truck suspension products are not designed nor intended to be installed on "competition" vehicles used in race applications, stunt or for exhibition purposes that are outside of the intended operating conditions specified by the manufacturer. Racing and competition are defined as any contests between two or more vehicles; or vehicles competing individually on off road circuits in timed events (whether or not such contests are for an award or prize).

This warranty does not include coverage for police, taxi, government or commercial vehicles, and the warranty does not cover Cognito products sold outside of the USA. Cognito's obligations under this warranty are specified and applied at its sole discretion, and warranty coverage is limited to repair or replacement of the defective product(s). Any and all costs of removal, installation or reinstallation; freight charges, incidental or consequential damages associated with the covered products are expressly excluded from this warranty.

The following items are exempt from Cognito limited warranty coverage: bushings, bump stops, tie-rod ends (Heim joints) and limiting straps. These parts are "consumables" and designed to wear as a normal part of their duty cycle, therefore they are not considered defective when worn. The aforementioned products are warrantied separately against defects in workmanship, for 60 days from the date of purchase. As a condition of warranty validation, respective Cognito suspension components must be installed as a complete system (not combined with non-Cognito hardware or ancillary parts). Any substitutions or omission of required components will void the warranty. Some minor cosmetic wear and imperfections may occur to parts during shipping, which is not covered under this warranty. This limited warranty does not apply to any components that have been subjected to collision damage, negligence, alteration, abuse, or misuse, and coverage does not extend to products manufactured by third-party companies. Cognito reserves the right to supersede, discontinue, or change the design, finish, part number and/or application of its parts when deemed necessary, without notice.

Return Policy

Product returns will not be accepted without prior written approval from an authorized Cognito representative. All products being returned must be shipped via trackable, prepaid freight. Returned products are subject to a 25% percent restocking fee. The eligible return period for products purchased directly from Cognito is 30 days from the verified date when the product(s) were originally received by the purchaser.

Product Safety Advisory

The installation of Cognito steering and suspension components will modify your vehicle's original factory equipment and geometry, which may cause it to handle differently than a stock (unaltered) vehicle. Installation of these components is not intended to strengthen nor reinforce the vehicle's frame, nor are they designed to increase rollover protection. It is necessary to periodically inspect all suspension and drive train components for proper attachment, torque specifications, operation, and for any potential unusual wear or damage. Installation of these parts will modify the height of the vehicle and may raise the center of gravity. Modifying vehicle height combined with off road operation may increase your vehicle's susceptibility to rollover conditions, which may cause serious injury or death. Many states regulate allowable vehicle height modifications, and it is your responsibility to know and comply with the legal requirements specified by the laws where you reside. Modifications to your vehicle's ride height may also affect the ride quality, driver input response, trackability and handling, and wear to your vehicle's suspension components and tires.