



FITTING INSTRUCTIONS

Part Number: FITTING KIT 3562040:
For fitting Bull bars - 3462020 or 3462040

Product Description: ARB COMBINATION WINCH, NON-WINCH BULL BAR

Suited to vehicle/s: CHEVROLET SILVERADO & GMC SIERRA 03 TO 07 CLASSIC 1500 MODELS.

WARNING

REGARDING VEHICLES EQUIPPED WITH SRS AIRBAG;

When installed in accordance with these instructions, the front protection bar does not affect operation of the SRS airbag.

ALSO, NOTE THE FOLLOWING:

- ◆ This product must be installed exactly as per these instructions using only the hardware supplied.
- ◆ In the event of damage to any bull bar component, contact your nearest authorised ARB stockist. Repairs or modifications to the impact absorption system must not be attempted.
- ◆ Do not use this product for any vehicle make or model, other than those specified by ARB.
- ◆ Do not remove labels from this bull bar.
- ◆ This product or its fixing must not be modified in any way.
- ◆ The installation of this product may require the use of specialized tools and/or techniques
- ◆ It is recommended that this product is only installed by trained personnel
- ◆ These instructions are correct as at the publication date. ARB Corporation Ltd. cannot be held responsible for the impact of any changes subsequently made by the vehicle manufacturer
- ◆ During installation, it is the duty of the installer to check correct operation/clearances of all components
- ◆ Work safely at all times
- ◆ Unless otherwise instructed, tighten fasteners to specified torque

ARB 4x4 ACCESSORIES

Corporate Head Office

42-44 Garden St
Kilsyth, Victoria
AUSTRALIA 3137
Australian enquiries
North & South American enquiries
Other international enquiries

Tel: +61 (3) 9761 6622

Fax: +61 (3) 9761 6807

sales@arb.com.au

sales@arb.com.au

exports@arb.com.au

www.arb.com.au

GENERAL CARE AND MAINTENANCE

By choosing an ARB Bar, you have bought a product that is one of the most sought after 4WD products in the world. Your bar is a properly engineered, reliable, quality accessory that represents excellent value. To keep your bar in original condition it is important to care and maintain it following these recommendations:



- Prior to exposure to the weather your bar should be treated to a Canuba based polish on all exposed surfaces. It is recommended that this is performed on a six monthly basis or following exposure to salt, mud, sand or other contaminants.
- As part of any Pre Trip Preparation, or on an annual basis, it is recommended that a thorough visual inspection of the bar is carried out, making sure that all bolts and other components are torqued to the correct specification. Also check that all wiring sheaths, connectors, and fittings are free of damage. Replace any components as necessary. This service can be performed by your local authorized ARB Stockist.

FITTING REQUIREMENTS

REQUIRED TOOLS FOR FITMENT OF PRODUCT:

Metric Spanner and Socket set	Allen key set
Phillips head screwdriver	Dia 5.5, 10.0 and 12.0mm drill bits
Electric drill 13mm chuck	Sikaflex 227 adhesive, black color

HAVE AVAILABLE THESE SAFETY ITEMS WHEN FITTING PRODUCT:

Protective eyewear		Hearing protection	
--------------------	---	--------------------	---

NOTE: 'WARNING' notes in the fitting procedure relate to OHS situations, where to avoid a potentially hazardous situation it is suggested that protective safety gear be worn or a safe work procedure be employed. If these notes and warnings are not heeded, injury may result.

FASTENER TORQUE SETTINGS:

SIZE	Torque Nm	Torque lbft
M6	9Nm	4lbft
M8	22Nm	16lbft
M10	44Nm	32lbft
M12	77Nm	57lbft

Note :

- This bull bar is suitable for Warn 12,000-16,500lb winches.
- Fog light provisions are in lower pan area of bull bar. IPF840FYS lights are suitable for this location.

PARTS LISTING

	PART No	QTY	DESCRIPTION
MOUNT BRACKETS TO VEHICLE	3756785L	1	BRACKET BAR MOUNT LHS
	3756785R	1	BRACKET BAR MOUNT RHS
	3199796	2	PLATE CAGE NUT
	4581049	10	M12 WASHER FLAT
	4581050	8	M12 WASHER SPRING
	6151255	6	BOLT M12 X 40
	6151244	2	BOLT M12X150
	6151189	2	NUT M12x1.75
	6151305	4	NUT M12 CAGE SUIT 4MM
	5811037	2	SLEEVE
WINCH	180302	8	CABLE TIE
TOW HOOK RELOCATION	6151365	2	EYEBOLT M24 2.5 SWL
	6151361	2	NUT M24 GR8 ZP
	3756765	2	BRACKET NUT RETAINING
	4581300	2	WASHER M24 EYEBOLT
	6151046	2	WASHER M6
	6151017	2	BOLT M6 X 16mm
	6151128	2	NUT FLANGE M6
CONTROL BOX FITMENT	4581291	2	WASHER M10 BZ
	6151321	2	NUT FLANGED
	6151364	2	SCREW CAP M10X30 ZP
	3756775	1	BRACKET STD CONTROL BOX IN PAN
	3199790	1	TRIM PLATE FOR 16500LB CONTROL
NUMBER PLATE FITMENT	6151017	4	BOLT M6 X 16mm
	6151128	4	NUT FLANGE M6
	6151046	4	WASHER M6
	3751384	1	BRACKET No. PLATE
WINCH COVER FITMENT	6151128	2	NUT FLANGE M6
	6151256	2	SCREW M6 S/STEEL BUTTON HEAD
	4581304	2	WASHER M6 S/S
	6191013	1	EXTRUSION WINCH COVER @ 1757
	6522048	1	PANEL WINCH COVER
WASHER BOTTLE PROTECTION	6131349	1	FRAME ASSY WASHR BOTTLE PROT
	6151303	2	NUT CAGED M8 SUIT 1.6-3.2
	6151022	2	BOLT M8X25
	4581044	2	WASHER FLAT M8
	4581046	2	WASHER SPR M8
	6151232	2	BOLT M10X30
	4581040	2	WASHER FLAT M10
	4581048	2	WASHER SPR M10

PARTS LISTING cont.			
BAR TO MOUNT ASSEMBLY	6151255	6	BOLT M12 X 40mm
	4581050	6	WASHER SPRING M12
	4581049	12	WASHER FLAT M12
	4581048	2	WASHER SPRING M10
	6151321	2	NUT M10 FLANGED
	6151232	2	BOLT M10 X 30mm
	4581040	2	WASHER FLAT 3/8"
	6151189	6	NUT M12x1.75
INDICATOR ASSY	6821151R	1	INDICATOR ASSY RHS
	6821151L	1	INDICATOR ASSY LHS
	6151308	4	SCREW SELF TAPPING
	6821116	4	NUT NYLON PLUG
	6821152	2	LOOM
	180701	6	SCOTCH LOCKS
	180302	4	CABLE TIE
INNER GUARD RETAINER	3199787R	1	PLATE INNER GUARD
	3199787L	1	PLATE INNER GUARD
	6151128	4	NUT FLANGE M6
	6151213	4	SCREW M6X20 BZ
	4581082	4	WASHER M6X20 BZ

**NOTE: Silverado fitting photos shown,
GMC Sierra is the same fitup detail.**

**NOTE: Shipping brackets connecting bull
bar to pallet and associated fasteners are
not intended to be reused in fitted bar
assembly.**

FITTING MOUNTING BRACKETS



1. Remove plastic shroud above radiator as shown, by releasing plastic clips



2. To remove the grille, carefully push the retainer spring clips back out in four places behind grille. Pull outer bar from between headlights forward to release from clip into end of guard.

NOTE: It may be necessary to remove top headlights to gain access to these clips if you cannot release them easily.



3. If fog lamps are fitted to bumper, undo electrical connections.
4. Remove bumper by undoing four bolts from above and behind bumper then two bolts securing bumper to wing support braces from under and behind forward of wheel arch area.

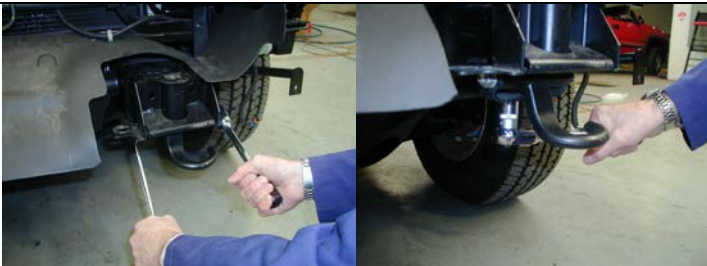
FITTING MOUNTING BRACKETS



5. Remove stabilizer arms both sides



6. Remove plastic shrouds around chassis



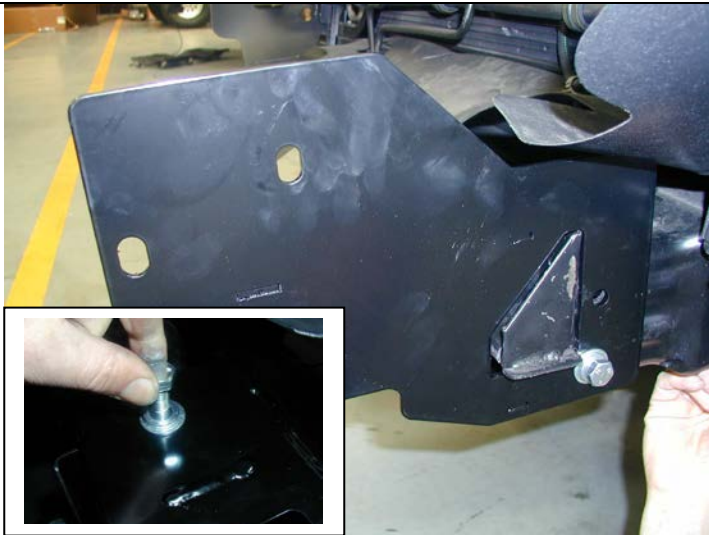
7. Remove tow hooks



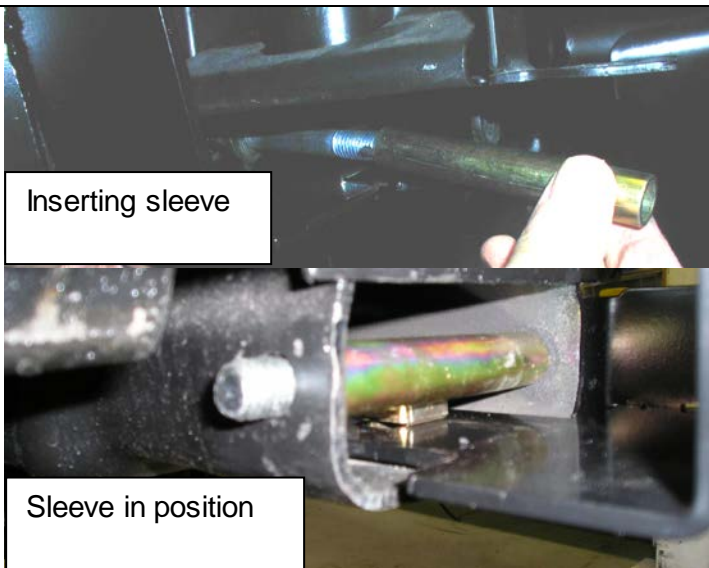
FITTING MOUNTING BRACKETS



8. Fit cage nuts to bracket tangs as shown

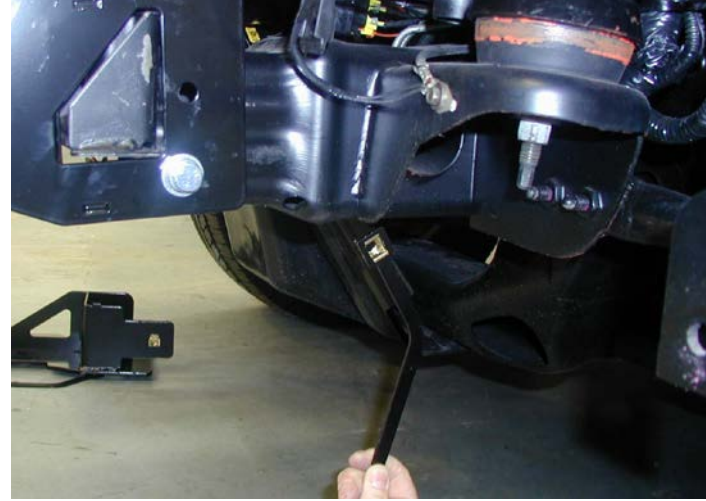


9. Position the mount brackets as shown on the ends of the chassis rails (LHS shown). Loosely fit an M12 bolt and washer set to top bolt position and lower position as shown finger tight only.

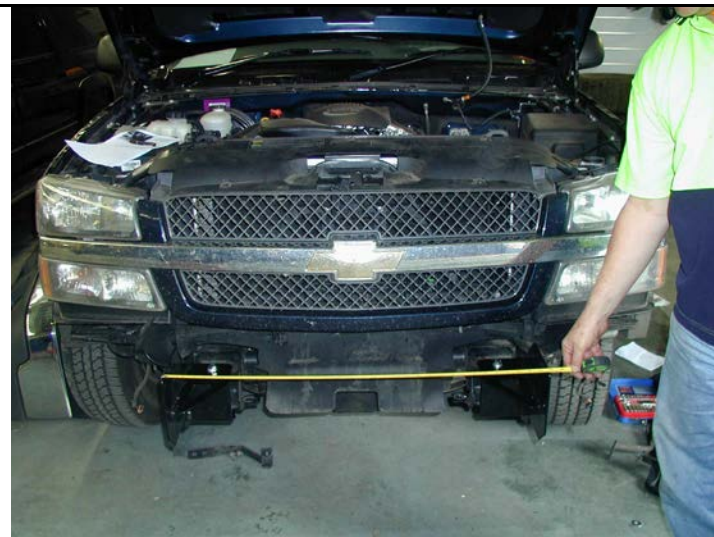


10. Partly withdraw M12 x 150 bolt and fit crush sleeve over bolt body inside chassis as shown. Fit flat and spring washers, and nut. Do not tighten.

FITTING MOUNTING BRACKETS



11. Fit M12 cage nuts to both bent plates, 1 x LH and 1 x RH as assemblies are opposite for each side of vehicle. Insert nut assembly through large hole in underside of chassis and up to meet vacant hole above long bolt. Insert M12 bolt and washer set, do up finger tight.



12. Check that brackets are parallel to each other, if not adjust. When parallel then tighten all bolts (nominal outside dimension across brackets is 898mm).
13. Fit grille and shroud back into position.

PREPARING BULL BAR FOR FITTING



14. Remove lights from cartons and then remove screws and speed nuts from each light. These fasteners are not to be reused – new screws are supplied in the fitting kit.

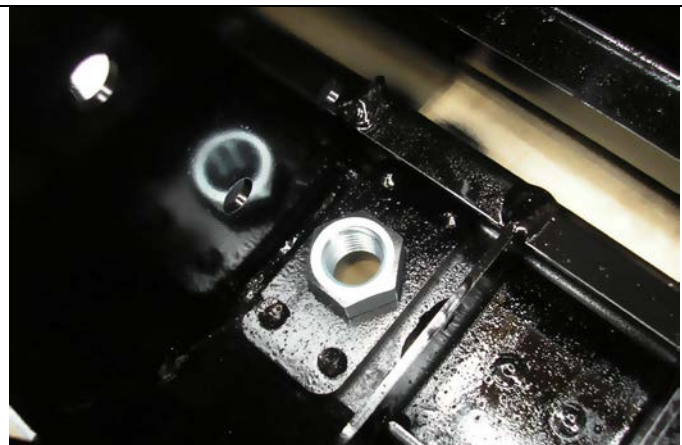


15. Insert nylon nuts into square holes in light brackets inside wing area



16. Fit lights using screws supplied in fitting kit, taking note of RH and LH light bodies, they are different and must be placed on the correct side of bull bar.

HINT: It may be an advantage at this stage to rough in the wiring for indicators (Step 46) while the bull bar is not yet fitted.



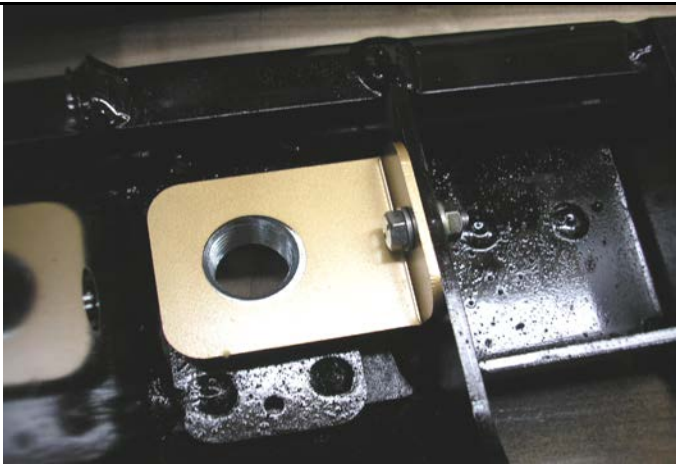
17. Fit large eyebolt nut into the plate on the inside of the bar.

PREPARING BULL BAR FOR FITTING



18. Screw in the eyebolt after first fitting the large washer. Eyebolt can be positioned to sit vertically by rotating the large nut to the correct position.

NOTE: EYEBOLTS SHOULD BE REMOVED FOR SAFETY REASONS WHEN TRAVELLING ON PUBLIC ROADS.



19. When the large nut is in its final position, secure with the nut retaining bracket using an M6 bolt, washer and flange nut.



20. Secure the number plate bracket using M6 bolts, flat washers and flange nuts. Attach the longer side to the bullbar and the shorter side to the number plate.

WINCH FITMENT



21. From the factory the winch handle should be in the position as shown.
22. Remove cable retaining band and position cable loop so it will go through roller fairlead when it is placed in bull bar.



23. Fit control box to pan:

- For 12000lb winches, use universal control box bracket supplied, attaching to rear of control box mount studs.
- Slide bracket flange under pan and align with mount slots.
- Fasten in position with 2 x M10 cap screws, black washers and flange nuts.

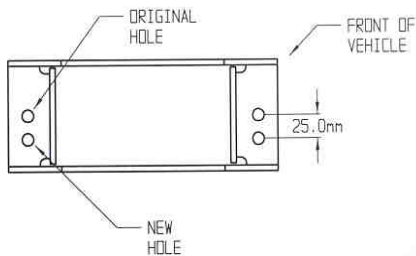


- For 15000lb winches, use Warn supplied control box bracket, attaching to rear of control box mount studs.
- Slide bracket flange under pan and align with mount slots.
- Fasten in position with 2 x M10 cap screws, black washers and flange nuts.

WINCH FITMENT



24. For 16500lb winches, apply Sikaflex (or similar product) to rear of control box trim plate from fitting kit (note orientation critical to suit final position with control box profile in pan opening).
25. Position trim plate on top of pan centrally about control box opening and line up with mount slots.
26. Fasten in position with 2 x M10 cap screws and flange nuts from fitting kit.

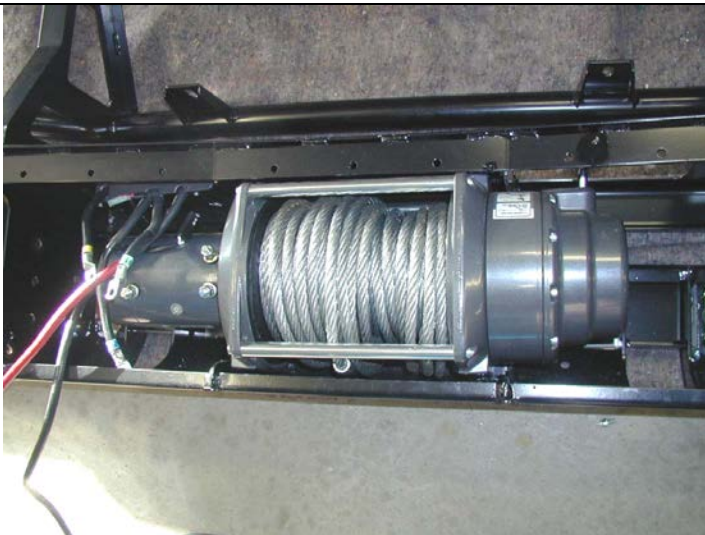


On some models, the roller fair lead must be drilled prior to fitment.

27. Mark out as shown and using a 13.0 mm drill bit, drill two holes as shown in diagram.



Warning: Drilling operations can result in flying metal debris, safety glasses should be worn.



28. Viewed from front of vehicle the winch clutch (handle) must be positioned on the LH side (same side as smaller square access hole in pan). Cable must spool from the bottom of winch. Draw off enough cable so cable crimp can be pulled through roller fairlead.

29. Bolt winch in position with the roller fair lead in place.

Hint: To increase access to mount bolts in front of roller fairlead, remove circlips from bottom of each vertical roller shaft, push shaft up so roller can be dislodged sideways. Do up bolts in fairlead and winch, then refit circlip.

30. Connect the winch control box cables to the winch motor. Refer to the Warn handbook for additional information. Connect the long winch + & - cables to the vehicle after the bar is installed.

Refer to the Warn winch manual for vehicle wiring instructions.

WINCH FITMENT



Fitting with winch, number plate above RFL



Fitting without winch, number plate covers RFL opening

Fitting number plate – with winch

32. Bolt number plate to the bracket with the M6 X 16mm bolts and M6 flange nuts through the lower holes of the number plate.

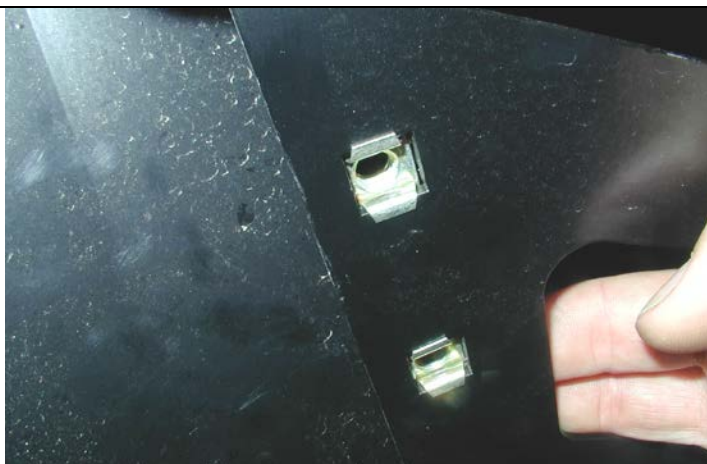
If not fitting winch.

33. Bolt the number plate through the top holes using M6 X 16mm bolts and M6 flange nuts.



If not fitting winch cont.

34. Wrap rubber extrusion around winch cover.
35. Place stainless steel washers over the winch cover fixing holes located on the top middle face of the winch bumper.
36. Place the winch cover on top of the winch bumper inline with the mount holes.
37. Bolt together using the M6 button head stainless steel screws and M6 nuts.



38. Fit the M8 cage nuts to the square holes in the wing brace on the LHS (washer bottle side) of the bull bar. The body of the cage nuts are to be on the inside of the brace. These nuts are to be used to fasten the washer bottle protection arm to the bull bar.

FITTING BULL BAR TO VEHICLE



39. Using two people, three if winch fitted, position the bar assembly on the vehicle mounts.
40. Bolt the bar to the mounts using M12 bolts, large flat washers and spring washers. Align the bar to the profile of the guards, grille and light profile and tighten all bolts.
41. Using the M10 pilot holes in mount brackets, drill pinning hole through uprights on bull bar. Fit M10 screw, washer set and flange nut and do up tight.



Warning: Drilling operations can result in flying metal debris, safety glasses should be worn.

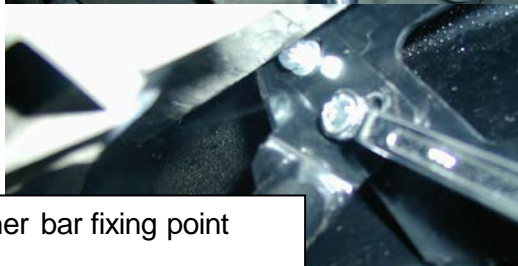


42. Trim excess plastic inner guard molding to meet lower profile of bull bar wing. Note the position of water bottle on LHS of vehicle and trim neatly around it.

Chassis fixing point



Inner bar fixing point



43. Fit washer bottle protection frame lower mount to where original bumper stabiliser arms were located using 2 x M10 x 30 bolt and washer sets. Fit off the other end to inner wing area of bull bar as shown using M8 x 25 bolts and washer sets.

NOTE: The 2 x M8 cage nuts should be in place from step 38.

FITTING BULL BAR TO VEHICLE

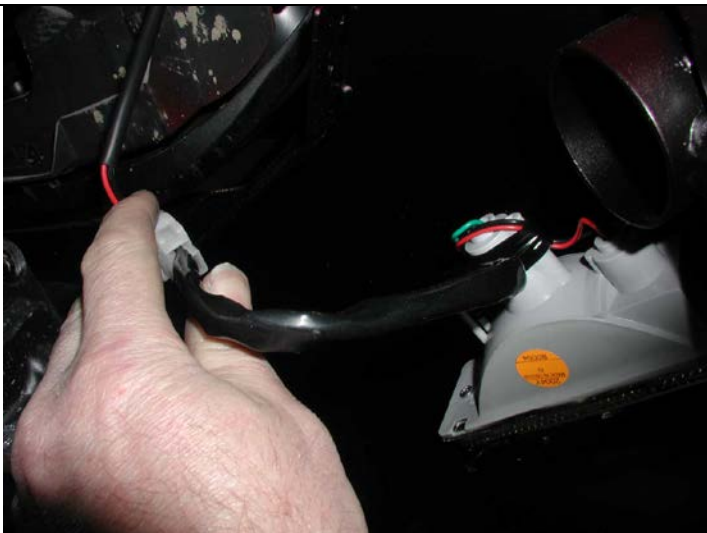


44. Fit inner guard plates to ends of bull bar wings and fasten with M6 black screws and washers.



If fitting with winch

45. With the winch cable through the roller fair lead. Mount the hook to the end of the cable.



46. Wire up the indicator and clearance lamp assemblies. Use scotch locks to splice cables to existing indicator and clearance lamp wiring and cable tie securely.
47. If fog lights are to be installed, mount positions are on lower pan area between winch opening and high lift jack position.

Refer to the Warn winch manual for vehicle wiring instructions. Ensure that electrical cables are installed well clear of sharp, hot or moving objects. Secure the winch cables to the vehicle and winch bumper with the supplied cable ties.

FINAL PRODUCT FITTED TO VEHICLE

